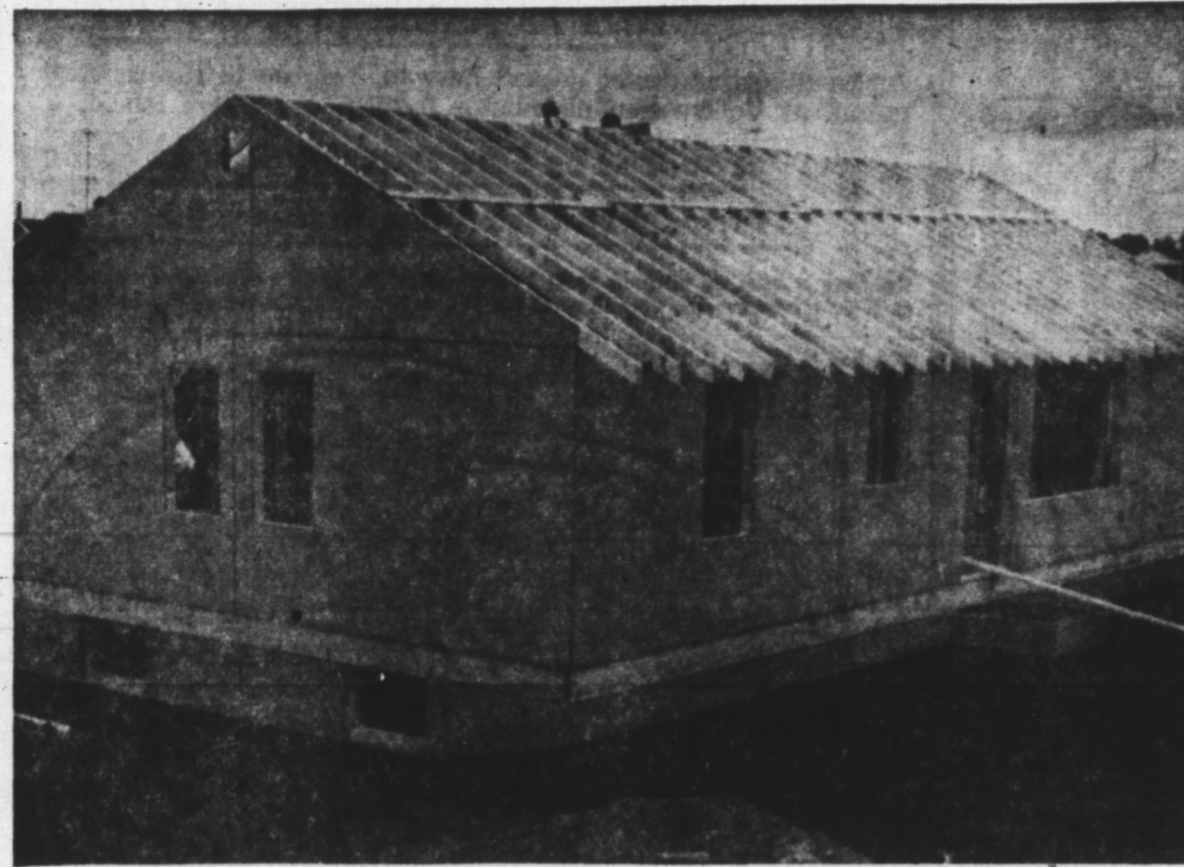


# YOUR PRECISION BUILT HOME ERECTED IN A DAY

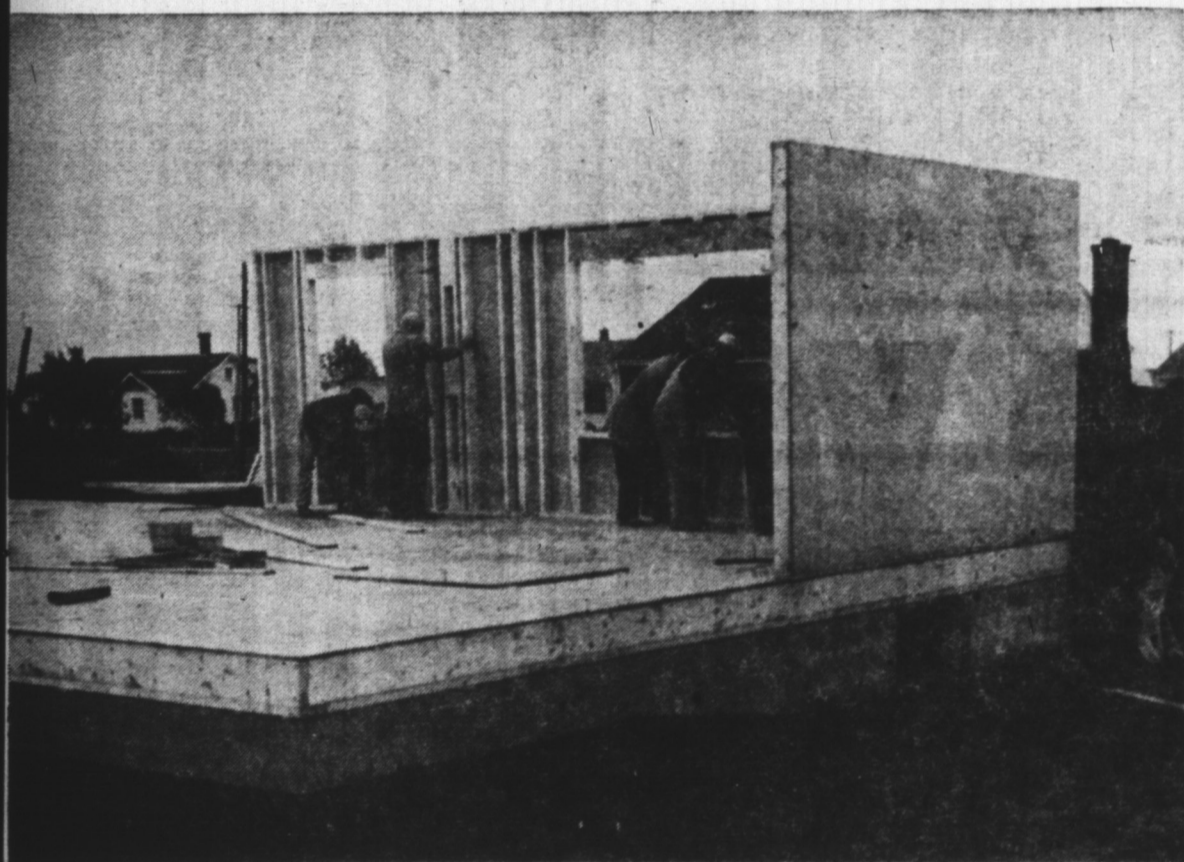
Pictured below is the step-by-step procedure illustrating how Mr. Lester Linkletter, General Contractor, erected a precision built home on Beechwood Avenue in Summerside, Prince Edward Island, Friday, October 9th.



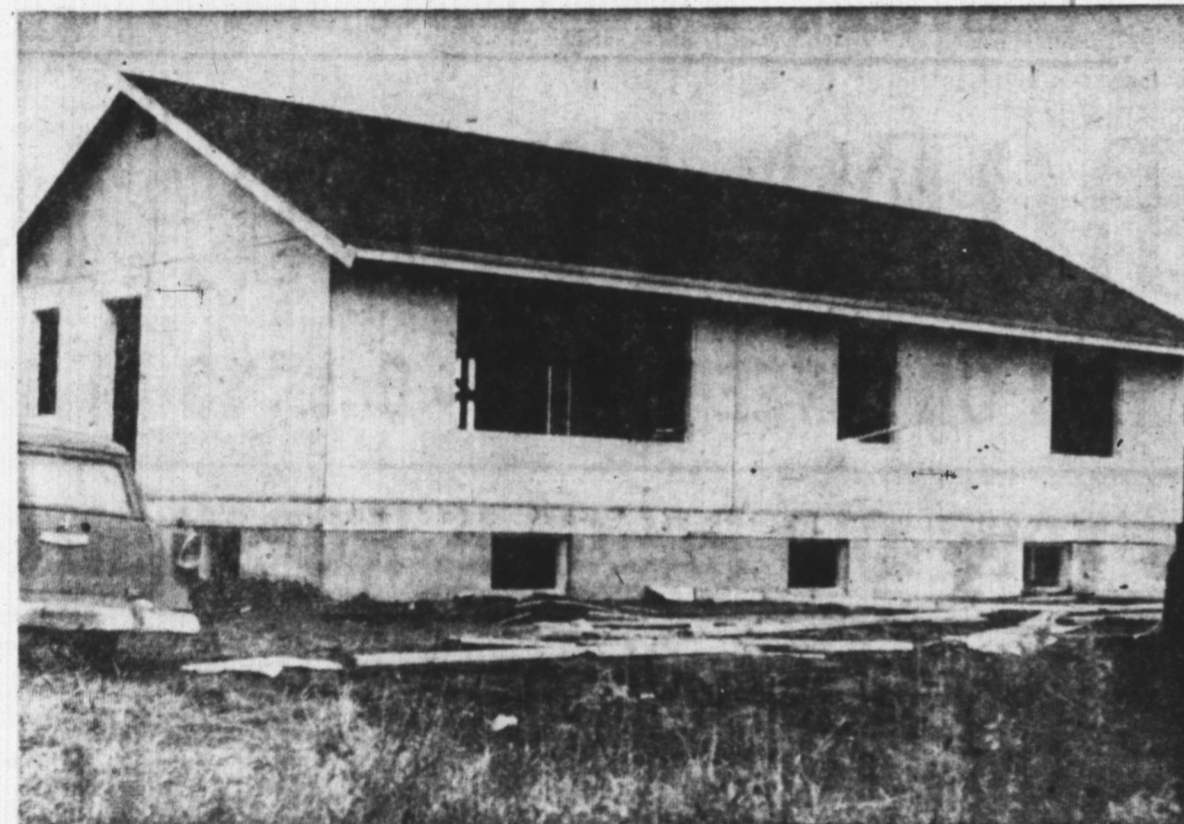
7:15 a.m. The truck arrives at the job site loaded with the component parts for the house. This photo was taken at 7:15 a.m. and shows the first section being unloaded.



NOON. This picture shows ceiling joists, roof rafters and ties, pre-cut to exact measurements notched and bevelled, completely erected. This phase of the construction was commenced at 10:00 a.m.



7:30 a.m. The floor joists and sub floor all pre-cut at our mill were previously delivered and constructed on the prepared foundation. This photo shows the completed sub floor and the first three exterior wall sections erected.



5:00 p.m. Roof sheathing of plywood was completed by 2:00 p.m. and the photo above shows first grade shingles applied to the roof together with fascia and gutter.



8:45 a.m. The pre-engineered factory built exterior walls sheathed with HOMASOTE were completely erected by 8:10 a.m. This photo taken at 8:45 a.m. shows the erection of the interior partitions which were completed by 10:00 a.m. under the guidance of our supervisor.

- A. Your PRECISION-BUILT home is now ready for exterior finishing with masonry or wood, including trim. Window units are ready to be placed in openings. Your home is now ready for the interior finish.
- B. Your heating, plumbing and electrical wiring and other necessary sub-trade work can now be started.
- C. You are now ready for the insulation, lath and plastering or drywall materials.
- D. In order that your building schedule will not be interrupted, we supply next exterior and interior door units, flooring and all necessary hardware and interior trim. The balance of materials for the interior finish is then supplied to complete your home, and includes doors, hardware, cupboards, etc.

#### YOU WILL SAVE IN MANY WAYS

The PRECISION-BUILT method, with its guaranteed price and guaranteed quality, eliminates problems and offers you savings on many items such as:

FINANCE COSTS  
LABOR COSTS AND ERRORS  
MATERIAL LOSS

WORRISOME DETAILS  
WEATHER HOLD-UPS  
RENTAL COSTS

You get a BETTER job FASTER  
FOR COMPLETE INFORMATION, CONTACT

## M. F. SCHURMAN COMPANY LIMITED

WITH BRANCHES AT SUMMERSIDE KENSINGTON CHARLOTTETOWN EXCLUSIVE PRECISION BUILT HOME DEALERS