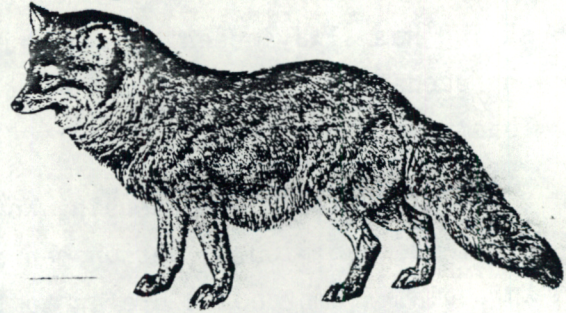


# Miscellaneous sightings

## MAMMALS

- Mink - tracks of two in soft sand about halfway out on Cavendish Sandspit Sept. 21 (Brian Dalzell - BD)
- Weasel - One ran across the road in front of my car on a beach road at Cable Head, Sept. 27 (BD)
- Coyote - darted out in front of my car on the road to Feehan's Point near Savage Harbour. It had what appeared to be a ruffed grouse in its jaws and ran down the road about 200 yards before cutting off into the woods. I would estimate its weight at about 40 pounds, no more. In coloration it was darker along the back than the sides, those being a dull dun color almost like faded marsh grass. Sept. 28 (BD)
- Grey seal - 6 seen in the surf off East Poin, Nov. 2 (BD)



## FLOWERS

- Lupin - seen in bloom by Alan Saint (AS) Oct. 11  
- one still in bloom on the roadshoulder, Covehead Bay on Nov. 2 (BD)
- Mountain avens - a couple of plants still blooming at Covehead Bay on Nov. 2 (BD)
- Dandelion - seen in Frenchfort on Oct. 25 (AS)

## New reserve

The new Ellesmere Island National Park Reserve will protect almost 40,000 square kilometers of spectacular scenery containing mountain ranges, glaciers, fiords, musk oxen and Peary caribou.

The national park reserve has been established in response to Canadian and world-wide demands from environmentalists and conservationists to protect this unique and remote Arctic wilderness. A national park reserve has the same protected status as a national park, except that the establishment of a reserve does not affect native land negotiations.

\*\*\*\*\*

MEMBERSHIPS NEEDED: As threats to birds and their habitats mount continuously, pressures increase on the International Council for Bird Preservation to do more and more research, habitat preservation/restoration and education, further straining already limited budgets. You can help by taking out a Contributing Membership at 25 British pounds. Address: ICBP, 219c Huntingdon Road, Cambridge CB3 0DL, England.



INTERNATIONAL COUNCIL  
FOR BIRD PRESERVATION

I C B P - CANADA