

**10 Acres Of Grain  
Is Minimum For  
Crop Insurance**

Crop insurance on grain has been limited to growers who plant more than 10 acres, Agriculture Minister Andrew MacRae said yesterday.

Pointing out that the cost of insuring grain works out to 30 cents per acre for a grower, Mr. MacRae said it would hardly be worthwhile to insure less than 10 acres.

The insurance scheme will provide payment for \$20 per acre for growers who suffer crop losses.

Potato crop insurance costs \$5.06 per acre and pays \$158.05 per acre for total crop loss.

**Prince St. H & S  
Meets Tonight**

A review of season's activities and election of officers will feature the annual meeting of the Prince Street Home and School association tonight.

Following routine business a program of entertainment will be held under direction of William Weale, chairman.

Class visitation will follow the meeting and a luncheon will be served under the supervision of Mrs. Roy Strang.

A good turnout is looked for at this final meeting of the season.

**Research Plan  
Is Postponed**

OTTAWA (CP)—The National Museum has postponed a research project into the Beothic Indians, a tribe restricted to Newfoundland that became extinct in the last century, because of pressure of business.

Dr. W. E. Taylor, a museum anthropologist, said Wednesday he had hoped to undertake the project this spring but has been forced to put it off until next spring.

He said the human history branch of the museum is currently understaffed and planning a summer expedition to the Arctic to study Eskimo history.

Mystery surrounds the Beothic tribe and its origins.

**EASTERN  
BRIEFS**

**FLIES HOME**  
Mrs. Thomas Sullivan, Rosebush, arrived home by plane yesterday after having spent the winter months with her two sons and daughter-in-law, Leo Sullivan, and Mr. and Mrs. James Sullivan, Montreal.

**OSBORNE FUNERAL**—The funeral for Charles Hampton Osborne was held Wednesday, May 15, from the Murray River Funeral Home to the Murray Harbor Church of Christ, where service was conducted by David E. Weale. Hymns sung were, "My Soul in Exile," and "We Now, But in the Coming Years." Pallbearers were Brent Harris, Franklin Keenan, Lyle Gordon, Murray Gosbee, Harold MacKenzie and Milton MacKay. Interment took place in the Murray Harbor cemetery.

**Opening  
Dance**  
SATURDAY, MAY 18  
Sea View Inn Rollo Bay (Souris)

Music By the Rembrants  
9-12 P.M. Admission .75  
Rock'N' Roll, Twist etc.

**Moosehead  
Breweries Ltd.**

L. M. Robinson, C. A.

Mr. L. M. Robinson has been elected a Director of Moosehead Breweries Ltd., Lunenburg, N. B., & has been announced by Mr. George B. Oland, Chairman of the Board.

Before joining Moosehead Breweries as Secretary-Treasurer in 1951, Mr. Robinson was associated with McDonald, Currie & Company, chartered accountants, in Saint John, and in Charlottetown, where he was Resident Manager from 1954 to 1959.

Mr. Robinson is a member of the Council of the New Brunswick Institute of Chartered Accountants.



**PLAN A  
HOLIDAY  
PICNIC**

EFFECTIVE

MAY  
16  
17  
18



MAPLE LEAF

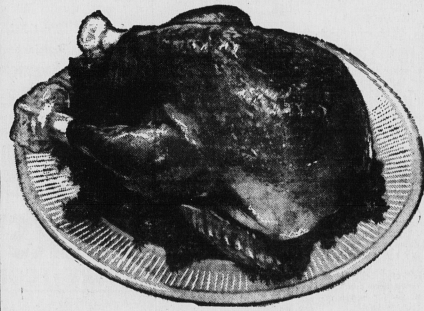
**WIENERS**

**"FREE"**

6 OZ. JAR BARBOUR'S

**MUSTARD**  
FREE WITH EVERY ---

POUND  
OF



GRADE "A" OVEN READY

**TURKEYS LB. 49<sup>c</sup>**

Maple Leaf  
**Cooked  
MEATS**

Real Lean  
**Ground  
BEEF**

Maple Leaf  
**Cooked  
HAM**

PICKLE & PIMENTO  
MAC. & CHEESE  
CHICKEN LOAF

6 OZ. PKG. **25<sup>c</sup>**

**49<sup>c</sup>**

6 OZ. PKG. **49<sup>c</sup>**

15 OZ. TUB **39<sup>c</sup>**

PERFECTION TWINPACK

**Ice Cream 2 PINT BRICKS 49<sup>c</sup>**

KOLD PAK  
**STRAWBERRIES**

CLOVER FARM INSTANT

**COFFEE 6 OZ. JAR 79<sup>c</sup>**

FLUFFO  
**SHORTENING**

SCHNEIDER'S

**PICNIC HAM 1 1/2 LB. 1.49**

MONARCH-POUCH PAK  
**CAKE MIXES 3 FOR 49<sup>c</sup>**

DRINK UP

**ORANGE DRINK 64 OZ. JAR 59<sup>c</sup>**

HEINZ-12 OZ.  
**RELISHES**

LOWNEY'S WHITE

**Marshmallows 1 LB. BAG 35<sup>c</sup>**

HOT DOG  
SWEET  
PICALLILI  
HAMBURG

**25<sup>c</sup>**

PUREX-WHITE AND COLORED

**TOILET TISSUE 8 ROLLS 1.00**

HEINZ-48 OZ.

**TOMATO JUICE 3 TINS 1.00**

CLOVER FARM 20 OZ.

**PORK & BEANS 2 TINS 35<sup>c</sup>**

HEINZ TOMATO

**KETCHUP 11 OZ. BOTTLE 25<sup>c</sup>**

HEINZ COUNTRY GOOD

**SOUPS PKG. 10<sup>c</sup>**

HEINZ PICKLES

**Bread 'N Butter 16 OZ. JAR 25<sup>c</sup>**

HEINZ SWEET MIXED

**PICKLES 16 OZ. JAR 29<sup>c</sup>**

CLOVER FARM SALAD

**DRESSING 16 OZ. JAR 33<sup>c</sup>**

CRUNCHIE GREEN

**CELERY 19<sup>c</sup>**

LARGE  
STALKS

VINE RIPENED

**TOMATOES LB. 25<sup>c</sup>**

Snappy Red

**RADISHES 10<sup>c</sup>**

Dew Fresh

**RHUBARB 15<sup>c</sup>**

New Texas

**CARROTS 24<sup>c</sup>**

BAG

1 B.

2 Lb. Cello

**PRODUCE SPECIALS**

**WEEKEND SPECIALS**

SCOTT WHITE OR COLORED  
**SERVIETTES 2 60's FOR 35<sup>c</sup>**

PLASTIC-20 PIECE  
**PICNIC SETS 69<sup>c</sup>**

HEINZ SANDWICH  
**SPREAD 16 OZ. JAR 49<sup>c</sup>**

HOT OR COLD  
**Drinking CUPS 2 PKGS. 25<sup>c</sup>**

WHITE OR COLORED  
**PAPER PLATES PKG. 19<sup>c</sup>**

BARBOUR'S BONNIE  
**Salted Peanuts 1/2 LB. BAG 29<sup>c</sup>**

KRAFT  
**Velveta Cheese 1/2 LB. PKG. 35<sup>c</sup>**

HOLLAND  
**ENGLISH Toffee 7 OZ. PKG. 29<sup>c</sup>**

CLOVER FARM  
**WAXED PAPER 100 FT. ROLL 29<sup>c</sup>**