

Lighting hints improve home

Why says the "good old days" were all that good? When it came to lighting your home, they definitely weren't!

Remember the bare bulbs in the centre of the ceiling, the extension cords running down the walls?

With vastly improved light bulbs, better fixtures and a constant supply of electricity, those days have vanished in all but a few Canadian homes.

You're paying for the bulbs, the fixtures, the electricity, but do you know how to make the best use of them?

It costs the average household little or nothing to make the best use of the light he has.

Proper lighting design— for example the way a ceiling fix-

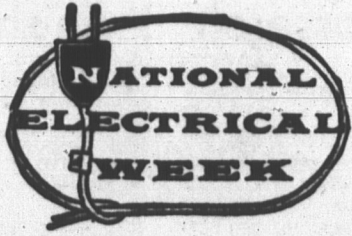
ture controls and distributes the light—determines its value. If exposed bulbs glare in your eyes you are not getting the best value from your lighting dollar.

Special bulbs, such as the Shadow Ban, have been designed to eliminate this nuisance.

Bulbs should never show above, below or through a shield. Use a diffuser and several Shadow Ban bulbs in multiple sockets to spread soft, even light through the room.

Well designed table lamps can be decorative as well as functional. Be sure to project your eyes from too little light, or from glaring bulbs, by selecting the proper light bulb in the proper lamp. The average man's eyes, when he is reading, are

SWITCH



To "RED SEAL" wiring system and ensure yourself of safe Electrical Equipment.

For safety's sake have a real good wiring job done by a reliable electrical contractor. No job too big or too small.

Member Electric Service League of P.E.I.

NEWSON ELECTRIC

161 Queen St. Phn 4-8325

CONVENIENCE
ECONOMY
COMFORT
SAFETY

—With—

RED SEAL STANDARD



OF WIRING

—and—

Electrical Installations

—BY—

PALMER ELECTRIC

"Electric Heating A Specialty"

96 Fitzroy St. Dial 4-8543

Whether in cornice, valance or wall-bracket form, wall lights provide diffused, even light that is ideal for entertaining, just relaxing, or for television viewing.

A television screen, unlike a movie screen, is not intended for viewing in a darkened room. The strong contrast between the bright screen and dark surroundings is extremely tiring to the eyes. A moderate light level, with four or five tri-lite table and floor lamps, provides the proper medium of light.

But, if at all possible, position the lamps so that they are not reflected by the TV screen. If this is impossible, opaque or dense translucent bowls will help.

Kitchens should be light and bright. When you blend lighting ingredients with the design of the work areas, you will have a cheerful kitchen that saves time and energy and is easy on the disposition. Kitchen light bulbs should be used for this purpose.

A ceiling fixture with a Warm White Deluxe fluorescent lamp provides good lighting, while separate fixtures over work areas allow you to see into drawers and read labels on shelves easily.

There is no reason why a laundry area should be dark just because it is seldom used. You need an overhead fluorescent fixture, especially if you're using a wringer. You're much safer when you can see what you are doing. CGE lighting experts recommend a fluorescent Cool White Deluxe lamp for this purpose as it provides a bright, brisk work atmosphere.

Robin Hood Co. Controls Bick's

TORONTO (CP)—Robin Hood Flour Mills Ltd. has acquired a controlling interest in Bick's of Canada Ltd., a joint announcement said.

John Tatam, Robin Hood president, and president Walter Bick of the pickle company said the companies signed an agreement giving Robin Hood the 71-per-cent interest held by the Bick family.

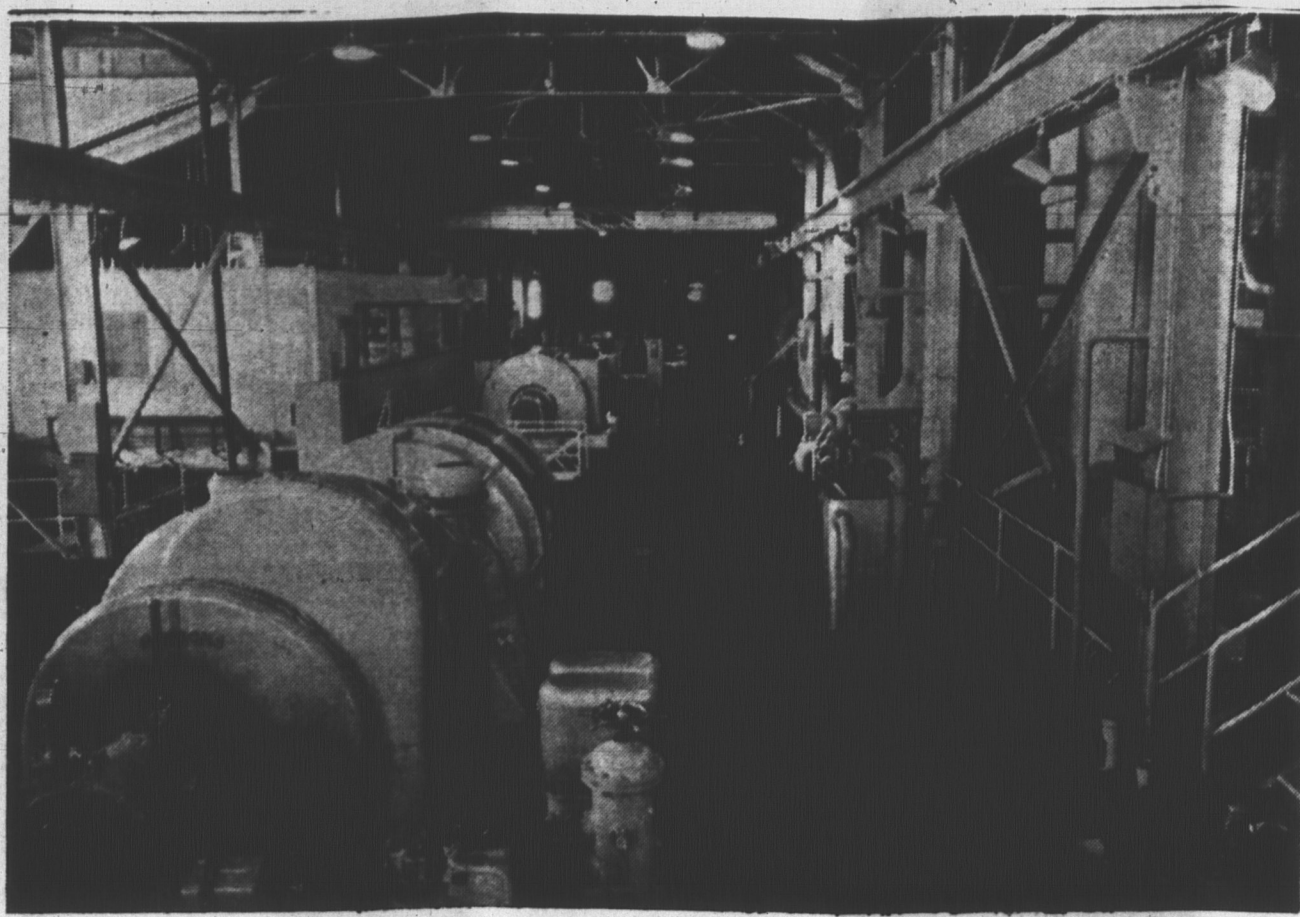
Robin Hood, a 56-year-old company that sells flour in 70 countries, will make a public offer through Crown Trust Co. for the remaining Bick shares at \$16.50 each.

Mr. Bick will continue as president and become a director and vice-president of Robin Hood.

N.W.T. Proposed As New Province

OTTAWA (CP)—The Northwest Territories Council has given approval in principle to a brief which would turn the territories into Canada's biggest province within 10 years.

The nine-member council started debate on the brief it is to present to the advisory commission on the development of government in the territories



TURBO-GENERATOR ROOM AT CH-TOWN PLANT

Outdoor lighting add to garden enjoyment

You're sitting in the back yard, slouched semi-comatose in a soft chair and sipping a tall one.

Then the sun goes down. Well don't give up. There's lots you can do on that same patio or back yard with special lighting.

It's simple, it's cheap and it certainly extends the number of hours you can spend outdoors.

In the summer, cooking and dining outdoors are two things all the family enjoys. It brings a picnic atmosphere to an otherwise average evening at home—especially after all those long winter nights cooped up in front of a television set.

Two floodlights will do the trick, according to Canadian General Electric engineers. Place them 12 to 20 feet above ground in trees, on poles or on the side of the house. One can be aimed at the barbecue area so the master chef can see what's cooking. The other should be aimed over a picnic table where the hungry family awaits.

For more effect, you can use diffusing plastic "bubble" fixtures that house 60 or 75-watt bulbs. They provide a soft-but-sufficient glow of light over the dining area.

Some outdoor cooks have even tried hanging plastic or muslin screens, four or five feet square, above the table. When lit by 150-watt floodlights, they produce a soft, interesting effect. When the screen is colored, the light shining through will cast a soft hue on the surrounding area.

But what about those uninvited guests that always drop in on an outdoor meal—the bugs?

You can take care of them by substituting yellow bulbs for your regular ones. Bugs are attracted by the "blue" part of the light. Yellow bulbs are practically invisible to the human eye.

When entertaining outdoors at night, make sure all steps and walks are adequately lit. It only takes a few low power bulbs in reflectors to do the job. Or you can have recessed lighting units built into the house that shine on the walk at night.

Gardens can be lit to enhance their beauty by night, so can trees—all through the use of properly placed spot and floodlights.

For each lounging chair on

the terrace there should be a lamp. Whether it's strong enough to relax by or read by depends on the individual.

If you're lucky enough to have a backyard swimming pool or tennis court, these can also be lit for more hours of fun for the family. Buildings and trees are good locations for floodlights. Or you can use telescopic poles, purchased or home-made, that fit into pipe sleeves driven into the ground.

Careful aiming of the lighting units and high mounting, at least 16 to 20 feet above the ground,

Adequate lighting makes safer homes

You can trip the light fantastic on a staircase—but you don't have to.

With modern light bulbs to show you the way, attics and cellars are no longer the dark, dank places you visit once in a while.

Once upon a time—it said in ancient fairy tale books—you could wander down into that musty cellar not knowing what you'd find.

You might trip over a mislaid plank. You might even miss that last step with surprising results.

These areas—along with your front porch, back yard garage and driveway—can be dangerous at night.

A stranger, wandering at course, might trip over a garden tool that was left sitting in

Allis-Chalmers President Named

MONTREAL (CP)—Raymond G. Nordstrom, a native of Pittsburgh, Pa., has been elected president and general manager of Canadian Allis-Chalmers Limited. It was announced here.

Mr. Nordstrom succeeds J. Donald Greenwood, who announced his retirement after being with the firm for about 44 years.

DIDN'T BRING PARENTS

SAN BERNARDINO, Calif. (AP)—Traffic violator Charles H. Bryer was summoned to appear in San Bernardino County juvenile court and bring his parents. He appeared without parents. He announced he's 18 and had already paid his \$12 fine. The court allowed there had been some mistake.

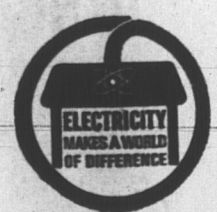
Lighting on stairways, the landings, in a child's bedroom or inside closets is also important. These are areas where a person could easily trip and fall.

Even inside the kitchen oven there should be all right. It helps prevent accidental burns to women reaching for containers they can hardly see.

Yet these are among the most commonly neglected areas where lighting should play an important part in the safety of the household.

Safety experts and lighting engineers from Canadian General Electric blame poor lighting for a large number of accidents in the home. Statistics reveal that more accidents happen in the home—many through improper lighting—than occur on the street.

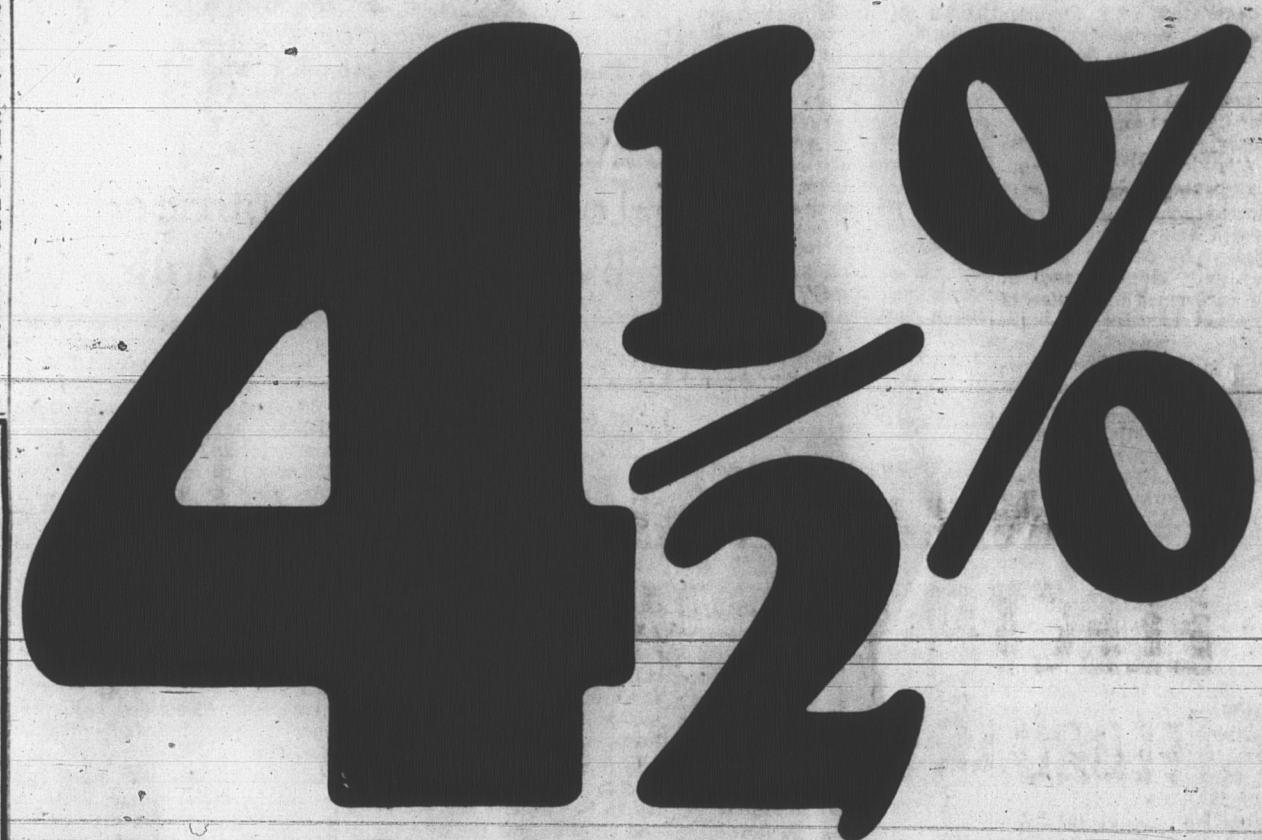
COMPLETE ELECTRICAL SERVICE



STOREY ELECTRIC LTD. . . . heartily endorse RED SEAL Standard of wiring.

Member Electric Service League of P.E.I.

STOREY ELECTRIC LTD. Charlottetown Phone 4-7341 - 2-1411



on Savings Accumulation Accounts

ROYAL TRUST RAISES INTEREST from 4% to 4 1/2%

Effective as from February 1st, interest on Savings Accumulation accounts will be raised by 1/2 of 1% to 4 1/2% per annum, calculated on the minimum monthly balance and payable April 30th and October 31st. Act now! All deposits made up to and including February 15th will earn the new rate of interest

as from February 1st. No chequing is allowed, but withdrawals may be made in person at any time. New rate applies on accounts up to \$50,000. Interest on regular Savings Accounts remains at 4% per annum, calculated on the minimum half-yearly balance and payable April 30th and October 31st. Chequing privileges are provided.

Now more than ever, talk to **ROYAL TRUST** it's in your best interest!

Dominion Building, Charlottetown, P.E.I. • Tel. 862-2434

The Rogers Hardware Co. Ltd.

We Strongly Recommend the "RED SEAL" Standard of Wiring in All New Homes and Old Homes in Prince Edward Island

P.E.I.'s Largest Stocking Electric Distributors

Member Electric Service League of P.E.I.

The Rogers Hardware Co. Ltd. "If It's Hardware We Have It"

Queen Street Charlottetown

WORLD IN ONE GARDEN There are about 7,000 varieties of trees and shrubs in the 415 acres of Washington's national arboretum.

We Heartily ENDORSE The Red Seal Standard of Wiring

FOR ALL YOUR • Wiring • Fixtures • Appliances CALL . . . CHAS. M. STEWART

Member of Electrical Service League of P.E.I. Charlottetown Dial 2-2191