

# Recruits For Navy Said Few

By DAVE MCINTOSH  
OTTAWA (CP)—The bottom has nearly fallen out of navy recruiting defence department officials disclosed Wednesday. They attributed the big drop in enlistments to several factors, prominent among them being cancellation of the super-age program, mothballing of older warships and the attack on the navy last summer by retired Commodore James P. ...

The navy was able to sign on only 51 recruits in December, far below the monthly number required to replace sailors who leave the service or retire. The number of enlistments in October was 327 and the number in November 206. The comparable figures for 1963 were 371 in October, 266 in November and 213 in December. Recruiting in the army and RCAF is also lagging but not to the same extent. The army signed on 201 men in December and the air force 190. TARGET CUT When Associate Defence Minister Gardiner announced Jan. 8 that 14 warships would be taken out of service, the navy cut its manpower ceiling to 20,700 from 22,728. It said at that time that recruiting would temporarily be slowed to 130 sailors a month compared with the normal 250 to 300 men. But at the present rate, officials said, the navy will be down to its new manpower ceiling long before June as planned. This doesn't bother the navy much. But what does bother it is the fear that recruiting won't pick up again after the navy has pared down to 20,700. If it doesn't, there will be more work for each man in the service or recruiting standards will have to be lowered. Naval strength at Dec. 31 was 41,832. The army stood at 49,253 men and the air force at 51,850. The 51 recruited in December by the navy is the lowest monthly figure for any service—with one exception—since the defence buildup began in the 1953 Korean War. The exception is the 49 men signed on by the navy in December, 1962, after the government decided on a drastic reduction in army strength — to 50,000 from a planned 59,000 — as an austerity measure.

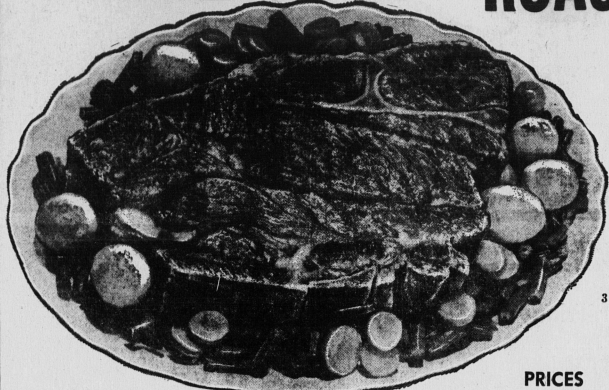
# Canada's Toys Well Received At U.K. Show

LONDON (CP) — Canada's first toy exhibition in Britain is having remarkable success. The 19 manufacturers represented report a "fabulous" total of \$200,000 in confirmed orders for the first two days of the fair. Buyers from Israel, The Netherlands, France and the Channel Islands are among those showing interest in the Canadian products. One Toronto company is winning orders with a Beatie doll, a composite figure representing the phenomenally successful Liverpool singing quarter now in the United States. Another Toronto firm is doing well with a giant-sized Beatie comb. The exhibition, staged jointly by the Canadian government and Canadian Playthings Manufacturers Incorporated, a Toronto-based association, is being held at Sir John A. Macdonald House in Grosvenor Square. The show opened Monday and closes Friday. The companies represented are mostly from Toronto and Montreal, with some from Burlington, Prescott and Preston, Ont.

# Dependents To Be Moved From U.S. Base

WASHINGTON (AP) — The U.S. defence department announced Wednesday that no more families of military people or of civilian employees will be sent to the U.S. naval base at Guantanamo, Cuba, and that dependents now there will be removed over the next two years. Assistant Defence Secretary Arthur Sylvester announced this action "as a further step in the process of making the Guantanamo naval base entirely self-sufficient and to improve the garrison posture of the forces here. There are about 3,000 dependents now on the base, which has been subjected to new Cuban pressure in the form of a cut-off of fresh water normally coming from a river pumping station outside the base.

BRITISH DAILIES HIT LONDON (Reuters) — Promotion of the London edition of the Daily Mirror, a pro-Labor national tabloid with nearly 900,000 circulation, was disrupted Wednesday because of a political slowdown by members of a printing union demanding security guarantees. For the second day members of the national union of printing, bookbinding and paper workers entered an overtime ban and a "go-slow" policy at the International Publishing Corporation, which publishes the Mirror. The Daily Herald also published by International, was forced to print 20,000 fewer copies than usual.



GRAVES 400  
**PEAS** 2 37<sup>c</sup>  
15 OZ. TINS

CLOVER FARM  
**Catsup** 2 39<sup>c</sup>  
11 OZ. BOTS.



FIRM, RED, RIPE  
**TOMATOES** CELLO TUBE 25<sup>c</sup>

GOLDEN RUSSET  
**APPLES** 5 43<sup>c</sup>  
LBS.

FRESH PRE CLEANED  
**CARROTS** 2 LB. CELLO 23<sup>c</sup>

**SPINACH** 10 OZ. PKG. 33<sup>c</sup>

**No GIMMICKS... No PREMIUMS... JUST PLAIN LOW PRICES**

GRAVES APPLE  
**JUICE** 48 OZ. TIN 35<sup>c</sup>

MONARCH CAKE  
**MIXES** 2 35<sup>c</sup>  
POUCH PAKS

MILD P.E.I.  
**CHEESE** 3 LB. 49<sup>c</sup>

CLOVER FARM CHOICE  
**Tomatoes** 28 OZ. TIN 29<sup>c</sup>

SUCCESS LIQUID HEAVY DUTY  
**WAX** 20 OZ. TIN 63<sup>c</sup>

HERSHEY CHOCOLATE  
**SYRUP** 1 LB. TIN 29<sup>c</sup>

A.B.C. PINK  
**SALMON** 8 OZ. TIN 29<sup>c</sup>

CLOVER FARM INSTANT  
**COFFEE** 1 OZ. JAR 93<sup>c</sup>

FORTUNA OR LEE SLICED  
**PINEAPPLE** 2 20 OZ. TINS 49<sup>c</sup>

SOUTHERN CROSS SOLID  
**TUNA** 7 OZ. TIN 29<sup>c</sup>

PRINCE EDWARD CHICKEN  
**HADDIE** 2 15 OZ. TINS 55<sup>c</sup>

HEINZ TOMATO  
**SOUP** 3 10 OZ. TINS 39<sup>c</sup>

MARVEN'S ASSORTED  
**COOKIES** 3 PKGS. 89<sup>c</sup>

NEW from Kellogg's  
**Froot Loops**  
REAL FRUIT FLAVOUR IN A SUGAR-CRYSTALLIZED OAT CEREAL  
7 OZ. PKG. 33<sup>c</sup>

CLOVER FARM  
**CREAM CORN** 2 20 OZ. TINS 43<sup>c</sup>

NEW STOCK  
**PITTED DATES** 2 LBS. 35<sup>c</sup>

HAIR DRESSING  
**BRYLCREEM** LARGE TUBE 69<sup>c</sup>

CLOVER FARM (Valentine Wrapped)  
**Chocolates** 14 oz. Box 79<sup>c</sup>



GOVERNMENT INSPECTED BLADE OR SHOULDER  
**ROAST** 49<sup>c</sup> LB.

PRIME RIB  
**ROAST** 63<sup>c</sup> LB.

FRESH BEEF  
**BRISKET** 35<sup>c</sup> LB.

GRADE "A" READY CLEANED  
**CHICKEN** 39<sup>c</sup> LB.

FIRST GRADE P.E.I.  
**BUTTER** 56<sup>c</sup> LB.

PRICES EFFECTIVE 'TIL CLOSING TIME SAT. FEB. 15

YOUNG, TENDER  
**BEEF LIVER** LB. 35<sup>c</sup>

EASTPACK  
**COD FILLETS** 1 LB. PKG. 33<sup>c</sup>

ZERO PAK  
**FROZEN PEAS** 12 OZ. PKG. 21<sup>c</sup>