

DAILY MARKET QUOTATIONS

SUMMARY

By THE CANADIAN PRESS
Toronto: Market lower, trading moderate.
New York: Market lower, trading fairly active.

NEW YORK

NEW YORK (AP)—The stock market took a sharp loss on average Monday as some important blue-chip shares showed weakness. Trading was moderate.

Volume of 3,000,000 shares was below average for this year and compared with Friday's 3,900,000.

Du Pont took a loss of 3/4 at 25 1/2. Du Pont's directors declared the usual dividend instead of proposing a stock split.

Selling spread to other blue chips. General Electric fell 1/4. Sears, Roebuck 1/4. Westinghouse Electric & Eastman Kodak 2/8.

The Dow Jones industrial average reflected these losses and went down 8.35 to 330.67.

The Associated Press average of 60 stocks declined 2.7 to 340.8 with industrials down 4.6, rails down 1.7, a new low for the year, and utilities down .5.

Of 1,417 issues traded, 638 declined and 432 advanced. New highs for the year totalled 78 and new lows 39.

Wall Street had expected President Johnson's proposal to Congress that revise taxes to be cut by nearly \$4,000,000,000.

The list of 16 most active stocks showed 11 losers, two gainers and three unchanged.

Radio Corp. was the most active stock, off 1/2 at 35 1/2 on 56,600 shares.

Among Canadian issues, Walker Gooderham gained 1/4. Distillers Seagrams and Dome Mines 1/8. International Nickel led 1/4.

Aluminum Ltd., Canadian Pacific, Hudson Bay Mining 1/4.

Among Canadian issues on the American exchange, Canadian Javelin gained 3/4. Brazilian Tracton, Canadian Marconi and Fargo Oil 1/4. Scurry Rain-bow Oil lost 1/4 and Preston 3/8.

What stocks did:
Mon. Fri.
Advances 432 543
Declines 638 572

Unchanged 297 264
Total issues 1417 1379

NEW YORK CLOSING STOCKS
By The Associated Press

Index 330.67
Dow Jones 330.67
S&P 500 330.67

Industrial volume was 230,400 shares and mines and oils 1,320,000. The composite index was off 0.2 at 165.8.

Industrials were off 1.0 at 173.0. Canada Cement down 3/4 to 57 1/2 and Chemcel 1/4 to 18 1/2, and utilities dropped 0.2 to 155.1. Brinco climbed 1/2 to 6.

Banks were off 1 1/2 at 134 1/2. Nova Scotia fell 1/4 to 80 and Montreal 3/4 to 67 1/2. Imperial Commerce was off 3/4 to 70 and Canadiane Nationale 1/2 to 75.

Papers were unchanged at 140 1/2. Price Bros. added 1/4 to 42 1/2 and Abitibi lost 1/4 to 13.

Metals were mixed in the base section. Hudson Bay Mining added 1/2 to 78 and International Nickel lost 1/4 to 90 1/2.

Among speculative mines, Camflo climbed 10 cents to \$2.60 and Black Hawk five cents to \$3.25. Dolan lost three cents to 60 and James Bay three cents to 53. Chemalloy was off three cents at \$1.87.

MONTREAL CLOSING STOCKS
By The Canadian Press

Complete quotation of Monday transactions. Quotations in cents unless marked s. -d. Ex-dividend, ex-rights, ex-warrants. Net change in from previous closing day.

Stock sales High Low Close Chg
Albion 440 415 415 415 +1/4
Algonquin 615 575 575 575 +1/4

Alumina 1145 1075 1075 1075 +1/4
Alumina 2 85 84 84 +1/4

Alumina 3 85 84 84 +1/4
Alumina 4 85 84 84 +1/4

PRODUCE

MONTREAL (CP)—Agricultural department quotations: Eggs. Wholesale prices to country stations: fibre cases, extra-large 36, large 35, medium 33, small 29, B 30, C 23. Offerings adequate demand fair.

Butter. Current receipts tenderable 92 score 54 1/2, 93 score 55 1/2.

Cheese. Delivered Montreal, waxed, current receipts, whole sale, Quebec white 37 1/2, colored 38.

Skim milk powder. Spray process No. 1 in bags 14 1/2, roller process No. 1 in bags 13 1/4, feed 13, butter milk powder, feed 11-12, whey powder 4 cents.

Potatoes. Wholesale selling prices, new N.B. 50s 3.00-3.10; 10s 67.60, P.E.I. 75s 4.50-4.75; 50s 3.10-3.75, 10s 70-72.

LIVESTOCK

MONTREAL (CP)—Cattle prices were steady to 50 cents higher and calves steady Monday on the Montreal livestock markets. Trading was moderate.

Receipts: 189 cattle, 180 calves, 13 hogs.

Choice steers 24.25-24.75, good 23.25-24, medium 20.75-23, cull 18.50-20.50.

Medium heifers 18.75-19.50, good 18.75-19.50, medium 15.50-16, cull 12.14-15.

Good cows 15-17.50, medium 11.50-15, cull 7-10. Good bulls 17.50-19.25, common and medium 15-17.

Good vealers 24-27, tops 28, medium 20-23, common 13-19. No hog prices established.

lower in moderately heavy trade.

In the main, list, Bank of Nova Scotia was down 1/4 to 80 and CPR and Canada Steamship each lost 1/4 to 63 1/2 and 63 1/2.

Burns jumped 2 1/2 to 32 and traded at a high of 32 1/2.

In oils, Raffin fell 1/8 to \$7.60 on 34,065 shares while Anglo United Development and Dynamic each fell 7 cents to \$1.36 and 76 cents in heavy trading. Acme Gas lost 7 1/2 cents on 110,650 shares.

Hudson Bay rose 1/2 to 78 among senior base metals and Denison lost 1/4 to 30 1/2.

Calgary and Edmonton dropped 1/4 to 28 1/2 among senior western oils.

Violamex paced speculative mines, rising 35 cents to \$3.75 on volume of 129,605 shares. The stock hit a high of \$3.85. McWatters fell 10 to 32 cents on 155,550 shares.

On index, industrials fell 33 to 177.22, the Toronto stock exchange index 77 to 166.51, oils 1.33 to 111.42 and base metals rose 12 to 84.52 and volume was 4,479,000 shares compared with 4,519,000 Friday.

TORONTO CLOSING STOCKS
By The Canadian Press

Complete quotation of Monday transactions. Quotations in cents unless marked s. -d. Ex-dividend, ex-rights, ex-warrants. Net change in from previous closing day.

Stock sales High Low Close Chg
Albion 440 415 415 415 +1/4
Algonquin 615 575 575 575 +1/4

Alumina 1145 1075 1075 1075 +1/4
Alumina 2 85 84 84 +1/4

Alumina 3 85 84 84 +1/4
Alumina 4 85 84 84 +1/4

Alumina 5 85 84 84 +1/4
Alumina 6 85 84 84 +1/4

Alumina 7 85 84 84 +1/4
Alumina 8 85 84 84 +1/4

Alumina 9 85 84 84 +1/4
Alumina 10 85 84 84 +1/4

Alumina 11 85 84 84 +1/4
Alumina 12 85 84 84 +1/4

Alumina 13 85 84 84 +1/4
Alumina 14 85 84 84 +1/4

Alumina 15 85 84 84 +1/4
Alumina 16 85 84 84 +1/4

Alumina 17 85 84 84 +1/4
Alumina 18 85 84 84 +1/4

PRODUCE

MONTREAL (CP)—Agricultural department quotations: Eggs. Wholesale prices to country stations: fibre cases, extra-large 36, large 35, medium 33, small 29, B 30, C 23. Offerings adequate demand fair.

Butter. Current receipts tenderable 92 score 54 1/2, 93 score 55 1/2.

Cheese. Delivered Montreal, waxed, current receipts, whole sale, Quebec white 37 1/2, colored 38.

Skim milk powder. Spray process No. 1 in bags 14 1/2, roller process No. 1 in bags 13 1/4, feed 13, butter milk powder, feed 11-12, whey powder 4 cents.

Potatoes. Wholesale selling prices, new N.B. 50s 3.00-3.10; 10s 67.60, P.E.I. 75s 4.50-4.75; 50s 3.10-3.75, 10s 70-72.

LIVESTOCK

MONTREAL (CP)—Cattle prices were steady to 50 cents higher and calves steady Monday on the Montreal livestock markets. Trading was moderate.

Receipts: 189 cattle, 180 calves, 13 hogs.

Choice steers 24.25-24.75, good 23.25-24, medium 20.75-23, cull 18.50-20.50.

Medium heifers 18.75-19.50, good 18.75-19.50, medium 15.50-16, cull 12.14-15.

Good cows 15-17.50, medium 11.50-15, cull 7-10. Good bulls 17.50-19.25, common and medium 15-17.

Good vealers 24-27, tops 28, medium 20-23, common 13-19. No hog prices established.

lower in moderately heavy trade.

In the main, list, Bank of Nova Scotia was down 1/4 to 80 and CPR and Canada Steamship each lost 1/4 to 63 1/2 and 63 1/2.

Burns jumped 2 1/2 to 32 and traded at a high of 32 1/2.

In oils, Raffin fell 1/8 to \$7.60 on 34,065 shares while Anglo United Development and Dynamic each fell 7 cents to \$1.36 and 76 cents in heavy trading. Acme Gas lost 7 1/2 cents on 110,650 shares.

Hudson Bay rose 1/2 to 78 among senior base metals and Denison lost 1/4 to 30 1/2.

Calgary and Edmonton dropped 1/4 to 28 1/2 among senior western oils.

Violamex paced speculative mines, rising 35 cents to \$3.75 on volume of 129,605 shares. The stock hit a high of \$3.85. McWatters fell 10 to 32 cents on 155,550 shares.

On index, industrials fell 33 to 177.22, the Toronto stock exchange index 77 to 166.51, oils 1.33 to 111.42 and base metals rose 12 to 84.52 and volume was 4,479,000 shares compared with 4,519,000 Friday.

TORONTO CLOSING STOCKS
By The Canadian Press

Complete quotation of Monday transactions. Quotations in cents unless marked s. -d. Ex-dividend, ex-rights, ex-warrants. Net change in from previous closing day.

Stock sales High Low Close Chg
Albion 440 415 415 415 +1/4
Algonquin 615 575 575 575 +1/4

Alumina 1145 1075 1075 1075 +1/4
Alumina 2 85 84 84 +1/4

Alumina 3 85 84 84 +1/4
Alumina 4 85 84 84 +1/4

Alumina 5 85 84 84 +1/4
Alumina 6 85 84 84 +1/4

Alumina 7 85 84 84 +1/4
Alumina 8 85 84 84 +1/4

Alumina 9 85 84 84 +1/4
Alumina 10 85 84 84 +1/4

Alumina 11 85 84 84 +1/4
Alumina 12 85 84 84 +1/4

Alumina 13 85 84 84 +1/4
Alumina 14 85 84 84 +1/4

Alumina 15 85 84 84 +1/4
Alumina 16 85 84 84 +1/4

Alumina 17 85 84 84 +1/4
Alumina 18 85 84 84 +1/4

PRODUCE

MONTREAL (CP)—Agricultural department quotations: Eggs. Wholesale prices to country stations: fibre cases, extra-large 36, large 35, medium 33, small 29, B 30, C 23. Offerings adequate demand fair.

Butter. Current receipts tenderable 92 score 54 1/2, 93 score 55 1/2.

Cheese. Delivered Montreal, waxed, current receipts, whole sale, Quebec white 37 1/2, colored 38.

Skim milk powder. Spray process No. 1 in bags 14 1/2, roller process No. 1 in bags 13 1/4, feed 13, butter milk powder, feed 11-12, whey powder 4 cents.

Potatoes. Wholesale selling prices, new N.B. 50s 3.00-3.10; 10s 67.60, P.E.I. 75s 4.50-4.75; 50s 3.10-3.75, 10s 70-72.

LIVESTOCK

MONTREAL (CP)—Cattle prices were steady to 50 cents higher and calves steady Monday on the Montreal livestock markets. Trading was moderate.

Receipts: 189 cattle, 180 calves, 13 hogs.

Choice steers 24.25-24.75, good 23.25-24, medium 20.75-23, cull 18.50-20.50.

Medium heifers 18.75-19.50, good 18.75-19.50, medium 15.50-16, cull 12.14-15.

Good cows 15-17.50, medium 11.50-15, cull 7-10. Good bulls 17.50-19.25, common and medium 15-17.

Good vealers 24-27, tops 28, medium 20-23, common 13-19. No hog prices established.

lower in moderately heavy trade.

In the main, list, Bank of Nova Scotia was down 1/4 to 80 and CPR and Canada Steamship each lost 1/4 to 63 1/2 and 63 1/2.

Burns jumped 2 1/2 to 32 and traded at a high of 32 1/2.

In oils, Raffin fell 1/8 to \$7.60 on 34,065 shares while Anglo United Development and Dynamic each fell 7 cents to \$1.36 and 76 cents in heavy trading. Acme Gas lost 7 1/2 cents on 110,650 shares.

Hudson Bay rose 1/2 to 78 among senior base metals and Denison lost 1/4 to 30 1/2.

Calgary and Edmonton dropped 1/4 to 28 1/2 among senior western oils.

Violamex paced speculative mines, rising 35 cents to \$3.75 on volume of 129,605 shares. The stock hit a high of \$3.85. McWatters fell 10 to 32 cents on 155,550 shares.

On index, industrials fell 33 to 177.22, the Toronto stock exchange index 77 to 166.51, oils 1.33 to 111.42 and base metals rose 12 to 84.52 and volume was 4,479,000 shares compared with 4,519,000 Friday.

TORONTO CLOSING STOCKS
By The Canadian Press

Complete quotation of Monday transactions. Quotations in cents unless marked s. -d. Ex-dividend, ex-rights, ex-warrants. Net change in from previous closing day.

Stock sales High Low Close Chg
Albion 440 415 415 415 +1/4
Algonquin 615 575 575 575 +1/4

Alumina 1145 1075 1075 1075 +1/4
Alumina 2 85 84 84 +1/4

Alumina 3 85 84 84 +1/4
Alumina 4 85 84 84 +1/4

Alumina 5 85 84 84 +1/4
Alumina 6 85 84 84 +1/4

Alumina 7 85 84 84 +1/4
Alumina 8 85 84 84 +1/4

Alumina 9 85 84 84 +1/4
Alumina 10 85 84 84 +1/4

Alumina 11 85 84 84 +1/4
Alumina 12 85 84 84 +1/4

Alumina 13 85 84 84 +1/4
Alumina 14 85 84 84 +1/4

Alumina 15 85 84 84 +1/4
Alumina 16 85 84 84 +1/4

Alumina 17 85 84 84 +1/4
Alumina 18 85 84 84 +1/4

MAY SALE



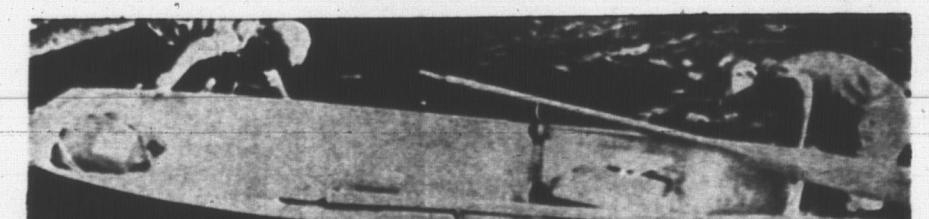
Fine Dinnerware!
PAY \$1.00 DOWN
... balance on easy monthly payments!

- MELODY 32.97
BELLE FIORE 22.97
WINDSOR 23.97
RUSSEL GLOW 25.97
MELINDA 32.97
INVITATION 25.97

WHERE Boating

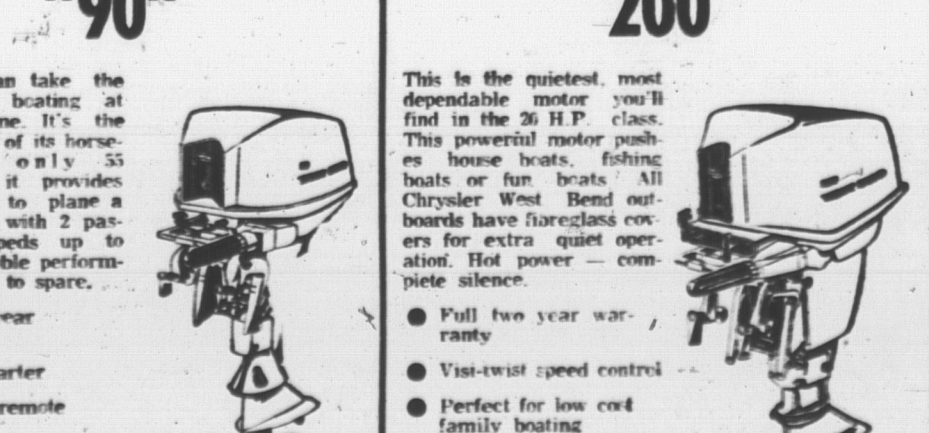
FUN BEGINS!
WITH THE FINEST IN OUT BOARD MOTORS AND BOATS

BANTAM CAR TOPPER BOAT



129.95
NO DOWN PAYMENT \$0.00 MONTHLY

CHRYSLER "West Bend" OUTBOARD MOTORS



WEST BEND SHRIMP 169.95
WEST BEND "90" 369.95
WEST BEND "200" 525.95

Service and Parts available on West Bend motors at Holman's
Charlotte Store Monday thru Thursday 9:00-5:30
Summerside Store Friday 9:00-9:00
Saturday 9:00-5:30

Advertisement for first mortgages with 75% interest rate and contact information for Dominion Building.