

Clayton Hare, Adjudicator, Has Notable Career

Conductor of the Calgary Symphony... Examiners, University of Saskatchewan... Member of the Canadian Music Council.

President



G. D. STEEL

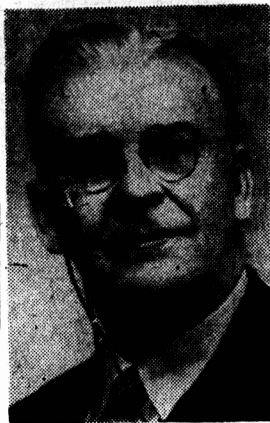
The Prince Edward Island Musical Festival Association again directs the attention of all lovers of music to its forthcoming Festival to be held in Charlottetown, May 5th to 10th inclusive.

Musical Festival Association

P.E.I. Musical Festival Association

Honorary President: Dr. L. W. Shaw, Charlottetown. President: Dr. G. D. Steel, Charlottetown.

Adjudicator



MR. REGINALD G. GEEN

Mr. Reginald Geen is a Canadian by birth but studied music in England and France. He has been a well known teacher of voice and piano for the past quarter century.

Scholarships

The Scholarship Committee is delighted and encouraged by the ready response to letters sent to former donors and prospective contributors.

Secretary



MRS. EDWIN H. COOK

The P. E. I. Musical Festival Association is now affiliated with the Federation of Canadian Music Festivals and last year sent delegates to the Conference at Saint John, N. B.

Percentage Allotment

Mrs. J. J. Haley, Southport, convener of the Percentage Allotment Committee is now sending out questionnaires to those who apply for financial aid in music instruction.

Hon. President



DR. L. W. SHAW

Deputy Minister and Director of Education

The Report of the Royal Commission on National Development in the Arts, Letters, and Sciences, popularly known as the Massey Report has this to say of Music Festivals.

The Prince Edward Island Association with its annual festival is one of the younger members of the family but already it has shown itself to be a vigorous and healthy member.

It must be a matter of great satisfaction to those who initiated the project as well as to those who are presently carrying on the work to know that, in the opinion of the Commission, their efforts in common with the efforts of others in our sister provinces are contributing so much to community life in Canada.

Truly has it been said that culture is something which comes from a people rather than something superimposed upon them.

Let us all support it and participate in its activities as far as possible.

A Message From Prince County

Citizens of Prince County are reminded of their opportunity for service in connection with the forthcoming Seventh Annual Prince Edward Island Musical Festival.

A Message From King's County

The growth of the Musical Festival in P. E. I. during the past six years has been incredible. Last year there were a thousand entries.

Report On Syllabus 1952

"A very good selection, and I think everyone should be pleased," was the comment of one of the musicians on the Syllabus Committee concerning Professor Hamer's choice of test pieces for 1952.

Refresher Course

The growth of our Musical Festival Association has been both rapid and successful, that it has not covered even more ground, has been largely due to lack of sufficient teachers to supply all interested communities.



"Music must take rank as the highest of the fine arts... as the one which, more than any other, ministers to human welfare."

The Seventh Annual Festival of Music

Sponsored By

The Prince Edward Island Musical Festival Association

WILL BE HELD IN CHARLOTTETOWN

May 5th, 6th, 7th, 8th, 9th and 10th

ENTRIES CLOSE MARCH 1st

Get A Syllabus And Mail Your Entry Before The Closing Date

This Is Your Festival - - - Enjoy It By Participating

If You Would Like To Assist In The Work Of The Association, Join It Now

This Advertisement is generously sponsored by:

CO-OP SUPER MARKET HENDERSON & GUDMORE

CLARKE FRUIT Co. Ltd. LePAGE SHOE Co.

Membership In Association

The fee for Life Members is \$25.00, for Group Membership \$5.00, and for Individual Members \$3.00 a year.