

# Metropolitan group probes housing, taxation and traffic

Housing, traffic safety, dual taxation, fire prevention, parks and playgrounds, and a number of matters relative to beautification of the metropolitan area came under the consideration of the Metropolitan Committee during its first meeting.

Members of the welfare bureau, provincial department of health, and the P.E.I. Housing Commission met with the metropolitan committee to discuss housing conditions.

The result was that a strongly worded resolution asking for action was forwarded to Premier Walter Shaw and Mayor A. Walter Gagnon.

It was felt that improvement of the housing situation partly depended on the housing survey but that much could be done before the report was implemented if the provincial and civic authorities had sufficient power to act.

The Metropolitan Committee continued to press for the elimination of the dump, control of contamination in the Charlottetown Harbour, removal of the Hillsboro Bridge and the remains of the North River Bridge, and other items of interest to citizens.

The remains of the North River Bridge were removed during 1962, and definite steps have been taken by the Minister of Health in the matter of harbour pollution. The dump problem in Charlottetown has been completed and it is the hope of the committee that some agreement for its use will be entered into with the districts surrounding Charlottetown. Dual taxation was also discussed.

**PARK NEEDS**

A panel discussion was held on park and playground needs.

for the metropolitan area. The need for such additional areas was stressed, as was the lack of swimming areas close to Charlottetown.

It was found that in all areas under discussion by the committee that there was a need for education and training in safety and in housing.

"A lot of our plans for 1963 will emphasize community improvement planning for 1964," said Donald F. Stewart, Bunbury chairman of the Metropolitan Committee. "Included will be promotion among our member districts for individual or co-operative ventures of a permanent nature, as well as the general cleaning and beautification of our district."

"Having no funds and no official position in the govern-

# New fire hall, sewer system are major Sherwood projects

Two major projects in Sherwood Village during the year were the completion of a new fire hall and a sanitary sewer system.

The fire hall, officially opened in December, was designed in such a way as not to lower the value of residential buildings surrounding it. Any one of the three fire trucks is able to leave the hall without moving the others, and all trucks can be filled with water at the same time from inside the hall. The department is now equipped with four phones.

The sanitary sewer system was completed in the eastern area of Waterloo, and drains into the Parkdale system. A survey was completed recently on the feasibility of serving the remainder of the village with a sewer system.

Population of the village has grown to 1,700 and the amount exceeded the \$1,100,000 mark. A year ago it was \$995,000. New building permits issued totalled \$1,800,000.

Long range plans include the setting up of funds to establish parks and playgrounds.

Various improvements in Parkdale during the year were:

- Two miles of streets were completed with permanent pavement, completing most of the paving program in the village.
- The provincial government laid approximately one mile of sidewalk on St. Peter's Road, and the village constructed 1,600 feet of sidewalk on Kensington Road and Mount Edward Road.
- All street lights were changed to mercury vapor, and 10 fire hydrants were installed.
- A new truck was purchased for the fire department. The equipment includes a 1100 gallon tank and front end 500 gpm Coventry pump with power take off from the truck motor.
- Population increase in the village amounted to 120 persons, and new construction raised the assessment by \$194,000.
- The Sherwood sewer system within the same watershed was hooked up with the Parkdale trunk line.
- During the year eight acres of land were bought for development of a public park. The 1963 budget included provision for further plans for the park.

# Parkdale lays two miles of streets

IN Prince Edward Island and District

When you think of the Finest

A look at our New Showroom and Warehouse

**BUILDING MATERIALS**

You automatically think of:

**Chandler Bros. Limited**

And it's been that way for 16 years!

Leading Brand Name Products

**BIG TEA GROWER**

Indonesia is the world's third largest tea producer, delivering about 100,000 pounds year.

**EXPORTS FURS**

Fur and leather goods are major items in Bulgaria's export trade and are sent to some 25 countries.



# Georgetown is progressing

During the year 1962 the town of Georgetown carried out regular maintenance on streets, sidewalks and public buildings. The paving of town roads has been completed in 1961 as well as the building of a reservoir for fire fighting purposes. No major projects were undertaken in the year just ending.

However, a new firefighting tank and other fire fighting equipment was added to the fire department.

It is hoped that the present year will see a new fire hall erected and some action started to establish a much needed sewage disposal system.

# Quality and Progress Go Hand in Hand

at Archer and MacDonald Ltd.

*Elegant! Exciting! Unbelievably Low-Priced!*

**Top Quality Dinette Suites**

We are just received from Canada's Foremost Manufacturer of Dinette Suites, a limited quantity of FACTORY CLEAR-OUTS. Perfectly O. K. other than being discontinued styles. We are therefore able to offer these sets at wonderful savings. Some in Chrome and some in Brown. Large Tables 36 x 48 with lock-back lid opening to 60" extended. Handsome Chairs in combination covers and plaids.



3 piece sets - Table and 4 Chairs - Nationally Advertised during all of 1962 at \$149.00	<b>99.95</b>	7 piece sets - Table and 6 Chairs - Nationally Advertised during 1962 at \$229.00	<b>149.00</b>
--	--------------	---	---------------

NOW ONLY BUT QUANTITIES ARE LIMITED AND CANNOT BE REPEATED

To beautify your home with top grade furniture at Everyday Low Prices. You owe it to yourself to see these amazing values today at

**ARCHER & MACDONALD LTD. IN PARKDALE**

IT'S STOCKING TIME AT ARCHER & MACDONALD LTD.

With that comes a clearance of one of a kind items, damaged goods, discontinued styles etc. etc. It all adds up to Great Savings for our customers. Clearance items include chairs and rockers, occasional tables, livingroom suites, bedroom suites and numerous other items. A trip to Archer & MacDonald Ltd. right now could save you many, many dollars on the items you have been waiting to buy. Do not wait any longer come see us today. You'll be glad you did.

See the special grouping of Chairs and Rockers **\$48.08**

Values to **\$69.95** Going now at just

**ARCHER & MACDONALD Ltd.**

Open Every Night Until 9:00 Free Transportation on Request

# Imperial Oil develops with Island's prosperity

From the days of wooden sailing ships to modern steel hulls, tankers, a special kind of quarters of a century, Imperial Oil has been serving the petroleum needs of Prince Edward Island.

It all began in 1885 when S.S. Shatford and J.F. Shatford went into the petroleum business in Halifax to serve the province of Prince Edward Island, and Nova Scotia. The petroleum product then in demand was kerosene or "red" oil, which the Shatfords purchased from Standard Oil of New York in Sweden, barrels and transported to this province in sailing vessels. In 1890 Standard Oil of New York took over the Shatfords. Bore interests organized Eastern Oil Company in 1896. The name was changed to Imperial Oil Limited.

In keeping pace with the development of Prince Edward Island, the demand here for Imperial's products has increased in volume and variety. From wooden barrels of kerosene for oil lamps of the island, the company now supplies P.E.I. by tankers, railway cars, and motor transport with millions of gallons of gasoline, fuel and diesel oils, high octane aviation fuels, stove oil, asphalt, specialty lubricants and other products from its Halifax refinery.

company's operators in P.E.I. In connection with automobile petroleum products, it is interesting to note that the automobile did not come to the Maritimes as easily as it did to other provinces. There were some farmers in Prince Edward Island who objected so strenuously that in 1909 an order was issued that prohibited the use of the automobile on the island. It was as late as 1917 when unrestricted use of the automobile was granted.

Today Imperial Oil stands ready to supply the needs of more than 26,000 licensed cars and trucks in the island and the thousands of tourists who traverse the splendid highway system of the Garden of the Gulf. It is also interesting to note that Imperial's Atlantic marketing region manager is W.W. Shatford, son of S.S. Shatford, who introduced petroleum to Prince Edward Island. Truly Imperial Oil has paced Prince Edward Island's progress over the years.

# MEMORIAL CRAFTSMEN SINCE 1870...

**MILLIONS INVESTED**

From those early days when sailing vessels turned their barbed products over to jobbers for sale, the company has built up a marketing network in Prince Edward Island of marine terminals, agent bulk plants, distribution centres, sales force and modern service stations with an investment naturally followed, and in 1945 a complete line of men's furnishings and accessories was added.

Mr. Mill retired from active participation in the business about two years ago and Mrs. Robertson, who joined the firm in 1946, and has a wealth of experience in men's wear, became manager.

Mr. Robertson is assisted by Barbara Dowie, a valuable employee for more than 10 years. Mrs. Ethel Compton is the bookkeeper, a position she has held for several years, while Mrs. Millie Gallant, is the firm's tailor and has capably executed all types of alterations with merchandise sold there for the past 15 years.

The policy of Maurice Mill Ltd. over the years has remained constant - to purchase from long established, dependable firms in order to provide the best dollar value for the customers.

Monuments have been used since the days of early Hebrew history as a way to pay tribute to loved ones.

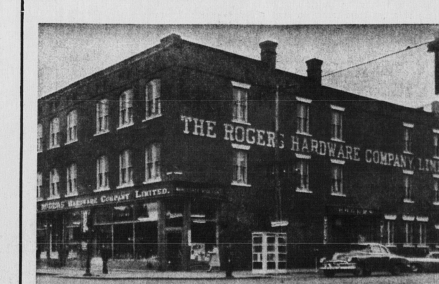
We take pride in the fact that monument building is a time-honored art, and we also take pride in the fact that our business was established shortly after Confederation.

Today, as in the ancient past, the use of monuments remains the same... your token of remembrance... your token of esteem to those you hold dear.

**WERE BECK & SON**

MONTAGUE CHARLOTTETOWN

# The Rogers Hardware Co. Ltd. 107th year of Service



Since 1857 city and country residents, as well as tourists, have recognized the name Rogers Hardware as distributors of the highest quality hardware supplies. The confidence built up through years of fair dealing with Islanders has built our business, until now it is the largest hardware wholesaling and retailing in this Province.

Wise Owners Protect Their Homes and Buildings with famous **GLIDDEN PAINTS**

Nothing preserves like paint... no paint preserves like GLIDDEN paint. There is a GLIDDEN paint for every special job that can occur. On your next paint job... specify and use GLIDDEN paint, from Rogers Hardware.

**INTERIOR PAINT**

- Spred Lustre
- Spred Satin
- Jap-A-Lac
- Spred Tread
- Floor Enamel
- Spred House Paint

**EXTERIOR PAINT**

- Endurance
- Marine Paints
- Rippon Yachting Paints

For Housewares or Gift Shop in **THE GIFT CENTRE**

There's an outstanding selection of fine quality cooking utensils displayed at all times in Rogers Gift Centre. In addition gift shoppers will find a superb selection of china, novelties, glassware, trays, woodenware... everything you could want for interesting shower gifts. Visit the Gift Centre soon.

**THE ROGERS HARDWARE CO. LTD.**

"If It's Hardware We Have It"

137 Queen Street Charlottetown Dial 4-9501