

On campus to commemorate St. Patrick's Day. There will also be an exhibition of artifacts from the Irish P.E.I. settlers. The exhibition, set up on Thursday, opens officially Friday, St. Patrick's Day in the Robertson Library.

Students and the public are welcome to examine the exhibition, named "Old Ireland and New Ireland" by the IHS, Friday and Saturday.

HUNT CONTINUES 14,000 SEALS SHOT

GRAND FALLS, N.F.L.D.
Landsmen operating in small vessels out of fishing ports along Newfoundland's Notre Dame and White Bays have taken about 14-thousand seals so far this winter.

A Federal Fisheries Regional office at Grand Falls says the number shot by the landsmen is up between 30 and 40% over this time last year. The landsmen's harvest involves seals one year old or older. Their season opened in Feb. and closes May 15th with the quota for the North-eastern Nfld. region set at 40 thousand.

NEWS FLASH

Just prior to press time on Wednesday afternoon, the U.P.E.I. Student Union cleared up the monetary difficulties concerning the Fabulous Platters. In conjunction with the services of Ron Dalzell, Attorney at Law, the Student Union worked out a compromise deal. As a result, the Union is paying the Platters less than 40 per cent of what was charged.

society went public, and in just one week, over 100 people have joined.

Future plans of the Society include the study of local history, folklore, folk music, Irish recipes, etc.; collection of archives and museum items, as well as cemetery studies and the continuation of annual exhibitions at various locations throughout the Island.

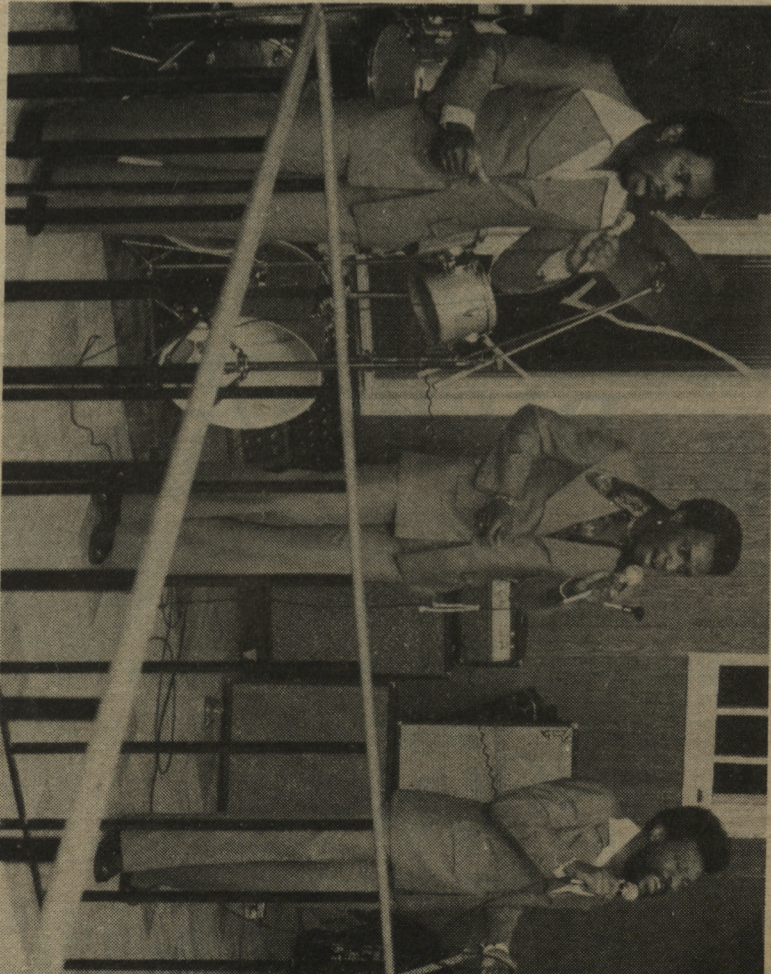
The Fisheries Department spokesman says the main herd appears to be farther North than earlier anticipated and ice is believed to be thin in the area North of the spotted islands.

HIGH EST COST CANADIAN TUITION

The Maritime Provinces Higher Education Commission, an advisory body to the Maritime Council of Premiers, announced in a report Wednesday that some of its past policies are having a deteriorating effect on the quality of education in the region.

result arrived late for their performance. With the students growing increasingly impatient, the band finally hit the stage well after 11 o'clock at night. Even then they were far from their usual best and unrest amongst those who paid admission quickly became evident.

The Commission has been requiring institutions to fund all new programs through increased enrolment revenue. Increases in operating assistance to universities in the region have been the lowest in Canada for the past two years. This helps to widen an already existing disparity with other provinces. The report also states that Maritime universities already have the highest ready have the highest tuition fees in Canada. These universities, therefore, are restricted from improving their financial well-being through further increases.



THE PLATTERS APPEAR AT PIG N'WHISTLE.

executive could not come to terms with the entertainers. At that point our Student Union retained professional legal advice. The details social committee and the executive are not letting the matter go by unnoticed and are taking the appropriate action to clarify the matter.

News Views Sports Shorts Shows

NEWS
Canada World Youth page 2

VIEWS
Over a million quitters can't be wrong...Join the Majority - page 12 & 13

SPORTS
J.T. & JOCK TALK GO TO NEW YORK - page 9

SHORTS
Skateboards skin shins - page 19

SHOWS
A FEW MORE WORDS ABOUT MR. GOODBAR page 16