

THE SHAW GOVERNMENT BUILDING AN ISLAND OF OPPORTUNITY

PRINCE COUNTY



1st. District
BERT RIX C



1st. District
GERALD ROONEY A



2nd. District
HON. DR. GEORGE DEWAR C



2nd. District
R. A. GENDRY A



3rd. District
KEITH HARRINGTON C



3rd. District
HON. HENRY W. WEDGE A



4th. District
ERIC JESSOME C



4th. District
RON. MacDONALD A



5th. District
ARNOLD MacLENNAN C



5th. District
HON. DR. HUBERT McNEILL A

QUEENS COUNTY



1st. District
HON. FRANK MYERS A



2nd. District
HON. LLOYD MacPHAIL C



2nd. District
HON. PHILIP MATHESON A



3rd. District
RUSSELL DRISCOLL C



3rd. District
HON. ANDREW MacRAE A



4th. District
BENNETT CARR C



4th. District
DANIEL COMPTON A



5th. District
WALTHER GAUDET C



5th. District
TOM DAVIES A



6th. District
HON. M. A. FARMER C



6th. District
J. DAVID STEWART A

KINGS COUNTY



1st. District
PETER J. MacAULAY C



1st. District
KEITH MacKENZIE A



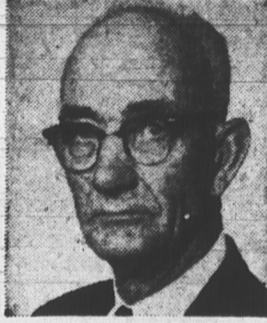
2nd. District
HON. LEO ROSSITER C



2nd. District
WALTER DINGWELL A



3rd. District
PRESTON MacLURE C



3rd. District
TOM CURRAN A



4th. District
WILLARD MacLEAN C



4th. District
ROBERT DORGAN A



5th. District
HARRY McCONNELL C



5th. District
DR. J. C. SINNOTT A

This is your Building Team ...

16 Conservative Members of the last House offering their services again ...
16 new candidates bringing their enthusiasm and drive to the task.
16 proven members . . . 16 new candidates. A good combination.

Let's KEEP BUILDING



1st. District — HON. WALTER R. SHAW C

Experience counts ...

Results show ...

Hard work wins confidence ...

These men are BUILDERS

**HELP THEM BUILD ---
AND WATCH THE ISLAND GROW**

VOTE PROGRESSIVE CONSERVATIVE MAY 30th

INSERTED BY THE PROGRESSIVE CONSERVATIVE ASSOCIATION OF PRINCE EDWARD ISLAND