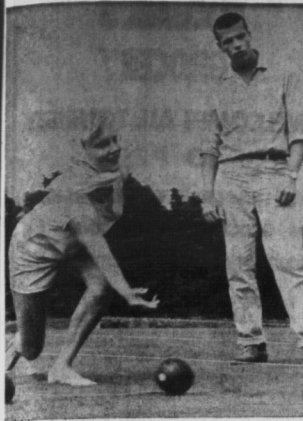


# Island's National Park leads Canada with million visitors



ATTRACTIONS INCLUDE—LAWN BOWLING . . .

Prince Edward Island National Park was established in 1907 and contains an area of approximately seven square miles. It extends along the north shore of the Island Province for a distance of nearly 25 miles.

Among its outstanding features are its magnificent beaches, its beaten broad and smooth by the constant action of the surf from the Gulf of St. Lawrence. Adjacent to these beaches, sand dunes and sandstone cliffs rise to considerable heights, and across the mouths of several bays, small islands and shoals give protection to the inner waters. The delights of salt-water bathing and relaxation on the sandy beaches are enhanced by the healthful climate.

The temperature is ideal, the air invigorating, and the water is warmer than at many points hundreds of miles to the south along the Atlantic Coast. Supervised swimming areas are provided in all main sections of the park.

### THREE SECTIONS

The park is composed of three main sections, each of which borders the seashore. The eastern, or Dalrymple-Stanhope section, extends from Tracadie Bay to Covehead Harbour and contains the administrative headquarters of the park.

The Brackley Beach section lies between Covehead Harbour and Rustico Bay, and is linked by a new bridge to the Dalrymple-Stanhope section.

The Cavendish or Green Gables section forms the western part of the park and extends along the coast from Rustico Harbour to New London Bay.

The park area also contains Rustico Island, as yet undeveloped, lying across the mouth of Rustico Bay. The Cavendish area includes Green Gables, immortalized in the novels of Lucy Maud Montgomery.

### FERRY SERVICE

The province of Prince Edward Island is accessible from the mainland Provinces of New Brunswick and Nova Scotia by modern ferry services, by steamship and by air service. The Canadian National Railways operate a railway and automobile ferry service between Cape Tormentine, N.B., and Port Borden, P.E.I., the year round. An automobile ferry service is also operated between Charlottetown, N.S., and Wood Islands, P.E.I., from May to November. During the summer tourist season these ferry services make several crossings daily. This year four ferries will make a record 24 trips daily. The ferry terminals at Cape Tormentine,

N.B., and Caribou, N.S., are served by the main provincial highway system.

Maritime Central Airways operate three return flights daily except Sunday, and one return trip on Sundays, between Moncton, N.B., and Summerside and Charlottetown, P.E.I., two return trips on Sundays between Moncton, N.B., and Summerside and Charlottetown, P.E.I., from June 25 to September 11, daily flights except Sunday from Charlottetown to Halifax and the Magdalen Islands. Trans-Canada Air Lines connect this service with other sections of Canada and the United States.

## 'Nearly everyone is a visitor here'

"Virtually every summer visitor to this province ultimately spends some time in the National Park," is the comment of park superintendent, Eric J. Kipping.

Mr. Kipping certainly can not be wrong, because figures show that during the summer season of 1961, nearly a million people visited the park.

That so many people should visit the beautiful stretch of shoreline that is the P.E.I. national park is not hard to understand. It has a coastal beauty that is difficult to duplicate in any part of Canada.

### 25-MILE STRETCH

The park is a ribbon of sandy beach and shady forest that stretches 25 miles along the gulf shore of the Garden Province. Rolling sand dunes and hardy shore grass with white capped waves rolling in from the blue Gulf of St. Lawrence, present an unforgettable seascape.

Despite the huge numbers of visitors to the park, the expanse of beach remains remarkably unscathed with the sand dunes providing abundant privacy for those who desire it.

A string of lifeguard stations and well qualified lifeguards provide plenty of supervision and an excellent safety factor in the recommended swimming areas.

### LOCATED IN FORESTS

Across the excellent Gulf Shore Road from the beaches are the campgrounds and rec-

reation areas located in shady evergreen and hardwood forests.

Cavendish campground has 226 completely serviced camp sites and 77 trailer ports while Stanhope campground boasts 158 serviced camp sites and 14 trailer parks. In addition 147 more camp lots are planned for development on Rustico Island.

Picnic areas abound the full length of the park with fireplaces and tables in shady glens providing a perfect setting for a snack in the open. In addition a number of kitchen shelters are located throughout the park.

No all accommodation is in campgrounds or trailer parks however. A number of excellent hotels and summer cottages are located just outside the park, most within walking distance of the beaches.

### LOTS TO DO

There is no lack of things to do at the National Park. Swimming, of course, is the principal form of recreation. Golf and tennis also rank high on the fun list. The excellent golf course and picturesque and historic Green Gables is a favorite of the golfing fraternity. Golfing in view of the rolling sea in the glens that inspired the famous Anne of Green Gables stories is apparently a most satisfying pastime.

The former home of Lucy Maud Montgomery, author of the Anne stories is located near

CONTINUED ON PAGE 14-A

Prince Edward Island National Park may be reached by highway from Fort Borden, Summerside, and Charlottetown. P.E.I. Dalrymple Beach, in the eastern section, is accessible from Charlottetown by paved highways Nos. 1 and 6 via Bedford and Grand Tracadie, a distance of 17 miles. Brackley Beach is 14 miles from Charlottetown by Highway No. 15. Green Gables and the western part of the park may be reached by paved highway from Charlottetown, via Hunter River and North Rustico, a distance of 27 miles. An alternative route to Green Gables may be taken via Kensington and Margate over Highway No. 7, which crosses the park at Cavendish. The distance from Fort Borden to the park by this route is 39 miles.

### GREEN GABLES

Green Gables, the farm house made known to thousands by the novel "Anne of Green Gables" and other related stories by Lucy Maud Montgomery, is situated in the western section of the park, within a short distance of Cavendish. For years it has been an unfading point of interest for visitors to Prince Edward Island, and is now available as a tea-room.

Although repaired and painted, the original building has been faithfully preserved in all its details, and an attendant is on hand to escort visitors through its rooms. Many other points of interest associated with the "Anne" stories, including the "Haunted Wood" and "Lover's Lane," are easily reached by paths and trails which lead from the building.

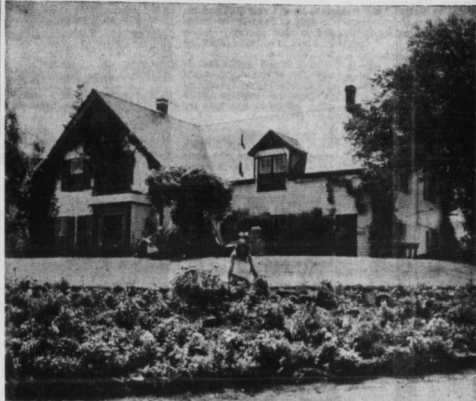
Part of the development in the Cavendish Beach area includes an 18 hole golf links and clubhouse, dressing room facilities for bathers, supervised swimming areas, a developing campground, and a recreation hall where games, dances, motion picture shows and theatricals are held.

### ISLAND BEAUTY

Although in sharp contrast to the rugged grandeur of Cape Breton, Prince Edward Island has a character and beauty all its own. Situated in the Gulf of St. Lawrence, it is the smallest yet one of the most beautiful of the provinces of Canada. Its amazing fertility, temperate climate, and delightful pastoral appearance have gained for it the title, "The Garden of the Gulf."



... FUN ALONG 25 MILES OF WHITE SANDY BEACHES ...



... GREEN GABLES, VISITED BY THOUSANDS FROM THE WORLD OVER

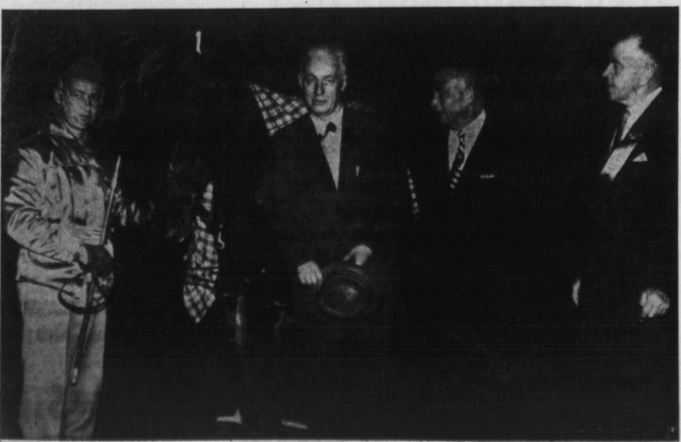
# HARNESS RACING

in Prince Edward Island -

RIGHTLY NAMED  
"The Kentucky of Canada"

Night Racing Begins June 2nd  
and Continues to October

OLD HOME WEEK and PROVINCIAL EXHIBITION  
Aug. 13 to 18 - 11 Scheduled Races



1961 GOLD CUP AND SAUCER WINNER

"OLD HOME WEEK" One Of The Best Livestock Exhibitions  
East of Quebec

THE CHARLOTTETOWN DRIVING PARK and PROVINCIAL EXHIBITION  
ASSOCIATION