

SPRING BARGAINS

NEW SPRING STOCK OF MEN'S AND BOYS' CLOTHING REDUCED NOW WHEN YOU NEED IT MOST

MEN'S 49.50 SUITS

- * FINE IMPORTED WORSTEDS
- * ALL WOOL GABARDINES
- * HARD WEARING DIAGONALS
- * LARGE SELECTION OF SHADES
- * SINGLE AND DOUBLE BREASTED

ONE PRICE **27.50**

- * MEN'S FINE WOOL TWEED SPORT COATS \$16.50
- * MEN'S NEW SPRING SPORT JACKETS \$8.95
- * MEN'S SPORT SHIRTS, Broken Sizes—To Clear \$2.00
- * MEN'S HEAVY QUALITY BIB OVERALLS \$3.95
- * MEN'S POPULAR MAKE DUNGAREES \$2.50
- * BOYS' NYLO GABARDINE PANTS, Regular \$4.95 \$3.50
- * BOYS' SANFORIZED DENIM JEANS \$2.25
- * BOYS' ASSORTED SPORT SHIRTS \$2.25

MEN'S 32.50 COATS

- * NYLON AND RAYON GABARDINE
- * PERMANENTLY SHOWERPROOF
- * HOLLYWOOD & SLIP-ON STYLES
- * SIZES 34 TO 44
- * GREYS - FAWNS - BLUES

ONE PRICE **15.00**

— BOYS' SUITS —

Selected from our regular stock—Tweeds, Gabardines and Coverts shades of blue, fawn and brown. Sizes 24 to 34. Reg. to \$19.50. **ON SALE NOW \$10.00**

BOYS' NAVY BLAZERS

All wool English Flannel. Regular double breasted with brass or pearl buttons. Reg. \$12.95. **NOW \$8.95**

BOYS' SPRING JACKETS

Gabardines and Heavy Cravenets—fully lined—assorted tones and plaids. Reg. \$5.95. **NOW \$3.95**

Hambly & Innis
MEN'S & BOYS' WEAR

METALS FOR INDIA

OTTAWA, (CP)—Canada has agreed to provide India with a plan of \$5,000,000 worth of copper and aluminum, the External Affairs department announced Wednesday. The money is to come out of Canada's \$25,000,000 a-year Colombo plan contribution to build up the economic strength of south and southeast Asia.

London Subway Serves District Nearly Size of P. E. Island

Canada's first subway opens in Toronto March 30. Here's a story about the world's oldest and largest underground system.

By RON EVANS
LONDON, (CP)—London's "tube," the 91-year-old "granddaddy" of the world's subway systems, is still growing. The bright red trains now roar along 286 miles of track, largely underground, to service a city and suburban area of 2,000 square miles—only a little smaller than Prince Edward Island.

Since the Second World War, 35 miles have been added to the world's largest subway system and plans call for another 60 miles at an estimated cost of £114,000,000. But directors of the government-owned London Transport executive are more concerned with improving rather than extending a service used by almost 600,000,000 passengers annually. Canadian visitors wonder how it can be done when the present system, which served as a model for those in Glasgow, Moscow, Stockholm, Copenhagen and Istanbul, whisks them to any part of the city in a matter of minutes and in comfort too.

Here's how it works: The tube traveller enters one of 277 stations scattered throughout the metropolitan area and purchases his ticket from a vending machine, which automatically provides change, or from one of several wickets. Line-ups at the ticket windows rarely run to more than four or five persons except at teeming centres such as Piccadilly. High-speed escalators and elevators take passengers to platforms at many stations. The escalators run at about 150 feet a minute and can handle 10,000 persons an hour. The longest escalator, at Leicester Square, drops 80 feet while the Hammersmith station elevator falls 192 feet below street level.

On the platform, the passenger probably waits three or four minutes. If he's travelling at a busy hour and from a main downtown station, the chances are he'll catch a train in less than 90 seconds.

Six-Coach Train

Most trains comprise six coaches, each seating 40 to 48 passengers. The latest have fluorescent lighting, wide windows and scarlet upholstery, patterned with the familiar LT bar-and-circle symbol. Smoking is permitted in some coaches.

All doors are air-operated and automatic. In wet weather they can be switched over to manual, push-button control so that only a few need be opened at suburban surface stations. Trains on all six main lines and the numerous branches run at an average speed of 20 miles an hour and reach that rate in 17 seconds from a standing start. Most passengers make one or more changes during a single trip—statistics show the average journey is 5½ miles long and takes 16 minutes—but the single ticket takes them all the way and is not surrendered until the last station. Switches from one line to another can be made at 18 interchange stations in central London.

Part of the continuing improvement program is taken up with repairing and renovating old stations. Some opened in 1863, when the world's first subway was burrowed four miles from Paddington to Farrington Street, are still in use.

Station Design

All stations are of the same functional design, although no two are exactly alike. In outer London they are either of multi-colored or tan brick and within the central area the walls are of polished granite to shoulder height and Portland stone above. Temperatures are kept at an average of 72 degrees year round.

cheques are drawn on savings accounts each year. The increase will bring the banks about \$2,000,000 yearly. The charge is the amount the banks deduct from a savings account for each cheque drawn. The new charges come into effect with the first quarter of the year. The banks will allow one free cheque for a quarterly balance of \$100; two free cheques for a \$200 balance, and three free cheques for \$300 or more.

Mr. Atkinson said that by increasing the interest rate on savings accounts to 2 per cent from 1½ last Dec. 1, the banks are paying an additional \$19,500,000 a year to depositors. **LIVELY TOUCH**
MALDEN, England (CP)—A jazz section will be included in the music and drama festival of the Malden and Coombe Youth Council.

At Our Store Today



HELENA RUBINSTEIN sends her Beauty Consultant to help you with your beauty problems!

Helena Rubinstein's personal representative will be here to give you an *Individual Analysis of Your Own Beauty Problems!* She will show you how you can look lovelier, smarter, younger—after just one visit! So, if you are worried about the condition of your skin... your hair... your figure... if you long for a new, more flattering hair-do—come, see Helena Rubinstein's personal representative. With your consultation you receive free: Your Individual Beauty and Skin Analysis; Skin Care Beauty Books; generous bottle of Silk Sheen Cream Shampoo.

her time is limited
Make your appointment NOW!
MOORE & McLEOD Limited

NEW SPRING COATS and SUITS

SPRING IS HERE --- TIME TO SELECT YOUR SPRING COAT OR SUIT NOW.

For casual good looks you would find it hard to beat our lovely coats and suits. Styled and priced just right for the budget wise. Choose from many beautiful shades—

LESS COATS \$22.50 to \$64.50 **LESS**
10% SUITS \$16.95 to \$79.50 **10%**

NEW SPRING DRESSES

ARE ARRIVING DAILY
Make an early choice while the selection is large.
\$3.95 to \$39.50

Use Our Lay-Away Plan — A Deposit Will Hold Any Garment.

The GREENDAL CO. LTD.
LADIES' STORE 150 GT. GEO. ST.

The Crow and the Pitcher

A THIRSTY CROW found a Pitcher with some water in it, but so little was there that, try as she might, she could not reach it with her beak, and it seemed as though she would die of thirst within sight of the remedy. At last she hit upon a clever plan. She began dropping pebbles into the Pitcher, and with each pebble the water rose a little higher until at last it reached the brim, and the knowing bird was enabled to quench her thirst.

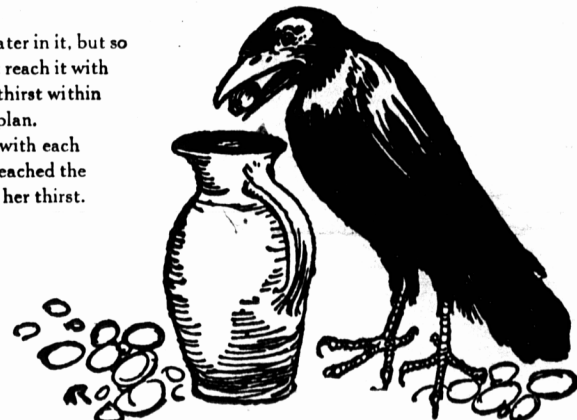


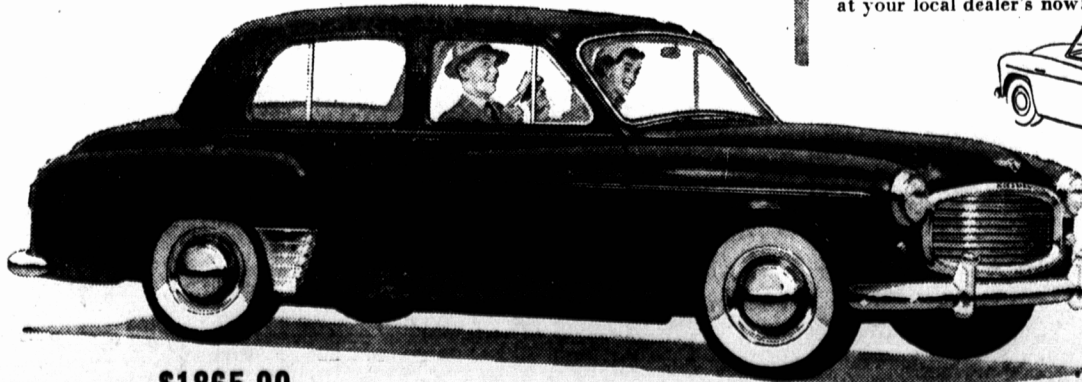
Illustration by Arthur Rackham, from the Heinemann Edition of Aesop's Fables.

MORAL: If you are thirsty for success, begin dropping a little money into a Savings Account at our nearest branch! With each deposit, your balance will rise a little higher, until at last you have the funds you need to make dreams come true. Be a knowing bird—visit our nearest branch today!

The Canadian Bank of Commerce

Like money in the bank!

The '54 Hillman Minx is money in the bank! You save when you buy your Hillman... you save while you drive your Hillman... you get back more when you trade in your Hillman! Here is the last word in automobile economy—yet the new '54 Minx is the most beautifully-styled, the most luxuriously fitted of its class. For real economy, breath-taking design and sparkling performance, see the '54 Hillman at your local dealer's now!



\$1865.00

1954 **HILLMAN Minx**

Use genuine Hillman parts—available through dealers—from coast to coast.

ROOTES MOTORS (CANADA) LIMITED • HALIFAX • MONTREAL • TORONTO • VANCOUVER
HILLMAN • HUMBER • SUNBEAM-TALBOT • COMMER • KARRIER • ROVER AND LAND-ROVER PRODUCTS

256 QUEEN STREET **MARTIN'S GARAGE** DIAL 4544