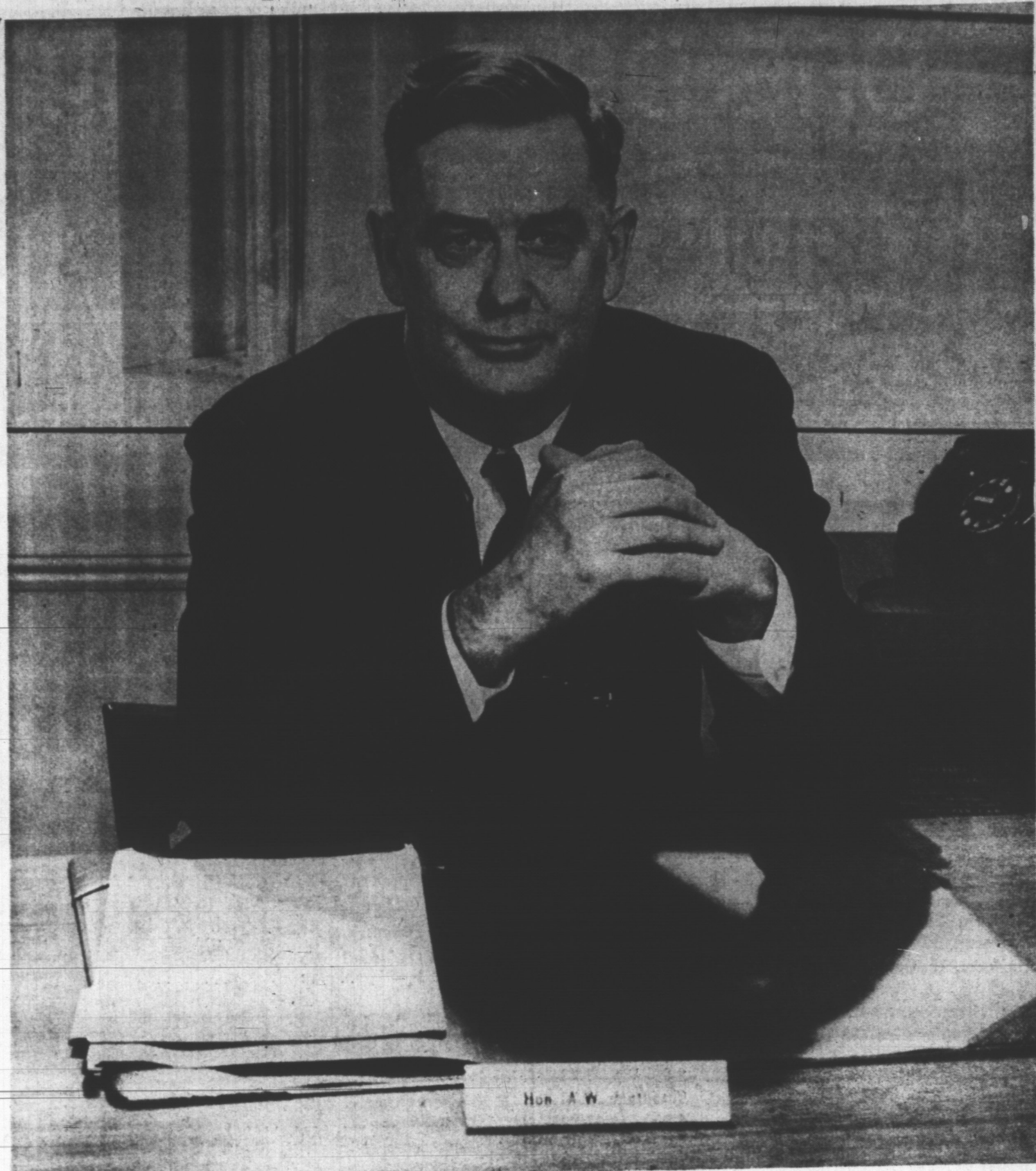


TO YOU
WHO LIVE
IN
PRINCE EDWARD
ISLAND ...



A Vote for a Liberal Candidate ...

Is a Vote for Continued Progress In This Province!

MAINTAIN THE MATHESON GOVERNMENT'S

PROGRAM OF PROGRESS...

A PROGRAM UNSURPASSED IN ISLAND HISTORY!

VOTE LIBERAL

ON SEPT. 1ST