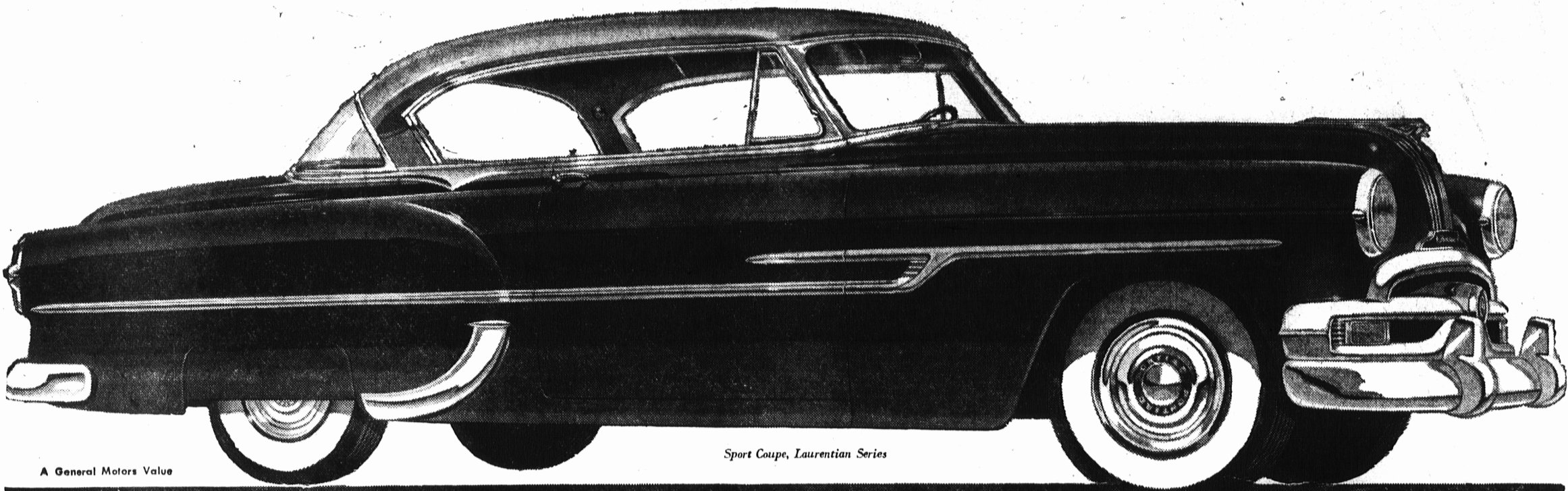


DRAMATIC! EXCITING! BRILLIANT!



A General Motors Value

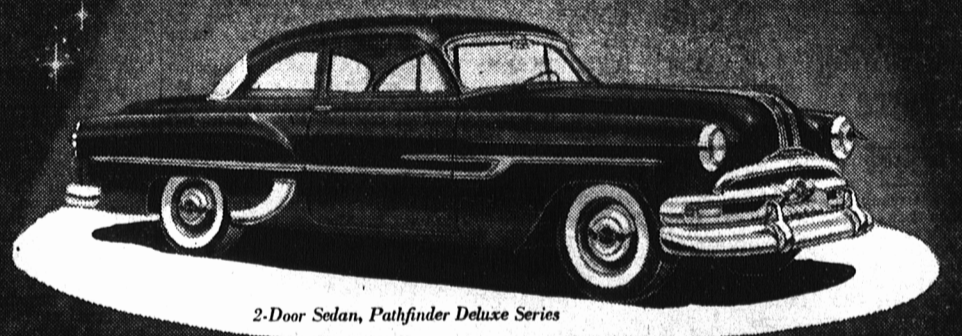
Sport Coupe, Laurentian Series

**PRESENTING
for 1953**

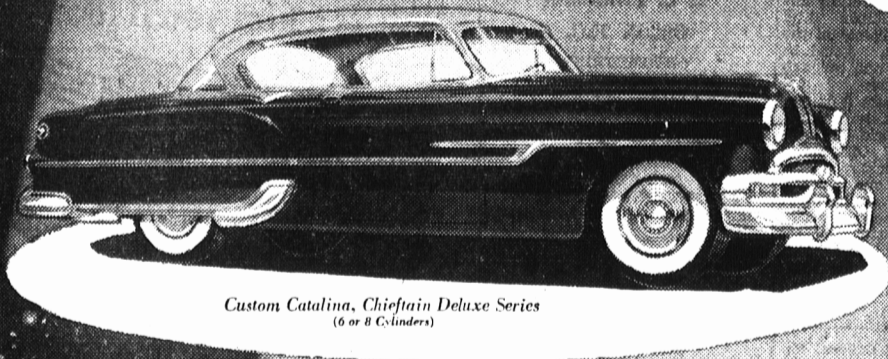
Pontiac's FIVE GREAT SERIES



2-Door Sedan, Pathfinder Series



2-Door Sedan, Pathfinder Deluxe Series



Custom Catalina, Chieftain Deluxe Series
(6 or 8 Cylinders)



4-Door Sedan, Chieftain Special Series
(6 or 8 Cylinders)



with a wealth of WONDERFUL FEATURES

Whatever you want in a motor car, you'll find in magnificent measure in the excitingly new 1953 Dual-Streak Pontiac. The new Pathfinder and Pathfinder Deluxe series are richly appointed, smartly styled, outstanding in power and performance—yet priced for the cost-conscious motorist. The lovely new Laurentian series offers you styling and comfort details hitherto available only in the costliest cars—plus youth-

ful, spirited lines and brilliant performance. And, in the new Chieftains, you'll discover new spaciousness, new roadability, new comfort—and a host of other features to add new prestige to the already famous Chieftain name. Truly, in every line and part, the Dual-Streak Pontiacs for '53 are dramatic proof that dollar for dollar, you can't beat a Pontiac. Visit your Pontiac dealer—now!

- ★ Famous Pontiac "8" and Improved Economy "6" with Greatly Increased Horsepower!
- ★ Wide-Horizon Vision — new, one-piece curved windshield on all models
- ★ GM Shade-Lite Tinted Glass,* with exclusive, graduated windshield tinting
- ★ New, Improved Powerglide* and Dual-Range Hydra-Matic Drive*
- ★ New GM Power Steering†—eliminating 75% of steering effort
- ★ New Autronic Eye*
- ★ New, beautiful Dual-Streak Styling, inside and out
- ★ Handsome new instrument panels
- ★ Key-Quick Starting

† Available as an option at extra cost on models equipped with automatic transmissions.

* Available as an option at extra cost.

ALLISON MacLEOD

126 Cumberland St.

Charlottetown

Phone 3160