

Both Stores. China Features A Sale Of "MELBA TURQUOISE"

ENGLISH BONE CHINA DINNERWARE (Exclusively HOLMAN'S On P.E.I.)

40 Piece Set--Service For Eight

Regular 53.98

SPECIAL

49.98

For A Limited Time Only



A wonderful adventure in gracious table appointment and yours at a Saving Price Too! "Melba Turquoise" is delicately patterned in leaves of turquoise shade with dainty gold tracery on a glowing white background. Smartly traditional in shape the 40 piece set consists of eight each cups and saucers, bread and butter plates, tea plates and dinner plates. It is an "Open Stock" pattern so you may add to your set at any time. Extra pieces available include platters, vegetable dishes, scallop dishes, tea pots, coffee pots, cream and sugars, and oatmeals.

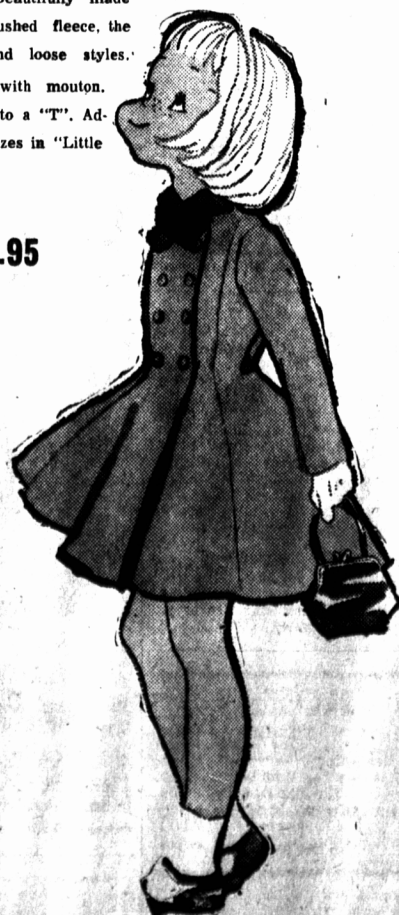
Purchase This Fine English Bone China Dinnerware Now And Save!
HOLMAN'S Both Stores CHINA DEPARTMENTS

Both Stores Youth Centre Feature
"LITTLE NUGGET" Coats
For Girl's

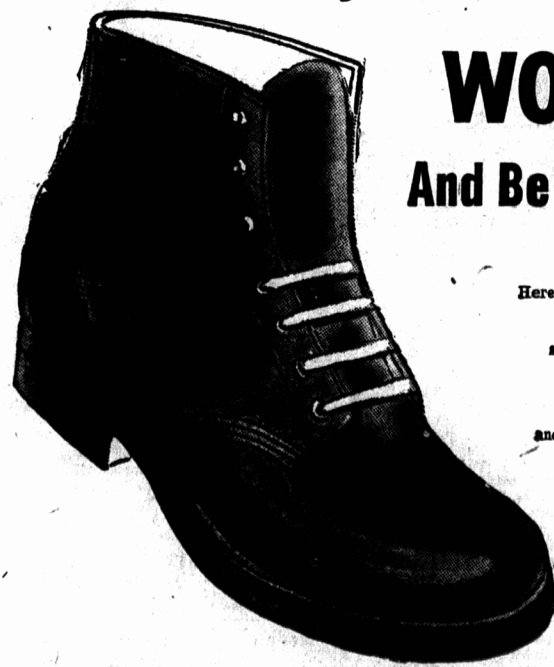


This Winter there'll be no shivers for Sister in one of our "Little Nugget" Coats - - - They really are younger set pets! Beautifully made of a variety of all wool fabrics including warm brushed fleece, the "Little Nugget" Coats are in both fitted princess and loose styles. Some are trimmed with muskrat and some with mouton. Charming youthful colors flatter the girls to a "T". Adjustable feature allows for yearly growth. Sizes in "Little Nugget" Coats is from 2 to 14.

24.⁹⁵ To 29.⁹⁵



Men! --- Buy Comfortable, Sturdy
WORK BOOTS
And Be Ready For The Job!



Here's the footwear you men need for the harvesting, or as a matter of fact, for any job. The Work Boots are strongly sewn, sturdily made on the proper lasts for all day comfort, and for long wear. Note the qualities you want in your Work Boots, then come in and be expertly fitted!

Plain toe, Blucher cut style of black pliable grain leather with full solid, nailed and sewn soles and heels of pancro rubber. These boots have a semi bellows tongue. Sizes 6 to 11, a pair--

4.49

Triple stitched moccasin toe, Blucher cut style of brown grain leather with full double, solid moulded soles and heels of sturdy pancro rubber, storm welted. Semi bellows tongue and fitted with leather insole. Sizes 6 to 11, a pair--

5.49

Plain toe, Blucher cut style of brown, smooth, heavy retan leather with full double nailed and sewn cork soles and heels. Outside heel counter, semi bellows tongue and leather insoles. Extra roomy fitting lasts in sizes 6 to 11, a pair--

6.98

Semi-hard plain toe, Blucher cut style of brown heavy retan leather with full double, Goodyear welted cork soles and heels. Pull-on loop, outside heel counter, riveted shank and ventilated solid leather insoles. Sizes 6 to 11, a pair--

8.98

**PLEASE CALL FOR YOUR
FREE
BABY WEEK PHOTO**
Now Ready In **HOLMAN'S YOUTH CENTRE
SUMMERSIDE**

HOLMAN'S Both Stores YOUTH CENTRE

HOLMAN'S Both Stores FOOTWEAR

HOLMAN'S - - SINCE 1857 BUILT ON VALUE! GROWING ON VALUE