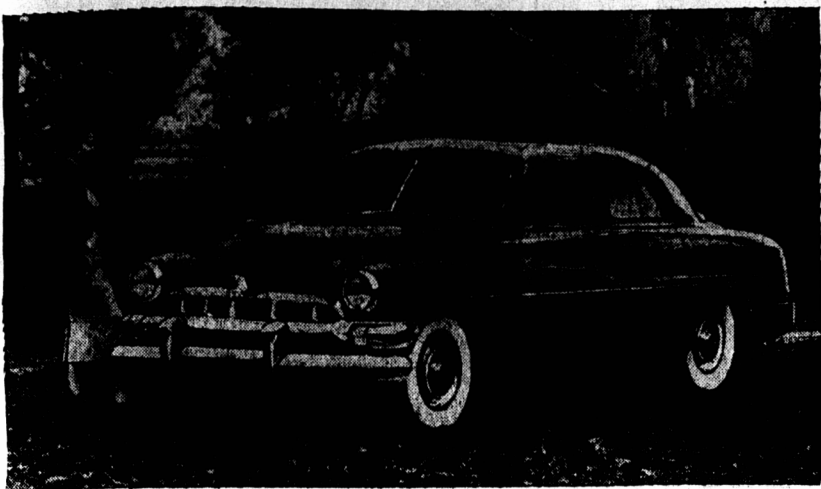


1951 Monarch Model



While retaining certain basic identifying features, the 1951 Monarch passenger cars which will be shown in the Canadian public for the first time tomorrow incorporate distinctive new body styling features which are immediately noticeable in front and rear end contours.

The 1951 model's 112-h.p. V-type cylinder engine has a number of mechanical revisions designed to provide quieter, more efficient performance.

Rear end styling is completely changed, starting with an enlarged rear view window which is 183 square inches greater in expanse than that of previous models. The new, fin-like fenders extend well

beyond the luggage compartment to blend with a more massive, wrap-around bumper. Tail lights, of vertical design, fit into the new pattern and hub caps are fashioned in keeping with the new body lines.

A massive chrome grille, bumper and head lamp assembly features a new, horizontal grille bar of wrap-around design which give a double-bumper effect. Over-all, the 1951 Monarch has a lower, longer appearance.

A choice of five solid enamel and four metallic enamel exterior colors is offered, as well as several two-tone combinations. There is also a wide field of selection in upholstery combinations.

In The World of Books

With Will R. Bird

98.6 DEGREES by Leon Z. Surliman, Smithers & Bonelli; 313 pages; \$3.75.

If you are a normal person your temperature should read 98.6° and the hero of this book wanted to be a normal person — just that and nothing more. The reader soon begins to realize that Danny, the hero, has a job on his hands. He contracted a tubercular condition and the story begins with the result of his examination, then goes along with him as he fares under varying treatments to the time he wins a final discharge as cured. This is not an ordinary book. The author, it seems to me, is not an ordinary person. Sickness may have been too hard with him. He dwells too much, and in a morbid manner, on details about his ailment.

In fact there are not enough other people in his chapters. He is like a patient who lies on his back staring at the ceiling and thinking entirely about himself and his own narrow little world. Some kind of ego is present, too, when he describes having a vision of Christ and seeing a resemblance to himself within the halo. The love affair Danny has with a girl at the sanatorium does little to relieve the weird atmosphere of the story, and it ends as the average reader would guess. Another girl, Wanda, who lived by her wits and without morals, is brought to life more vividly than any other character. There is enough good writing in the book to make one read it, and some of the descriptions are very well done but there is nothing cheerful or charming from beginning to end.

THE SPANISH GARDENER by A. J. Cronin; McClelland & Stewart; 263 pages; \$3.00.

Those who know Cronin's books, and they must number in the millions, will be rather surprised by the style of writing he has used. In fact, if Cronin genius had not used an unusual plot, and characters few would finish the book. It is as differently written from The Stars Look Down and The Keys of the Kingdom as one can imagine. The Consul is pictured as a poor specimen, a man with an inflated ego, a bore and more or less a hypocrite. His wife, a fine woman who would not trouble to fight his ways, had left him, as any sensible woman would do. But he had their son in his keeping and it is evident, from the first chapter, that the lad is very much like his mother.

The setting is Spain. The Consul and boy arrives and are established in comfortable quarters. By some quirk the assistant had employed as servants two crooks. The chauffeur is a mental criminal, and the cook is his mistress. But they are so smooth in their conduct that they fool the Consul and play to his ego. Then a gardener is engaged, and a young man who is an athlete and who has a healthy interest in children. He notes the loneliness and the indifferent health of the boy and gives him a fine friendship. The Consul, of course, cannot bear to have anyone friendly with his son, and vents his spite on the gardener in many ways. This suits the criminal who has revealed his real self to the boy but has threatened him so that the child dare not complain.

The story winds along smoothly

Girl Guide News



PROVINCIAL GIRL GUIDE EXECUTIVE MEETING

The Executive of the Provincial Girl Guide Association held their monthly meeting last Saturday afternoon when the hostess was Miss Iphigenie Arsenault.

Mrs. G. G. Hutcheson, Provincial Commissioner, presided, and the minutes of the previous meeting were read by Mrs. Whiteside.

In reporting for Camping, Miss Suzanne MacKinnon, Provincial Camp Adviser, stated that two successful camps had been held last summer. One was at Fernwood for the Prince County Guides at which there were in attendance 43 Guides and 8 staff. The King's and Queen's County camp was held at North Rustico and there were 63 Guides and a staff of 10 in attendance at it. The both camps were also successful in that many badges were awarded to the Guides after they passed the required tests for same.

Miss MacKinnon also reported that Miss Lucille MacQuaid had attended a camp in Florida last summer at which she was a Camp Counsellor, and an interesting report of same will be given at the Provincial semi-annual meeting on November 15 by Miss MacQuaid. She also announced that there is to be a National Camp held for ten days in July, 1952, near Ottawa. Approximately 1,000 Guides will be in attendance at it including Lone Guides.

Mrs. Alan MacMillan announced that the tentative date for the Guide-Scouter dance at the Charlottetown Hotel is Friday, November 24.

Mrs. L. E. Prowse was enrolled as a Guide, and then installed as Deputy Provincial Commissioner. A new member of the Provincial Executive, Mrs. J. E. Gauthier of North Rustico, was welcomed as were other representatives attending from Summerside, Southport, etc.

Miss Lillian Duchemin, Provincial Public Relations Commissioner, outlined the plans for the reception of the Scroll of Friendship and Log Book which the Girl Guides of Great Britain presented to the Guides of Canada, namely—Monday, November 13 — arrival of Scroll and Log by M.C.A. plane. Public reception at airport of officials, Guides and Brownies, after which they will be transported by train under kind permission of Lt. Col. Allison Rogers, 40 City Hall.

Tuesday, November 14 — Scroll and Log Book on display at P. W. C. Auditorium, under kind permission of Hon. F. A. Large and Dr. Frank MacKinnon, from three to six p.m. Huge County Rally of all Guides and Brownies at P. W. C. Tuesday evening from 6.30 to 7.30 p.m. The public is cordially invited to inspect the gifts in the afternoon, and attend the Rally in the evening. No admission will be charged.

Wednesday, November 15 — Semi-annual meeting of Provincial Girl Guide Association will be held at Clover Club at 3 p.m. Mrs. Hutcheson will give a report of the Dominion annual meeting she attended last May. Miss Lucille MacQuaid will tell about the Girl Scout Camp held in Florida last summer at which she was a Counsellor. The Scroll and Log Book will be on display. At the conclusion of the meeting tea will be served. Again the public is not only cordially invited, but urged to attend same.

Thursday, November 16 — King's County Day for the Scroll and Log Book. Mrs. L. H. Poole, Division Commissioner, Montague, is in charge of arrangements for same, and they will be on display, as far as is now known, from 3 to 5 p.m. in the School at Montague. This display is open to the public, and it is hoped many from outlying districts will be able to see same.

Friday, November 17 — Prince County Day. Mrs. Reginald Holman, Division Commissioner, assisted by Miss Lucille MacQuaid, is busy on plans for the display of the Scroll and Log Book at the Summerside High School from 5 to 7 p.m. A Guide Rally will also be held, and the public is invited.

Saturday, November 18 — The Scroll and Log Book will leave Charlottetown about ten a.m. by jeep, for the airport from which point they will continue their trans-Canada journey.

At no time will there be any admission charged when the Scroll and Log Book are displayed, and it is hoped that all who possibly can, Guides, Brownies, parents, friends and those interested in the voluntary youth training program of Girl Guiding, will endeavour to see them when on display either in Montague, Summerside or Charlottetown.

The Provincial Commissioner announced that in view of the semi-annual meeting being held on November 15 there would not be another executive meeting until January. At the conclusion of the meeting dainty refreshments were served.

All CHARLOTTETOWN is taking to this FAMOUS COFFEE FLAVOR

Chase & Sanborn Coffee
SEAL BRAND ALL PURPOSE GRIND

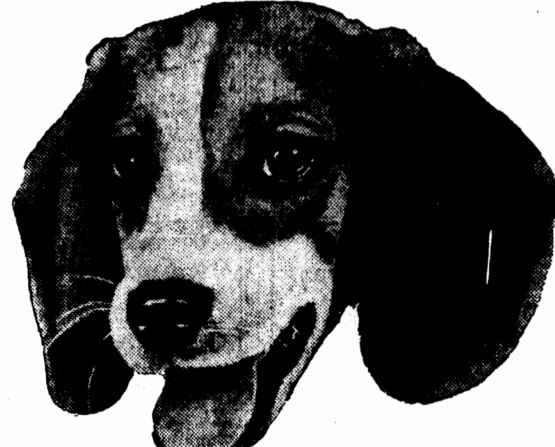
Chase & Sanborn
ALL THE FLAVOR YOUR CUP CAN HOLD!

What a Blend!
Yes, what a blend! So rich, so hearty, so fragrant. There's more of everything that's good in Chase & Sanborn. You get all the flavor your cup can hold!

What a Friend!
Friendly, too? Sure, it is. Good old Chase & Sanborn is the most companionable coffee in the world. No wonder it has been the favorite in discriminating homes for over 86 years!

What a Swell Cup of Coffee!
Really swell, no matter how you look at it. Grand to start the day... grand anytime. And it's a smart buy, too, because Chase & Sanborn gives you an extra bonus of coffee goodness!

What a blend... what a friend... what a swell cup of coffee! Ask your grocer for a pound of Chase & Sanborn today.



FEED SOLID GRO-PUP AND SAVE

GRO-PUP is a solid food—not 70% water like most canned dog foods. You add the water.

- 1 Yes, you can feed Gro-Pup and save—less than half the cost of most canned dog foods. Why? Because Gro-Pup is solid nourishment—through and through!
- 2 Yes, GRO-PUP contains every vitamin and mineral dogs are known to need. Easy to digest, ready in seconds. No wonder it's the food selected by so many famous breeders.
- 3 And dogs really go for Gro-Pup cubes. These hearty bite-size chunks require good chewing—help keep teeth clean, gums firm! In 2-lb. and 25-lb. sizes.



Also in small form. 2, 3, 25-lb. sizes

Made by Kellogg's in London, Ontario

Huge Power Dam Vital Factor In North Korea

By James D. White
Associated Press News Analyst

Why would a country to war over a power dam? Concern over the great Yalu River power dam on the Korean-Manchurian border is the reason given most often for the entry of North Korea.

More than a power dam is involved, of course, but this particular dam is the focus of the things that are writing the history of its setting.

Sihho Dam is the heart of one of the world's great electric power systems. It was built by the Japanese before the war and so hooked up and entwined with the economy of two countries that only destruction of the dam itself may ever untangle the ties the Japanese created.

About 250 miles to the North in Manchuria they built a higher but slightly-smaller dam at Hsiachong-man near Kirin. In Korea they already had several smaller dams.

A number of steam-powered plants existed or were built in the Manchuria. Over the Korean coal-rich central-bread-basket of mountains and across most of Manchuria marched the transmission lines from Wonsan and Chongjin on the East Korean coast, almost to the Gobi Desert, they carried energy to Moscow among a people still using wood-en-pole shares in some cases.

The impact of power as a source of light, communications and manufacturing potential upon such a human setting was correspondingly greater. Hands that could not write could throw a switch, or hold metal up to a whirling lathe, and there were more jobs.

This went on in Manchuria from Harbin in the north, down through Chanchun and the big industrial city of Mukden, and the iron

smelters and synthetic rubber and big southern port of Dairen.

In other words, if you weaken this great power grid by knocking its heart out at Sihho, you play hob with the lives of people.

So the loss of Sihho could make a lot of Manchurians sore at the government that allowed it to happen.

ST. CHARLES SCHOOL
Honor Roll for October.

Primary Department
Grade V — 1. Shirley Gallant.
Grade IV — 1. Susie Gorman, 2. Theresa Peters, 3. Freda Peters.
Grade III — 1. Hilary Gallant, 2. Gloria Peters, 3. Albert Clements.
Grade II — 1. Delores Peters, 2. Cyrus Jenkins, 3. Priscilla Doucette.
Grade I (a) — 1. Helen Gallant, 2. Elaine Jenkins.
Grade I (b) — 1. Bernice Peters, Terry Peters, 2. Cleo Peters, Dale Cahill, 3. Eddie Jenkins.
Grade I (c) — 1. Joe Doiron, Leonard Doucette, Teacher — Lucille Wood.

FOR SALE
CAR, TRUCKS and TRACTORS

NEW

1950 DODGE COACH, Heater, etc.
1950 One-Ton DODGE Express, Heater, etc.
Also good stock New Ferguson Tractors.

USED

1949 DESOTO CUSTOM CLUB COUPE, with Radio, Heater, Sunvisor, etc.
1947 DODGE CUSTOM SEDAN, Heater, etc.
1948 DODGE Special DeLuxe SEDAN, Heater, etc.
1947 DODGE CLUB COUPE, Heater, etc.
1940 CHEVROLET SEDAN, Heater.
1936 DODGE SEDAN, Heater.
1939 MERCURY SEDAN, Radio, Heater.
1937 FORD COACH, Heater.
1947 WILLYS JEEP
1941 1-2-Ton FARGO, Platform Racks, Heater.
1947 1-2-Ton FORD Panel, 4 Speed, Heater.
1946 3-Ton FORD, Platform and Racks.
1947 3-Ton FORD, Chassis and Cab.
1944 2-Ton FARGO, Platform and Racks.
Also One CHEVROLET Army Truck.

ALL UNITS WINTERIZED AND PRICED TO SELL.
REASONABLE TRADE-IN ALLOWANCE AND EASY TERMS ARRANGED.

JOHNSTON MOTORS
YOUR DODGE & DESOTO DEALER
MURRAY RIVER, P. E. I. PHONE 1-3

P. E. I. Federation Of Agriculture COUNTY ANNUAL MEETINGS

PRINCE COUNTY	KING'S COUNTY	QUEEN'S COUNTY
TUESDAY, NOVEMBER 14th VERDUN THEATRE O'LEARY	WEDNESDAY, NOVEMBER 15th MORELL HALL MORELL	THURSDAY, NOVEMBER 16th CAN. LEG. HALL Grafton St., Ch'town.

All Meetings at 1:30 P.M. Sharp.
Meetings open to all members.
District delegates eligible to vote.
Federation activities will be reviewed.
Future policies discussed.
Five new directors appointed in each County.
Farm Radio Forum discussed by Floyd Griesbach,
National Farm Radio Forum Secretary.
Report on Potato Marketing Board.
Have your District represented.

P. E. I. AND COUNTY FEDERATIONS OF AGRICULTURE

A good even money bet!

Players
NAVY CUT CIGARETTES MILD.

25 for 50¢ INCLUDING ALL TAXES

PREVENT FIRES

Plain and Cork Tip