

### Damage Figure \$15,000

Fire yesterday caused an estimated \$15,000 damage when it levelled the E.D. Reid Produce Ltd. potato warehouse in St. Charles.

The building, situated about seven miles west of Souris, was empty and was covered by insurance.

The alarm was turned in about 4 a.m. by George Doucette, warehouse foreman, who lives nearby. Souris Fire Department fought the blaze.

President E.D. Reid said yesterday plans will be made immediately for construction of a new building.

### Woman, 71 Is Injured

MONTAGUE — A 71-year-old woman is in hospital here suffering multiple fractures after a traffic mishap on Main Street Tuesday night.

Mrs. Florence Riley of Montague was struck by a car reportedly driven by Ray Machon of Montague. The accident occurred about 10:15.

In another accident, earlier in the evening, two cars collided near Brudenell. No one was injured but the cars each received about \$400 damage. Drivers of the cars were Dorothy Marie McHeron of Toronto, formerly of Montague, and George Osborne Warner of Montague.

The Warner car reportedly stopped to pick up a pedestrian when the accident occurred.

### Three Appear After Incident On King Street

Three youths appeared in city court before Magistrate A.J. Haslam, Q.C., yesterday on charges of loitering on King Street.

Sgt. Keith Wakelin, city police, told the magistrate the defendant had frequent complaints about noise and drunkenness in the area.

Barry Carr of Charlottetown was fined \$20 and costs or 20 days on the charge and warned to "stay off King Street."

The other youths charged, George McLaine, Ontario, and Edmund Somers, Brantford, pleaded not guilty to the charge and were remanded to Aug. 12 after the testimony of Sgt. Wakelin.

In traffic cases, Barry John MacDonald, Charlottetown, was fined \$20 and costs or 10 days for driving without due care, and attention, and Bernice Kelly, Mr. Stewart was fined \$5 or two days for driving the wrong way on a one-way street.

A charge against Jackie McPhail, Charlottetown, of a rare and control of a motor vehicle while intoxicated was withdrawn at the request of the crown.

### School Boards Will Discuss Joint Request

Representatives of Charlottetown and Summerside school boards meet here Aug. 18 to discuss the form of approach by the boards to the provincial government.

They will be seeking the best means of a joint request for financial aid to the two communities for the building of planned new high schools. Who the representatives of the boards will be is not known as yet, but it is assumed chairman of the Charlottetown board, Dr. R. Gordon Lea, will be one of the members from this city.

The local school board recently announced the start on a new building almost immediately to provide high school facilities in anticipation of the dropping of these classes at Prince of Wales College following the coming term.

### Wendall MacKay Temporarily Fills Manager's Spot

Wendall MacKay, manager of Island Development Company, will fill on a temporary basis the vacancy left by the resignation of Charlottetown Hotel manager Jan W. Grude.

Mr. MacKay said no permanent successor to Mr. Grude had been appointed.

Mr. Grude's resignation as manager of the division of tourism under the Island Development Company was accepted and confirmed by the company president, A.D. Margison, during a meeting with the Charlottetown staff.

Mr. Grude was presented with a painting, an island scene, by the hotel supervisory staff, who expressed their regrets to see him leave.

Mr. Grude and family will leave the province early in September. It is believed he intends to take a job in British Columbia.



# IT'S CRYSTAL CLEAR

## HOW MUCH YOU SAVE AT

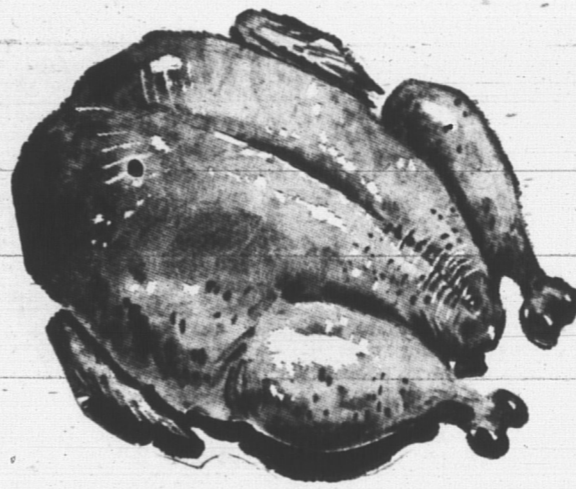
Special Prices Effective 'Til Closing Time Saturday Aug. 14th

Monarch Salad	Clover Farm in Tom. Sauce	New Crop! Radio Choice
<b>OIL</b>	<b>BEANS</b>	<b>PEAS</b>
16 OZ. BOT. <b>35<sup>c</sup></b>	6 20 OZ. TINS <b>1.00</b>	3 20 OZ. TINS <b>55<sup>c</sup></b>



GRADE "A" READY CLEANED — 3 to 4 Lb.

# FOWL 39<sup>c</sup> Lb.



HEINZ STRAINED OR JUNIOR

**BABY FOOD** 4 5 OZ. TINS **45<sup>c</sup>**

RED ROSE GAUZE

**TEA BAGS** 60's **89<sup>c</sup>**

NABISCO SHREDDED

**WHEAT** 18 OZ. PKG. **37<sup>c</sup>**

TROUT HALL ORANGE

**JUICE** 2 20 OZ. TINS **45<sup>c</sup>**

MONARCH QUICK

**WHIP** 2 2 OZ. PKGS. **29<sup>c</sup>**

CLOVER FARM RED CUP

**COFFEE** 1 LB. BAG **89<sup>c</sup>**

CHOICE ROUND

# STEAK 69<sup>c</sup> Lb.

MEATY RUMP

**ROAST** Lb. **63<sup>c</sup>** | **SWEET PICKLED Neck Ribs** 4 LBS. **59<sup>c</sup>**

MAPLE LEAF PICKLE & PIMENTO, MOCK CHICKEN OR

**Macaroni and Cheese Loaf** 6 OZ. PKG. **25<sup>c</sup>**

MAPLE LEAF

**BOLOGNA** By Piece **31<sup>c</sup>** Lb. Sliced **35<sup>c</sup>** Lb.

ANY TIME IS PANCAKE TIME	
MONARCH PANCAKE	BEE HIVE CORN
<b>MIX</b>	<b>SYRUP</b>
2 POUCH PKGS. <b>25<sup>c</sup></b>	2 LB. TIN <b>39<sup>c</sup></b>

CLOVER FARM	MARVEN'S
<b>APPLE JUICE</b>	<b>HOSTESS COOKIES</b>
6 20 OZ. TINS <b>1.00</b>	1 LB. PKG. <b>39<sup>c</sup></b>

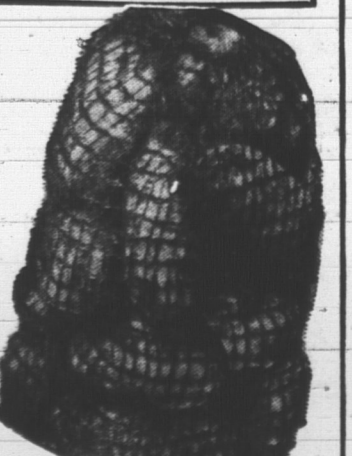
CLOVER FARM	CLOVER FARM TABLE
<b>TOMATOES</b> 2 20 OZ. TINS <b>55<sup>c</sup></b>	<b>SYRUP</b> 16 OZ. BOT. <b>37<sup>c</sup></b>
DIXIE <b>CARAMELS</b> Lb. <b>39<sup>c</sup></b>	BLUE RIBBON VANILLA <b>EXTRACT</b> 2 OZ. BOT. <b>29<sup>c</sup></b>
JOHNSON'S BABY <b>POWDER</b> 3 3/4 OZ. EXTRA TIN <b>39<sup>c</sup></b>	PEPSODENT <b>TOOTH PASTE</b> GIANT <b>59<sup>c</sup></b>

FROZEN FOODS	PERFECTION ICE CREAM QUART <b>59<sup>c</sup></b>	BIRD'S EYE ORANGE JUICE 6 OZ. TIN <b>27<sup>c</sup></b>
--------------	--	---

SOUTH AFRICAN NAVEL **ORANGES** 5 Lbs. **69<sup>c</sup>**

GOLDEN RIPE **BANANAS** Lb. **19<sup>c</sup>** | TENDER WAX **BEANS** Lb. **25<sup>c</sup>**

P.E.I. NEW **POTATOES** 5 Lbs. **33<sup>c</sup>**



Aylmer Sweet, Corn, Hamburg or Hot Dog <b>Relishes</b> 10 OZ. BOT. <b>27<sup>c</sup></b>	Barbecue Starter Esso <b>Varsol</b> 32 OZ. TIN <b>55<sup>c</sup></b>	Clover Farm Bread 'N' Butter <b>Pickles</b> 16 OZ. BOT. <b>29<sup>c</sup></b>
Colgate's Ajax <b>Detergent</b> KING SIZE <b>\$1.49</b>	Catelli's Cooked <b>Spaghetti</b> 2 20 OZ. TINS <b>43<sup>c</sup></b>	Black Diamond <b>Cheese Slices</b> 8 OZ. PKG. <b>35<sup>c</sup></b>