

# EN PASSANT

by James Martin  
and Mike Peters

# Mock Rules Governing the Game of Chess

This week for a bit of a change we have put in a bit of humor which we ran across in our researches. This is a set of mock rules governing the game of chess.

1. Never move any piece once until you have touched every other piece twice. Touch and move is a system adopted by some players to obtain a mean advantage when they fear they have a losing game.
2. If you have a piece "en prise", immediately put

another so. It may confuse your opponent.

3. Bang your pieces down when you move. It intimidates your opponent.

4. As an onlooker, make your comments audibly, and never hesitate to move pieces on the board. It will demonstrate the clarity of your thinking and the stupidity of the players, until you see a piece that you overlooked.

5. Never resign. There is always the chance that

your opponent may drop dead before he mates you.

6. Always give check if you can; it may be mate.

Anyhow, it is better to have checked and lost than never to have checked at all.

7. Stick to one opening, even if it is bad and you don't know it. One day you will find somebody who knows it less.

8. Castle, take "en passant", promote Pawns to minor pieces whenever you can. It helps to create

the impression that you have a deeper knowledge of the game than you really have.

9. Never think before you move. "Move and think afterwards" is more usual. You can always retract your move, but your opponent must never be allowed to retract his.

10. Be prodigal with your Pawns. They only hamper your pieces and those of your opponent.

11. When you stumble on a win, at once declare noisily that you had played for it. You may not convince your opponent, but it is comforting.



## They're going to change the way you think about contraception.



Because our condoms are designed to do more than just prevent you from contributing to the population explosion. They're designed to add to your enjoyment. While all Searle Condoms are dry-lubricated for greater sensitivity and have a reservoir tip, each has its own special difference.

STIMULA® have multiple ribbing on the shaft...a feature designed for a man...with a woman in mind. Adds to the pleasure for both partners.

PRIME® combine traditional shape with economy. CONTURE® are shaped. To fit you. Which means they feel better and stay put.

Whichever you choose, we believe they're going to change the way you think about contraception.

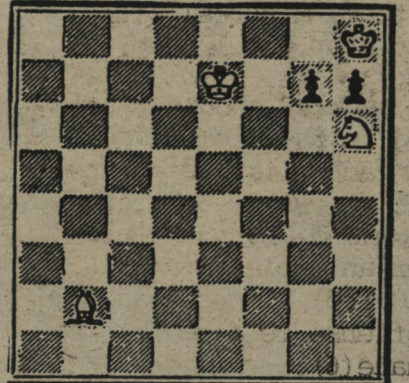
### Today's Condom.

Available on display in drugstores or ask for them by name. In packs of 3's, 12's and the new 36's.

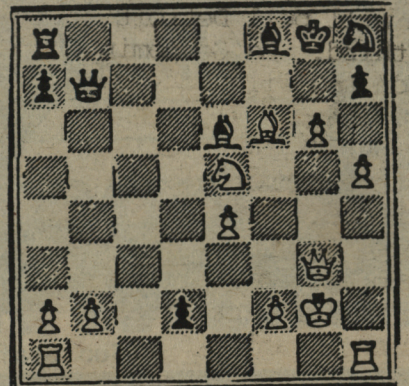
Who knows more about contraception than Searle  
**SEARLE** Searle Pharmaceuticals  
400 Iroquois Shore Road  
Oakville, Ontario L6H 1M5

### PROBLEMS

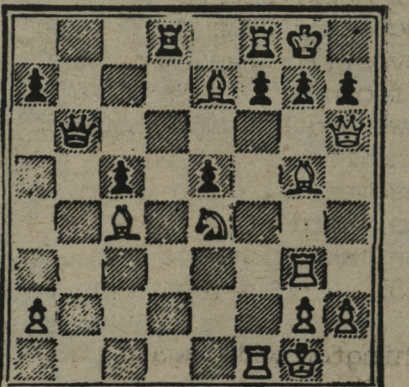
#1



#2



#3



#4

