



HAMPTON

Congratulations are being extended to Mr. and Mrs. John Hall Lea, formerly of Tryon, and for many years residents of Los Angeles, California, who recently celebrated their 75th wedding anniversary at their apartments among their friends in this beautiful city. They were born here in 1882 and have many relatives on the island, including grandchildren, great-grandchildren, and great-great-grandchildren.

Sometimes we hear people complain about adverse weather conditions regarding the progress of harvesting, but we wonder just what effect the weather conditions reported in the Peace River District would have here, where recent heavy snow storms have completely covered the harvest fields out there and sunshine is being intensely awaited before the grain and wheat may be safely harvested. Here, as we drive through highways and byways shaded with abundance of trees bearing a magnificent foliage of leaves of orange and purple and gold, and observe the reaping and ingathering of our abundant harvest, may we not join with many of our friends who have returned to their homeland after years of services rendered elsewhere, in the ex-

Peters
Grade I V. Valerie Poole 2. Pauline Sobey, 3. David Simmons.
Grade III I. Norma Hogg, Ruby Wood.
Grade II (A) Adele Marchbank 2. Daniel Rayner 3. Donna Hogg II (B) Michael Lauglin, Ray Taylor.
Grade I (A) 1. Carolyn Sobey 2. Brian Taylor 3. Shirley MacLean.
I (B) 1. Brian MacLinnis 2. James Stewart 3. Deborah Peterson.
I (C) Sarah Blanchard.

breaker, a complex piece of apparatus which will guard St. Lawrence generators, transformers and transmission lines against destructive power surges such as might be caused by lightning, and will restore power breaks before the human eye can notice them. The particular feature of this circuit breaker is that it is used a blast of high-pressure air to control short-circuits, instead of oil. Nearly everything about the St. Lawrence equipment is huge. Each generator is 85 feet in diameter, weighs 446 tons, and will require 16 freight cars for shipping; each will be housed in a concrete enclosure the size of a four-storey building with 2,300 feet of floor space, each of 60,000 kilowatt capacity—will have capacity of 75,000 horsepower. The 86,000 kilowatt transformers each stand 30 feet high and weigh more than 100 tons. They will boost power current from 12,000 volts at which it will be generated, to 230,000 volts for transmission over Ontario's hydro system.

TRAVELLER'S REST
The following is the list of water Traveller's Rest School for the month of October.
Grade IX Vivian Pulman
Grade VIII I. Rena Wood 2. Smith Gunning 3. Walter Schumann
Grade VII 1. Robert Taylor 2. Walter Young 3. Carl Montgomery.
Grade VI 1. Marcia Simons 2. Sandra Taylor 3. Milton Montgomery.
Grade V 1. Garth Marchbank 2. Dianne Lauglin 3. Shirley

WINS PHOTO PRIZE
This photo by Osborne Cox of Toronto won first prize in its class in the 1937 Newspaper Photo Snapshots awards in Washington. There were over 35,000 entries from Canada, the U.S. and the Hawaiian Islands. The photo was snapped in the zoo.

Show Electrical Equipment Connected With Seaway

By FORBES RHUDE
Lawrence Press Business Editor
Most of us had seen at various times the works of the St. Lawrence Power and Seaway project for earth moving, the river diversions, the town shifting and the placing of the lake-to-lake.
Now we are seeing what all these things are about.
For, significant though the St. Lawrence topographical changes are, they have, so far as their power phase is concerned, one simple purpose.
That purpose is to create and control a body of water which will operate generators for the making of electrical power.
Now, before us, stretching far along factory floors, the generators and their associated equipment were being built.
SHOW EQUIPMENT
Now was part of a show put on at their Hamilton plant by Canadian Re-frigeration Co. Ltd. for news-paper men, Ontario government and hydro officials, and Hamilton municipal, professional and civic leaders.
What we saw on construction were two of the eight vertical water-wheel generators Westinghouse will build and which will furnish half the power for the Canadian section of the St. Lawrence project; also three of the 10 transformers and various associated equipment to be built by Westinghouse. Pointing to one group of three nine-foot-high pieces of equipment our guide said:
"That is entirely a Canadian development."
MR. INSTEAD OF OIL
The development in question is called a jetair power circuit

The Guardian Page 11
Thurs., Nov. 14, 1937
The guest speaker here, His Majesty King George VI, was accompanied by Mrs. MacLennan and Mrs. Clark Capwell. The address was closely heard, and both Trinity Male Quartet, Assiniboia, following and solos by Mr. Thomas Hall, were greatly enjoyed. The combined Chorus, with Mrs. Allison Carwell as a daughter of the late Mr. W. A. MacQuarrie and the singing of the Hymns suitable adapted for this service. A very large audience was present to hear and enjoy the Sab-United Church on October 6 with both School Rally Service at 8:00 good attendance. Rev. A. F. Shaw on Sunday evening, Octo-

WEATHERBY'S

ANNIVERSARY SALE continues all this week. Here are a few of the many items on sale the rest are all marked in our store.

- SUGAR, 10 lbs. . . . 1.00
- BUTTER, 2 lbs. . . . 1.29
- MOLASSES, 2 qts. . . . 69c
- TEA, lb. 75c
- SHORTENING, 2 lbs. . . 49c
- SPICED BEEF, tin . . . 29c
- Tomato JUICE, 2 tins 29c
- ROAST BEEF, lb. . . . 39c
- FOWL, lb. 35c
- STEW MEAT, 2 lbs. . . 59c
- PORK CHOPS, lb. . . 65c



6 tins 89c
25's 1.69
HEINZ Tomato or Vegetable SOUPS 5 Tins—69c

- ICING SUGAR, 2 pkgs. . . . 29c
- TUNA, 2 tins 39c
- LIBBY'S PIE CRUST, 2 pkgs. . . . 63c
- TISSUE, 6 rolls 49c
- PEAS, 20 oz.—6 tins . . . 1.00
- JAVEX, 1/2 gal. 49c
- LARGE CORNED MACKEREL, ea. 29c
- COD FILLETS, lb. 29c

EXTRA SPECIAL FOR THE LADIES
6 Steak Knives, reg. 2.98 value for only 1.49 with each 5.00 purchase.
CORNER DOUGLAS AND UPPER QUEEN STS. DIAL 3644

Under the Chairmanship of Mr. MacFadyen, and Mrs. MacFadyen as organist, each pupil carried out his or her part in a very creditable manner. Many favorable expressions were made with regard to the diction of expression in singing or reading while carrying out their assignments.

TWIN SETS

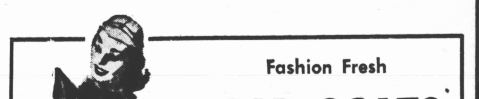
Classic style cardigan. Fully fashioned. Long sleeves, ribbed, backed button band, matching buttons. Eight smart Fall colors—Devon Blue, Zircon, Crayon Green, Navy, Black, Reize, Yellow and Racing Red. 100% pure Romney wool, shrink resistant. Sizes 34 to 40. Short-sleeved pullover to match.

- Cardigan . . . 9.98
- Pullover 6.98

Reversible SKIRTS

The "In and Out", completely reversible. Stitched on both sides, permanent pleats, hand-blocked, 100% wool materials in Radiant Red, Spruce Green, Harvest Gold, Canadian Sunset, Pastel Blue and Dress Heather.

25.00
Sizes 9 to 17



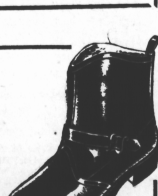
HOLMAN'S OF PEI

COWBOY BOOTS

... for little ranchers!

Every little boy will be thrilled to the tips of his toes in owning a pair of these "Cowboy" boots! Made of brown leather, with white star trim. Side straps for easy pull-on. Neoflex sole and rubber heel. Sizes 8 to 13. Modestly priced at . . .

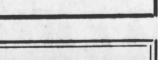
4.98 PR.



BOYS' ENGINEER BOOTS

Little trainmen will be proud to wear these black leather "Engineer" boots, fitted with instep-strap and side buckle. Rubber heel and sole. Sizes 8 to 13. A splendidly practical boot for this time of year. Priced at only . . .

4.98 PR.



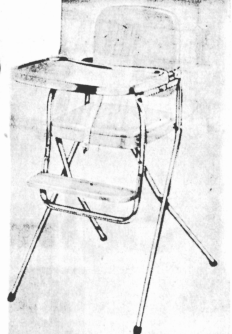
HOLMAN'S OF PEI

High Chairs

The ultimate in high chair styling is found in this folding-type chair. Chromium-plated legs, stainless steel tray. Red, Yellow, Charcoal, Grey or Pink upholstery. Folds flat with tray and footrest removed. 7 1/2" fully assembled. Thoroughly safety-tested. Made by "Crown" masters in the juvenile furniture field.

24.95

● OTHERS FROM 7.98



Kiddies' Rocking Chairs

Make your Christmas selection of "her" little rocking chair at Holman's. See them in lovely natural birch finish, at prices to fit your budget.

3.98

Play Pens

For the VERY small—how about a "play-yard"? Available in either square or rectangular shapes . . .

10.95

Kiddies' TV CHAIRS

A real Christmas special in this TV chair with wrought-iron frame and molded plastic seat in Black, White or Red. Special, while they last.

Reg. 7.98
4.99

TV Chair And Table Unit

New and different for the "Santa Claus" set. Black tubular frame with upholstered seat and back. Tray features 11 many characters. Bound to thrill and amuse the small fry.

9.98

STROLLERS

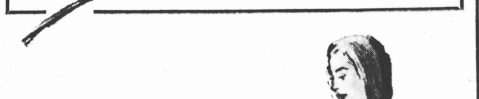
Strollers and convertibles are in full stock at both Holman stores. Make your Christmas selection early.

9.98

Fashion Fresh CAR COATS

The increasingly popular car coat—made of water-repellent cotton poplin in Reize, Alpaca, ple collar, storm cuffs, quilted lining, and slash pockets. A fine product of Sutcraft, Inc. Sizes 12, 14 and 16.

19.95



Striped 'Terylene' BLOUSES

Smart short-sleeved blouses of striped Terylene in Light Blue, White and Pink. Small collar with detachable jabot. "Nagley" by Blousecraft, Inc. Sizes 12-14-16-18.

5.98

All Wool SLACKS

Smartly tailored slacks of all wool. In Brown and Charcoal. Tapered leg for trimness. Self-belt, two side pockets. Sizes 10 to 18.

10.95



HOLMAN'S SHOE DEPT. . . . Both Stores

HOLMAN'S FURNITURE . . Both Stores

HOLMAN'S LADIES' WEAR . . Both Stores