

# Tuesday Event To Mark School's Official Opening

After actual use extending into the third month, Birchwood High School is to open its doors officially on Tuesday afternoon, with the placing of the cornerstone by T. E. McNutt, former secretary of the Charlottetown School Board for 33 years.

Other dignitaries scheduled to attend include His Honour, Lieutenant-Governor F. Walter Hyndman and representative of the premier and mayor, both of whom will be absent from the city tomorrow.

The new high school is a three-story brick structure containing 25 classrooms. Although two of three of these classrooms have not yet been put into use, the principal, L. F. MacDonald, has indicated that the full facilities will be employed next term starting in September, with upwards of 700 pupils filling the school to its operating capacities.

Electric ranges and drawers, cupboards and matched sets of tins providing all needed accessories. In the sewing department five electric machines are kept on the go. Each student has her own separate drawer for storing work. In the weaving department, six looms are used as the girls weave their own material for dresses, scarves or doilies.

**SEATS FOR 1,000**

The cadet area includes a soundproof rifle range where three boys at a time can take their turn and a store room for uniforms and rifles. The combined gymnasium-auditorium seats more than 1,000 for stage performances and 200 for athletic programs, when fans are restricted to the bleachers.

Athletic facilities are available for most of the indoor sports including gear for basketball and volleyball. Along with gymnastic equipment.

The spacious library is expected to be ready for use by next September. In addition to the kitchen in the home economics department, two smaller kitchens are situated just off the gymnasium and library, to be used for various functions held in them.

**WORK ON GROUNDS**

The general contractors, County Construction Company of Charlottetown are at present completing the landscaping around the school and the city is completing the construction of a sidewalk along the Longworth Avenue side. The paving of the school yard is expected to be completed early in the fall.

Sub-contractors for the job include several Halifax firms. Power Brothers looked after the plumbing and heating; the painting contract went to Parker Brothers; ceilings to Dominion Sound; sprinkling system to Nova Scotia Sprinkling; terrazzo floors in the washrooms to Nova Scotia Tile and Terazzo and plastering to Maritime Asphalt of Summerside while Burke Electric of Charlottetown had the wiring contract.

## May Bring Power To N.S. From Labrador

HALIFAX (CP) — The Nova Scotia Light and Power Company is studying prospects for bringing hydro power from the Hamilton River in Labrador to Nova Scotia.

General Manager A. R. Harrington told the company's annual meeting of the proposal here Wednesday.

He said the problem of cost remains to be solved but there have been interesting suggestions from the British Newfoundland Development Company, which has large holdings in the area.

Grand Falls on the Hamilton River are considered one of the

greatest potential sources of hydro power in the world. Mr. Harrington said all possible sources of electric power are under study but atomic energy is still too costly.

He called for use of federal subventions to bring the cost of coal in line with oil for steam-generated electricity.

"This would assure a coal market for local mines and any

benefit in reduced cost could be passed to power customers by fuel escalator clauses in our rates," Mr. Harrington said.

Negotiations were reported going ahead for the connection of Nova Scotia and New Brunswick power systems. Nova Scotia Light and Power Company, the Nova Scotia Power Commission and the New Brunswick Electric Power Commission would co-operate in

building a 138,000-volt transmission line between Halifax and Moncton.

Nova Scotia Light and Power plans to open a 100,000 kilowatt steam-powered generating plant at Dartmouth, N.S., by 1963. New hydro plants are proposed in the Annapolis Valley.

**CHRISTEN SHIP**

PORT WELLS, Ont. (CP) — The Frank A. Sherman, new 681-

foot flagship of Upper Lakes and St. Lawrence Transportation Company Limited, was christened and commissioned Saturday. The ship becomes the third largest Canadian bulk carrier on the Great Lakes and the St. Lawrence River.

**OFFICIAL OPENING**  
**BIRCHWOOD HIGH SCHOOL**  
CHARLOTTETOWN

The public is cordially invited to attend the laying of the corner-stone and official opening of Birchwood High School on Tuesday, June 3rd at 3 o'clock.

R. G. LEA, M.D., C.M., CHAIRMAN,  
Board of School Trustees.

**WE EXTEND**  
**CONGRATULATIONS**

To  
The Board of School Trustees  
and the  
**GENERAL CONTRACTOR**  
County Construction Co. Ltd.

on the  
**OFFICIAL OPENING**  
of  
Birchwood High School

**CHANDLER BROS.**  
Building Specialties  
DIAL 6557 127  
CHARLOTTETOWN P.E.I.

**GLAZING by**  
**CARSON & BIRT**

**CONGRATULATIONS**

to the administrators of  
Birchwood High School  
on their opening occasion. We are  
honoured to have participated.

**CARSON & BIRT**  
PLATE GLASS  
67 King Street Dial 8043

**HARDWARE**  
Supplied By  
**THE ROGERS HARDWARE**  
**CO. LIMITED**

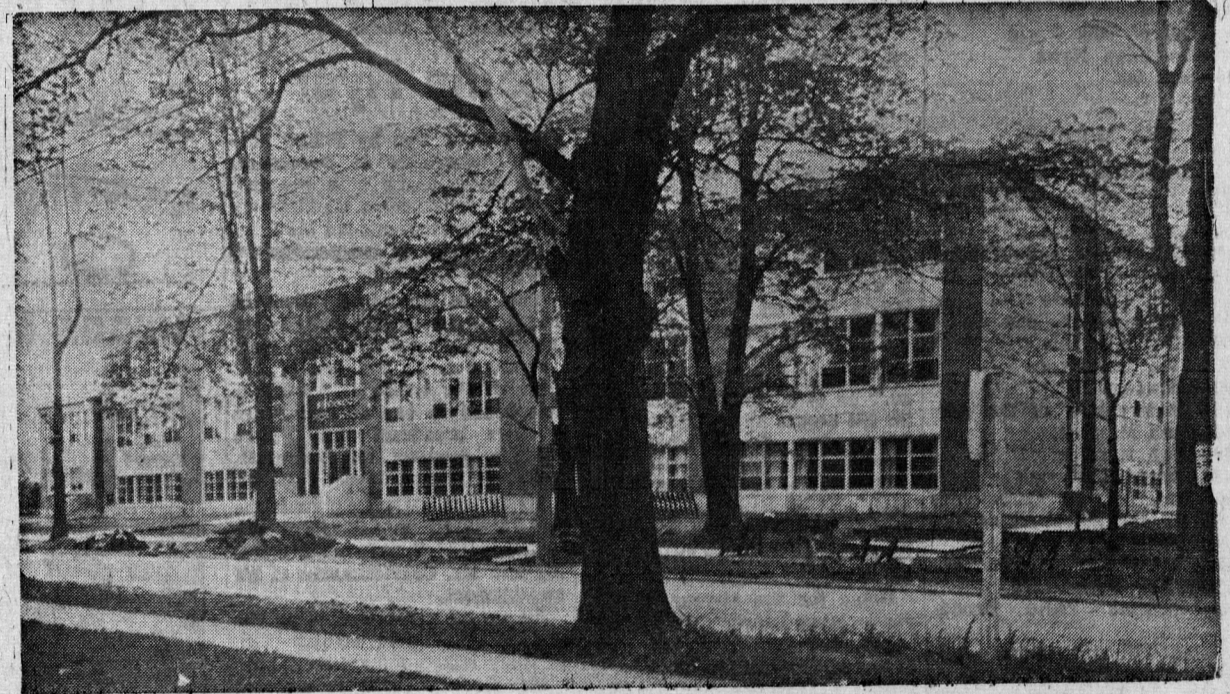
We are proud that Rogers Hardware was selected for the beautifully appointed new High School. Our congratulations to the citizens of Charlottetown on the official opening of your new public school.

"IF IT'S HARDWARE . . . WE HAVE IT"

**THE ROGERS HARDWARE CO. LTD.**  
CHARLOTTETOWN, P.E.I.

**ANOTHER UP-TO-DATE SCHOOL . . . . .**  
**FOR CHARLOTTETOWN**

**THE RESULT OF:**  
**Industry . . . Integrity and Enterprise**



**A SOLID ACHIEVEMENT BY**  
**THE CITIZENS**  
**WHO BUILD FOR TOMORROW!**

The congratulations of the General Contractors must go to the Board of School Trustees for their foresight in the construction of Birchwood High School, and to the Architectural firm of Downie, Baker and Ahern for their wise and fundamental planning of the completed building.

Another Example of Modern Construction by  
**COUNTY CONSTRUCTION**  
CO. LIMITED  
CHARLOTTETOWN P. E. I.

# The City of Charlottetown

TENDERS

## CONGRATULATIONS

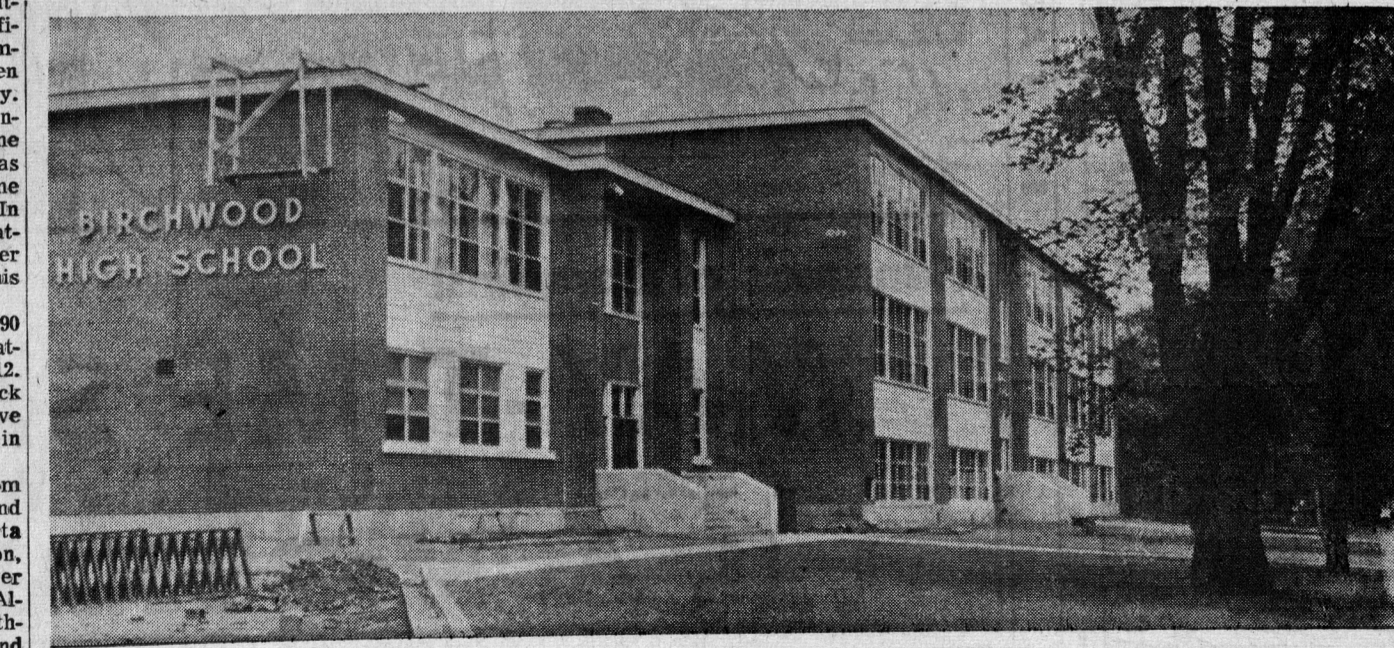
TO ITS

### BOARD OF SCHOOL TRUSTEES

AND

### GRATEFULLY ACKNOWLEDGES

THIS FORWARD STEP IN EDUCATION HERE



**"NEW BIRCHWOOD HIGH SCHOOL"**

With the opening of Birchwood High School, Charlottetown has taken yet another forward step in the field of education . . . an important step for the youth of the City . . . and, indeed, for the future of the Province as a whole. The matter of providing education for the youth of today is the responsibility of every citizen . . . and in this respect Charlottetown has demonstrated, once again its faith and confidence in the younger generation. The future of Canada rests on the shoulders of our youth . . . any thing that can be done now to further their educational facilities is vital and important . . . and Birchwood High School is one of the important steps in this educational development program.

Edwin C. Johnstone  
Mayor

J. ARTHUR GORMLEY  
A. WALTHEN GAUDE  
FRANK O'NEILL  
A. JAMES HASLAM  
J. EDMOND ARSENAULT

COUNCILLORS

EARLE C. BAKER  
GERALD R. FOSTER  
HARRY E. HYNDMAN  
F. WILLIAM BOYLES  
ELMER MacRAE

**MODERN FEATURES**

The school is equipped with all modern features, including sections devoted to industrial arts, home economics cadet training area and gymnasium. Along with these are teachers' rooms, administrative offices and a health clinic.

Classrooms are plastered and painted in pastel shades. Floors are tiled while ceilings are of acoustic tile. Each room is equipped with two slates measuring eight by sixteen feet. The general science room provides a wide range of special equipment.

The industrial arts department has complete working facilities in woodworking and drafting and provisions have been made for expansion to include a sheet metal department. In the wood-working section are the basic mechanized tools including hand saws, drills, sandstones and several others.

**HOME ECONOMICS**

One of the most modern sections is the home economics cooking department, where facilities are available for 16 girls to advance their cooking skills at one time. There are four elec-

## Most Grain Prospects Good

By THE CANADIAN PRESS

A dry spring followed above-normal winter precipitation on the prairie grain-growing areas, but all regions except southeast Saskatchewan and eastern Manitoba show above-normal totals for the nine months ended April 30.

Statistics prepared for The Canadian Press by the meteorological division of the department of transport show that the excess ranged from 39 per cent in the Peace River region of Alberta to five per cent in southwest Saskatchewan.

This spring, the lack of precipitation has been most marked in southeast Saskatchewan and eastern Manitoba. Below-normal precipitation in March and April has been followed by continued dry weather in May. In southeast Saskatchewan there was a deficit of 24 per cent below normal at the end of April and in eastern Manitoba the deficit was 10 per cent.

For Alberta as a whole the excess was 26 per cent at the end of April, compared with an excess of 32 per cent at the end of February.

For all Saskatchewan, the excess was reduced from five per cent at the end of February to one per cent at the end of April.

The entire province of Manitoba was reduced to normal figures at the end of April, compared with an excess of seven per cent at the end of February.

The official figures do not include the month of May, but the report notes that rainfall was everywhere below normal in the first two weeks of the month. In Manitoba and southeast Saskatchewan it was less than a quarter of normal precipitation for this period.

Temperatures in excess of 90 degrees were reported in Saskatchewan and Manitoba on May 12. Above-normal temperatures, lack of rainfall and high winds have already produced dust storms in parts of Manitoba.

For the full nine months from the end of last July to the end of April, all regions of Alberta show an excess of precipitation, 39 per cent in the Peace River and 35 per cent in central Alberta; 17 per cent in the north-central part of the province and 12 per cent in the south.

Northwest Saskatchewan for the full period had an excess of 17 per cent; in the northeast it was seven per cent above normal and in the southwest five per cent, compared with the deficit of 24 per cent in the southeast.

Manitoba's all-province normal for the nine months comes from an excess of 10 per cent in the western part, and a deficit of 10 per cent in the eastern part.

**N.S. Temperance Worker Dies**

HALIFAX (CP) — E.R. Nickerson, prominent temperance worker and former member of the Nova Scotia Legislature, died here Wednesday. He was 82.

Mr. Nickerson held executive offices in national and provincial divisions during his 68 years as a member of the order of the Sons of Temperance. He was national head of the order from 1922 to 1924.

From 1925 to 1928 he was a Conservative member of the Legislature for Shelburne. He was sergeant-at-arms in the House from 1928 to 1933.