

RURAL

Be at Saint Dunstan's Rink on Tuesday evening February 8th, when Lt. Gov. W. J. MacDonald, Rev. Father George MacDonald, Rev. Ross Howard, Mr. David Boswell and Brig. W. W. Reid officially open the Rural Minor Hockey program . . .

MINOR HOCKEY NIGHT

TUESDAY, FEBRUARY 8th AT 6:45 p.m.

All Children Registered In Rural Minor Hockey Will Participate.

S
U
P
P
O
R
T
M
I
N
O
R
H
O
C
K
E
Y

S
U
P
P
O
R
T
M
I
N
O
R
H
O
C
K
E
Y



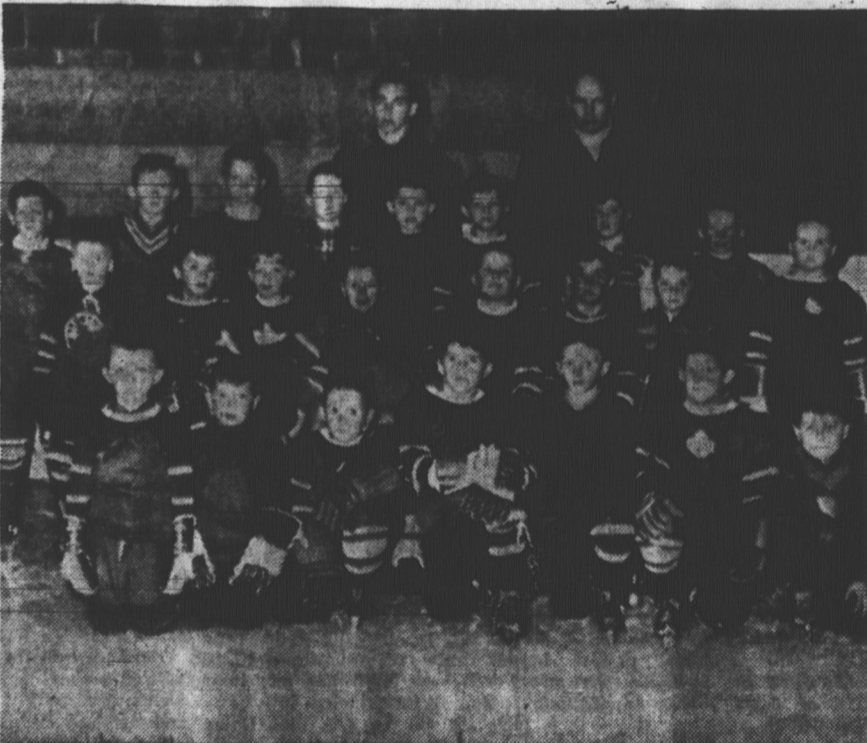
COACH KEN MacDONALD AND HIS PEE-WEE HAWKS



COACH BUD CONSTABLE AND HIS BANTAM BRUINS



COACH RON McINNIS AND HIS BANTAM WINGS



CLIPPERS & ACES COACHES CARMODY & MURNAGHAN PAPERWEIGHT



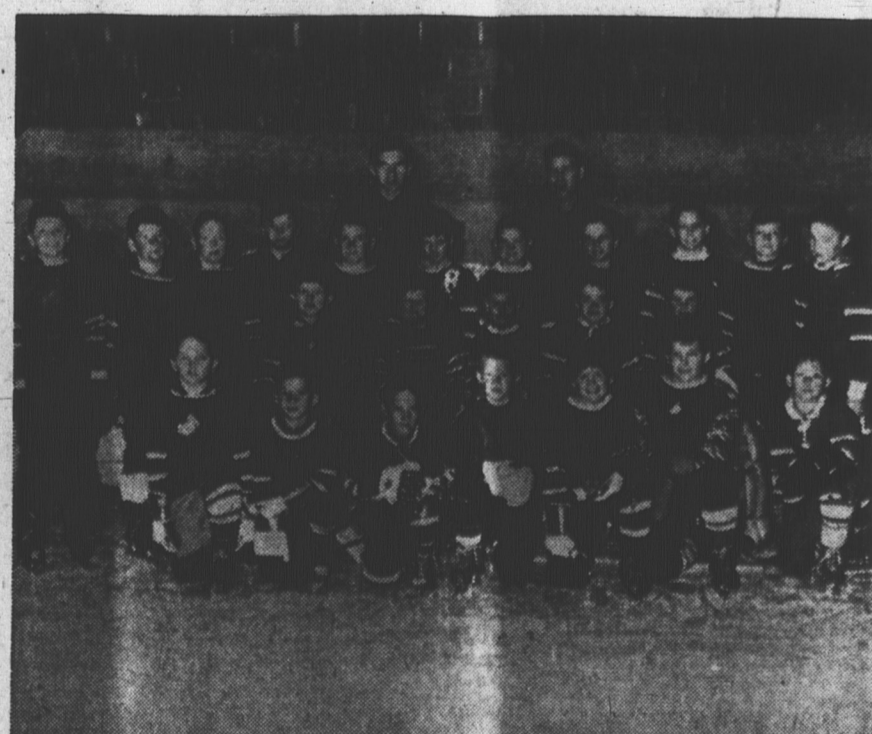
BISONS & BARONS COACHES STEELE & WALKER PAPERWEIGHT



COACH WILLIS HENNESSEY AND HIS PEE-WEE RANGERS



SEALS & FLYERS COACHES SHEPHERD & JOHNSON PAPERWEIGHT



BLADES & CANUCKS COACHES MULLIN & MacCARVILLE PAPERWEIGHT

This message is published in support of rural minor hockey by the following firms:

Royal Canadian Legion
Ch'town Branch No. 1
Charlottetown, P.E.I.

Sunny Isle Farms Ltd.
"Farm Machinery"
Grafton St. East—Dial 4-7389

Ellis Bros.
161 St. Peters Rd.—Dial 2-1201

J & T Morris Ltd.
75 Water St.—Dial 4-6545

Kinlock Farm
Kinlock—Dial 4-7866

King's Building Materials
Southport—Dial 4-4830

Robinson Supplies Ltd.
187 Queen St.—Dial 4-8561

Adella's Millinery
100 Queen St.—Dial 4-8114

Ronald MacLean
Electrical Contractor
169 Belvedere Ave.—Dial 4-5447

Royalty Oaks Drive-In
St. Peters Rd.—Dial 2-2623

Vesey's Seeds
York—Dial 4-8844

MacKarris' Clover Farm
Southport—Dial 4-3240

Southport Esso
Southport—Dial 4-4136

LePage Shoe Co. Ltd.
133 Grafton St.—Dial 4-4748

Buster's Irving Service Station
Grafton St. East—Dial 4-3621

Enterprise Bakery
205 Grafton St.—Dial 4-8747

Vere Beck & Son Ltd.
217 Elm Avenue—Dial 4-6935

Howard's Transfer Ltd.
Cornwall—Dial 4-7505

Boswell's Irving Service Station
Mt. Albion Dial 2-3163

SUPPORT MINOR HOCKEY