

DIVERSITY IS KEYNOTE OF ISLAND FARMING



C. M. ARSENAULT FARM FEATURES DISTRICT SPECIALTY, SHEEP



TYPICAL SMALL-CREAMERY IS OWNED BY FARMERS IT SERVES

Sheep Given Key Role

Sheep raising while not prominent in Prince Edward Island's agricultural economy is carried on rather extensively in certain areas of the Province. One such area where the farm flock has consistently remained is the Egmont Bay-Abrams Village parish which is predominantly settled by French Acadians. "We feel we would not be farming at all if we did not have a

flock of sheep", said Charles M. Arsenault, 73 year old farmer who is living on the homestead where he was born and where eleven children were raised. The elderly couple are now alone but 24 young lambs born this past spring ensures that the farm flock will not go out of existence.

Small Rural Creameries Continue Long Tradition

North Wiltshire Dairying Company which has been serving the farmers of the surrounding country for 62 years is typical of the many rural butter factories scattered throughout the province. The factory operated from 1897 to 1924 as a cheese factory when it was changed to a butter factory. During this long history the products of the North Wiltshire factory have found favour in many Island outlets and millions of pounds of butter have been exported from the province. The present manager of the factory, G. Bruce Noy has worked in the plant for 46 years and the head butter maker, Bertram Lase has a long period of service. The President of the Company, Mr. Edwin Edwards has been associated in that position for 44 years. Nelson Hatherley is secretary and assistant butter maker.

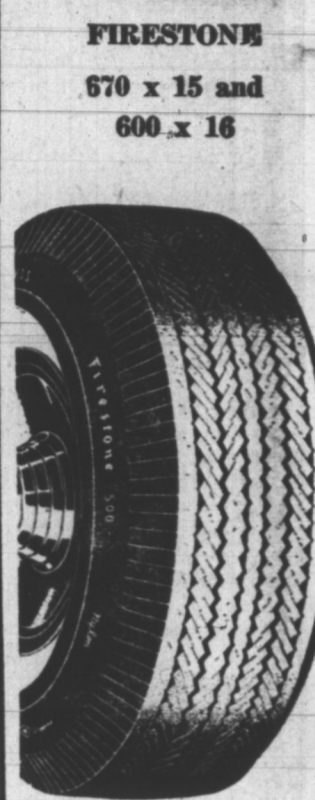
Owned by the farmers themselves, the North Wiltshire Dairying Company has 150 shareholders. About 395 cream patrons from a 20 mile radius ship their cream to the factory by seven different haulers. To show what the factory means to the economy of the community sales for last year from 575,508 lbs of butter amounted to \$375,770. Shareholders in addition to their net returns received substantial dividends. The factory employs five haulers.

PROUD OF PART
Mr. Arsenault is proud of the fact that he took a prominent part in the establishment of one of the first sheep clubs organized on the Island. It is called the Abram's Village Cheviot Club and its main objective is to improve the quality of market lambs by establishing in the community a breed of sheep that will produce a lamb, which by conformation of carcass, weight and quality will reach the highest standard grade on the market. The club also encourages good care and feeding of the lambs so

that they may be properly finished for the market. The club has made rail grading compulsory for its members and through this method of marketing have found that returns have been much more satisfactory than those received from live weight sales. The rules laid down by the club are right and any member who fails to abide by them may be asked by the executive to retire from membership. **EARLY HARVEST**
DERBY, England (CP)—Farmers in Derbyshire have begun the earliest corn harvest in living memory, says the county agricultural committee. Winter oats have already been cut and stored on several farms. **STOCK FROM SCOTLAND**
One of the steps taken by the club was to make available some North Country Cheviot stock from Scotland and Mr. Arsenault still has one of the older ewes from this importation. The veteran sheep breeder believes that sheep could become a more important part of the farm economy if farmers would take more care of their lambs. He feels that even a small proportion of the care given to other phases of breeding, if directed to the sheep flock, would pay good dividends. The Abrams Village Club sell all their wool through the Prince Edward Island Wool Growers Association.

Here's WHY FARMERS CHOOSE... The WHITE HUNTER For Their Tire NEEDS Read This!

REDDIN'S Drugstore
The Best Place To Buy Your VETERINARY SUPPLIES
Here Are 3 Good Reasons
We study what the farmer needs on his farm. A DRUGGIST who understands the needs of the farmer.
Lowest possible prices for the highest quality merchandise.
REDDIN'S DRUG STORE
For All Your Veterinary Needs
132 Richmond St. Dial 4386 or 4515



4 TIRES \$50.00 PLUS TRADE-INS

NEW! Firestone TRACTOR TIRES with revolutionary RUBBER COMPOUNDS that RESIST WEATHER CHECKING ... give you years of EXTRA SERVICE Firestone DEEP TREAD



See these great, new tires today at... FIRESTONE HOME & AUTO CO. LTD. 181 Great George St. Charlottetown 24 Central St., Summerside

Farm Products Made For You By Imperial Oil Limited...
Mr. Farmer!
Mr. C. R. Boehner invites you to visit his large and completely stocked jewellery store where you will find only unsurpassed styles and quality jewellery, gift selections and wedding supplies.
C. R. BOEHNER Jewellery — Gift Shop

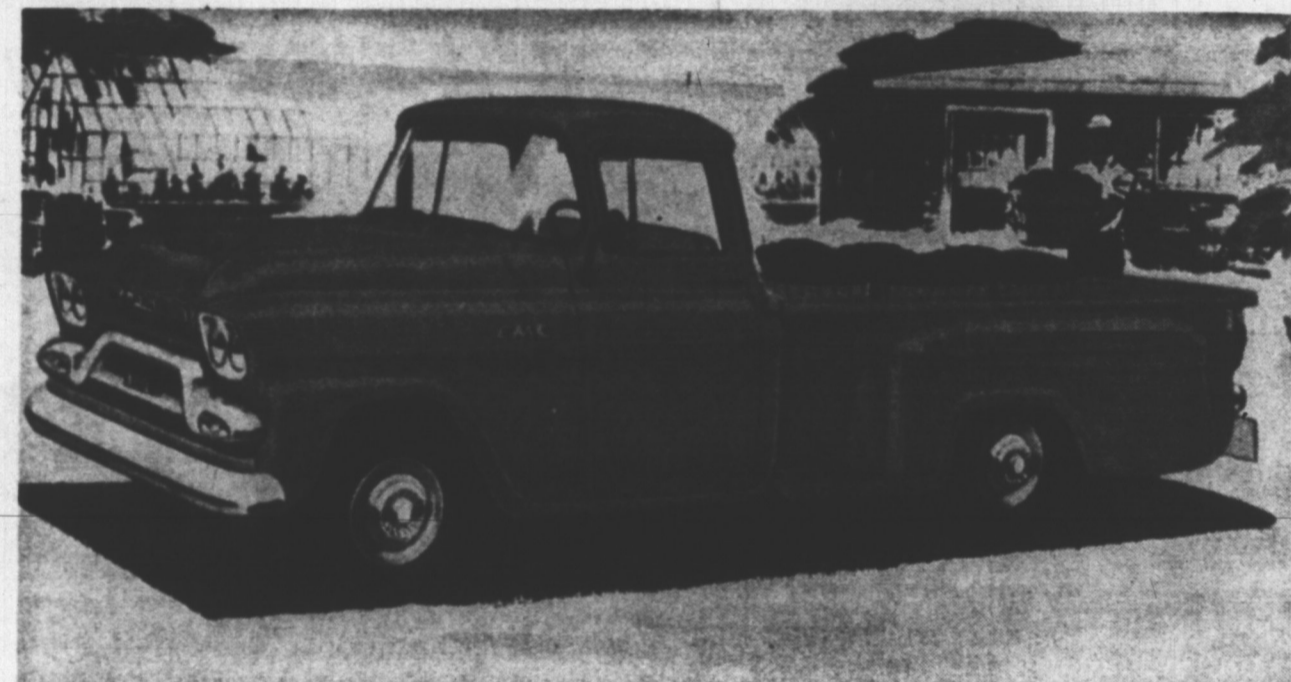
- ESSO GASOLINE ● ESSO DIESEL FUEL
- MOTOR OIL ● ESSO EXTRA GASOLINE
- ESSO STOVE OIL ● GREASES

W. T. COFFIN
Always Look To Imperial for the Best MORELL PHONE 5

Now at Allison MacLeod Limited

BOOST YOUR FARM INCOME

with an Economical Dependable



TRUCK

FIRST CHOICE OF WISE FARMERS - - EVERYWHERE!

GMC Does More Work Per DAY - - - - More Work Per Dollar

GMC gives you the widest choice of V8 and 6 power plants in the industry! GMC Driver-designed cabs give you hidden safety step, deep-seated comfort, wrap around windows! GMC gives you the widest choice of transmissions in the industry! GMC gives you the widest choice of axles in the industry!

REPAIRS and SERVICE

Our service department, consisting of factory-trained mechanics, is at your service at all times to correct the mechanical troubles of your car, truck or tractor. Combine this with our modern repair machinery and you are assured of speedy efficient service at all times. We also have a modern up-to-date parts department, carrying a complete stock of factory parts for all GMC products.

Guaranteed Used Cars and Trucks At Lowest Prices

A Personal Message to District Farmers From Earle G. MacLeod

It gives me a great deal of pleasure to make this opportunity to say, "Thank You" for your patronage in the past and I sincerely hope that you will continue to give us the opportunity to serve you in the future. The next time you're in town drop in and say "Hello". We'd be happy to see you!

ALLISON MacLEOD LIMITED

"Your Dealer for Pontiac - Buick - GMC Trucks and Cars"

CORNER CUMBERLAND AND KENT STS. PHONE 7364

RURAL LINES
JUICE FOR THE FARMER
REDDY KILOWATT Your Electric Servant

FARM BETTER ELECTRICALLY by letting me do more work for you.

I'm one hard hand who never leaves, never tires, never grumbles. My wages are low. Here are just a few of the many jobs I can do:

- PUMP WATER.
- LOWER MORTALITY RATE OF PIGS AND CHICKS.
- INCREASE EGG PRODUCTION
- STEP UP MILK PRODUCTION.
- LIGHT UP BUILDINGS AND YARDS.
- DRY HAY.

Reddy Kilowatt
Your Electric Servant.
MARITIME ELECTRIC COMPANY LIMITED

SA's

For Every Member of the Family ... the first choice For Fashion and Economy IN ...

TOWN or COUNTRY
S. A. McDonald's -- Charlottetown
The Home of Friendly Service