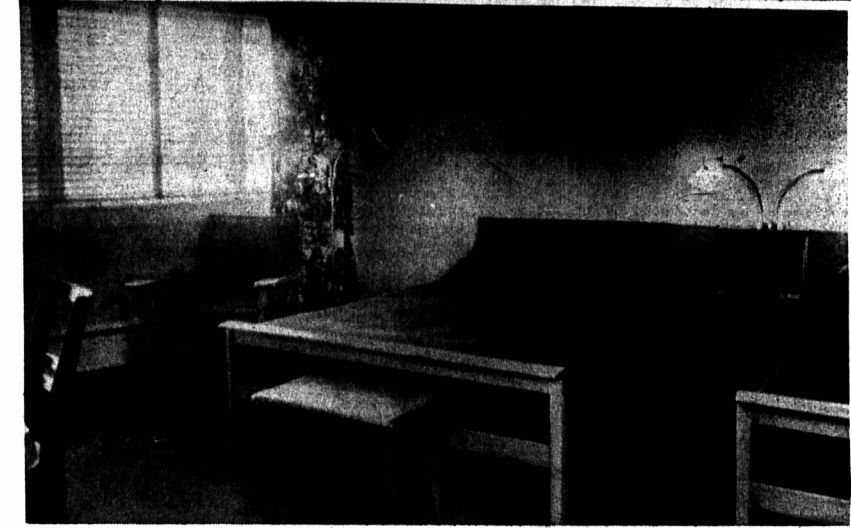


LUXURIOUS & MODERN TOURIST ACCOMMODATION EXQUISITE DESIGNING FEATURES MOTEL INTERIOR



Motel Charlottetown will feature interiors of outstanding beauty, most modern and luxurious furniture, neatly tiled roomy bathrooms and ample closets and luggage space. The hot water heating with radiant baseboard panels which will be thermostatically controlled will guarantee guests comfortable temperatures at all times and the thorough insulating throughout will give cool surroundings in the hottest weather. Cross ventilation, augmented by a specially designed angle drive casement window will ensure an abundance of fresh air without danger of drafts. All units are completely sound proof.

Wallie admits that the credit for the exquisitely designed interiors must go to his wife, Sally, who after exhaustive research, coupled with a great many of her own ideas came up with a blending effect which is bound to meet the most discriminating tastes.

Twelve of the units have floors covered with Wilton Broadloom rugs in soft colors from wall to wall. The other four have plastic tile floors which are principally intended for patrons with young children. In either instance the appearance is equally pleasing.

The units having the tile floors have three of the walls finished in knotty pine the feature wall is in scenic wall paper. No two units in the motel are decorated alike, but in each case the draperies, bed coverings and furniture blend nicely with the overall surroundings.

Room furnishings are the most modern that could be procured. Large mirrors and lighting from table lamps, floor and central lighting are accessories which will immediately catch the eye.

The bathroom will delight those who like plenty of room. Each bathroom has a large tub and shower. The flooring and walls done in contrasting colors such as azure blue and white, rachel and black add much to the attractiveness of the room. The lighting and mirrors are assets in preparing ones appearance.

Two types of furniture are used in the motel. "The Imperial Contemporary" has modern lines and is done in a "sandstone everdure" finish which is impervious to stains of any kind. Other units feature "Period design" furniture of Vilas Rock Maple which also have stain resisting qualities.

The motel features "Beautyrest" mattresses some of which are extra firm for patrons who prefer that type. Book racks and bed tables are also part of the furniture ensemble.

Each unit is to have a telephone connecting with a central switchboard... a most valuable aid to businessmen and too for those who wish to keep in touch with home, away from home. Individual radios for each room are placed there for the enjoyment and convenience of the patrons.

Congratulations
AND
BEST WISHES
TO
MOTEL CHARLOTTETOWN
ON ITS OFFICIAL OPENING

It is a beautiful building and a wonderful asset in promoting the Tourist Industry of our Province.

JOHN O. GOOD
WINSLOE DIAL 7469
Electrical Contractor
Who Wired
The Motel

Congratulations
TO THE PROMOTERS OF
MOTEL CHARLOTTETOWN
WHO DESERVE THE
HIGHEST TRIBUTE FOR
THEIR FINE ACHIEVEMENT

We are privileged to be the suppliers of all Concrete Floors, Side Walks and Foundations.

LARTER BROS.
40 Passmore St. Dial 4507
Manufacturers of
Concrete Brick, Concrete Blocks, and Concrete Sewer Pipe.

Motel Charlottetown, a luxurious and modern tourist accommodation, consisting of 16 units will officially open to the public today. Actually a number of the units have been occupied as fast as they could be gotten ready for occupancy, but the public are invited to inspect this establishment which could be realized only after years of experience in catering to the travelling public and much research on the part of the Proprietor Mr. Wallace Rodd who with his wife Sally planned and decorated the building with a view to giving a maximum of comfort and pleasure to their guests.

Situated on a rise of ground at the junction of the Malpeque and Trans Canada highway, the three acres of land on which the Motel is built commands an excellent view of the countryside in every direction.

Two of the units are suites comprising connecting bedroom and bed sitting room and another two units are connected by adjoining doors. These prove very popular for family use, or for two parties traveling together. Any one of these units can of course be used individually.

A central lounge of stone construction offers a very homey atmosphere with comfortable easy chairs and large fireplace. In the lounge is situated the coffee shoppe where full course breakfasts will be served. Lunches can be obtained at any time throughout the day, including lunches to take out. The lounge opens unto a porte cochere where patrons can enter or leave their autos without being exposed to the weather. A concrete sidewalk runs the entire length of the building.

Compliments
of
SIMMONS' LIMITED
MANUFACTURERS OF THE FAMOUS
Beautyrest Mattress
AND
MATCHING BOX SPRING

Congratulations
Mr. & Mrs. Rodd
ON THE OPENING OF YOUR BEAUTIFUL MOTEL
IT WAS A PLEASURE TO SERVE YOU THROUGH OUR
CHARLOTTETOWN RETAIL BRANCH

When you need Building Supplies do as Mr. Rodd did — you will be assured of Satisfaction too

SCHURMAN CO. LIMITED
KENSINGTON - SUMMERSIDE - CHARLOTTETOWN

Motel Charlottetown

One Of The
MOST MODERN IN THE MARITIMES

Congratulations to Mr. and Mrs. Rodd on the establishment of this fine new addition to our Tourist Facilities.

F.A.S. Jones **Simpsons-Sears Ltd.**
129 Kent St., Charlottetown.



Provides a further attraction in the progress of our city.

This firm supplied the building hardware and carpet used throughout the Motel.

We are pleased to add our congratulations and wishes for future success.

R. T. HOLMAN LTD.
Summerside - Charlottetown



WERE FINISHED IN
C.I.L. PAINTS and VARNISHES

WE CONGRATULATE MR. AND MRS. RODD AND WISH THEM EVERY SUCCESS IN THEIR ENTERPRISE AND PROGRESS

CANADIAN INDUSTRIES LTD.
PAINT AND VARNISH DIVISION