

TENDER

SEALED TENDERS will be received until noon on Friday, May 16th, 1958, for construction of **HILL SPOROUGH BRIDGE SOUTH APPROACH.** Specifications and Plans may be obtained at the office of the undersigned, Old Post Office Building, Charlottetown, Prince Edward Island. Deposit of \$50.00 is required and will be refunded when the Plans are returned to the Department.

Lowest or any Tender not necessarily accepted.

NOTE: Tenders will be opened at the above advertised time; and bidders are invited to present their bids in person (or otherwise) and be present at the opening.

J. G. MacKAY
Minister of Highways.

Charlottetown,
Prince Edward Island.
May 8th, 1958.

FOR SALE

COTTAGE COURT, at Stanhope, near beach consisting of large cottage for living quarters with two cottages for sleeping

Electricity, Propane Gas Range, and Heaters in both cabins. Frigidaire, built-in cupboards and completely furnished. 1 1-5 acres of land.

For particulars and inspection contact:

E. ARNFAST — PHONE 8034

WANTED -- 2 ONLY SALESMEN

Large Maritime Company has openings

For two aggressive men, age 35-45, with selling experience. This is an exceptional opportunity for the right men. Home office at Charlottetown. This position includes salary, company bonus and pension plan, as well as car allowance.

Apply by letter to Post Office Box 6

Charlottetown, P.E.I.

WANTED

Wanted for Kensington School a science teacher for Grades 11 and 12 and male principal with 1st class license for elementary school, also teacher for grades 5 and 6.

MRS. C. M. KENNEDY,
Secretary.

A. Pickard Machinery Ltd.

and

A. Pickard & Co. Ltd.

Will be closed until Monday, May 12, owing to the death of Mr. Alfred Pickard.

AUCTION SALE

The Estate of J. Frank Quinn (contractor) offers for sale by public auction, large 3-storey double tenement house of brick construction situated at 100 and 102 King St. Double size lot with some outbuildings, also household effects.

This sale to include contractors equipment such as hydraulic jacks, jack screws, cables of wire and rope, assorted pulleys, pile driver heads, heavy chains, creosote blocking, timber picks, bars, plus an assortment of large and small tools.

Sale on Thursday May 15 at 2 o'clock.

Trainer and O'Donnell
Solicitors

J. J. Mustard
Auctioneer

DIVISION OF MENTAL HEALTH

Nursing staff — Riverside Hospital — Women's Building

Applications are invited for the following positions:
Graduate Attendants—for permanent staff duty and vacation relief work.

Starting salary \$125.00 per month with three yearly increases.

Student Attendants—Two year course of instruction in practical nursing and allied subjects. Diploma awarded to students successfully completing the period of training.

Room, board and uniforms supplied to student attendants.

Stipend—\$50 per month for first year
\$60 per month for second year.

For application forms and further particulars write to: Director of Nursing, Riverside Hospital, P.O. Box 4000, Charlottetown, P.E.I.

NOTICE

Due to our collector being ill this month, will customers of Keefe Hygiene Service please pay at office--
178 KENT STREET

BUSINESS OPPORTUNITIES

Snap on tools of Canada Limited have a franchise available in Prince Edward Island. Protected territory. Half-ton panel truck and capital required. Protected investment. For further information contact—

T. A. GALLOWAY,

at the Charlottetown Motel May 14 and 15.

MASTER FEED SERVICE MILL

Mt. Stewart

Will be operating Farano Seed Cleaner daily until June 1st.

"We carry a complete stock of Master Feeds and Concentrates, Grass and Root Seeds at lowest prices. Also dealers in TV and Appliance Sales. Service and Insulation. We aim to please."

F. W. CLARK

AUCTION SALE

At Hampshire on Tuesday, May 13 at 1 o'clock the following stock:

8 milch cows freshened from February first until April first; 1 cow to freshen May 13, 1 cow to freshen June 4; 4-1 year olds, 1 bull (Poll Angus) 2 yrs. old; 7 spring calves (Shorthorn grades); 1 Blood Horse, 8 yrs. old.

Terms of sale: Up to \$25.00 cash, over that amount 6 months credit on approved joint notes, 6% per annum on notes, 6% off for cash.

Lowell Tremere
Owner

Claude Craswell
Auctioneer

CHEK-R-MIX FEED SERVICE

Custom grinding and mixing while you wait.

Complete Chek-R-Mix Feeds.

Purina Chows and Sanitation Products.

New Idea Farm Machinery.

Grass Seeds — Fertilizers.

Winsloe

Phone 9514

AUCTION SALE

Having been instructed by Ray Rayner to sell by public auction on the premises of Major Moase, St. Eleonors on Monday, May 12, 1958 at the hour of 12:30 p.m.

The following stock—2 year-old steers; 1 Shorthorn; 10 month old bull; 1 spring calf.

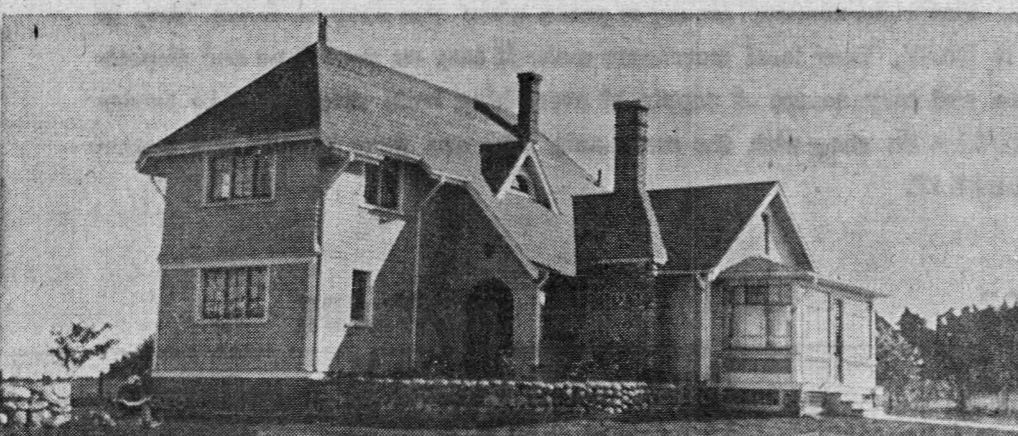
Machinery—International H tractor with hydraulic cultivators; Massey Harris No. 44 tractor-row crop, Massey Harris 70 bu. manure spreader on rubber, Cockshutt P.T.O. mower 6 ft., Cockshutt No. 132 self propelled 10 ft. cut combine, John Deere 36 spring tooth harrow, Frost and Wood No. 7, 13 disc drill seeder, Hardie potato sprayer, 1 set platform scales, 1 set Dickson fanners, 2 riding wagons, 1 jaunting sleigh, 1 wood sleigh, walking scuttler, coal brooder.

Household articles including—Ice chest, combination desk and bookcase, tables, chairs, dressers, etc.

Terms cash, credit could be arranged on combine and tractors. If not fine first fine day following.

RAY RAYNER
Owner

MAJOR B. MOASE
Auctioneer



FOR SALE

Modern single dwelling situated about four miles from the City containing seven rooms, sun room and bath. Automatic water system. Hot water heating. Excellent repair. Very spacious and attractive grounds. 15 acres of beach property. Also two summer cottages. Ideally situated for tourist development. Purchase may be financed.

For particulars apply—

The EASTERN TRUST Company

154 Richmond Street

DAILY MARKET QUOTATIONS

SUMMARY

By THE CANADIAN PRESS
Toronto—Market higher in moderate trading.
New York — Market higher; rails continue rise.
Montreal: Market higher in active trading.

CURRENCIES

MONTREAL (CP) — The U.S. dollar closed at a discount of 3 1/2 per cent in terms of Canadian funds Friday up 1-32. Pound sterling \$2.79 9-16, up 3-16. U.S. dollar bid 96 25-32; asked 96 27-32.

TORONTO

TORONTO CLOSING STOCKS
By The Canadian Press
Toronto Stock Exchange—May 9
(Quotations in cents unless marked %)
z—Odd lot, x—Ex-dividend, xt—Ex-rights, xv—Ex-warrants.

Stock	Sales	High	Low	Close	Chg
Acad Uran	1500	6	6	6	
Advoca	100 310	310	310	310	1/8
Agnico	1500	52	52	52	
Alkalic	12000	65	63	65	+1/4
Alpha Expl	11000	5 1/2	5 1/2	5 1/2	+1/4
Algon	1207	16 1/2	16 1/2	16 1/2	-1/4
Am Larder	1600	20	20	20	
Amal Rare	4231	40	38	40	
Am Nephe	2500	70	70	70	
Apex Res	1000	4	4	4	-1/4
Arctadia	8100	17	16	16 1/2	-1/4
Arjona	2000	11	11	11	+1/4
Arjona	1000	11	11	11	+1/4
Athl-Ruf	8300	23	22	22	-1/4
Amasco	3000	15 1/2	15 1/2	15 1/2	+1/4
Amazone	11500	10 1/2	10 1/2	10 1/2	
Amor	300	240	240	240	
Barnes	2500	17	16	17	+1/4
Bankena	7000	38	37	38	
Barnat	10000	74	74	75	+1/4
Bary Exp	2000	19	19	19	+1/4
Base Metals	2200	20	19	20	+1/4
Banks	19000	23 1/2	23 1/2	23 1/2	-1/4
B-Buy	5500	22	22	22	
Beausage	1768	85	85	85	
Beav Lod	700	15	15	15	
Beche	2500	105	101	101	-1/4
Betham	19700	16	16	16	-1/4
Bevon	3750	14	14	14	
Bibus	3000	7	7	7	+1/4
Bicredit	3750	108	106	106	-1/4
Bicredit	11500	18	17	18	+1/4
Bidcap	6000	18	17	18	+1/4
Black Bay	1000	25	25	25	+1/4
Bogman	200	54	53	54	+1/4
Broul Reef	2700	54	53	54	+1/4
Brunsm	3000	5	5	5	+1/4
Brunsm	500	6	6	6	+1/4
Buff	1000	61 1/2	61 1/2	61 1/2	+1/4
Buff Ank	4500	115	108	110	-1/4
Bull	2000	11 1/2	11 1/2	11 1/2	-1/4
Bunker Hill	2000	11 1/2	11 1/2	11 1/2	-1/4
Camp Chib	1250	500	490	500	+5
Camp RL	600	840	835	835	+5
Can Astoria	500	7	6 1/2	6 1/2	-1/4
C Dyno	3820	25 1/2	25 1/2	25 1/2	+1/4
C Malart	22600	25 1/2	25 1/2	25 1/2	+1/4
Candore	1000	21	21	21	
Can-Erin	34500	30	18	18	-1/4
Can-Met	7700	139	134	138	-1/4
Can-Met	750	64	61	61	-1/4
Cariboo	2000	71	70	71	+1/4
Cassiar	1450	785	785	785	+30
Castle	100	300	330	330	
Cayzor	100	200	200	200	
Cent Pat	900	106	106	106	-1/4
Chesvik	1000	61 1/2	61 1/2	61 1/2	-1/4
Chib J	4000	60	56	60	+5
Chib M	6700	70	65	70	+6
Chimo	4000	60	49	49	-1/4
Chim	1500	305	300	305	-5
Cody-Reco	1000	13	11	13	+1/4
Cole Lake	3500	18	17	17	-1/4
Colistm	4300	29	27	27	-1/4
Comair	1500	32	32	32	+1/4
C Belleken	6500	10	10	10	+1/4
C Callinan	2000	15	15	15	
C Den	14573	515	1454	1474	+1/4
C Discov	5500	300	345	355	+5
C Fen	11550	320	300	320	+15
CG Arrow	8000	60	60	60	
C Halliwell	13700	23	23	23	
Con Howey	300	200	200	200	-1
C Harben	2000	30	30	30	-1
C Marens	2000	67	64	64	+1/4
Com M S	3240	81 1/2	81	81 1/2	+1/4
C Mogul	2100	118	113	115	+1/4
C Morrison	1000	21	20	21	+1/4
C Mosher	1000	20	20	20	+1/4
Com Negus	14300	35	32 1/2	35	-1/4
C Northland	3500	22	20	22	+1/4
C Perth	1000	10	10	10	+1/4
C Regour	1700	10	10	10	+1/4
C Sannorm	8500	7 1/4	7 1/4	7 1/4	
Can Suf	3000	75	72	74	+1/4
C Tungsten	100	345	345	345	+10
Conwest	100	345	345	345	+10
Cop Corp	2500	20	20	20	
Covrad	4214	141	136	141	+3
Coules	15700	72	70	71	+2
Crestaur	1000	10	10	10	
Cronin	2500	8	7 1/4	7 1/4	-1/4
Cusco	87700	24 1/2	22	24 1/2	-1/4
Dairing	712	20	20	20	-2
D'Aragon	8000	23	22	22	
De Cour	600	31	31	31	
Delite	2000	51	50	51	+1/4
Dome	520	81 1/2	81 1/2	81 1/2	+1/4
Donalds	4000	13	12	12	-1/4
East Mal	200	145	145	145	+3
East Sull	3800	165	165	165	+1
Elder	87400	100	92	92	+7
Elrich	1200	27	27	27	+1/4
El Sol	4500	11 1/2	11 1/2	11 1/2	
Eureka	1500	23 1/2	23	23 1/2	+1/4
Falcon	225	524	523 1/2	524	-1/4
Faraday	2800	140	138	138	+2
Foxwell	2000	13	12	12 1/2	+1/4
Fed Kirk	1500	7	7	7	-1/4
Frobisher	2180	169	165	165	-1/4
Frob deb	50	575 1/2	574	574 1/2	-1/4
Galtwin	5000	8 1/2	8	8	-1/4
Galkeno	8118	103	92	96	+5
Geo Mines	1050	81 1/2	81	81 1/2	+1/4
Genes	1000	13	13	13	
Geo Scian	1500	34	34	34	+3
Giant YK	1600	635	625	635	-5
Glacier	8150	300	180	200	
Glen Uran	210	7	7	7	
Goldreef	90550	18	14	15 1/2	+2
Gold Eagle	15500	9 1/2	9 1/2	9 1/2	+1/4
GP Uran	500	9	9	9	-1/4
Granby	200	475	475	475	-25
Grandrov	24600	36	36	36	+1
Granduc	500	120	120	120	+1
Greyh	8200	18 1/2	18	18	-1/4
Gulch	12321	17	13 1/2	15	+1/4

Gull Lead	500	9	9	9	+1
Gunnar	7885	516 1/4	16 1/4	16 1/4	-1/4
Gunnar wts	4480	785	750	785	+5
Gwillim	2500	8 1/2	7	7	-1/4
Halmson	23350	79	71	79	+8
Hard Rock	7000	10	10	10	
Har-Min	46000	16	15	16	+1 1/2
Headway	38750	74	72	74	+1
Health	600	7 1/2	7 1/2	7 1/2	+1 1/2
Hollinger	725	82 1/2	21 1/2	21 1/2	+1/4
Hoyle	1000	450	435	450	+30
Horley	185	84 1/2	42	42 1/2	+1/4
Inspiration	3700	50	50	50	+1
Int Ran	36200	25 1/2	25	25 1/2	+1/4
Irish Cop	5900	120	107	118	+9
Jacobus	3500	120	118	120	-2
Jaye Expl					