

EATON'S WEDNESDAY IS Dollar Day

Shop In Person. No Phone or Mail Orders, Please! No Delivery on Dollar Day Items.

HOSIERY DEPT.

Women's Nylons
First quality seamless mesh in burnt sugar, tender beige and charcoal, sizes 9 to 11.
Special, 3 pairs 1.00

Nylons Clearance of Ankle Socks
In assorted colours, sizes 7 to 11.
Special, 2 pairs 1.60

Clearance of Summer Shades of Gloves
Sizes 6 1/2 to 7 1/2.
Special, pair 1.00

Clearance of Viyella Ankle Hose
Sizes 6 1/2 to 8.
Special, 2 pairs 1.00

Clearance of Sleeveless Blouses
In assorted plaids and prints, sizes 12 to 18.
Special, each 1.00

CHILDREN'S WEAR

Children's T-Shirts
Cotton knit, sizes 3 to 6x, assorted colours.
Special, 3 for 1.00

Girls' Short Sets
Stripe tops, plain shorts, sizes 3 to 6x.
Special, set 1.00

Toddlers T-Shirts
Cotton knit, sizes 1 to 4, assorted colours.
Special, 3 for 1.00

Toddlers T-Shirts
Cotton knit, sizes 2, 3 and 4, assorted colours.
Special, 2 for 1.00

Boys' T-Shirts
Cotton knit, sizes 3 to 6x, assorted stripes.
Special, 2 for 1.00

Girls' T-Shirts
Cotton knit, mock turtle neck, sizes 3 to 6x.
Special, 2 for 1.00

Denim Knee Knockers
Navy, sizes 4 to 6x.
Special, each 1.00

Boys' Cabana Sets
Sizes 3 to 6x.
Special, set 1.00

Girls' Cotton Blouses
Assorted styles, sizes 4 to 6x.
Special, each 1.00

Polo Pyjamas
Cotton knit, screen print, trim, sizes 4 to 6.
Special, each 1.00

Children's Play Shorts
Cotton, assorted colours, sizes 4 to 6x.
Special, 2 for 1.00

Infants' Blankets
Size 30" x 40".
Special, each 1.00

Cotton Slips
Lace trim, sizes 4 to 6.
Special, each 1.00

Kangaroo Shirts
Cotton, fleece, sizes 4 to 8, assorted colours.
Special, each 1.00

Girls' Short Sets
Cotton print, sizes 4 to 6.
Special, set 1.00

Infants' Vests
Ribbon front, short sleeve, sizes 6 to 18 months.
Special, 2 for 1.00

Toddlers Dresses and Rompers
Special, each 1.00

Girls' Stretch Swim Suits
Assorted styles and colours.
Special, each 1.00

LINGERIE DEPT.

Women's Briefs
Rayon tricot, oversize.
Special, 2 for 1.00

Bib Aprons
Large size, assorted print cottons.
Special, each 1.00

Slips
Rayon tricot, lace trim, sizes 32 to 40.
Special, each 1.00

Half Slips
Rayon tricot, lace trim, assorted colours, sizes small, medium and large.
Special, each 1.00

Half Slip & Brief Sets
Rayon tricot, assorted colours, sizes small, medium and large.
Special, set 1.00

Women's Briefs
Cotton interlock, elastic high-rise, sizes small, medium and large.
Special, 2 for 1.00

DRUG DEPT.

1 Lb. Box Cottage Sweets
Toffee assortment.
Special, 1.00

Tooth Brushes
Adult, assorted colours.
Special, 3 for 1.00

Brush and Hankie Set
Girls.
Special, 1.00

Ipana Toothpaste
Large size.
Special, 3 for 1.00

Bath Salts
2 1/2 lb. cello.
Special, 2 for 1.00

200 Foot Reel Cans
Special, 2 for 1.00

Colgate Toothpaste
Super size.
Special, 1.00

Assortment of Individually-Wrapped Candy
Special, 2 for 1.00

Ladies' Hair Brushes
Assorted colours.
Special, 2 for 1.00

STATIONERY DEPT.

Dictionary
Completely new and up to date, over 60,000 references, suitable for home and office use.
Special, each 1.00

Pen Lite Set
Consists of ball point pen, mechanical pencil and pen lite.
Special, set 1.00

Writing Kit
Consists of stick pen, ball point pen, mechanical pencil, extra leads, refills and erasers.
Special, kit 1.00

Stationery
20 sheets and envelopes, assorted motifs, boxed.
Special, 2 for 1.00

Playing Cards
Plastic coated cards, assorted designs.
Special, each 1.00

Lunch Kits
Children's vinyl covered, luminous designs for safety.
Special, each 1.00

JEWELLERY DEPT.

Billfolds
Valhyde leather, ladies and gents, assorted styles, colours black, brown and red.
Special, each 1.00

Jewellery
Assortment of pins, earrings and neckties.
Special, 2 for 1.00

Children's Jewellery

Necktie and bracelet with assorted charms.
Special, set 1.00

Boys' Identification Bracelets
Yellow gold, coloured expansion bracelet.
Special, each 1.00

Bracelet and Earring Sets
Yellow gold coloured bracelet with matching earrings.
Special, set 1.00

Manicure Sets
Nail scissors, file, tweezers, etc. in leather case.
Special, set 1.00

NOTION DEPT.

Bridge Table Covers
Plastic with point count system and scoring table.
Special, each 1.00

Quilt Patches
Approximately 1 lb poly bag for aprons, dolls clothes, etc.
Special, 2 for 1.00

Clearance of 4 Ply Fingering Yarn
Or double knit 1 oz balls, good variety of colours.
Special, 4 for 1.00

Rain Hats
Cloche style, all purpose, assorted colours.
Special, each 1.00

Bridge Covers
Quilted plastic, fits all standard size bridge tables.
Special, each 1.00

Oven Mitts
Extra long for added protection, quilted and padded.
Special, 1.00

Shoe Brush
Excellent quality.
Special, 1.00

Shoe Tote Bag
Plastic lined drawstring closing.
Special, 1.00

Laundry Bag
Unbleached cotton, approximate size 17 x 34", drawstring closing.
Special, 1.00

Linen Thread
White, drab brown, 100 yard spool.
Special, 6 for 1.00

Plastic Shoe Bag
Holds 6 pairs shoes, assorted colours.
Special, 1.00

YARD GOODS

Corduroy
36" wide.
Special, yard 1.00

White Flannelette
27" wide.
Special, 3 yards 1.00

Plain Cotton
36" wide.
Special, 2 yards 1.00

Cotton Prints
36" wide.
Special, 2 yards 1.00

Cotton Prints
36" wide.
Special, 2 yards 1.00

MEN'S and BOYS' WEAR

Boys' Cotton Pants
Assorted colours, size 6 only.
Special, pair 1.00

Boys 100% Nylon Hose
Special, 3 pairs 1.00

Boys' Cotton Socks
Viscose and wool blend.
Special, 2 pairs 1.00

Men's Hose

Sizes 10 1/2 to 12.
Special, 2 pairs 1.00

Men's Work Socks
Special, 2 pairs 1.00

Men's Hooded Sweat Shirts
White and coloured, sizes small, medium and large.
Special, each 1.00

Boys' Souvenir T-Shirts
Medium only.
Special, each 1.00

LINEN DEPT.

Bath Towels
Plain and stripe, medium weight terry, size 20" x 40", assorted colours.
Special, pair 1.00

Chair Back Sets
Ecru colour ground in coloured cross-stitch design.
Special, 2 sets 1.00

Terry Hand Towels
Size 15 x 25", turquoise only.
Special, 3 for 1.00

Tablecloth
Printed rayon, size 50 x 50", white ground in floral designs.
Special, each 1.00

Tea Cloth
Concord check, made of linen and cotton, size 36 x 36", assorted colours.
Special, each 1.00

Pillow Cases
Floral and coloured border, assorted colours, size 42 x 36".
Special, pair 1.00

Linen Glass Towels
Size 17 x 29", assorted floral and fruit design.
Special, 2 for 1.00

DRAPERY DEPT.

Plastic Drapes Floral Patterns
84" long, assorted colours.
Special, pair 1.00

36" Stripe Barkcloth
Colours blue and green.
Special, yard 1.00

HARDWARE DEPT.

Insulated Glasses
Special, 3 for 1.00

Chair Caddy
Attaches To Tubular Furniture
For easier picnics and parties.
Special, 2 for 1.00

Candy Cans
With painted designs.
Special, 3 for 1.00

Cups & Saucers
Special, 3 for 1.00

Cups & Saucers
English china, assorted patterns.
Special, each 1.00

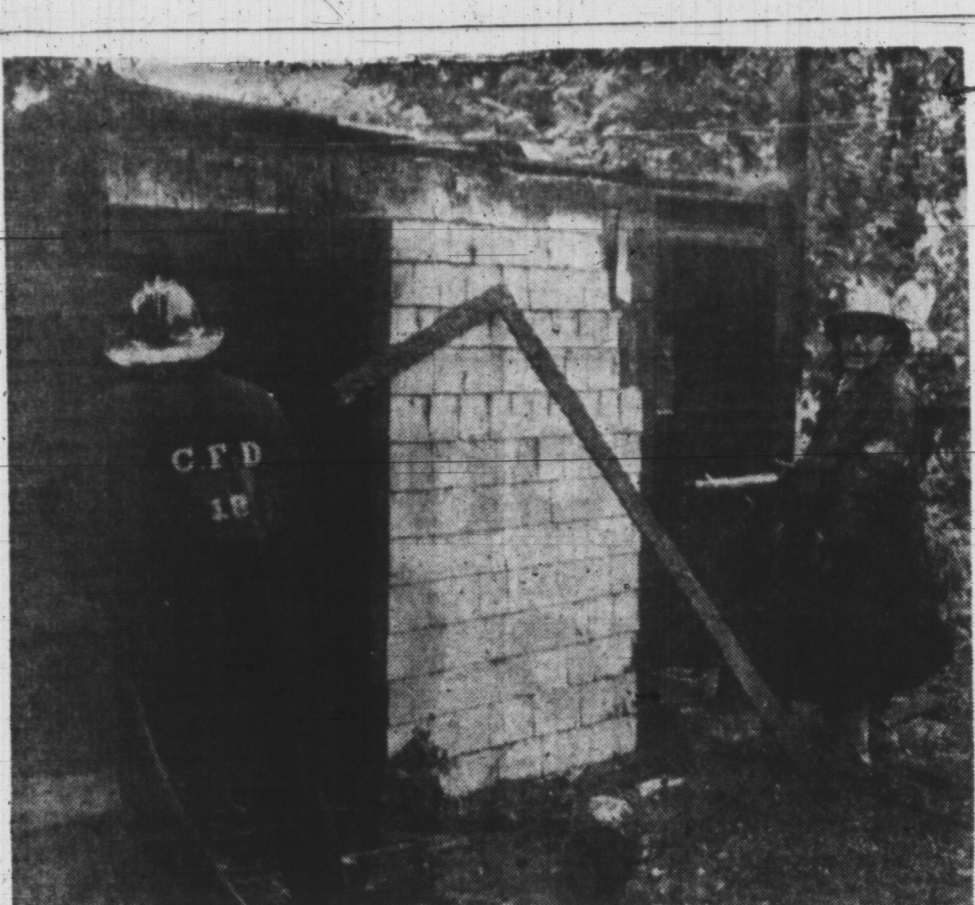
SPORTING GOODS and TOYS

Softball Bat
Official size.
Special, each 1.00

Car Wax
One step cleaner and wax.
Special, each 1.00

Inflatable Beach Toys
24 inch ring, assorted styles.
Special, each 1.00

Plastic Models
Easy to assemble.
Special, each 1.00



WILL SOMEBODY PLEASE ...

turn on the water? dripping hose. The other fireman, Roger MacDonald, is seen fighting the blaze which erupted in a shed on 9 Gerald Street yesterday afternoon. A spokesman for the department said there was slight damage.

THIS AGRICULTURAL INDUSTRY

Strawberry Crop Said Poor, Look At N.S. Tobacco Crop

By NEIL A. MATHESON
Island strawberries will probably be half a crop this year, or possibly a little more. That's the picture I got last night after talking with growers at Pisquid, Mt. Stewart and Cross Roads to name a few.

Milton Rodgers of Pisquid exchange said they probably won't have half of last year's production. Another exchange member said the same thing.

But there was no agreement on the reason. Many growers told me several weeks ago, on our trip to Nova Scotia, that the runners did not stretch out last summer because of the dry year.

That would retard production, they suggested.

Mr. Rodgers told me last night might be the late spring frost which killed off some early potatoes also killed off some of the berry blossoms.

There are many reasons advanced for the smaller crop. One man told me he heard a grower say the full moon didn't come at the right time.

That's an old belief I thought had pretty well died out.

BUCKWHEAT AN EXAMPLE
I recall when many people didn't sow buckwheat unless the moon was in the right phase. And there are still people who insist bacon will shrivel up in the frying pan unless the pig is killed in the right phase of the moon.

But I can't recall the moon phase idea ever being applied to strawberries before.

Warren McGurk at Mt. Stewart suggested the crop might be a little better than half—he hears growers talking. And several men in the Charlottetown area said the berry crop might well be better than half.

They could not estimate it accurately right now but they believed the crop would be well below that of a year ago.

The Baldersons at Cross Roads have long been considered among the better growers. The Alexandras also have a long-standing reputation. Lloyd Balderson said last night they have had some good pickings from the early new berries—sown last year—but he feels they will not stand up like they did a year ago.

Old berry fields are fairly good, he said. Mr. Balderson said that Vernon MacLennan, Alexandria had a somewhat similar story.

Vernon's strawberry field was struck by lightning several weeks ago. There were a couple of holes in the field next morning and an area of plants was shrivelled from the blast. And that is one of the unusual things I've heard about a lightning storm.

Nova Scotia's Annapolis Valley is producing more tobacco leaf to the acre than the tobacco men here and apparently much of the extra production is caused by the greater amount of heat in the Valley and the irrigation which brings water to land that needs it to spur growth.

That's the picture I got last week when I spent a couple of days with Island growers on visits to see what tobacco men elsewhere are doing.

But Island growers—some of the best were on the trip—will not accept The Valley

H. BENNETT CARR
Sun Life of Canada
District Supervisor
Insurance Counselling
Charlottetown, P.E.I.
Phone 4-8817 - 4-8435

Get rid of those dark corners. It's time for a modern lighting job. With proper lighting indoors and outdoors, you can really show off the beauty of your home. See your contractor today.

ROHM HAAS
COMPANY OF CANADA LIMITED
WEST MILFORD, N.J.
DETENTE is a trade mark Reg. Canadian Pat. Off. and in principal foreign countries.
Distributed by
Canada Packers Ltd.
Summerside at their dealer nearest you.

"Pile" with a long "T", also grows tobacco, but it's only part of a large-scale operation. He has winter wheat and Rye, there's a large acreage of Cauliflower, he has a large pigery, among other things. He has potatoes as well.

I didn't hear him say this, but some of our lads said he can produce potatoes at a cent a pound.

He's an engineer by profession and he uses cost accounting to show exactly how much time each of his men spend on a given machine or on any given job. He really knows what it costs to produce any given item.

I was also told he grows tobacco only because it helps to keep his eight men busy through the winter months. Good men are hard to come by and this man evidently doesn't want to lose any.

I saw people harvesting potatoes in The Valley—Mearle Rodgerson, Fanning Brook told me he'd be digging this week. I saw others harvesting berries.

I saw at a distance one of the big poultry houses of Cyrus and Manning Epps—it was in Canning. And of course there are the Valley apple orchards for which the area is best known.

I'd liked to have gotten around to see something of each operation, but I was with a tobacco tour, so we saw tobacco.

The tobacco in Nova Scotia is centered in an area I would judge to be within a 10-mile radius. We saw the whole thing from ground level, then we went up to Lookout Point on North Mountain—it's 665 feet above sea level—and saw a large slice of Valley farming operations from up above. It was an unusual opportunity to look down at the people who were working far below.

Several weeks ago I talked about the strawberry operation of the Everett Howatts of Tron. Everett Jr. tells me I made a mistake in their price. They charge 15 cents a pound and the people bring their own containers, and pick their own berries.

SERIES OF TALKS
Attention of Island farmers is called to a series of talks and panel discussions on agricultural subjects. It covers specialized crops like strawberries, blueberries, cole crops and many others.

Barley, an increasingly important crop, is also slated for discussion. A story in some detail will be found elsewhere in today's Guardian.

The date is Thursday afternoon, July 28 and the place is Birch Court at the Experimental Farm.

Island News Page

2-The Guardian, Charlottetown, Tues., July 19, 1966.

Dedication Service At Annandale

Dedicated to the memory of Mrs. Roy Howlett of Annandale, the former Victoria Jenkins (née Albin), a communion table and chairs were presented to Annandale United Baptist Church at the Sunday evening service by Mr. Howlett and members of his family who were enjoying a family reunion at their old home.

Attending the service in honor of their mother were Rev. Byron Howlett, pastor of Christ Church, Dartmouth, N.S. Rev. Lie. Myrtle Ingersoll, pastor of the church, conducted the dedication service, assisted by Rev. D.I. Howlett who lead in prayer and by Rev. B.F. Howlett who presented the evening's message. Several hymns of faith were sung by the guest choir from Murray Harbor Baptist Church.

Lewallace Howlett of the Summerville Church of Christ, Mrs. Alex MacLeod (Almeda) of Winfield, Ont., Mrs. C. E. J. French (Queenie) and Marjorie, both of Hamilton, Ont. Members of their families were present as were also relatives and friends of the Howlett family from many Island communities.

Everybody's Talking About 'THE OTTAWA MAN'

"It's popular in its rarest sense. It's the right play for the summer."

—Robert Blondin

BANK OF MONTREAL APPOINTMENT



FREDERICK LAMBERT REGINALD BOYNE

Appointment of Frederick Lambert as manager of the Bank of Montreal's Charlottetown branch, has been announced by Thomas R. Francis, general manager for the Atlantic provinces, in Halifax. Mr. Lambert succeeds Reginald Boyne, who has held the post since 1958, and who takes up special duties at the head office in Montreal.

Mr. Lambert joined the B. of M. at Almonte, Ont., and later served extensively at branches in Ontario and in Montreal. He served successively as accountant of two offices in the Montreal area and went to the head office in 1960.

He became manager at Kentville, N. S., in 1961 and manager in the Town of Mount Royal, Que. four years later. He also served in a supervisory capacity at the head office from 1958 until his appointment in 1962, as manager of the Newfoundland and Labrador Building branch in St. John's. He leaves that post to come to Charlottetown.