

**RURAL
CHURCHES
KINGS**

SOURIS — Bay Fortune United Church. Bay Fortune worship 9:30 a.m. Souris 11 a.m. Rev. Murray Patner, guest speaker.

MURRAY HARBOUR — Murray River United Church. Murray Harbour worship 9:30 a.m. Murray River worship 11 a.m. Little Sands worship 8 p.m. Rev. David Barwise, minister.

VALEFIELD — Orwell Head — Belle River United Churches. Minister, Rev. Graeme Frazer. 9:30 a.m. Belle River, 11:15 a.m. Orwell Head, 8 p.m. Valleyfield, memorial service, guest-preacher Rev. Dr. J.D.N. MacDonald, past president of Maritime conference.

MONTAGUE Baptist Pastorate. Sunday, Aug. 29 Rev. A.G. J. Steeves, minister. Montague: Sunday School 10 a.m. Worship 11 a.m. Murray River: Sunday School 2 p.m. Worship 8 p.m. Murray Harbor: Sunday School 2 p.m. Worship 7:30 p.m. Sturgeon: Sunday School 11 a.m. Worship 1:30 p.m.

HOLY TRINITY — Anglican Church. Georgetown. Sunday, Aug. 29 Morning Prayer 11 a.m. C.A. McMillan, student.

MONTAGUE Bible Chapel. Lord's Supper 9:30 a.m. Sunday School and Adult Bible Class 10:45 a.m. Evening Service 7:30 p.m.

MONTAGUE Pastoral Charge. United Church. 11 a.m. Trinity. Montague. 89th anniversary service. Rev. J.D. Nelson MacDonald, BA, LL.D. Special music arranged. Mrs. Russell Irving, guest soloist. 2:30 p.m. Sturgeon. Rev. R.F. Burns, minister.

DUNDAS — ANNANDALE United Baptist pastorate. Dundas Sunday School 11 a.m. Service 8 p.m. Annandale Sunday School 10 a.m. Service 11 a.m. Guest speaker, Rev. Bryon Howlett at both services. Lic. Myrtle Ingersol, pastor.

DUNDAS — GEORGETOWN Pastoral Charge, the United Church. St. David's Church. Worship 9:30 a.m., church school 10:30 a.m.; Annandale Church worship 11 a.m.; Dundas Church worship 8 a.m.; Church School 10 a.m. Guest speaker, Mr. Sandy Clark. Guest singers (at Dundas only) Brooklyn Trio and Caledonia Choir.

FREE CHURCH of Scotland. Worship at Birch Hill 11 a.m.; Belle River 3 p.m. Murray River 7:30 p.m. Mr. David Compton will conduct the services. Rev. Ewen E. MacDougall, minister.

MONTAGUE Pastoral Charge. Presbyterian Church. St. Andrew's, Cardigan church school 10:15 a.m. worship 11 a.m. St. Andrew's, Lorne Valley. Worship 2:30 p.m. St. Andrew's, Montague. Worship 7:30 p.m. Rev. Basil Lowery, minister.

QUEENS
THE PRESBYTERIAN Church. Wood Islands. Sunday, Aug. 29. Service of Worship 9:30 a.m. Sunday School 10:45 a.m. Rev. Raymond L. Gillis will conduct the service. Rev. Donald Nicholson, minister.

VERNON — POWNAL Pastoral Charge, the United Church. Minister, Rev. W.E. Grant. Orwell 9:30 a.m., Cherry Valley 11 a.m., Millview 8 p.m.

BRADALBANE Pastoral Charge, the United Church. Rose Valley 10 a.m. Bradalbane 11:30 a.m. Pleasant Valley 8 p.m. Rev. William E. Hare, BA, BD, minister.

MARGATE Pastoral Charge. Long River 10 a.m. Margate 11:30 a.m. New London 7:30 p.m. Rev. W.A. Paterson, MA, BD, minister.

CAVENDISH Pastoral Charge, the United Church. Cavendish 11 a.m. Stanley Bridge 8 p.m. Rev. Frank Styles, BA, BD, BED, minister. New Glasgow 11 a.m., North Rustico 8 p.m. Mr. Ronald Maund, student assistant.

PRESBYTERIAN CHURCH, central parish. Churchill 9:30 a.m. Worship, 10:30 a.m. Sunday School. Clyde River 10 a.m. Sunday school, 11 a.m. Worship: Gance Cove 10:30 a.m. Sunday School, 8 p.m. Worship: Nine Mile Creek Sunday School 10:00 a.m. Mr. Owen MacRae, Charlottetown, will be preaching at all services. Rev. Raymond L. Gillis, minister.

MT. STEWART — St. Peter's Bay Charge, the United Church. Mt. Stewart. Worship 11:15 a.m. Morell. Worship 9:45 a.m. St. Peter's Bay. Worship 8 p.m.

HUNTER RIVER United Church Pastoral Charge. Sunday, Aug. 29. Hunter River 10:00 a.m. North Wiltshire 11:15 a.m. Wheatley River 8 p.m. Rev. H. F. White, BEng, BD, Yarmouth, N.S. guest minister. Rev. Donald C. Powell BA, BD, minister.

MARSHFIELD — Harrington Mt. Stewart Charge, the Presbyterian Church. Sunday, Sept. 5. Mr. Hugh Lowry, Catechist. No services. Marshfield or Mt. Stewart WMS service Harrington 8 p.m.

NORTH RIVER Baptist Pastorate. Sunday, Aug. 29. Rev. T. W. Howard, minister. Worship: North River 9:30 a.m. Fairview (Continued on page 12)

CLOVER FARM



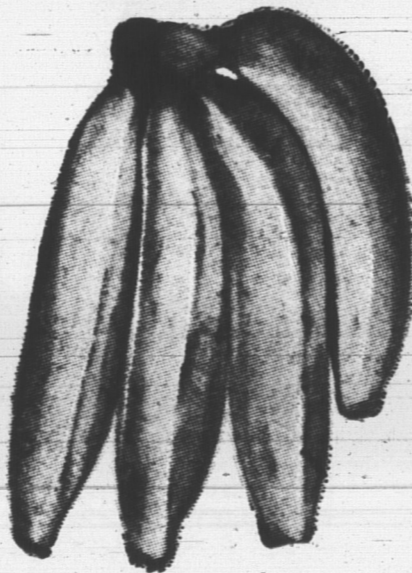
DOLLAR DAYS

PRICES EFFECTIVE TIL CLOSING TIME AUG. 28

CLOVER FARM CHOICE PEAS 6 ^{20 OZ.} TINS 1.00	HEINZ COOKED SPAGHETTI 4 ^{20 OZ.} TINS 1.00
CLOVER FARM MARGARINE 4 ^{1 LB.} PKGS. 1.00	CORDON BLEU CHICKEN 3 ^{7 OZ.} TINS 1.00
FACIAL TISSUE KLEENEX 4 ^{FLAT FOLD} PKGS. 1.00	CLOVER FARM CREAM STYLE CORN 5 ^{20 OZ.} TINS 1.00
CLOVER FARM MILK 6 ^{TALL} TINS 1.00	MARVEN'S OR CHRISTIES SODAS 3 ^{1 LB.} PKGS. 1.00
KELLOGG'S RICE KRISPIES 3 ^{9 1/2 OZ.} PKGS. 1.00	CRUSH CANNED BEVERAGES 11 ^{10 OZ.} TINS 1.00
CLOVER FARM TOMATO CATSUP 5 ^{11 OZ.} BOTS. 1.00	CLOVER FARM FIG BARS 2 ^{1 1/2 LB.} PKGS. 1.00
CLOVER FARM APPLE JUICE 6 ^{20 OZ.} TINS 1.00	CLOVER FARM (IN TOMATO SAUCE) BEANS 6 ^{20 OZ.} TINS 1.00
OLD HOMESTEAD STRAWBERRY JAM 2 ^{24 OZ.} BOTS. 1.00	

**MORE DOLLAR DAY
SPECIALS!**

MARVEN'S MIX OR MATCH COOKIES 3 ^{PKGS.} 1.00
GEISHA BABY CLAMS 3 ^{10 OZ.} TINS 1.00
HEINZ TOMATO JUICE 6 ^{20 OZ.} TINS 1.00
BREAKFAST CEREAL SHREDDIES 3 ^{12 OZ.} PKGS. 1.00
RAY-O-VAC FLASHLIGHT BATTERIES 4 ^{FOR} 1.00
TERRACE BALL POINT PENS 12 ^{FOR} 1.00



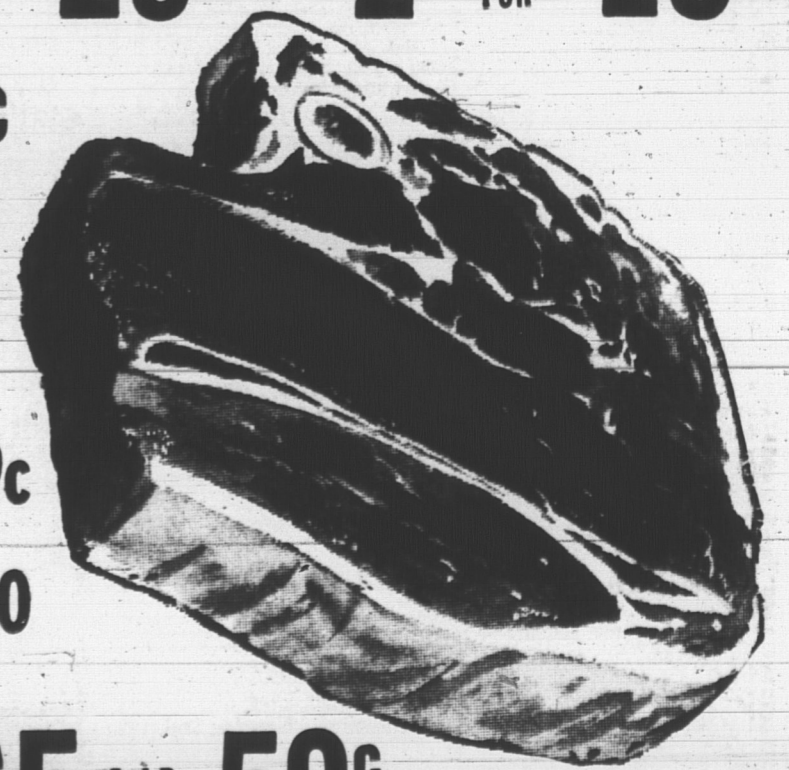
GOLDEN RIPE
BANANAS **19^c**
LB.

SWEET JUICY
ORANGES 5 **79^c**
LBS.

GOVERNMENT INSPECTED
SHOULDER or BLADE

ROAST **49^c**
LB.

PRIME RIB ROAST LB. 63c	FRESH BEEF BRISKET . . . LB. 29c
MAPLE LEAF BOLOGNA 3 ^{LBS.} 1.00	MEAT WINGS O' CHICKEN 3 ^{LBS.} 1.00



ROUND OR WING **STEAK** LB. **69^c** **T-BONE OR SIRLOIN** **STEAK** LB. **79^c** **SUPERIOR PORK** **SAUSAGE** 1 LB. PKG. **59^c**

CHUN KING FEATURES

Chow Mein Mix ^{16 OZ.} PKG. 65c
Noodles ^{5 OZ.} TIN 31c
Soya Sauce ^{5 OZ.} BOT. 19c
JENOS Pizza Mix ^{1 LB.} ^{13 OZ.} PKG. 79c

For Whiter Washes
TIDE **39^c**
LARGE SIZE
Lowney's
BRIDGE MIX **43^c**
13 OZ. PKG.

FROZEN FOODS
EAST PACK
Haddock Fillets **45^c**
1 LB. PKG.
SUNKIST
LEMONADE **29^c**
2 ^{6 OZ.} TINS

KING COLE

TEA BAGS ⁶⁰ GAUZE 89^c
HEINZ WHITE VINEGAR ^{GAL.} JAR 89^c
SUCCESS HEAVY DUTY LIQUID WAX ^{PINT} TIN 59^c