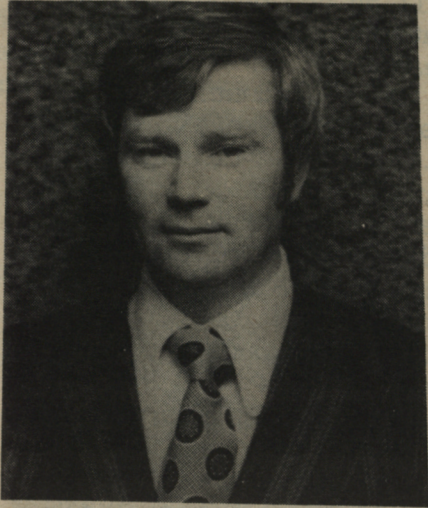


AFTER THE FACT

from Topics
The University has withdrawn its institutional



Jim Griffith

support for the Canadian University Services Overseas (CUSO) and Jim Griffith of the Department of Student Services (UPEI) has resigned as a member of the CUSO Board of Directors.

Mr. Griffith said the move comes about as the result of a January meeting of the CUSO Board during which a strong split developed over personnel hiring policies and the Executive Director of CUSO, Robin Wilson, was fired.

The events of this meeting precipitated a meeting of

the Atlantic Regional Executive Committee of CUSO. Mr. Griffith, also a member of the Atlantic Committee, said "we passed two motions: 1) to urge the post-secondary educational institutions in the Atlantic Provinces to withdraw institutional support from CUSO, and 2) to dissolve the Atlantic Regional Executive Committee."

Mr. Griffith said the

withdrawal of support, the dissolution of the Atlantic Committee and the "disassociation from CUSO" voices our disapproval with the internal friction that is in

CUSO as well as between CUSO and its French counterpart, SUCO. It also shows our objection to the manner

in which the CUSO Board of Directors abruptly dismissed the CUSO Executive Director."

\$1500 IN PRIZES AND AWARDS

Future science show

Junior and Senior High School students from across the province will be converging at the University on April 5 and 6 as they participate in the Third Annual PEI Science Fair, sponsored by UPEI.

Projects and displays will be in competition for the \$1500 in prizes and awards.

The Fair provides an opportunity for students to express their creativity and originality with projects of their choice, as well as offering a chance to discuss and exchange ideas with students from other schools and visitors to the Fair.

Chairman of the Fair this year is Professor Don MacEwen, Chairman of the Department of Engineering. He has distributed information packages containing rules and regulations as well as helpful suggestions to the Science teachers in all Island High Schools. Students wishing to enter the Fair should contact their Science teachers for information and guidance.

On Thursday, April 5, the students will set up their displays in the Student Lounge of the Robertson Library. Judging will take place on Friday morning, April 6. The public is welcome to visit the Fair from 9 a.m. to 5 p.m. on Friday.

The entries will be judged on scientific thought, skill, originality, dramatic value and the written report accompanying each project. Projects using live vertebrate animals are not permitted in the Fair.

The choice of subject matter for display is the decision of the two-member student teams entering. Projects in the past have covered a close examination of such commonplace things as soap bubbles to the sophisticated study of microwaves.



Page 1 Lounge



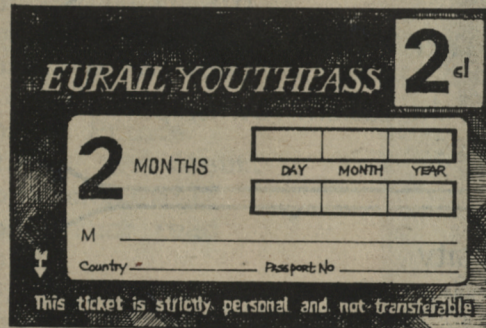
Island's Only Piano Bar

*Come in
after the game and relax,
enjoy yourself
Gather around & sing your
old favorites.*

**The
Rodd Motor
Inn**

Call 894-8586

Take advantage of your youth



Take off and explore the Europe you long to see. Come and go as you please through 15 countries of Western Europe with a EURAIL YOUTHPASS - two months unlimited 2nd class train travel for anyone under age 26.

Savour the adventure of roaming the continent with perfect freedom to set your own pace, and write your own ticket. Sit back and see more of what you came for - the countryside, the culture, the history and the people - from city centre to city centre, in comfort, on time, and inexpensively. \$312 gives you unlimited mileage for two months, plus access to free or reduced fares on many ferries, steamers and buses all across Europe. You can't buy a EURAIL YOUTHPASS in Europe; you must buy it here before you go.

EURAIL YOUTHPASS - take advantage of a bargain while you're still in the running.

(Price quoted is Canadian funds and subject to change without notice.)

Ask your travel agent for details or write: EURAILPASS, Box 2199, Toronto, Ontario, M5W 1H1.

Name: _____
 Address: _____
 City: _____ Prov: _____ P.C.: _____

EURAILPASS

See Europe for Less.

AUSTRIA • BELGIUM • DENMARK • FINLAND • FRANCE • GERMANY • GREECE • HOLLAND • ITALY • LUXEMBOURG
 NORWAY • PORTUGAL • SPAIN • SWEDEN • SWITZERLAND