

NEW CN EXPRESS-FREIGHT DEPOT

CN brings improved facilities to province

Canadian National provides a vital link between Prince Edward Island and the remainder of Canada. When the warm weather of summer is gone and the tourists with it, CN continues to provide important services to Prince Edward Island, bringing in the consumer commodities required by the island residents and taking-out the products of the province's industries, farms and fishing plants. Canadian National's faith in the growth and development of Prince Edward Island was emphasized in 1964 with the opening of a new express freight shed at Charlottetown in the renovation of part of Charlottetown station; and in the expansion of Canadian National Telecommunications facilities and services to the province. Express freight—a combination of express and less-than-carload service—is a relatively new but fast-growing facet of CN's multiple operations across the country.

The new, express-freight shed in Charlottetown, which went into operation late in 1964, enabled CN to put into operation the new methods which had been evolved to handle express freight with greater speed and efficiency. The building was designed with these aims in mind and dealing with the rapidly increasing flow of this traffic through Charlottetown. Built of precast blocks, the new 190-foot long building is bright and airy and is heated for winter operation. **LIVE LOADING** One of the new concepts in handling express freight traffic which has been introduced at Charlottetown is "live loading." All shipments are unloaded directly from car or truck to four-wheel dock carts. The shipments remain on these dock carts during the time they are in the freight shed. This allows the freight to be moved about easily from truck to boxcar and eliminates further handling. The dock carts were built

specifically for Canadian National to a light-weight design developed by railway personnel. Among other ultra-modern railroading techniques in operation at the new express freight terminal is a sophisticated communications system. This speeds up the answering of customers calls and enables instructions to be passed on quickly. Supervisors are able to page any employees in the building through a loudspeaker system and they are able to reply through talk-back units installed at locations throughout the terminal. Adjustable ramps at the loading docks also help to speed up the loading and unloading procedure, making it possible for the dock carts to be wheeled in and out of trucks at any height. Canadian National's old freight shed, a relic of the days of the Prince Edward Island Railway, is scheduled for early demolition to make room for further expansion of trackage at the terminal. This will allow the railway

to marshal longer freight trains more efficiently. The freight shed and other improvements to CN facilities in Charlottetown are all part of the railway's long term plan to remove outdated and outmoded facilities in the continuing effort to improve services. In a province where the co-ordination of truck and train has become an increasingly important factor in transportation, Canadian National strives to provide the best possible service to meet its customers' needs and provide for further development. The railway has introduced daily highway truck service between the mainland, Charlottetown and Summerside. This truck service has helped speed up the handling of certain express freight shipments to and from Prince Edward Island. Canadian National is a vital factor in the province's economy. The railway offers incentive rates for farmers in shipping their potato crop to markets. With the failure of the United States potato crop, boosting prices across the country, Island farmers shipped more of their crop to the major Canadian

markets in the past few months than in the same period last year. CN made special efforts to provide for the unexpected heavy demand for refers, in spite of ice in the strait and other winter transportation difficulties. There are new developments in the frozen food industry and Prince Edward Island producers are anxious to stay in the forefront of the industry's advance. Canadian National is anxious to do its part and the railway has been experimenting with new and more diversified types of equipment to provide its customers with the right transportation for their particular product. **TELECOMMUNICATION** Canadian National Telecommunications' links with P.E.I. are also important. The CNT system provides P.E.I. with all the latest innovations in telecommunications, including Telex service, which can link Island businesses with firms throughout Canada and around the world. Demand for the CN-CP Telex service resulted during 1964 in an expansion of the facilities which serve the province at Charlottetown. A separate exchange was established with

twice the capacity of the previous one. Canadian National Telecommunications completely modernized the expanded exchange, equipping it with the latest equipment in the field of direct, point-to-point written communications. The Charlottetown exchange puts P.E.I. businessmen into direct contact with firms connected with the CN-CP Telex system which is part of a world-wide network of over 170,000 subscribers. Of this total, more than 6,000 are Canadian in such widely separated centres as Vancouver, St. John's Nfld., Edmonton and Charlottetown. During the visit of the Queen and the Duke of Edinburgh to Charlottetown in October, the world's press filed a total of 158,790 words of coverage of the visit via Canadian National Telecommunications' facilities to all parts of the world. Busy CNT operators punched out a total of 66,000 on the final day of the visit—the largest file ever handled in one day in the Maritimes. Facilities were also flooded with business for the Canadian Press and other news media transmitting wirephotos round the world. The nearly 160,000 words hand-

led during the visit of the Royal Couple equated with a total of 15,000 words during a P.E.I. visit. **Veterans rejoined militia** Although the first reaction of many when World War Two ended was thankfulness it was over and nearly everyone was in a hurry to get back in civies, a longing for the old way of life was not long in coming. Before many months had passed increasing numbers of veterans were getting back in uniform with one of the peacetime units in Charlottetown. Soon the camaraderie of wartime saw a surging interest apparent and local military units were in full swing. At that time the city had the 17th Recce, 28th Light Ack. Ack, Signals and Medics, Officers

and NCO's Messes were established along with the Men's Messes to provide after-crewing social activities. Training itself proceeded at a fast pace and soon countless youths were enrolled in the units replacing veterans who began to drop out as age or waning interest dictated. But over the years technological advances in bomb techniques made the standard-type soldier almost as obsolete as a muzzle-loader and training changed to more of a civil defence brand. **Invasion sparked volunteers** Prince Edward Island has seen a variety of defense forces from the earliest days of French and English Imperial troops to a handful of Charlottetown Volunteers back 100 years ago. The Volunteers came into be-

ing due to worry over the island being left with no troops at all to guard against the expected depredations of the Yankees—who had invaded the colony 100 years before that and took away the Great Seal and a couple of government officials. George Washington returned the officials with apologies but the Yankees kept the seal with no apologies. One company of volunteers grew into several and before long artillery entered the picture. The latter years of the 19th century saw Islanders take pride in their batteries and this carried well over the present century. Artillerymen from here captured top prizes in competition with the Empire's best and many times headed all Canadian gunners. An example of their tremendous ability was seen in the Second World War when Brig. G. K. Peake caught in a jam converted his light ack ack artillery into a ground force weapon and almost completely demoralized the enemy attack.

S. R. Johnston Ltd.

30 Years of Dependable SERVICE

to Prince Edward Island Car Buyers



The automobile dealer who wants to be in business 20 years from today, gives high emphasis to quality.

Quality is the products he sells—quality in the workmanship of every repair job—and quality of service by a competent staff which turns customers into friends.

Here at S. R. Johnston Ltd., quality has been our watchword. We have tried to maintain the very highest standards in all departments. The measure of our success is evidence by the fact 1965 is proving to be one of the most successful in our history.

Fairest in Sales . . . Finest in Service

S. R. JOHNSTON Limited

ST. PETERS RD.

CHARLOTTETOWN



CREDIT BUYING FOR THE WHOLE FAMILY IS EASIER AT C.T.C.
Enjoy the satisfaction of using quality merchandise as you pay for it.

DEDUCT AN EXTRA DISCOUNT From All Prices Shown

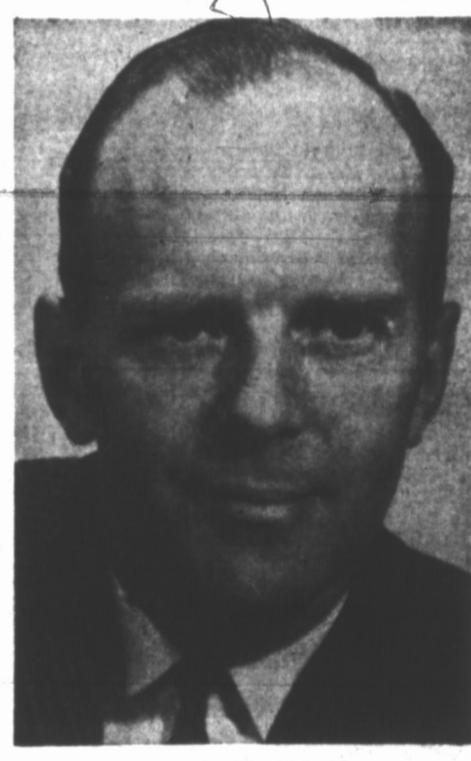
3% Discount Notes
are yours on all purchases of 79c or more (labor excluded). Spend Discount Notes as Money—at Canadian Tire.

A FAMILIAR SIGN FOR CAR OWNERS

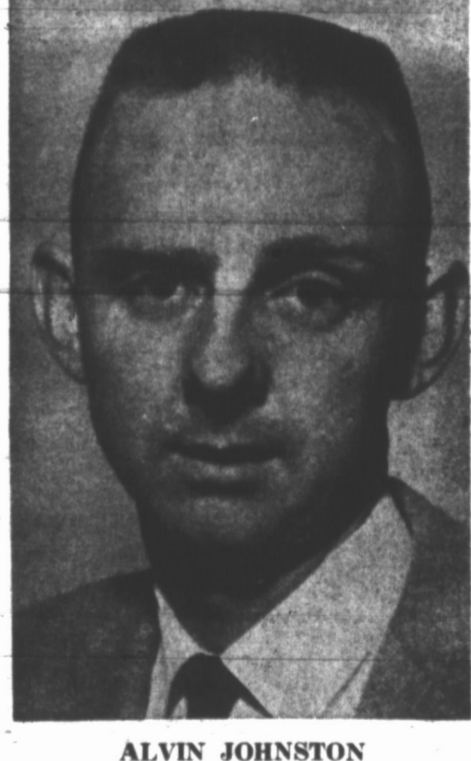
Sporting Goods AND Hardware Shoppers

Our Policy—To give the most courteous and personal attention and friendly service while visiting our store. To earn your confidence by providing you with only the highest quality merchandise. To prove to you that dollar for dollar, Canadian Tire offer the finest values. To save you money, when buying appliances, sporting goods or replacement parts for the family car.

At Canadian Tire you can use your credit for whatever you need . . . tires, batteries, car accessories and radios, sporting goods, power tools . . . even a bicycle for your youngster. Almost anything you and your family have wanted for so long can be yours, with a convenient Budget Plan tailored to suit your needs. See your C.T.C. Dealer today.



W. A. MacRAE
PRESIDENT



ALVIN JOHNSTON
STORE MANAGER

Canadian Tire features top quality merchandise at fair prices. Our prices are in line with your budget and our merchandise is of the highest quality.

Each day better products are being manufactured and Canadian Tire Stores are one of the first to carry these "Tested Proven Products" as in keeping with our policy of better products at lowest possible prices.

Our store includes many departments to make shopping problems easy for the people of Prince Edward Island. You will find most anything in our store from Moto-Master car batteries to plumbing supplies. We feature a large Sporting Goods Department . . . Lines such as boating supplies, bicycles, hockey equipment, skiing equipment and many other phases of sporting goods. Our Parts Department stocks all the necessary parts for most popular cars and they carry our guarantee.



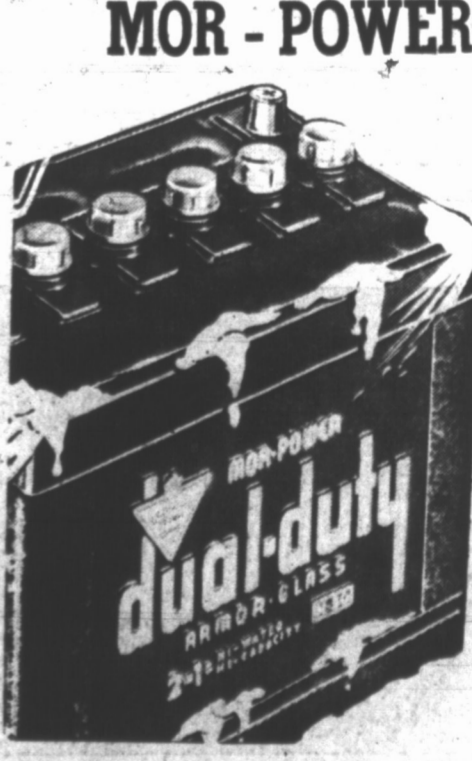
SUPER - LASTIC TIRES

P.E.I. residents over the years have made CTC their headquarters for Tires for all their needs. Truckers use Super Lastic Tires, Farmers shop CTC for tractor and implement tires, plus every Islander is aware of the great buys in passenger tire needs.



ONE COAT DOES THE WORK OF TWO WITH SUPER - LASTIC PAINTS

Make your home better looking inside and out this year. It's easy and costs less than ever before. With Super Lastic Paints. Tremendous hiding qualities give lasting beauty, durability and weather-proof protection.



MOR - POWER DUAL DUTY BATTERIES

dual-duty has everything to meet any emergency. Three great batteries, Hi-Water, Armor-Glass and Hi-Capacity, combine in one super-performer — DualDuty. It's got everything to meet any emergency. It's power-sealed of course, to ensure full, factory-fresh power.

WITH TRADE-IN

14.95

AND UP

CANADIAN TIRE ASSOCIATE STORE
STEWART and MacRAE
Queen St. Dial 4-8569 Ch'town