

**Secretary's Report
Royal Edward Chapter**

The following is the secretary's report of the Royal Edward Chapter of the I.O.E. as read by Mrs. William Massey at the annual meeting, held recently at the Charlottetown Hotel:

"This year 'Royal Edward' Chapter celebrates its 50th birthday, and we as members can feel justly proud of the work accomplished during the last year of its first half-century.

"We have a membership of seventy-two. During the year four executive meetings were held, and eight regular meetings with average attendance of twenty. Our annual meeting was held in February at the Charlottetown Hotel, preceded by a luncheon; March and April meetings took place in the ladies' lounge of the Canadian Legion building; June meeting was held at the summer residence of our Regent, Mrs. J. A. Lawson, Inkerman, where we entertained members from the other chapters who with us heard our Regent's excellent report of the annual national meeting held in Montreal on May 26th-28th. During the year we regretfully accepted the resignation of one of our valued members, and welcomed four new members.

"A change in the office of Lieutenant-Governor of our Province necessarily made a change in the office of our honorary vice-president. While we were sorry to lose Mrs. Bernard, who entertained us at Government House on two occasions during her term, 'Royal Edward' chapter was honoured, upon the appointment of a new Lieutenant-Governor, to have one of our members fill this high office. When Mrs. T. W. L. Prowse resigned as 2nd Vice-Regent to become our honorary vice-president, Miss Mary Haszard was elected to that office.

Summary of Activities

"The conveners of the various committees will give detailed reports of their work, therefore, I will give only a brief summary of the general activities during the year: Money-raising projects consisted of a bridge held in the Y.M.C.A. in April, which proved a most enjoyable function socially and financially; our annual Rose Day sale was held on May 13th; on May 27th, in conjunction with the other two chapters, we responded to an appeal to sponsor a tag day for the Manitoba Relief Fund—to both these sales the citizens of Charlottetown gave generously. Our four Prince Edward Island chapters had the honour of displaying Queen Mary's carpet in the Confederation Chamber on November 9th-10th. Mrs. Drope, 1st vice president of our National Chapter, accompanied the carpet on its tour, and a tea was held in the Chapter Rooms for her and the visiting Summerside members. The carpet evoked great interest from old and young who felt that a few minutes were not enough to see its intricate design and beauty.

"The proceeds from this exhibition were forwarded to the Queen Mary's Fund towards payment of the carpet. Besides the hundreds who paid admission, approximately 2,000 school children, accompanied by their teachers, were admitted free.

"The Chapter's contributions for National work included: Bales of clothing shipped to hospitals overseas—this year's shipments almost tripled that of the previous year; the increase largely due to our energetic sewing convener, Mrs. Ellen Campbell; history prizes to Grades IX and X in our city schools; a donation to Musical Festival; a donation to the Charlottetown fund for the Manitoba Relief Campaign; a scholarship to Prince of Wales College; the sponsoring of a student for business training at Union Commercial College; the adoption of a child under the Canadian Save the Children Fund; a wreath placed at the Cenotaph on Remembrance Day; fruit and confectionery given children of our new Canadians at their Christmas party, at which our Chapter was represented by three members; money for libraries in city schools; the purchase of T. B. seals; magazine subscriptions for the veterans' wing of the P. E. I. Hospital, also playing cards, card table, mirrors, etc., as well as many used books and magazines; magazines and books to H.M.C.S. 'Queen Charlotte', Beech Grove Provincial Infirmary and Falconwood Hospital; mitts to the Charlottetown Free Dispensary.

"A number of our members visited Sunset Lodge on May 29th, treated the ladies to ice cream and cake, and presented the matron with a lovely afghan.

"At one of our sewing meetings in September we were privileged to have as guest speaker Mrs. Siltoe of the W. V. S., London, England, who spoke on the distribution of food and supplies during wartime in England.

"I wish to express my appreciation to the officers and members for their cooperation during the year, especially the assistant secretary, Mrs. E. T. MacLeod, who is not asked for a report of her stewardship. Her office is a busy one which entails the addressing of over seventy cards each month, making many phone calls to our councillors and members in regard to executive meetings and other matters, and attending to many details which make our meetings function smoothly."

"On behalf of the Chapter, I would like to extend our appreciation to the Premier of our Province, our Mayor and City Council, our two local newspapers, Radio Station C.F.C.Y. and the public generally, who cooperated in all our projects and supported us during the year.

"To our Regent, who has consented to remain in office for another year, and her incoming executive, may I extend my best wishes for the year which lies ahead.

"Respectfully submitted,
Marion G. Massey, Secretary.

HISTORIC GARDENS

The gardens at Hampton Court Palace, England, were developed by Cardinal Wolsey from monastery gardens.

Householders Attention! HOLMAN'S Stages A February Feature In Superior Quality Merchandise

Our Guarantee
ALL MERCHANDISE
Covered Not Only By The
Reliable, Well Known
Manufacturer's Guarantee
But Also By
HOLMAN GUARANTEE
of **SATISFACTION**

ISLANDERS WANT THE BEST

So -- We Bring Islanders The BEST

For generations Holman's has supplied Islanders with the BEST in Merchandise — at moderate prices. ... NOT unknown inferior brands — that sell for as much if not more than the "BEST". At Holman's you'll find Famous Name Brands. ... Time tested and proven Best for Islanders and Island conditions. Buy the "BEST" — other than the "Best" is not good enough for Islanders!

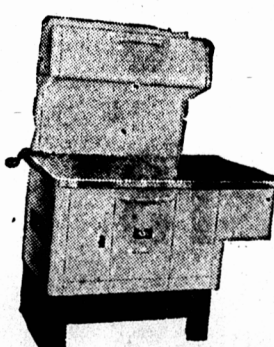
Remember-- We're Islanders Too!

Saturday, February 17th to Saturday, February 24th Inc.

NOW IS THE TIME TO BUY

In Ranges --
It's Enterprise

Canada's Finest and Most Beautiful



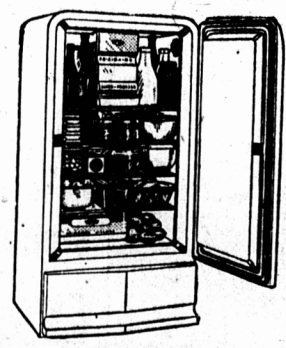
- More Enterprise in use than all others.
- Modern style with surpassing beauty.
- Beautiful flush type High Closets.
- Large Oven, bakes perfectly.
- Properly designed Firebox.
- Burns coal or wood.
- Heavy ventilated Linings for long life.
- Polished steel Top.
- Chassis is cast iron, reinforced.

FEATURE VALUE
ENTERPRISE RANGE—
with High Closet and
Reservoir—price **123.00**

**PAY 20% Down For Immediate Delivery
or 5.00 Deposit on The Lay-A-Way Plan**

In Refrigerators --
**GENERAL ELECTRIC
KELVINATOR** MADE BY—
FRIGIDAIRE MADE BY
NASH
GENERAL MOTORS

Refrigerators are used in Winter as well as Summer. We have limited quantities of the Best Electric Refrigerators, manufactured by reliable firms. If you want to be sure of your Electric Refrigerator — COME IN NOW.



ALL MODERN SIZES AND DESIGNS
NOW ON DISPLAY.

Prices Start **299.50**
At

**PAY 20% Down For Immediate Delivery
or 10.00 Deposit on The Lay-A-Way Plan**

OUR TERMS

In Accordance With Government Regulations

20% DOWN

ON THE
HOLMAN HOME PLAN

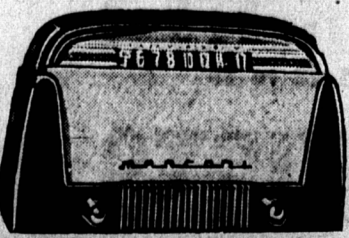
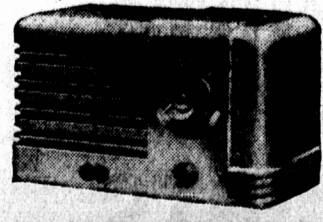
For Immediate Delivery
Up To 18 Months To Pay Balance

— OR —
Use LAY-A-WAY Plan

- RADIOS—1.00 Deposit**
- RANGES—5.00 Deposit**
- WASHERS—5.00 Deposit**
- REFRIGERATORS—10.00 Deposit**

Pay Weekly or Monthly until Total 20% has been paid—Then Take Delivery.

In Radios --- It's
RCA VICTOR and MARCONI

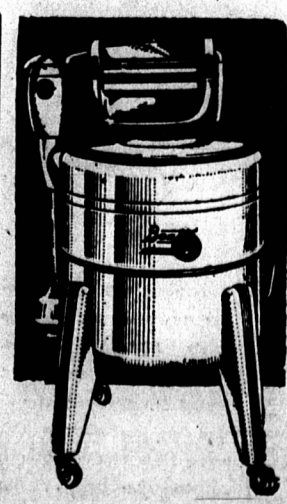


Insist on these Names, so long known to Islanders for the Best in Radio Entertainment.

- VICTOR VALUES**
- NIPPER — 5 Tube Electric Radio, priced 24.50**
 - LITTLE MASTER — 5 Tube Electric Radio, priced 42.00**
 - BT502 — 5 Tube Battery Radio, priced less batteries 39.95**

- MARCONI VALUES**
- MODEL 200 — 5 Tube Electric Radio, priced 24.95**
 - MODEL 200 — 5 Tube Electric Radio, priced 44.50**
 - MODEL 300 — 5 Tube Battery Radio, priced less batteries 31.95**

**20% Down Delivers
or
1.00 Deposit on The
Lay-A-Way Plan**



In Washers---It's **BEATTY**

- The Island's most popular Washer.
- Many in use over 20 years.
- Famous Beatty mechanism runs in oil.
- Mechanism never wears out — can always be repaired.
- Full sized Tub for large or small washings.
- Strong Wringer with balloon rolls.
- Chrome Clothes Guides.
- Outside Lever Agitator Control.
- Beautiful white enamel finish.

FEATURE VALUE
BEATTY MODELS 19A and 22B
at less than the price of an ordinary Washer **129.50**

20% Down Delivers — or 5.00 Deposit on The Lay-A-Way

HOLMAN'S **2 BIG STORES**
SUMMERSIDE & CHARLOTTETOWN