

Questions Spark Discussion At Local Teachers Workshop

SOURIS — Twenty-seven teachers of Souris local met Nov. 13 at Souris High School, to hold another in a series of workshops. The president Daniel MacDonald mentioned a Teacher's Federation program which was to be held in Charlottetown and a delegate was appointed to attend it. The program, prepared by Mervin MacInnis, Miss Hilda Keays and Mrs. Hilda MacDonald proved to be an interesting one. The following questions brought much lively discussion and various opinions from the teachers.

Question: Can you give examples of how parents' attitudes to teachers in general or to one teacher in particular make it difficult for a child to learn effectively in school?

Answer: Interference with teachers by parents could and does create problems of discipline. Criticism of a teacher by parents, before pupils is a serious mistake, and it is going to make it doubly difficult for that child to learn from that teacher.

Question: "How can parents best regulate the amount of time spent on television by pupils?"

Answer: Various opinions were heard from several teachers. There are some programs that children, could look at, and others they should not be allowed to see.

Parents should be able to decide how much time children should spend watching T.V. It should also depend on how they are progressing in school. Children should be taught to plan their lives so that there may be a reasonable proportion of time for schoolwork, rest, etc. T.V. should not crowd out physical play, homework, religious and home duties.

Next on the program was a writing lesson by Mrs. Melvin MacPhee and seven pupils.

The next meeting is December 11th. Miss Eileen Gallant and Sr. St. Elizabeth Eileen were appointed on the program committee.

A vote of thanks was then extended to Mrs. Melvin MacPhee for her writing lesson, by Mervin MacInnis and seconded by Mrs. Hilda MacDonald.

Reports Heard At CWL Meeting

The regular monthly meeting of the Catholic Women's League was held recently in the K. of C. home with the president, Mrs. Edmund Gallant in the chair. There were twenty-seven members present.

Reports were read by: Miss Florence Arsenault, Mrs. George Alderson, Mrs. Elaine Gallant, Mrs. Gordon Harris, Mrs. Joseph Linkletter, Mrs. Brad LeClair.

Reports were also given by the following convenors: Mrs. Jack Wedge, membership; Mrs. Clifford Gaudet, sick; Mrs. Wilfred Perry, Guides; Mrs. Brad LeClair, press; Mrs. Ratelle, spiritual.

Mrs. Ivan Clough, reported 51 garments had been made up and given to the Red-Cross. It was decided to buy six card-tables and to hold the regular meetings on the second Wednesday of each month.

Mrs. Edmond Gallant, announced that Dr. Ray Grant will show films, of his European trip at the next meeting. Mrs. Fred Gaudet gave a report on the conference held recently in Wellington and Mrs. Joseph Linkletter reported on the Red Cross meeting held in Summerside.

Mrs. Brad LeClair was appointed convenor in connection with the first aid course being sponsored by the league.

Members were asked to answer roll call at next meeting with a gift to be given to the Welfare to be distributed at Christmas.

Tignish School Has Field Day

TIGNISH — Pupils of Tignish School held a field day recently. The activities of the day were under the direction of Gerald Keough, physical training instructor.

Mr. Keough was aided by the other teachers and the grade 12 students who awarded the ribbons and prizes.

St. Luke's AYPAs Names Officers

O'LEARY — The annual meeting of the St. Luke's branch of the Anglican Young People's Association was held in the Church hall, O'Leary corner with an attendance of 16.

The election of officers and convenors, are as follows:

Chaplain, Rev. M. P. Ness; president, Ida Wedlock; vice-president, John Wedlock, (re-elected); secretary, Betty Phillips; treasurer, Wayne Kaulbeck; wider horizons, Dianne Kaulbeck; drama, Gerald Daley; missionary projects, David Bryan; membership, Gerald Adams; projects, Verna Wedlock; publicity secretary, Adrienne Webb.

A brief discussion followed on drama. It was also announced by the president that an A.Y.P.A. deanery church service and rally would be held in St. James' Church, Port Hill.

"I MARRIED JACK BENNY"

Mary Livingstone looks back on her wacky career and reveals what the world's best loved sitcom is like at home in this week's Star Weekly.

Make This A "Chairful Christmas"

with a Gift from
BRACE
McKAY LTD
Summerside

GIGGEY'S PHARMACY
"We Treat The Sick Well"

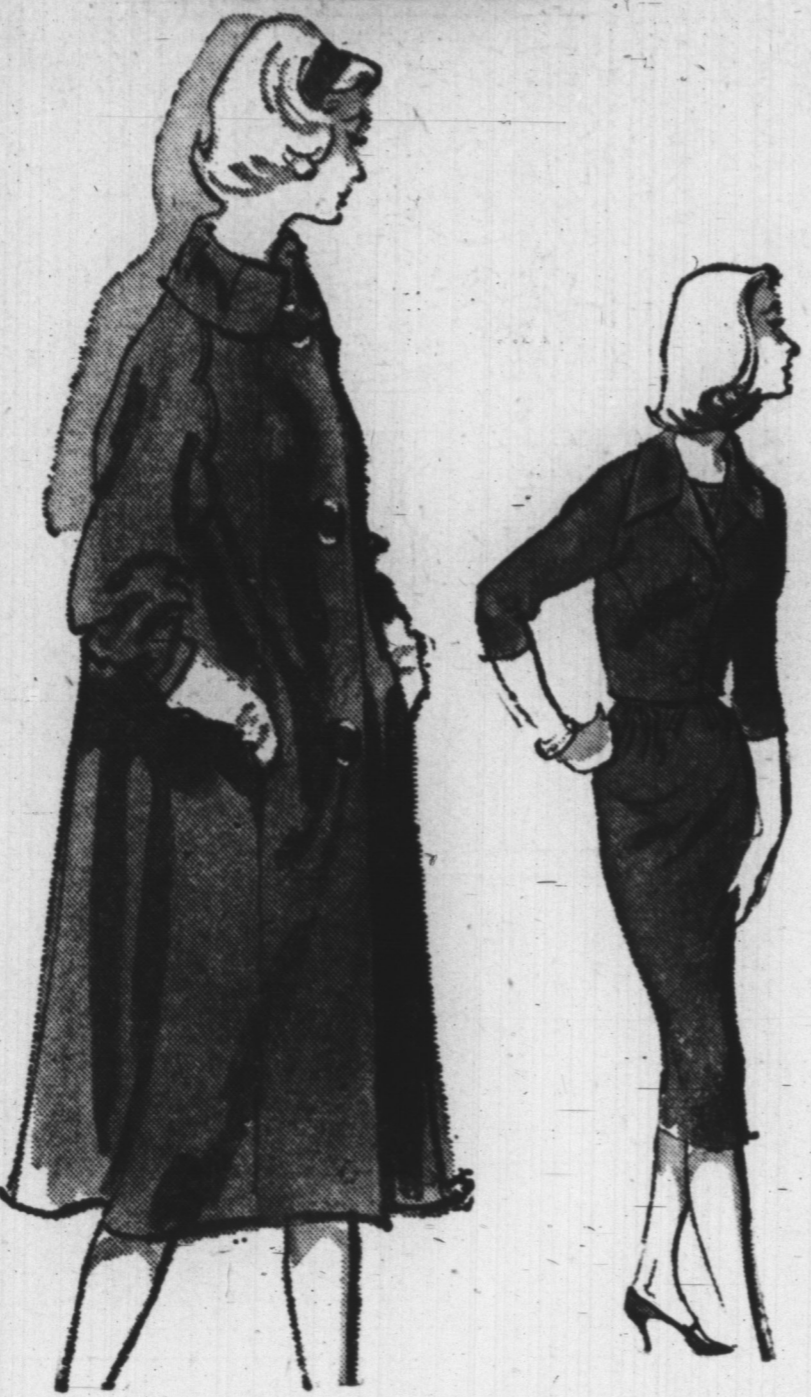
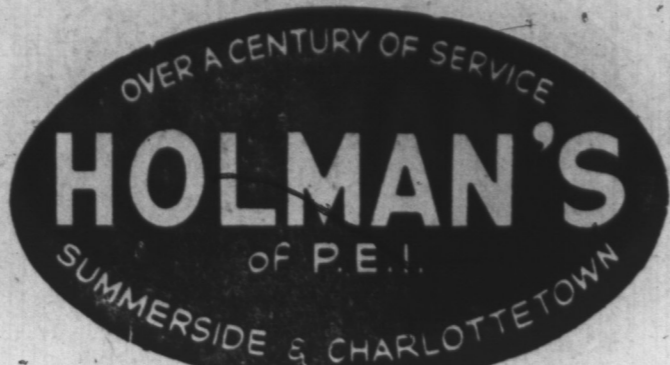
Cosmetics
By Dorothy Gray

Figurine Cologne
1.00, 1.75, 2.75, 4.50

Gift Sets
1.75, 2.00, 2.50
3.00, 3.75, 14.50

Satura
(with Vitamin A)
& Dry Skin Cream
Reg. 5.25 Spec. 2.50

GIGGEY'S PHARMACY
"We Treat The Sick Well"
163 Kent We Deliver Dial 3170



a wonderful way to say MERRY CHRISTMAS

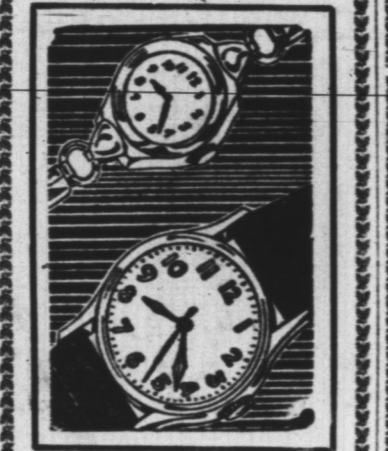
a gigantic
SALE
you
didn't expect!
a tremendous selection of luxurious . . .

coats
formerly 59.95 NOW **39.95**
formerly 69.95 NOW **49.95**
formerly 79.95 NOW **53.95**

daytime . . . afternoon . . . after five . . . for every occasion . . .
greatly reduced!
dresses
a fine assortment of styles . . . colors and fabrics . . .
sizes 8 to 20 . . .

values to 12.95 NOW **5.99**
values to 19.95 NOW **10.99**

DEVELOPING
Your Film For 20 Years
In Today - Out Tomorrow
GARNHUR PHOTO
STUDIO
135 Kent St. Charlottetown



Wellner Watches
For All Ages
Give a gift of time this Christmas. We carry such famous names as Timez, Westox, Bulova, Wittnauer and Omega.
Prices from 7.95 to 189.00
W. W. WELLNER Ltd.
Jewellers Since 1868
163 Grafton St. Dial 3788

fabulous . . .
millinery
clearance
(Summerside only)
values to 10.00
NOW **1.00**



exceptional buy
in
HANDBAGS
floridian calf . . . patent handle
and tote styles, black . . . brown
. . . tan . . . navy . . . red.
reg. 5.00
NOW **2.88**

gay . . . 100% botany wool . . .
GLOVES s.m.l.
novelty trim . . .
white . . . yellow . . . red
blue . . . green.
reg. 1.25 NOW **.89 PR.**
an original and fine gift . . .
curling gloves pure wool
leather palm and trim
ass't colors reg. 2.98 NOW **1.99 PR.**

a terrific gift . . . superbly tailored . . .
100% Wool
skirts
slim line with back pleat . . .
reg. 16.95
NOW **9.99**
a magnificent buy . . . smartly tailored
car coats
poplin . . . melton cloth . . . warm . . .
red . . . grey . . . caribbean . . . beige
. . . 10 - 14
reg. 10.95
NOW **6.66**
a handsome . . . practical
and acceptable gift . . .
umbrellas
16 rib by brophy . . .
reg. 3.98
now **1.99**

a grand bargain . . . 32a to 44c
brassieres
cotton broadcloth . . . circle stitched cup . . . elastic
insert in front . . . white . . . adjustable shoulder
straps
first quality 54 - 15 . . . dress sheer
nylons
sizes 10 - 10 1/2 - 11
only
.69 pr.

what a grand gift . . .
tartan head
scarves fringe edge
authentic b Buchanan . . .
royal and dress stew.
art. black watch . . .
H & G menzies
reg. 1.00 NOW **.77**

1.00
panties
rayon acetate . . . assorted
colors . . . S.M.L., band
and elastic leg . . .
reg. .49c
3 for 1.00

LOSE INCHES!

Your Own
Proportioned Girdle
STRIDE-EZE
Girdle
By LIDO of N. Y. C.

Save \$1
Regular **2.98**
3⁹⁸ Line **2.00 EACH**

It's Eased — Not Squeezed
• DON'T STRUGGLE
• DON'T TUG
• DON'T STRAIN
• DON'T PULL
It's Active — Not Captive

Short 4'10" to 5'
Average 5'1" to 5'5"
Tall 5'6" to 5'10"

WAIST SIZES	SMALL 24-26	MEDIUM 27-28	LARGE 29-30	X-LARGE 31-32
-------------	-------------	--------------	-------------	---------------

True Size
YOUR EXACT HEIGHT
YOUR EXACT SIZE
• SATIN FRONT PANEL
• ALL POWER-NET
• NON-ROLL WAIST BAND
It slims as it trims, as it molds
your figure at LEAST 2 SIZES

Sit, walk, stoop, stretch . . . these are the girdles that never ride up — that firm 2 1/2-inch non-roll top gently hugs your waist, and the criss-cross stitched satin 'lastex' front panel gives with every movement! Snowy white power net — now in your own personalized lengths.

Can't rise . . . even when you walk, bend, stride or stoop!

Quantity	Waist Size	Length	Price

NAME _____
ADDRESS _____
CITY _____

CHARGE C.O.D. CHECK

Order (P) Petite - 4'10" to 5'1" (A) Average - 5'2" to 5'5" (T) Tall - 5'6" to 5'10".

SIZE	SMALL	MEDIUM	LARGE	X-LARGE
WAIST	24 - 26	27 - 28	29 - 30	31 - 32
HIPS	34 - 36	37 - 38	39 - 40	41 - 42