

## Sharp jump in house building results in \$2¼ million outlay

Measured by its expanding population, now over 8,000, and construction, more than \$2¼ million, Summerside had its greatest year of progress in 1961 and has embarked on a new program that promises to set an even greater record during the coming year.

The relationship of the RCAF Station to Summerside resulted in the greatest single construction project, the start on 200 new housing units at Hillcrest Park, and the promise of another 275 units that seem likely to be commenced this year.

In addition to the construction of more than 50 private homes and 10 co-operatively built homes within Summerside, the demand for housing accommodation was supplemented by Major Inman's construction of 33 apartments in three large buildings on North Granville Street, Wallace Callbeck's construction of a six apartment building on Water Street East; and George Melkie's five-apartment building on Euston Street.

The area at the north side of Summerside is the most practical for new development, and residential, commercial, and educational property purchases in the area together with the rapid diminishment of vacant lots within the town, as well as housing construction along every road within two miles, has all but changed the appearance of Summerside within the past five years.

### NEW SCHOOL BUILT

During the past year a new 22 room elementary school was constructed on Elm Street; construction commenced this month on a new vocational school on Granville Street north; and in this area it seems probable that a new regional high school may be constructed. Further north on Granville Street a new 16 lane bowling al-

ley is nearing completion, and other projects are under consideration for this area.

A new RCMP barracks located on Central Street north was officially opened and occupied early in January 1961, and the first of the many other openings and construction projects that followed rapidly.

These included the new St. Paul's Roman Catholic Church and parochial house on Central

and Notre Dame streets, the addition of 15 additional units to the Linkletter Motel; the installation of an outdoor swimming pool and nine hole, par 3, golf course at the Garden of the Gulf Motel; a new Fina service station on Water; an extension to Queen Wharf; an addition to Amalgamated Dairies building and the opening of their new trimilk process; the arrival of the first Argus aircraft of a new

squadron that has subsequently been building steadily at RCAF Station Summerside; the start of construction on a new fire department building, and a new plant opened by modern Cash and Carry Dry Cleaners.

### ENJOY BOOM

Building contractors enjoyed a long fine summer that heard the ring of hammers and the sound of saws from daylight until dark, and although few

days were lost because of weather, they were never able to come close to catching up with the demand for their services.

Several contractors have reported they are already committed to construction projects that will provide employment for most of the current year.

In April the Summerside branch of the Canadian Legion proudly observed the first anniversary of their new Legion home which has served the Legion and the community in countless ways, and its facilities have been enjoyed by thousands of persons during their first progress-filled year.

Similarly the municipally owned auditorium and stadium have provided the facilities that have resulted in a busy year-round program.

On the municipal level the town kept pace with the civic demands that resulted in increased street paving and other municipal services to new areas of development while maintaining a municipal budget that required no increase in taxation.

### CARNIVAL HELD

Mid July climaxed a year's preparation for the sixth annual five day Lobster Carnival—the year's most gala event in Summerside—and introduced a new highlight to the carnival by the selection of a "Miss Prince Edward Island", with the honors accorded to pretty Cheryl Ozon of Summerside.

Recognition of Summerside's population growth was indicated by an increased school enrollment this year, and by the announcement this month that street mail delivery service would be inaugurated here.

During the year various political leaders visited the town, including Prime Minister, John Diefenbaker, who officiated at the opening of the new Elm Street School.

On the provincial level Premier Walter R. Shaw made political history at Summerside by holding the first provincial government executive meeting outside of Charlottetown, and continued to visit Prince County, with government members, on familiarization visits to various communities.

A Summerside Junior Chamber of Commerce organized dur-

CONTINUED ON PAGE 14.

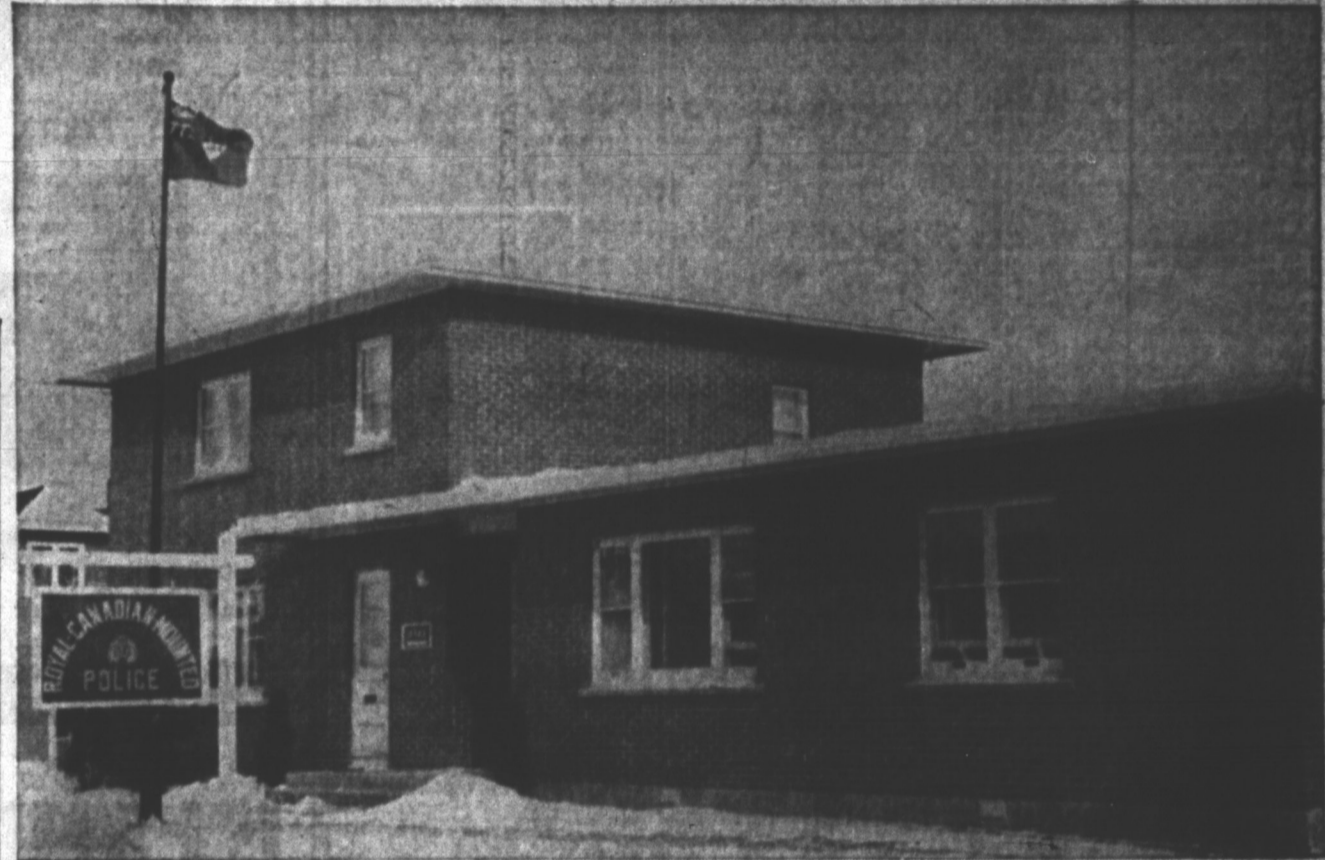


ST. PAUL'S CHURCH IS MODERN IN EVERY DETAIL

## Signs of move ahead spirit in S'side



NEW 22-ROOM SCHOOL ON ELM ST REET OPENED BY PRIME MINISTER



RCMP BARRACKS ON CENTRAL STREET WAS STARTED IN 1960 FINISHED IN '61



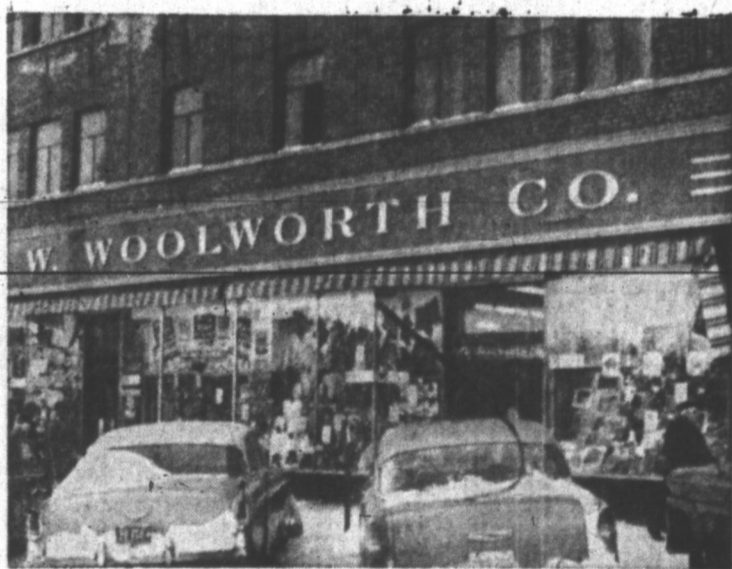
TYPICAL OF HOUSING BOOM WAS THIS HILL CREST PROJECT TO HOUSE RCAF PERSONNEL



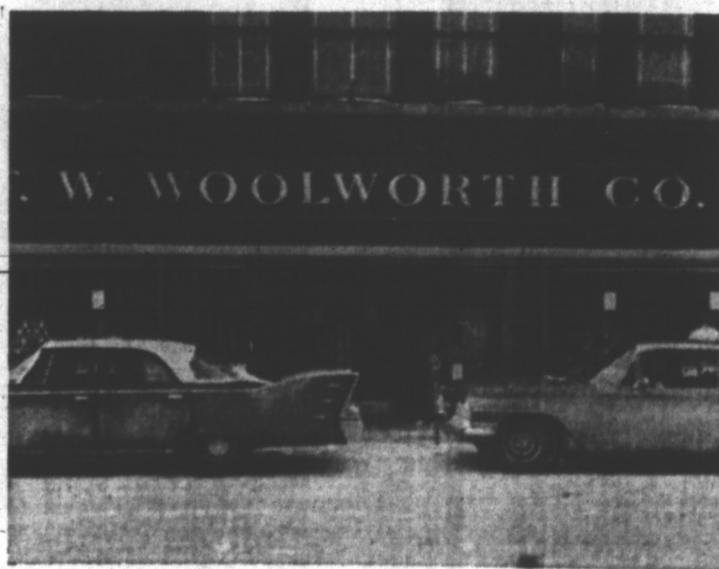
CONSTRUCTION RECENTLY STARTED ON MODERN NEW S'SIDE FIRE HALL

# WOOLWORTH'S

## ...Your Friendly Family Stores



Woolworth's of Charlottetown



Woolworth's of Summerside

The name "Woolworth's" is known in 6 countries . . . and shoppers find fair prices and good services in over 2,000 Woolworth stores. The policy of Woolworth's is to expand that service to more and more people. As an example, Woolworth's opened 33 more stores in Canada in 1961. It is clear proof the management of Woolworth's believes that Canada's economy will continue to prosper. And Woolworth's have confidence in that future right here in Prince Edward Island.

If you are not a steady Woolworth shopper, we suggest that you visit either of our bright, cheery stores and see for yourself why the name "Woolworth" is so popular with so many people.

Woolworth's . . . The Sign of Good Value