



EFFICIENCY, COURTESY IS A AIM OF POLICE DEPARTMENT

Tourist industry revenue hits record-breaking level

Estimated tourist revenue in Prince Edward Island soared past the 12-million dollar mark in 1964 to chalk up a new record when an unprecedented number of visitors came to the Island during Centennial Year.

The actual amount which is estimated 333,951 tourists spent in the province was \$12,687,430 which represented a healthy 16 per cent increase over 1963. The normal increase over the past five years was in the vicinity of 10 per cent but, because of the many added attractions and features arranged for Centennial Year, this shot up to 14 per cent last year.

From the comments of visitors who were here in 1964 and the fact that many postponed their visit fearing a lack of accommodation because of the big Centennial program, it would appear that 1965 may even surpass this mark in the volume of visitors.

The 1964 season began early and closed late. It got off to the earliest start ever with the staging of the Dominion Curling championships in March and built up to a climax in October when Queen Elizabeth II, accompanied by her husband, the Duke of Edinburgh, came to Charlottetown in early October to open the \$5,600,000 Fathers of Confederation Memorial Building.

More than 100 conventions were held on the island to make it the biggest convention year ever. Over 15,000 delegates attended these conventions which were concentrated in the spring, late summer and fall. Many national and regional organizations were among those meeting here and these delegates returned home as goodwill ambassadors

to generate future tourist business for Prince Edward Island.

Most perennial events were expanded to add a Centennial Year flavor and almost every town and village marked the occasion with a special day's celebration. Montague inaugurated a three-day Strawberry Festival, Dunvegan Miniature Castle was officially opened at Woodleigh by Dame Flora MacLeod. Old Home Week at Charlottetown was marked by the largest parade ever—the Gold Cup and Saucer Parade, and the Scottish Festival ran for a full month at North Rustico.

A highlight of Centennial Year was the re-enactment of the first meeting of the Fathers of Confederation which took place in Charlottetown the first week in September. This event offset a normal, seasonal decline in tourist business which has plagued hotels, motels and other establishments in previous years.

A summer-long program of events in the new Confederation Theatre attracted many tourists. Top Canadian talent was seen in ballet, opera, drama and music on stage during May through October. The theatre opened with the Dominion

Drama finals in May and closed with a Royal Variety concert which brought together a star cast of Canadian performers including Lorne Green who came from Hollywood to be Master of Ceremonies.

Camping once again proved popular and some 50,000 tenters crowded into the National Park Campground and another 51,000 into the 20 Provincial Parks. Some of the 23 privately-operated campgrounds also reported a brisk business.

Visitors to the P.E.I. National Park this year topped the million mark.

Two-way radios operated by the Travel Bureau speeded up reservations and proved extremely popular with tourists and visitors alike. Transportation to and from the province was improved by the addition of a new ferry at Wood Islands and a stepped-up schedule at Borden.

MAJOR PROJECTS UNDERWAY

Winter works stimulates economy of Summerside

Fifteen Winter works projects totalling a cost of \$825,396 granted by the Federal Government are seen as accelerating progress in Summerside and Prince County.

Summerside is the recipient of four major undertakings. They are erection of a home for special care on North Granville Street; re-roofing of a new barn at the raceway; the building of new town garage and the addition of eight self-contained units onto the senior Citizens Home on North Granville Street.

Located on LeFursey Avenue this latter building will cost an estimated \$80,000. The eight units will each consist of a kitchen, dining room, bedroom, bath. The building, to be completed in spring, is one storey in height and will be heated by means of a hot water furnace. Contractors are MacLean Construction Limited of Charlottetown.

This is one of several similar developments in Prince County. Kensington, Wellington, Crapaud and Louis are also sites of 'Homes'.

The Home for Special Care on the corner of Upper Granville Street and LeFursey Avenue is expected to cost over one-half million dollars. To be completed in August, the building is constructed by Williams, Murphy

and MacLeod Ltd., of Summerside. The one storey steel and brick structure will consist of three wings, containing newly designed facilities. One wing will provide medical assistance and the other will serve as dormitories.

The ground floor of the complex will contain a dining room, a denominational chapel, library, lounge rooms, television rooms, single and double suites. Storage space and hobby rooms will be located in the basement.

The rebuilding of the Summerside raceway, entailing work on a new 63 stable barn measuring 174 feet by 60 feet will cost \$20,000,000.

The new barn, destroyed by fire last Fall is being constructed of cement block and is partitioned by inner wood walls. The building has actually been completed but heating and water units haven't been installed. The water systems will be inserted in Spring.

Summerside's town garage is being built for \$53,000. Constructed by Fitzgerald and Snow of Summerside, the building will be used as a combined garage and warehouse. It is 120 feet by 40 feet in dimension and will be finished in April or May.

Sixty men are employed at the proposed National Park or

also known as Rogers Ranch. These workers are engaged in the cleaning out of the 49 acre site, located on McEwen Road in New Annan but owned by the town of Summerside.

Once the area becomes a park site, picnic facilities will be provided. Bad weather has temporarily hampered work but will begin again shortly.

Previously known as the Palmer Garage, the Summerside Boys Club has been given a new location on the corner of Cedar and Notre Dame Streets. Its former site was on Spring Street. Work on this establishment costs an estimated \$16,000.

Contractors are M.F. Schurman and the building has been ready for occupancy this month.

Fitzgerald and Snow Company are working on the town Hall. In this undertaking, a roofing job is being repaired. Old shingles are replaced by heavy asphalt ones.

Similar programs approved by winter works are starting shortly. Landscaping at Athena Regional and Prince County Vocational High Schools for soccer fields is one of the bigger projects of these not yet developed programs. This carving out of the earth for the soccer fields will be carried out by the Summerside and Rural Planning Commission. Other projects include improvements to

Holman's Wharf and the Department of Transport Wharf in Summerside for \$6,000, stringing up of .7 miles of third phase, 12 kilowatt power lines on Green Road, and for a cost of \$3,000 a storm sewer will be installed extending from L. Howard Street to the CNR drain.

Italy builds fewer cars

TURIN, Italy (Reuters)—Italy produced fewer cars in 1964 but exported more, according to figures released by the National Automobile Industry Association.

The year's production totalled 1,090,086 vehicles, a drop of 7.7 per cent compared with 1963, but exports rose to 331,125 vehicles, an increase of 8.47 per cent in 1963.

The association said the drop in production was entirely due to a slump in the home market.

TREE WIDESPREAD
Eastern hemlock grows from the Great Lakes region to the Maritimes, its distribution linked with the distribution of deer that seek the shade of these trees.

Railway business reported improved

An improvement in railway passenger services, the completion of a new dock at Borden, and a new Express-Freight shed at Charlottetown highlighted the year 1964 for the Canadian National Railways in the province.

Railway passengers to and from the Island totalled 30,430, an increase of 6,156 over 1963. During the heavy tourist season, the regular mainland passenger train was augmented by the addition of two daily bus services each way between P.E.I. and Amherst, N.S., where connections were made with the Ocean Limited and Scotian to and from Montreal and Halifax.

The new dock at Borden will enable the MV Abegweit to make more frequent trips daily. These fast trips, for motor vehicles only, will augment the regular trips of the MV Abegweit and the SS Prince Edward Island. Formerly there was only one dock at Borden and this caused delays in traffic with three boats operating. For a number of years two docks have been available at Cape Tormentine, N.B.

REST ROOMS
Rest rooms at both Borden and Tormentine are now open all night from September to April, or a little later. This convenience is greatly appreciated

by the traveling public during the winter months when only one boat is operating. The one ferry operates 24-hours a day most of the winter.

The Railway Station at Charlottetown has been modernized and repainted in attractive colors. A program along the same lines was completed at Summerside.

The pier roadway at Borden was widened and paved. Additional parking space proved a boon to both people on business and railway crews. A new building for ships stores and offices is presently under construction on the outer end of the Borden pier. It is believed a cooling room will be built to properly take care of meat and milk while waiting to be put on board ships.

NEW SHED
The new Express-Freight shed at Charlottetown was completed during Centennial year and is in operation.

There are at least 65 stations in the province from which potatoes are shipped to various parts of the North American continent and these are served by 35 station agents. The tonnage of revenue freight handled to and from the Island by rail during 1964 is reckoned at just over \$35,000.

New telephone exchange speeds communications

In the spring of 1964 an announcement was made by Island Telephone Company Limited that it was to install a switchboard to service its subscribers in Georgetown.

The installation of such an exchange in Georgetown had been approved at an earlier date by the Public Utilities Commission for the Province. The exchange is known as the Georgetown Exchange. Prior to this change the telephones in Georgetown were part of the Cardigan Exchange.

The Telephone Company installed a large number of new poles on many of the town's streets in preparation for the opening of the exchange. The exchange operates on a 24 hour basis and the operator is able to dial both Charlottetown and Montague direct.

Mrs. Edward Easton is the operator of the new exchange and is assisted by her daughter, Miss Wendy Hartman. The new switchboard was in-

stalled in the home of Mrs. Easton and the service went into operation on Sept. 1.

Many years ago there was a Georgetown Telephone Exchange, with a switchboard, and some residents recall when, in the years during and following the First World War, the exchange was operated by the family of the late B. MacLean and also by the Misses Mamie and Bessie MacDonald.

At the time the new exchange was being installed it was rumored that a public telephone booth would be placed in a central location in the town and the site suggested was near the intersection of Water and Kent Streets but to date this has not taken place. With the expected growth of the town's population this service will no doubt be made available at a future date.

EARTH'S NEIGHBOR

In the solar system, Venus is the planet closest to the earth and also most like it in size and density.



NOW!

With Halliday's Packaged Home, you get all the materials in just one order. No running out of materials, no extra trips to the mill. Here are just three. Many other Packaged Homes available.

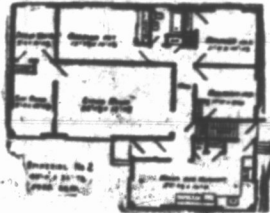
See the complete catalogue of homes and cottages. Ask for free catalogue of building bargains.



The IMPERIAL

48'0" x 36'7 1/2"

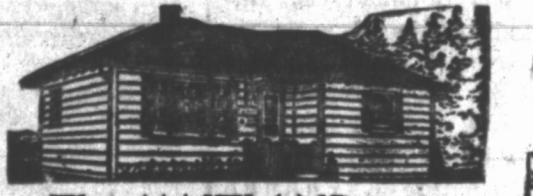
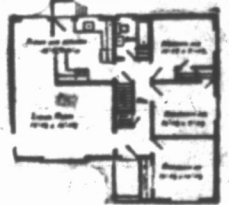
COMPLETE PACKAGE \$5626.00
READY CUT



The CORNERBROOK

37'6" x 31'6"

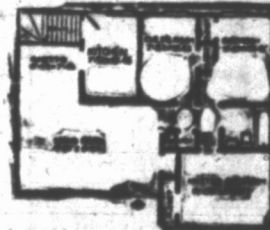
COMPLETE PACKAGE \$4000.00
READY CUT



The MAITLAND

36'0" x 26'0"

COMPLETE PACKAGE \$3624.00
READY CUT



FISHERMAN'S SKIFF

3 sizes . . . Built Up or Ready-Cut

As Low As \$28.60

An ideal boat for the angler. Well made of waterproof Douglas Fir plywood over a sound spruce frame. Designed by Naval Architect Edwin Monk. It's suitable for mounting an outboard motor.



"A" Fisherman's Skiff

Boat "A" As Illustrated
8'6" BUILT-UP \$2.35
9'6" BUILT-UP \$4.15
11'6" BUILT-UP \$5.15
11'6" BUILT-UP \$7.50



"B" Fisherman's Skiff

Boat "B" As Illustrated
7'6" BUILT-UP \$1.30
7'6" BUILT-UP \$2.40

HALLIDAY Craftsmen LIMITED

The
Town of Summerside
Welcomes
Prince Edward Island's
FIRST
INDUSTRIAL PARK



TOWN OF SUMMERSIDE