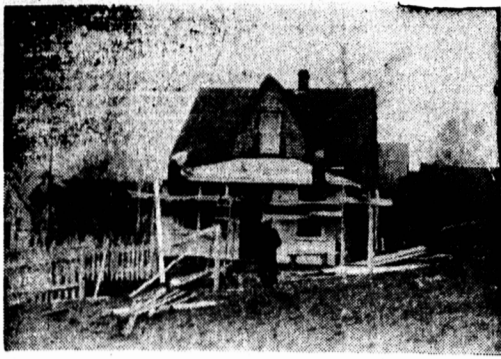


**BEFORE**



**RULES OF COMPETITION**

**Eligibility—**

- (a) HOMES and SCHOOLS — Any Rural Home or School situated outside limits of any City or Incorporated Town in Prince Edward Island shall be eligible for the competition.
- (b) Participation in last or previous year's competitions shall not bar any Home or School from the competitions.
- (c) COMMUNITIES — Any Women's Institute or other community group may enter the competition for community improvement. Entries must state items to be improved.

**Entries—**

Entries shall be mailed to the Secretary, using form provided on this page not later than May 10th, 1952.  
 Note: Your entry fee is also your annual membership fee in the Rural Beautification Society and entitles you to attend the annual banquet, and meeting of the Society.

**Judging—**

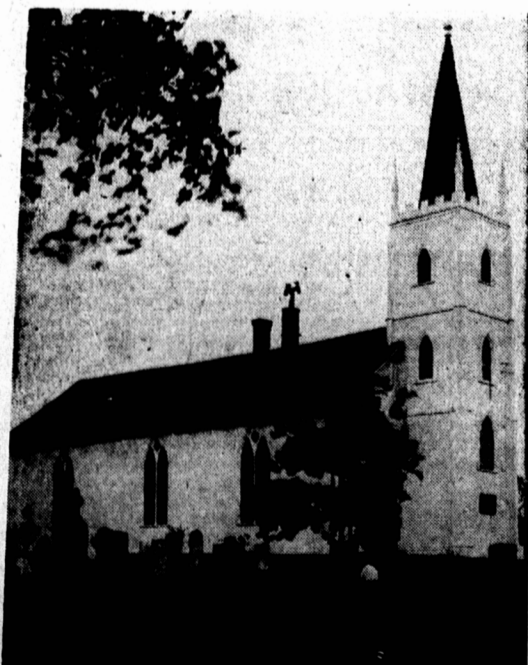
1. Initial judging will begin May 15th, 1952.
2. Final judging will commence Sept. 2, 1952.
3. Contestants must abide by the Judge's decision, which shall be final.
4. ENTRANCE FEE of \$1.00 MUST accompany all applications.
5. All work done in Spring of 1952 prior to judging will be credited to the contestant.
6. Planting of suitable Native Trees will receive the same consideration as imported ornamentals.
7. NURSERY STOCK—The Cotton Memorial Trust Nursery has available trees, shrubs, and some perennial plant stock at very reasonable prices. Write for list of materials to Mr. Robert Snazelle, The Forest Nursery, R.R. 5, Charlottetown.
8. As this is an IMPROVEMENT COMPETITION only work done to EXISTING structures, either Home or Schools, shall be scored.
9. Homes shall for the purposes of this competition include all barns and outbuildings within the precincts of the residence.
10. All TROPHIES are for Annual Competition only.
11. Snapshots of unimproved properties may be taken by contestants wishing to make an early start before first inspection. Judges normally take pictures of properties on first and final inspection.

**INFORMATION AVAILABLE TO CONTESTANTS**

A Pamphlet entitled "BEAUTIFYING THE HOME GROUNDS," which proved quite popular last year will be made available to contestants this year.  
 —Also a list of Shrubs, Trees and Flowers suited to P. E. I. and prepared by the Dominion Experimental Farm, Charlottetown, will be mailed to contestants.

**SCHOOL IMPROVEMENT SCORING BASIS**

1. EXTERIOR REPAIRS ..... 75 points
2. EXTERIOR PAINTING ..... 100 points
3. PLANTING and Care of Trees and Hedges ..... 50 points
4. PLAYGROUNDS—including levelling, seeding and provision of adequate space ..... 100 points
5. SANITATION ..... 75 points
6. FENCES ..... 50 points
7. SCHOOL SIGN BOARDS ..... 25 points
8. FLAG POLE and FLAG ..... 25 points
- Total ..... 500 points



St. John's Anglican Church, St. Eleanors  
 Winner of Community Improvement Award in 1951 for Prince County

**Rural Beautification Competitions For 1952**  
**Home, School and Community**  
**Improvement Classes**  
**\$2000—Cash Prizes—\$2000**

SPONSORED BY

**P. E. I. Rural Beautification Society**

**INTRODUCTION**

We are pleased to announce the Seventh Annual Competition of the P. E. I. Rural Beautification Society.

Again the emphasis is on improvement of the rural home and community. Additional prizes have been added to the Home Improvement Competitions, and there are greatly increased awards for community improvement.

Attention is particularly drawn to the community improvement competition this year. Really worthwhile awards are available, and Women's Institutes, Junior Farmers, and other groups are urged to get behind a clean-up and beautification programme for their communities.

The Society is grateful for a generous grant from the Provincial Department of Agriculture to carry on its work. Our thanks are also extended to the business firms of R. T. Holman Ltd., M. F. Schurman Co. Ltd., and the Island Fertilizer Company, to the Kiwanis Club of Charlottetown, to the P. E. I. Travel Bureau, the Experimental Farm and the Cotton Memorial Trust Nursery for their awards in the various competitions.



**HOME IMPROVEMENT COMPETITION**

Through the generosity of R. T. Holman Ltd., we are able this year to increase the amount of the awards in this competition. In each county the winner of the competition will receive a \$100 award donated by R. T. Holman Ltd. Remember, the more improvement your place needs the better your chances of winning.

**COMMUNITY IMPROVEMENT COMPETITION**

M. F. Schurman Co. Ltd. have donated substantial awards for the competition this year. This contest will be on a provincial basis.

Entry for the contest must be made by an organized group or groups in the community. The community unit to be improved should not be smaller than a school district, but may be larger. Entries should state what improvements are planned. Individual homes of the community may be included but there must be at least

one combined community project such as hall, cemetery, or school improvement. Prizes are offered for the best three community efforts in the province.

The inclusion of individual homes in this contest does not bar such homes from winning awards in the Home Improvement Competition.  
 1st: \$200.00 donated by M.F. Schurman Co. Ltd.  
 2nd: \$150.00 donated by M.F. Schurman Co. Ltd.  
 3rd: \$100.00 donated by M.F. Schurman Co. Ltd.

**OUTSTANDING HOME COMPETITION**

Special Trophies and Prizes are offered to the contestant in each county having the most outstanding home (including all buildings) at the time of final judging.

To enter this Competition you may not have to make any improvements; your home may have been kept up to a high standard over the years. Total points, at the time of judging

count rather than the improvement made in one season.

King's: Poole & Beer Trophy and \$25.00 prize donated by the Island Fertilizer Co.

Queen's: P. W. Turner Trophy and \$25.00 prize donated by the Island Fertilizer Co.

Prince: George Brookings Trophy and \$25.00 prize donated by the Island Fertilizer Co.

**ENTRY FORM**

**RURAL BEAUTIFICATION COMPETITIONS 1952**

IMPORTANT — ALL BLANKS MUST BE COMPLETED

1. Name of Contestant (or School or Community).....
2. Address .....
3. School District .....
4. County .....
5. If School or Community, name sponsoring body, i.e., Women's Institute, Trustees, Community Club, etc. ....
6. If School or Community, name Secretary sponsoring group.
7. Underline whatever items in the contest you wish to enter for:—  
 Home Improvement Competition, Travel Bureau Prize, Flower Gardens, Outstanding Home Competition, School Improvement, Community Improvement, Veteran's Contest.
8. Fee enclosed \$1.00 ..... (Yes or No)

Cut out this entry form — COMPLETE FULLY and mail to:—

RURAL BEAUTIFICATION SOCIETY,  
 c/o P. E. I. Libraries  
 Charlottetown

**ENTRIES CLOSE MAY 10th—MAIL YOUR ENTRY NOW**

Save this sheet for reference

**AFTER**



**HOME IMPROVEMENT SCORING BASIS**

1. REPAIRS TO, or REPLACEMENT of buildings, painting and white-washing ..... 90 points
2. PLANTING Trees, Hedges and Shrubs, etc. .... 75 points
3. REMOVAL of irreparable buildings, dead trees, weeds and rubbish ..... 50 points
4. TIDINESS ..... 50 points
5. FENCES around buildings ..... 25 points
6. LAWNS ..... 25 points
7. FLOWERS ..... 50 points
8. GENERAL IMPROVEMENT in appearance ..... 60 points
9. IMPROVEMENT in approach to Home, including improvement to gateways, care of mailbox, provision of signpost, fences along lane leading to Home ..... 50 points
10. GENERAL IMPROVEMENT in farm frontage on main road, including planting trees, removal of weeds and rubbish, backspacing and care of fences ..... 25 points
- Total ..... 500 points

**SPECIAL PRIZES**

**HOME IMPROVEMENT 1952**

1. WINNER HOME IMPROVEMENT COMPETITION—King's Co.—Silver Cup donated by the late Senator J. A. MacDonald, Cardigan.
2. WINNER OF HOME COMPETITION—Queen's Co.—Silver Cup donated by Lt.-Col. E. W. Johnstone, Kensington.
3. WINNER OF HOME COMPETITION — Prince Co.—Silver Cup, donated by the Chief Justice Hon. Thane A. Campbell, Summerside.
4. MOST IMPROVEMENT AMONG HOMES ENTERED IN PROVINCE—Silver Cup, donated by Hon. J. A. Bernard.
5. P.E.I. TRAVEL BUREAU PRIZE—BUILDINGS —For outstanding improvements in painting and repair of buildings in each County. A useful and valuable trophy will be awarded to each County winner.
6. FLOWER GARDEN PRIZES—  
 1. A special collection of Dahlias (18 varieties) is offered by the Dominion Experimental Farm, Charlottetown, to the best flower garden among contestants in each county.  
 2. A collection of tulips, daffodils, crocuses, and other flowering bulbs is offered by the Cotton Memorial Nursery for the flower garden considered as runner-up in each county.
7. SPECIAL CONTRIBUTIONS—PHOTOGRAPHIC SERVICES: The following Studios have agreed to Photograph the prize-winners in each County: King's—To be announced.  
 Queen's—Garnham's Photo Studio, Charlottetown  
 Prince—Meyers' Studio, Charlottetown

**SPECIAL PRIZES FOR VETERANS**

The Kiwanis Club of Charlottetown offers a special prize of \$50.00 to the veteran of the last war living in Queen's County making the best showing in the Home Improvement Competition.

**SCHOOL IMPROVEMENT COMPETITION**

- King's Co.: MOST IMPROVEMENT in schools entered in King's County—R. T. Holman Trophy And \$25.00 Prize donated by the Society.
- Queen's Co.: MOST IMPROVEMENT in Schools entered in Queen's County—R. T. Holman Trophy And \$25.00 Prize donated by the Society
- Prince Co.: MOST IMPROVEMENT in Schools entered in Prince County—R. T. Holman Trophy And \$25.00 Prize donated by the Society.



MacNeill's Mills (Maple Leaf) School  
 Winner of School Improvement Competition for Prince County in 1951