

"TRACTO"

Tractor parts rob of plowing match star

"Tracto," the talking robot, will be one of the highlights of the Canadian Plowing championship matches at Brudenell Park Tuesday and Wednesday. Assembled from 227 standard production tractor and implement parts used in and in conjunction with international harvester 706 tractor, two models of the eight-foot giant robot were designed and built.

Equipped with a two-way sound amplification system for conducting conversations with fair visitors, the robot also contains a motor gear reducer for oscillating his head and raising his right arm. When operating and responding to queries, Tracto's eyes light up. The electrical power is supplied through a transformer installed in the robot's stomach.

Conversation is conducted by Harvester's district office personnel hidden from view of passers-by, but advantageously located to spot interested viewers and provide them into conversation.

To give the reader some idea of Tracto's unique assemblage from the 227 tractor and implement parts, his head is comprised of 38 parts, including two distributor caps, 12 agitator assemblies, two pre-cleaner pads, two pre-cleaner assemblies, four headlights, two pistons, two complete clutch members, two piston rings, four piston pin retainers, and eight additional piston rings while his neck is comprised of two connecting rods.

Tracto's arms are made up of 26 parts, and a host of fasteners. Included among these are four disk blades, 10 pieces of neoprene hose, four mufflers, four exhaust pipes, two hydraulic oil cans, and two cans of 85-7T, a fluid.

Tracto's body has the greatest number of tractor parts, totaling 70 units. Included in this section are two each of hood assemblies, hood grilles, hood grille housing assemblies and ornaments.



WELCOME PLOWMEN!

Ever since the early pioneers broke the virgin soil of the Province, agriculture has been the life-blood of P.E.I. economy.

Cumbersome and inefficient as it was by today's standards, the plow then as now, is the primary tool of those that work the land.

It is therefore, with particular appreciation of the contribution the plow and plowmen have made that the Department of Agriculture welcomes contestants and visitors to the Canadian Plowing Championships.

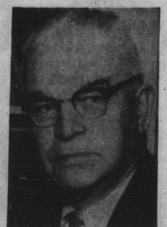
To those from other lands we extend an especially warm welcome. May your visit prove rewarding and may you take home fond recollections of your all too brief association with the farm people of Prince Edward Island.



P. E. I. DEPARTMENT of AGRICULTURE



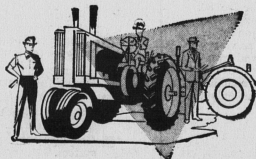
Andrew B. McRae
Minister



S. C. Wright
Deputy Minister

WELCOME CANADIAN PLOWMEN

To all Plowmen goes the best wishes of



CHANDLER BROS. LTD.

Your house and home style centre

1 Plywood Place

Charlottetown

Welcome Canadian Plowmen

CHINESE and CANADIAN FOODS



For a real taste treat while visiting P. E. Island, sample our delicious cuisine.

CHINESE FOOD OUR SPECIALTY ISLAND GRILL

192 Queen Street

Charlottetown