

CRUSHED BY CAR
BONFIELD, Ont. (CP)—Norman Gagne, three-year-old son of Mr. and Mrs. Yvon Gagne of Bonfield, was killed Sunday by a car his mother was backing from a relative's driveway. Police said the child fell from the car. He was crushed by a

front wheel after the door on his side sprung open when Mrs. Gagne turned the car sharply. Bonfield is about 20 miles east of North Bay.

HIGHEST DEATH RATE
WASHINGTON (AP)—The highest death rate since 1951

was recorded for the U.S. last year, the public health service reported Monday. The service said the provisional rate of 462 deaths per 100,000 population during 1963 reflected the serious influenza epidemic during January-April 1963.

N.B. Flaxseed Production Expected To Show Increase

By JOHN MOSHER
FREDERICTON (CP)—New Brunswick production of flaxseed, a new crop in the province, is expected to increase to 3,000 acres this year. In 1963, about 400,000 pounds harvested from 1,100 acres was worth more than \$20,000.

The seed is shipped to Montreal for processing into linseed oil. A Holland company has been reported interested in small-scale experimental growing of flax for fibres near Summerside, P.E.I.

Since 1911, western Canada has produced flaxseed ranging from 6,000,000 to 35,000,000 bushels a year. About 12 per cent of the 1963 production was exported to Japan and Europe.

New Brunswick had grown a small amount of the seed since the early 1950s, mixing it with other grains for livestock feed. A shipment to Montreal about 10 years ago proved unprofitable.

Later, Canada Linseed Oil Mills Ltd. of Montreal decided to promote flaxseed production in Quebec province. It started in the Montreal area, reached the coast after 1950 and then extended into New Brunswick.

In 1963 the provincial agriculture department and the Montreal company co-operated with several farmers in sowing 100 acres in the Woodstock, Grand Falls and St. Quentin areas of Caledon, Victoria and Restigouche counties.

Good growth encouraged the farmers to expand the acreage last year. Total acreage from Montreal eastward reached 12,000, with production of more than 300,000 bushels.

Some producers had good results but others lost their crop, especially in the poor harvesting season of 1962. Fifteen bushels or more per acre represented a good crop, worth \$3 a bushel. The expected gross return is \$30 to \$50 an acre.

A new provincial flax committee has as its chairman H. F. Stairs, director of the agriculture department's field husbandry branch.

The committee secretary, F.J. Robichaud of the husbandry branch, believes flaxseed production in New Brunswick should be limited to large acreage where land not used for

other agricultural purposes is available.

Robichaud said the linseed oil mills at Montreal are interested in buying eastern flax because they need more than 1,000,000 bushels of flaxseed for crushing every year.

"We can only support about one-quarter of that demand. Since the bulk of the flaxseed produced in the west is exported, we therefore can depend on that Montreal market for many years to come."

LIVESTOCK

TORONTO (CP)—Trading was dull. Slaughter steers sold at lower prices and hogs at steady prices at the Ontario public stockyards Monday.

Condition was only fair with yearling and cow prices steady. Veal calf prices were uneven. Hog prices were higher and sheep and lamb prices were higher.

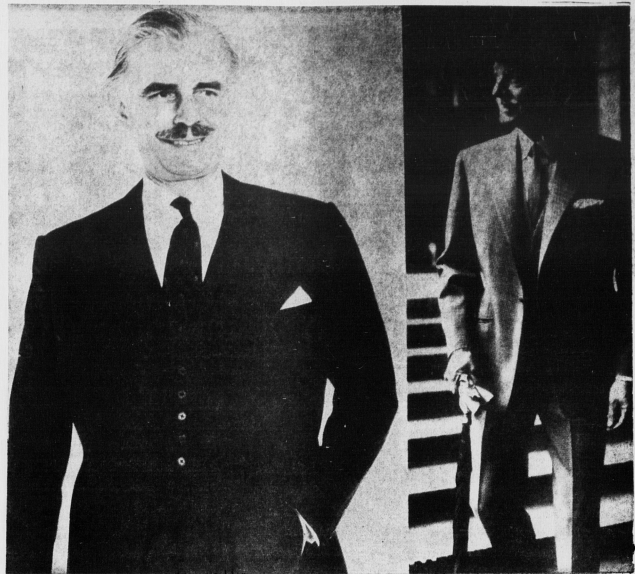
Slaughter steers 2,832. Choice steers 24-24.50 with sales to 24.90; good 22.50-23.50; medium 20-22; common 17-19; choice heifers 22-23; good 21-22; one drum 18-20; common 15-17; choice fed yearlings 24-26; good 22-24; good sows 16.50-17.50; medium 15-16; canners and cutters 11-14.50; good heavy hologna bulls 19-20; common and medium 17-19.

Replacement cattle 400: Good light steekers 22-25; medium and common 20-22.

Calves 832: Choice weaners 34-36; good 29-32; medium 24-30; common 20-24; boners 15-20.

Hogs 1,435: Grade A at Toronto 34.85-35.85 closing at 35.75; heavy sows 19.65.

Sheep and lambs 208: Good feedlot lambs 27.50-27.75 per hundredweight; common A and medium 21-25; sheep 3-10.



SUITS BY LONDON TAILORS

Here are two examples of single-breasted "tonal" suits by London tailors—the "Peacock Look" they call it in Britain. At left, a jacket and waistcoat of fine worsted with small houndstooth check black and grey worsted with the ed. At right, the jacket is in four-and-four black and white check worsted and trousers in waistcoat and trousers in black and white check worsted.

NEXT DOOR TO HENDERSON & CUDMORE, GRAFTON ST.

Fleet Street



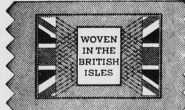
TAILORED-TO-MEASURE SUITS OF IMPORTED BRITISH WOOLLENS

Which of 284 new fabrics and patterns will you choose for your Spring Suit? ... Not just any Suit, but a Fleet Street Suit. Everything's new and lighter and brighter for Spring and we've got them all. High styled Venetian, Iridescent Herringbones, and checks. Imported Sharkskins, terylene and wool tropicals, mohairs and many more. We're ready to measure you, now. Come in for your Fleet Street Suit for Spring.

ONE PRICE \$79.95 TIP TOP tailors

WIN A FREE JAGUAR OR ONE OF 25—\$100 WARDROBES

CHOOSE FASHION BEST British Woolleens



WIN A JAGUAR XKE OR \$100 WARDROBE CERTIFICATE
 during British Woolleens Month!

Any suit, topcoat or sports jacket identified by this quality label—and purchased in our store during April—may win a handsome prize! Choose now from our wide selection and ask for details.

Suits

Iridescent Sharkskins, Herring Bone and yarn dyed worsteds are some of our British Woolleens in Suit made on the natural shoulder styling, stock price.

59.50 to 95.00

Sport Coats

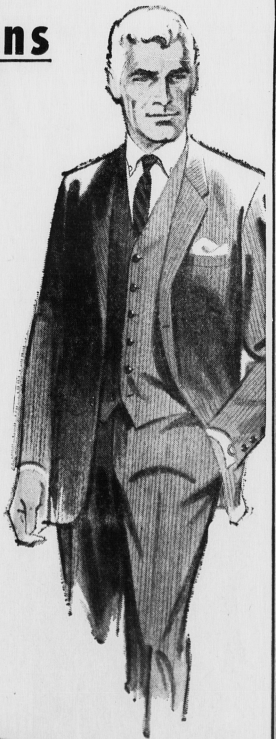
Harris Tweeds, light and dark tweeds or worsteds are shown in our stock.

29.95 to 39.95

Slacks

Worsted flannels in five fine shades by Tip Top in a perma-crease finish... other pleated or pleated styles at

17.95



MacKenzie's HOUSE OF FASHIONS
 247 Water St. Summerside



WIN THIS JAGUAR

or win one of **TWENTY-FIVE \$100 WARDROBE CERTIFICATES**



SHOP WHERE YOU SEE THIS LABEL

In leading men's stores, it identifies the finest in imported suitings. It could win you a handsome Jaguar XKE Sports Car.

MEN! HERE'S ALL YOU NEED DO TO ENTER THIS CONTEST! During April, visit any of the leading stores in this city featuring this label. You can't miss the big displays.

Choose any suit, topcoat or sports jacket bearing this label on the sleeve or in the pocket.

Attach the label to the entry form supplied and mail to the address shown.

Then sit back in style, waiting to hear that you've won a Jaguar or \$100 Wardrobe Certificate!

The **BRITISH WOOLLENS LABEL** you see above identifies woolleens and worsteds woven in Britain. For patterns, weaves and colours, British Woolleens are unrivalled the world over. Every British Woolleens suit, topcoat or sports jacket is a prize in itself.

BRITISH WOOLLENS MONTH APRIL 1st — 30th