

EYES OF THE EMPIRE ON ELIZABETH AS SHE ASSUMES SOVEREIGN'S ROLE



Britain and the Commonwealth mourn their beloved King whose devotion to duty shortened his life.



Three-year-old Prince Charles, heir to the Throne.



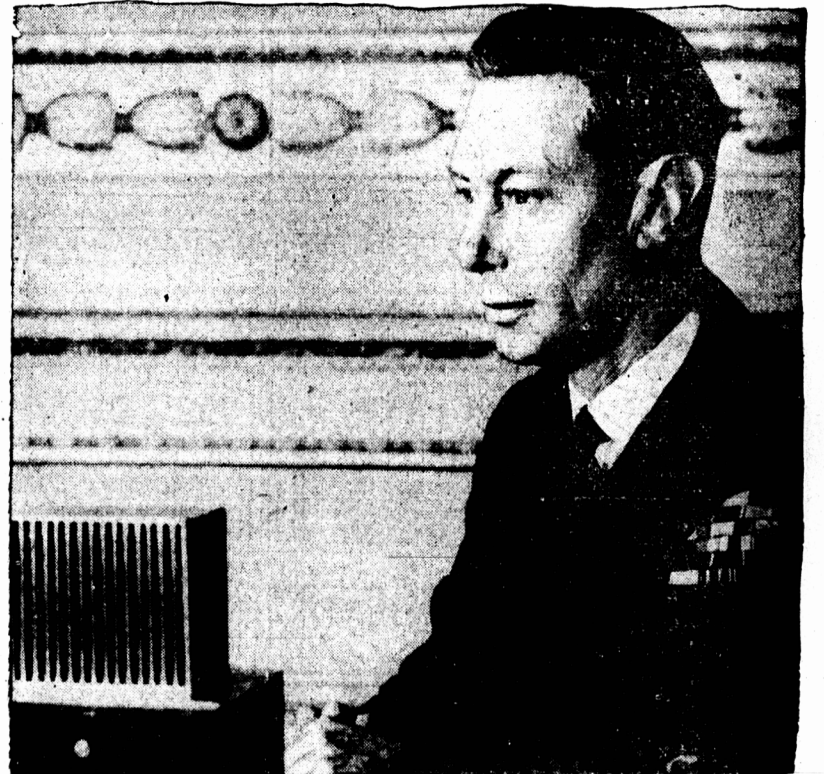
The first reigning Queen since Victoria. Princess Elizabeth becomes Queen Elizabeth II, Monarch of Britain, the Commonwealth and the Empire.



The Duke of Edinburgh, now Prince Consort?



Trained from childhood to assume arduous role of Sovereign, Queen Elizabeth is seen in her favorite role as mother.



Symbolic of His Majesty's devotion to the Empire were his frequent broadcasts to the Commonwealth.



Queen Elizabeth II and her Prince Consort pictured in royal car during recent visit to Prince Edward Island.

ELIZABETH BECOMES SEVENTH BRITISH QUEEN TO ASCEND THE THRONE



MARY I 1553-1558



ELIZABETH 1558-1603



MARY II 1689-1694



ANNE 1702-1714



VICTORIA 1837-1901



ELIZABETH II