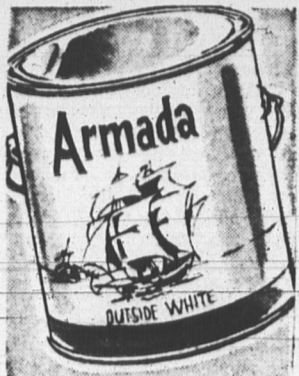
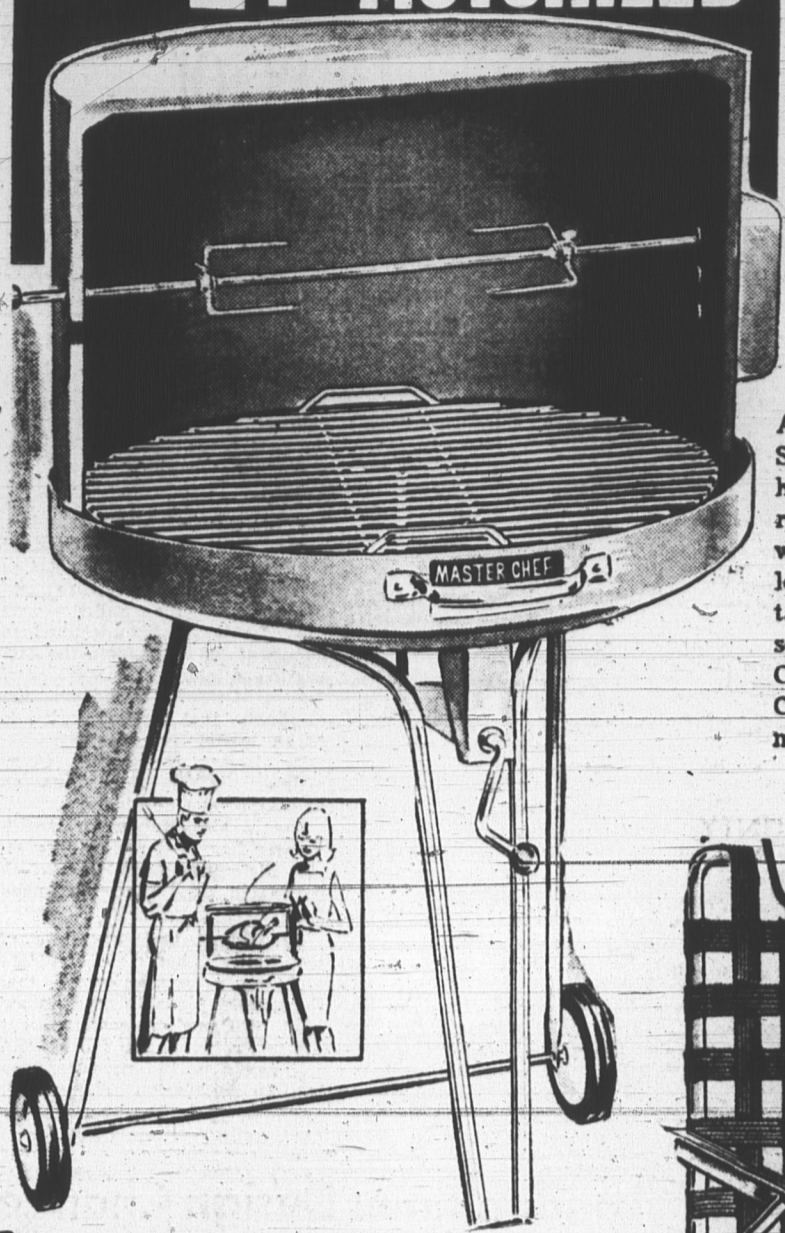


**SORRY  
NO PHONE  
OR MAIL  
ORDERS.  
NO  
DELIVERY**



**EXTRA SAVINGS!  
Armada  
Outside White  
House Paint  
REGULAR 3.98 GAL.  
MAY  
SALE 3.33  
GAL.**

# 24" MOTORIZED BARBECUE



A red hot saving of \$2.00! Sturdy 24" steel bowl. Grid height adjustment. 5 1/4" rubber tired easy-roll wheels. Tubular Aluminum legs. Metallic blue all-metal wrap-around hood with spit height adjustment. Complete with spit and CSA-approved 60 cycle motor.

**LIMITED QUANTITY SPECIAL!**

**1488**  
REGULAR \$16.88

## Matching Lawn Chair

Generously proportioned; seat about 17" wide and 16 1/2" deep; back about 29" high. Two-tone 2 1/4" wide web straps. For patio, lawn or beach. Plastic Arm Rest

**4.44**



## 6-Position Chaise

For the lazy days of Summer — Durable weather resistant polypropylene webbing — in Green, Blue or Yellow — with contrasting White. 5 vertical, 15 horizontal straps; Aluminum frame, folds flat

**8.63**

Plastic Arm Rest

**CANADIAN TIRE CORP'n**

# BIG MAY Sale



## 3 SIZES LIFE JACKETS

SML. 45-50 LBS. Comp. at \$2.79 **2.22**  
MED. 45-90 LBS. Comp. at \$3.39 **2.66**  
LGE. Over 90 LBS. Comp. at \$4.29 **3.44**

Colorfast brilliant orange. D.O.T. Government approved. Buoyancy packed — comfort fitted.

**2.22**

# Out They Go "99" HIGH TRACTION SAFETY

Clearing All 1965 Production

EXAMPLE: Catalog Price \$32.05 each  
775/14 SALE **32.65**  
(750/14) PAIR NO TRADE NEEDED

# 2 TIRES for the PRICE of 1

ROAD HAZARD INSURED

SIZE	2 TIRES FOR THE PRICE OF 1	
	BLACK	WHITE
520/10	24.55	27.60
520-550/12	23.80	27.05
500-520/13	26.85	29.85
590-600/13	26.45	29.80
640-650/13	28.15	31.65
700/13	29.25	32.90
500-520/14	25.60	28.60
695/14 (650/14)	28.60	32.20
735/14 (700/14)	30.35	34.15
775/14 (750/14)	32.65	36.75
825/14 (800/14)	36.65	41.20
855/14 (850/14)	39.85	44.85
885/14 (900/14)	44.90	49.90
560/590/15	28.60	32.20
440/15	30.35	34.15
775/15 (670/15)	32.65	36.75
815/15 (710/15)	36.65	41.20
845/15 (760/15)	39.85	44.85
885/15 (820/15)	44.90	49.90



Laundry Basket **66c**

Campbell "Pin Hi" GOLF BALLS 3 FOR **1.50**

Molded Plastic THERMOS Jug **2.77**

Ironing Board Cover **1.77**

Four Way Rim Wrench **1.07**

S. T. P. Oil Additive **1.18**

CATALYTIC HEATER Reg. 12.98 Sale Price **9.98**

AIR MATTRESS All rubber backed material. Compare at \$7.95. Sale Price **5.96**

LAWN SPRINKLER Oscillating Type, 4 settings. Covers up to 2200 sq. ft. **3.98**

Keep Dry Protective **94c**

SPORT PARKA With handy carrying pouch. **94c**

THUNDERBIRD PEDAL CAR This authentic model will be popular with any young driver. Durable moulded red body; white contrasting steering wheel and 7" moulded rubber tires. Adjustable pedals are rubber. Metal windshield. 37 1/2" x 14 1/2". **BIG MAY SALE 12.88**

14" PUSH BROOM Full 14" head of strong, hard bristles. Detachable hardwood handle and head. 2 sure-grip angle settings. Perfect for garage, basement, drive. Limited Quantity. Special **1.19**

SUPER CYCLE TRICYCLE For 3 to 5 year olds. Compare at \$13.98 **11.99**

FOLDING FENCE Picket design. Conforms to any contour. 10' long, 18" high. Green painted metal. Protects and beautifies. Compare at \$1.35 **.99**

3-PC. GARDEN TOOL SET All steel. Hand fork, weeder and trowel. Approx. 10" long. Orange enamel finish. Wood handles. Compare at 69c **.49**

HIKERS' TOURIST TENT 7 x 7 x 5'-high. Sleeps 2. Water repellent duck roof and canopy. Reg. \$19.99 **17.77**

CATALYTIC HEATER Burns 12-15 hrs. on 1 fill. All metal. 7 1/2" x 8" dia. Reg. \$12.98 **9.98**

LAWN EDGING Flexible. 3 1/2" high, 25 ft. long. No sharp edges. BIG MAY SALE! **.88**

Baby AUTO SEAT Sit or stand. Steering wheel. BEEP horn. Foam seat and back. Compare at \$7.98 **6.66**

BREEZY CUSHION Bucket style seat. Foam padded. Black, Blue or Red colours. Compare at \$3.98 **3.33**

5'x6' CAR ROBE Choice of colours. Smart patterns. Whipped edges. Big May Sale! Compare at \$4.98 **3.77**

AUTO WASH BRUSH **1.99**

WADING POOL **4.44**

**TRUCK STRIKE ENDS**

Tire Stocks again on the move —

Sorry if you were disappointed to find the "2-for-1" Safety "99" Tires temporarily out of stock, in your size. Now the big transports are again speed-hauling the remainder of our 1965 Warehouse overstock to Canadian Tire outlets across the country... Better hurry though — stock is running low, in some sizes.

**CANADIAN TIRE ASSOCIATE STORE**

STEWART & MacRAE ROYALTY MALL

EASY TERMS

EASY TERMS! EXTRA! Cash and Carry BONUS COUPONS!