

# TOURIST INFORMATION GUIDE

## We Welcome You to Montague The Beautiful

Yet, here is nature's own paradise, situated among the low rolling hills of our P. E. I. countryside. This spot has long been a favorite of tourists from all over the world and we invite you to visit us in the coming tourist season.



This Message Published by These Montague Firms - - -

- MacDougall's Diner
  - Jo Anna Dress Shop
  - Hooley's Men's Wear
  - BELLE'S SHOP
  - Helaine's Millinery
  - Hilchey & Vanderstine
- Town of Montague

### Tartan Skirts & Strides

In P.E.I., Nova Scotia, New Brunswick, Cape Breton, and other Tartans (Imported Wool Sweaters)

**THE FASHION SHOPPE**  
141 Great George St. Ch'town

### HARNESS RACING

**THIS WEEK'S RACES**  
JULY 8 - 11 - 13 - 8 P.M.

Plan To Attend Old Home Week Aug. 12 to 17

The Charlottetown Driving Park and Provincial Exhibition Association

### SHORE ACRES MOTEL

Dining Room OPEN DAILY

- LUNCHEON 12 to 1 p.m.
- AFTERNOON TEA 2 to 4 p.m.
- DINNER 5 p.m. to 8 p.m. 7 miles from Ch'town

Catering to Banquets and Wedding Receptions

Luxurious accommodations for guests  
1 1/2 Miles from Cornwall on Route 19

### Regular Dances ROLLAWAY CLUB

CHARLOTTETOWN

Mon., Wed., Fri. and Sat. Music by "Tremaines"

9:30 - 12:30

Tues. and Thurs. Record Hops 9:30 - 12:30

Also Regular Bingo Wed., Fri., Sat. 7:30

BOWLING Mon. to Sat., "Automatic Pin Setters"

the smartest things under the sun IN SUMMER FOOTWEAR

- Summer Sandals
- Canvas Canvas
- Dress Footwear
- Beach Things

WELCOME TOURISTS

**LePAGE SHOE CO.**

"The Home of Good Shoes Since 1920"

Charlottetown's most exclusive shop - - - specializing in AUTHENTIC TARTANS

Skirts - Bermudas - Strides - in imported wools from the British Isles.

- FURS
- LADIES' WEAR

island furriers ltd.  
79 Grafton Street

A "MUST" - - - a visit to STRATHGARTNEY HOMESTEAD

Campers Supplies, Store, Gifts, Novelties

- SCENIC BEAUTY
- GUIDED TOURS
- FISHING

On Route 1 adjacent Strathgartney Park

WELCOME TO OUR ISLAND

### ABEGWEIT SIGHTSEEING TOURS

Enjoy scenic guided tours of P. E. I. National Park, with stops at Dalvey, Starbuck and Brackley beaches. Also a visit to Cavendish Beach and Green Gables, "Home of Anne", made world famous by the novels of Lucy Maud Montgomery. Side tours to Woodluff Rapids and other points of interest. This tour also includes . . . a stop at Rustico, "an Acadian fishing village".

Phone 4-9966

Be Sure to Go Dining at MILTON'S OLD SPAIN

"Where most People Prefer to eat."

DIAL 4-7653

Kent St. Ch'town

FOR YOUR VACATION NEEDS

Janzen Swim Trunks Sportwear, etc.

**Maurice Mill Ltd.**  
Summerside

HOWATT'S LOBSTER POUND

Fresh Lobster, Fresh Lobster Meat, Live Lobster to take out. We ship to N. B., Quebec, Ontario, Live or Cooked.

Victoria, P. E. I. Phone 58

### P.E.I. Wild Life Park Inc.

Seals - Bears - Waterfowl - Caribou - and Moose

Native Birds and Wild Animals Displayed in Natural Surroundings

Charles O. Bartlett, President and General Manager

North Rustico, P.E.I.

Four miles from Green Gables on the National Park Highway

### HILLSIDE INN HOTEL MONTAGUE

"We serve everything Especially Sea Food"

Air Conditioned Dining Room and Restaurant

Lauches Full Course Meals Banquets and Dinner Parties

A Glimpse of Britain on P. E. I.

WOODLEIGH REPLICAS

Featuring large scale models of Britain's finest buildings and churches.

Open daily 9 a.m. - 10 p.m. Closed Sundays.

Near Kensington, and mid-way between Summerside and Green Gables in the National Park. Adults 50c - children free.

### GAUDET'S Tourist Lodge

Near Sandy Beach Tignish, P. E. Island

Phone 66

Accommodations - Meals

F. GAUDET, PROP.

FOR THE BEST IN MEALS BE SURE AND CALL AT MORRELL DINEE

and try the finest foods that will satisfy your appetite.

MORRELL DINEE  
Carl MacAdam, Prop.

### FINEST RESTAURANT

189 Kent

RENDZVOUS

For the Finest In CAR CARE

Use SHELL PRODUCTS

For Campers and Picnickers

TRANS-CANADA SHELL SERVICE STATION  
Cornwall P. E. I.

for your dining pleasure

Nightclub Entertainment

MAX SEELER on the Piano-accompanist

European Food - Steaks

Closed Sundays.

Flying Dutchman RESTAURANT  
174 Queen St.

FOR ALL YOUR BARBECUE NEEDS

FORD'S MEATS

DIAL 4-9223

Elm Ave. Ch'town

FOR ALL YOUR BARBECUE NEEDS

FORD'S MEATS

DIAL 4-9223

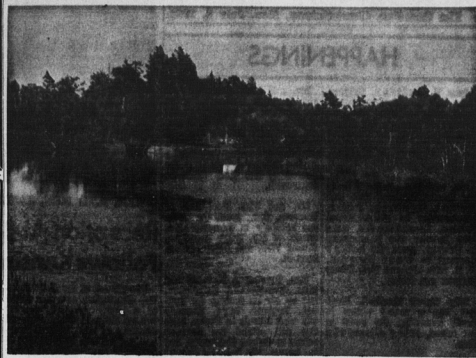
Elm Ave. Ch'town

Eastern Kings ARTS and CRAFTS

Kingsboro, P.E.I.

Beautiful scenic drive. Watch for signs at Kingsboro. Souvenirs and handicrafts.

5 miles east of Souris.



Unexpected scenic beauty greets you at almost every turn as you drive along Island highways . . . this scene at Mont rose reflects the tranquility of Island rural life, and gives perhaps a hint that a few trout may lurk in its peaceful waters. Montrose is located in the west end of the Island.

### Moore & McLeod Ltd.

LADIES WEAR  
MEN'S WEAR  
CHILDREN'S WEAR  
HOUSE FURNISHINGS  
TARTANS  
WEDGWOOD  
SOUVENIRS

Quality merchandise

Moore & McLeod Ltd.  
Your Favorite Shopping Centre

145 QUEEN ST. CHARLOTTETOWN

on your way to the NATIONAL PARK stop for

- All Size Film
- Suntan Lotions
- First Aid Products
- Prescriptions
- Souvenirs

PARKDALE PHARMACY

open daily till 10 p.m.

St. Peter's Rd., Parkdale

### Clermont Motel

1 1/2 Miles West of Kensington on route 1 Summerside Highway.

12 Modern Units

Rates \$5.00 and up

Phone Kensington 156

Mr. J. K. Pidgeon Mgr.

### Let's All Go To The Dairy Queen

For a Fresh Frozen Treat

Sundries Milk Shakes  
Banana Spills Sodas

On Trans-Canada Highway  
Route 1 One Mile Middle City Limits

### TOURISTS

we invite you to stay at the

Loch Dhu Haven Camping and Trailer Court

Red Point 6 Miles East of Souris

### MILLER BROS. MUSIC DEALERS

DIAL 4-3535

Great George Street

### PETER PAN DRIVE IN GOOD FOOD

- Chicken in the Basket
- Seafood Basket
- Smoked Meat Sandwich
- Steak Burgers

PETER PAN Drive In Restaurant

Malpeque Road at the Trans-Canada Highway

### WELCOME TOURISTS

Charlottetown's leading LADIES' WEAR STORE

Open All Day Sat.

NORMA'S

Kent Street across from Esplan's

the finest shows to be seen on P. E. I. are at the

### Parkview

Drive In Theatre

Brackley Pt. Road

Route 15

Show Nightly at Dusk Come Enjoy Yourself

### TOURISTS SHOP FOR

- Island Tartans
- Harris Tweeds
- All wool sweaters

at

Dow's

Men's Wear

Good Taste in Fashion Costs Nothing Extra.

### WE RENT

Televisions, Fridges, Washers, Stoves

WE SELL

Toys, Furniture, Tires & all Appliances large & small.

PRESCRIPTIONS

HOME & AUTO CO. Ltd.

Ch'town - Next door to King Koin Laundry

### ICE CUBES

For

- Your cooler or at the Beach or your social evenings.
- S. R. Johnston's FINA STATION
- St. Peter's Rd. Parkdale
- "On Your Way to Brackley Beach"

### Campbell's Personal Guided Tour of P.E.I.

See the Island with an Islander. Transportation available to all tourists on any sight-seeing tour of our Island Province.

Accommodation for picnics, fishing, or day at the beach.

For further particulars - PHONE 894-4703 or New Haven -6 - "Moderate Rates" -

### Summer Cottons

sizes 7 - 24 1/2

The GLORIA

Ladies' Wear

151 Gt. George St.

### CHINESE FOODS

- Snack Bar Service
- Full Course Meals
- Take Out Orders
- Situated up-town

ISLAND GRILL

Queen St. Ch'town

### COME IN AND TRY OUR

- Pizza Pies
- Spaghetti with Meat Sauce
- Lobster Pie
- Southern Fried Chicken
- Smoked Meat
- And many other dishes

Larry's Restaurant

Free Delivery

Dial 4-9023 or 4-4015

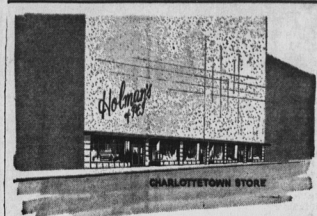
E. REYNOLDS

Radio & TV Sales & Service

Phone 73, Murray River, P.E.I.

Attention Visitors & Tourists

We have available a large selection of fully reconditioned TV sets of various makes. Ideal for use in summer cottages. Priced reasonable to sell fast. We also offer a prompt car radio service.



if you haven't seen Holmans you haven't seen The Island!

How do you get to know a strange place? You sightsee, you walk, you visit its attractions, eat its food . . . and you shop in its great store. Because so much of the fun of being in a strange city is getting to know its people . . . and where can you do this better than in the store they shop?

You'll find a cordial welcome waiting for you at both our stores . . . French is spoken, too. Before you leave the Island you'll want to stop by here . . . for just as there's no province quite like Prince Edward Island, there's no store quite like Holman's.

Complete departments in ladies' wear, men's wear, children's wear, shoes, sporting goods, appliances, furniture, candy counter, cosmetics, hardware and tenting, home furnishings . . . all the products of our thriftyly that make shopping here a pleasure . . . at typical Holman prices.



### Perfect for Picnics

BUCKET DOW'S KENTUCKY FRIED CHICKEN 15 PIECES SERVES 5 - \$3.95

SMALL BUCKET 8 PIECES Serves 3 to 5

2.50

RESTAURANT

Grafton St. Ch'town

### BEFORE

the wool comes to Condon's Woolen Mill

AFTER

It has been to Condon Woolen Mill

Visitors Welcome

- Yarns
- Blankets
- Anto Rolles
- Island Tartan Blankets

Made of 100% Virgin Wool

WM. CONDON & SONS

65 Queen St. Charlottetown

Dial 4-5713

### TOURISTS

If you are looking for the best of bargains come and see us.

Free Delivery

E. N. KAYS & Sons GROCERIA

4-6234 Dial 4-6234

Upper Queen and Chestnut

### TOURISTS

For Your Groc. Fruits & Veg.

S.N. KAYS

87 Pownall St. Ch'town

### Complete FISHING INFORMATION

- Fly & Bait Supplies
- Rod and Reel
- License Sold Here

THE BIKE SHOP

Great George St. Ch'town

### ICELAND

For Your Picnic Needs

MacLEAN'S GROCERY

Windsor, P. E. I.

### SOUTHPORT COUNTRY CLUB

GOLF SWIMMING TENNIS ARCHERY AIRPORT REFRESHMENTS

Phone 4-9815

### DRIVE-IN

2 miles from Ch'town on the Trans-Canada Highway to Borden.

### Rowanwood TOURIST HOME

Cavendish and beach also Brackley Beach only 15 minutes drive.

Private Camping Grounds Telephone Hunter River 31-11

Prince Edward Island

### Kennedy's

--- ladies' fashions of distinction

### RIVER VIEW ESSO SERVICE

15 Miles from Borden

CRAPAUD, P.E.I.

One sixty-six Queen Charlottetown