

# Personal from the Chairmen

It's now ten o'clock on Sunday morning and we sit here with Editor Dave MacRae (all three of us hung over from a hard night's play), hardly daring to believe that the whole thing is almost - ready.

When you look back at those early hassles in November trying to book bands who wouldn't play or who were too far away or who had rip-off agents...well, it's nice to get by that.

Still it's hardly over. The last minute changes..the

unforseen problems...the bands who still aren't booked...make Carnival week a very hectic one, not to mention that we'd like to have a good time during it like everyone else.

Still and all, you can't regret something like this. It's been a learning experience and a satisfying one. But whether we'd go through it again. Well, please don't ask.

Carnival this year - we hope - will be one that you will remember for years to

come. It's early enough so that it doesn't conflict with mid-terms and late enough that it can provide a good break in the term. So it's at what is probably the best time of year.

There are some new events like the snowmobile races and, of course, the traditional ones like snow sculptures, skates, parades, etc. Not to mention the ever-present pubs, bashes, 'n' Ball. The bands are good too. So it should add up to a real fun Carnival. Without Regrets (except maybe a few)

*Steve Macdonell*

*Pat*

*Steve*

## Timetable

### WEDNESDAY - JANUARY 28, 1976

- 2:00 - 5:00 - Pub in Lounge
- 6:00 - 7:00 - Torchlight Parada
- 9:00 - 1:00 - Bash in Gym "Finnigan"
- 1:00 - 2:30 - Skate on Rink between Bernadine and Blanchard Hall

### THURSDAY - JANUARY 29

- 10:00 - 12:00 - Broomball in the Rink
- 2:00 - 5:00 - Sockhop in Barn  
Fashion Show  
Carnival Queen will be there
- 5:00 - 6:00 - Quebec Night in Cafeteria
- 6:30 - 8:30 - Hockey Game; Campus Police vs. CFCY Chargers
- 9:00 - 1:00 - Bash in Gym "Liverpool"

### FRIDAY - JANUARY 30

- 9:00 - Car Rally
- 10:30 - Skidoo Races
- 12:00 - 2:00 - Events in the Rink  
- Bridge Tournament
- 2:00 - 5:00 - Pub with Talent Show
- 9:00 - 1:00 - Ball at Confederation Centre "Karma"
- 9:00 - 12:30 - Disco in Barn

### SATURDAY - JANUARY 31

- 9:00 - 11:00 - Pancake Breakfast in the Barn
- 12:00 - 3:00 - Pub in Barn
- 2:00 - 5:00 - Basketball in Gym  
Panthers vs. Acadia  
Both Boys and Girls
- 9:00 - 1:00 - Bash in Gym "Sun Machine and Horse"
- 12:30 - 2:00 - Midnight Madness Skate in Rink

### SUNDAY - FEBRUARY 1

- 1:00 - 1:45 - Interfaith Service in Marion Co-ed Lounge
- 2:00 - 4:00 - Hockey U.P.E.I. vs. Dalhousie
- 8:00 - Movies

**SNOW SCULPTURE** - begins on Friday 23. Must register your sculpture at the Student Union Office. Prizes will be offered for 3 - 4 best sculptures. Sculpture must be along University Avenue.

**CAR RALLY** - starts Friday January 30 at 9:00 A.M. People must pick up entry form at Student Union Office and return by Wednesday January 28 by 4:00 P.M.

**CARNIVAL BALL TICKETS** - will go on sale at the U.P.E.I. Student Union Office and at the Bookstore on Thurs. January 22. \$5.00 per couple.

**THIS IS A U.P.E.I. STUDENT CARNIVAL. U.P.E.I. STUDENTS ONLY. BRING YOUR I.D.'S AND COME EARLY.**

## Regulations Will Be Strictly Enforced

During this Carnival even more stringent controls than in the past will be in effect.

It is unfortunate but true that the gym only holds six hundred people and we want as many as possible of those six hundred to be UPEI students.

Each time you go into an event, regardless of whether you've been in before or not you will have to present your I.D. Card. This is to prevent people from going in, coming out and giving their card to someone else.

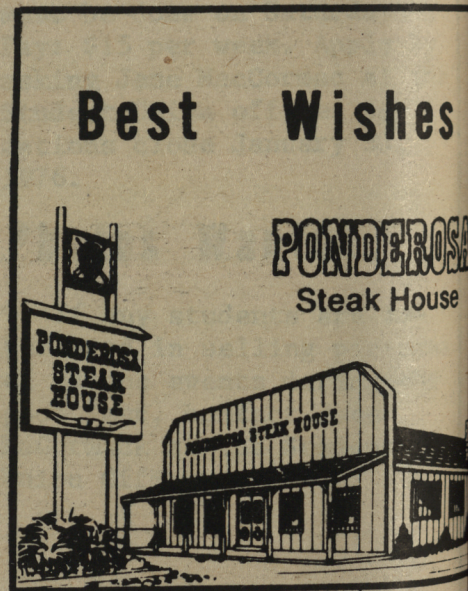
Further, when waiting to get into an event in the gym, you will have to wait outside. There are many people who, once they get into the gym, are very difficult to get out again if they discover that they will not get in because they are not students. Therefore, to make it easier all around, you will have to wait outside. To compensate for this we will try (after the first night) to open the doors before the bar is open and the band starts to play.

Each student, though, will be allowed to bring a date from outside the university to events. However,

since he/she is not a student if he/she goes outside, it might be difficult to get back in. Those with dates, beware.

It is unfortunate that these types of things have to be done but each year at Carnival time there are students who do not get by the door. So to ensure that as many students as possible get in, these regulations are to be strictly enforced.

Your co-operation would be appreciated. If we get lots of it, that room will be filled up with no one but students and their dates.



**BILL'S GULF SERVICE STATION**

SAYS

**BEST WISHES**

412 UNIVERSITY AVE.

PHONE 894-3516

THE FASTEST PUMPS IN TOWN