

JULY IS SALAD MONTH AT DOMINION!



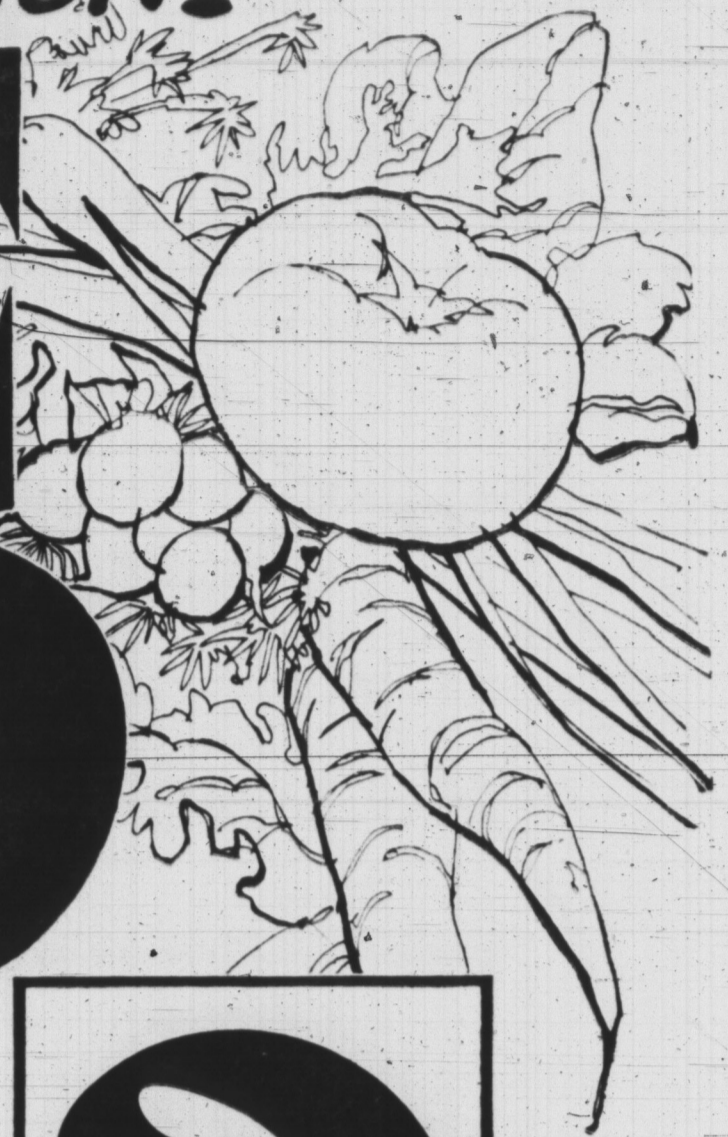
# SERVE SALAD

A DIFFERENT

EVERY DAY!

Everything is **FRESH DAILY!**  
at your neighborhood **Dominion**

Snappy dewy-fresh fruits and vegetables are here in all their sunny appetizing goodness... and Dominion has the 'pick of the crop'! Pep up taste buds and bring colour to your summer menu! Your family will make you "Salad Queen" when you serve delicious ideas in good summer foods. Right now, the produce counters at Dominion are bulging with everything you need for the Salad making. Switch to Dominion and celebrate Salad Month with wonderful salads every day! You'll cut produce costs, too!



CANADA PACKERS EASY TO SLICE "KAM"

**LUNCHEON MEAT** 12 OZ. TIN **49c**

AVON IN TOMATO SAUCE OR MOLASSES

**BEANS WITH PORK** 28 OZ. TIN **16c**

FOR SALADS OR ANDWICHES—CORDON BLEU BONELESS

**CHICKEN** 7 OZ. TIN **33c**

KRAFT MARSHAL WILSON

**SALAD DRESSING** 32 OZ. JAR **59c**

FROZEN FOOD

DOMINION'S OWN DOMINO

**FRENCH FRIES**

2 9 Oz. Pkgs. **37c**

HIGHLINER PRE COOKED IN BATTER

**Haddock** 14 OZ. PKG. **58c**

FRASER VALE MIXED

**Vegetables** 2 LB. POLY **55c**

FARMHOUSE ASSORTED FLAVORS

**Cream Pies** 12 OZ. EACH **49c**

MARVEN'S

Carload Assorted

**BISCUITS**

3 CELLO PKGS. **99c**

AVON CHOICE

**Green Peas** 2 20 OZ. TINS **37c**

AVON BLUE LAKE OR CUT

**Wax Beans** 2 20 OZ. TINS **37c**

PROCTOR & GAMBLE SHORTENING

**Fluffo** 1 LB. PKG. **37c**

OLD HOMESTEAD STRAWBERRY

**Jam** 24 OZ. BOTTLE **49c**

NEW SWING ORANGE FLAVOR

**Crystals** PKG. OF 3 **49c**

K. Y. FANCY

**PEACHES** 28 OZ. TIN **43c**

MAPLE LEAF CANNED

**HAMS** 11 1/2 LB. TIN **1.59**

LOCAL GROWN LARGE CRISP TENDER

**LETTUCE** EACH **23c**

LONG GREEN FOR SLICING

**CUCUMBERS** 2 FOR **39c**

CANADA NO. 1 COOKING

**ONIONS** 3 LB. BAG **43c** LOCAL GROWN TENDER **Green Onions** 2 FOR **25c**

FOR SALADS RUBY RED

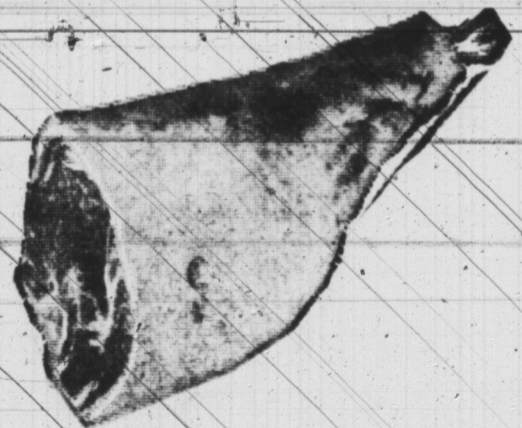
**TOMATOES** 12 OZ. PKG. **33c** SUNKIST SWEET JUICY **ORANGES** 5 LB. BAG **79c**

GOVERNMENT INSPECTED MEATS

FRESH KILLED ISLAND SPRING

**LAMB LEGS**

Lb. **89c**



SWEET TENDER & JUICY

**LAMB FRONTS** Lb. **65c**

TENDER TASTY BROIL OR FRY SHOULDER

**LAMB CHOPS** Lb. **79c**

TRY BARBECUING. ECONOMICAL FRESH

**LAMB FLANKS** Lb. **39c**

FOR BARBECUING. ROASTING FRESH

**SPARE RIBS** Lb. **77c** MAPLE LEAF VACUUM PACKED **COOKED HAM** 4 OZ. PKG. **69c**

SWIFT'S PREMIUM TASTY TENDER

**WIENERS** 1 LB. CELLO **55c** THICK JUICY GOLDEN BROWN **Smoked Fillets** Lb. **49c**

NON FOODS - ST. PETER'S RD. ONLY

MEN'S & LADIES BEACH

**SANDALS**

Pair **49c**

PICNIC PACK OF 100 PLASTIC

**SPOON & FORK SET**

Reg. 98c For **59c**

STURDY BUILT

**CAMP STOOLS**

Each **99c**

OPEN FRIDAY NIGHT UNTIL 9:30  
CUT FOOD COSTS

**Exciting Offer!**  
**BOLERO TUMBLER**

This weeks Cutout...  
**TURQUOISE**

Keeps things **HOT & COLD** longer!

**ONLY 39c EA. BUY A SET!**

Beautiful "Completers" Too!

Support Your Community  
Centennial Project 1887-1987

**DOMINION**

VALUES EFFECTIVE UNTIL CLOSING SATURDAY, JULY 23RD. WE RESERVE THE RIGHT TO LIMIT QUANTITIES.

QUEEN STREET DOMINION STORES LTD. PARKDALE