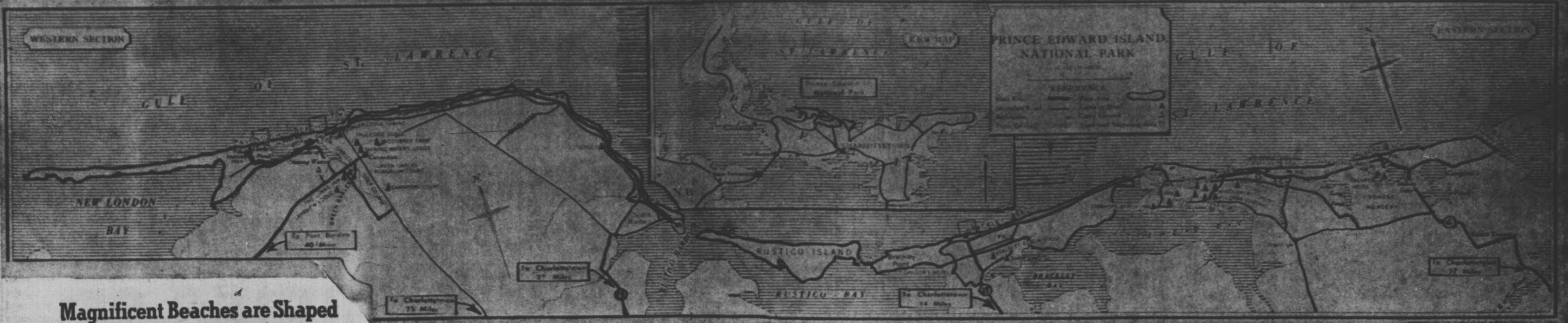
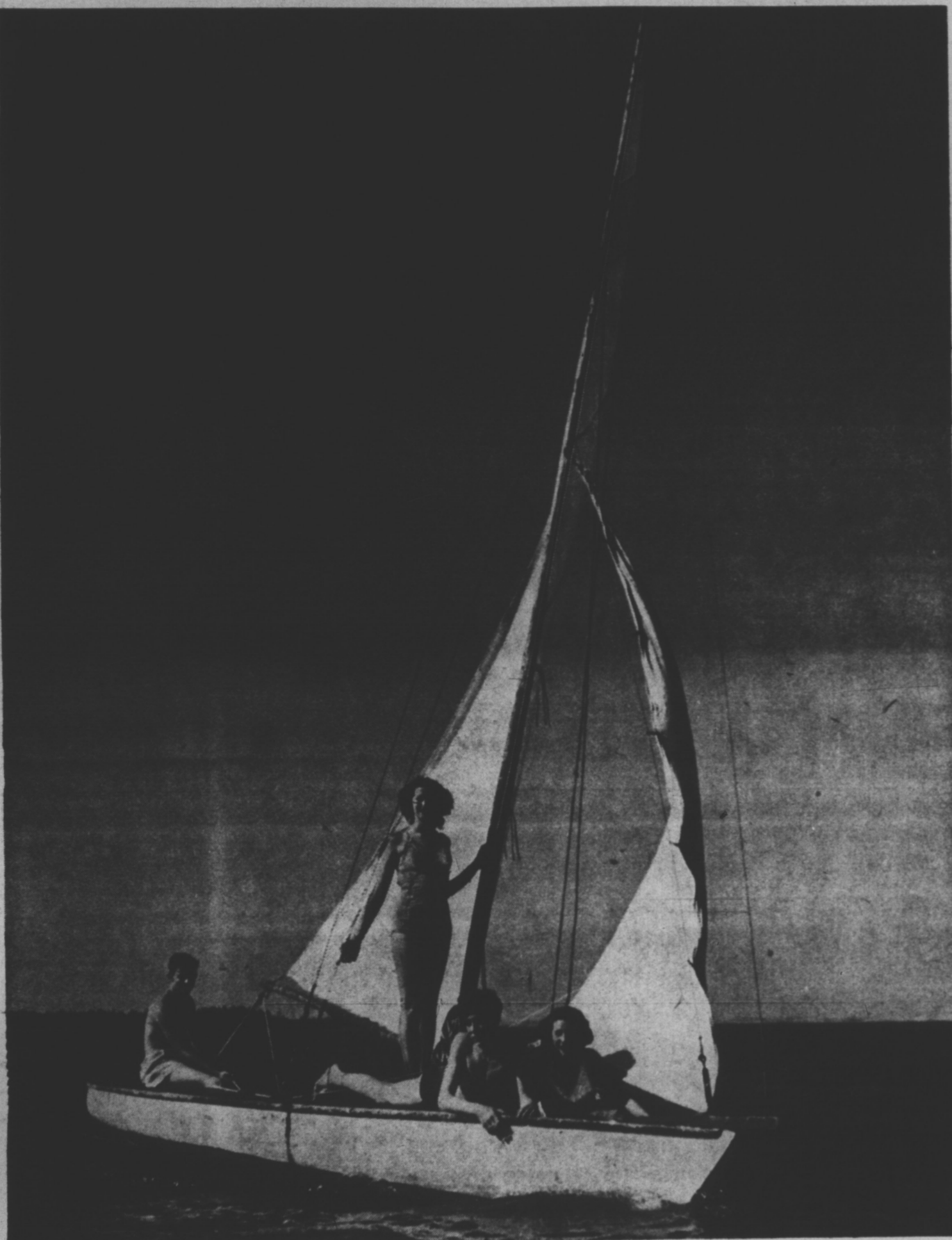


National Park Extends Along Almost 25 Miles Of North Shore To Form Giant Playground



Magnificent Beaches are Shaped By Action of Gulf's Waters



SAILING IS A POPULAR ISLAND PASTIME . . .



AS IS PLAYING GOLF . . .



AND JUST LAZING IN THE SUN

National Park Area Is Studded With Resort And Fun Facilities

Prince Edward Island National Park was established in 1937 and contains an area of approximately seven square miles. It extends along the north shore of the Island Province for a distance of nearly 25 miles.

Among its outstanding features are its magnificent beaches, beaten broad and smooth by the constant action of the surf from the Gulf of St. Lawrence. Adjacent to these beaches, sand dunes and sandstone cliffs rise to considerable heights, and, across the mouths of several bays, small islands and shoals give protection to the inner waters.

WARM WATER

The delights of salt water bathing and relaxation on the sandy beaches are enhanced by the healthful climate. The temperature is ideal, the air invigorating, and the water is warmer than at many points hundreds of miles to the south along the Atlantic Coast. Supervised swimming areas are provided in all main sections of the Park. The Park is composed of three

main sections, each of which borders the seashore.

DALVEY-STANHOPE.

The eastern, or Dalvey-Stanhope section, extends from Tracadie Bay to Covehead Harbour. It contains the administrative headquarters of the Park, as well as Stanhope campground and a trailer park, with facilities at present for approximately 70 tents and 12 trailers. These facilities are being expanded to provide for a minimum of 150 tents in 1939, while a continuing development program will see still further expansion of all necessary facilities.

A public golf driving range, lawn bowling green and double tennis court are available at Dalvey, near Park Headquarters and famous Dalvey House, the lovely summer hotel, Dalvey-by-the-Sea. A fine softball field is located near Covehead, children's play equipment is available at all picnic sites in the section.

BRACKLEY

The Brackley section lies between Covehead Harbour and Rus-

tico Bay, and is linked to the Dalvey-Stanhope section by a new bridge across Covehead Harbour. This section contains one of the longest stretches of beach in the newly completed Gulf Shore Road.

Also available is a spacious picnic area set just within walking distance from the supervised swimming area. For the past couple of years, this has been used to accommodate the overflow of campers from Stanhope campground. With the completion of construction of the Gulf Shore Road across the entire length of the Park, expected in 1940, new or expanded campgrounds will absorb this overflow and permit Brackley picnic ground to resume its intended role.

A class-surfaced tennis court, softball field and playground equipment are available at Brackley.

GREEN GABLES

The Cavendish or Green Gables section forms the western part of the Park, and extends along the coast from Rustico Harbour to New London Bay. Green Gables, the farmhouse made known to thousands by the novel "Anne of Green Gables", and other related stories by Lucy Maud Montgomery, is situated in this section of the Park, within a short distance of Cavendish.

For years it has been an unfailing point of interest for visitors to Prince Edward Island, and is now available as a tea-room. Although repaired and painted, the original building has been faithfully preserved in all its details, and an attendant is on hand to escort visitors through its rooms.

Many other points of interest associated with the "Anne" story and "Lover's Lane", are easily

reached by paths and trails which lead from the building.

Part of the development in the Cavendish Beach area includes an 18-hole golf links and clubhouse, tennis court, dressing room facilities for bathers, supervised swimming areas, a developing campground, and a recreation hall where games, dances, motion picture shows and theatricals are held.

RUSTICO ISLAND

The National Park also contains Rustico Island, as yet undeveloped, lying across the mouth of Rustico Bay. The Gulf Shore Road will be completed across the Island in 1939.

Prince Edward Island National Park, now under the direction of a full-time resident Superintendent, is being developed in accordance with the best traditions of the National Parks Service, to meet the ever-increasing need and demand for healthful play and relaxation in natural surroundings. Here in the unburied atmosphere characteristic of the Island, visitors find in the uncrowded golf course and tennis courts, the leisurely campgrounds, quiet picnic spots, and the delightful surf, their perfect vacation.

BRITISH COLONY

The Island was ceded to Great Britain in 1763 and placed under the Government of Nova Scotia.

AGE OF STEAM

The first steamer to enter Charlottetown Harbour was a small one called "Richard Smith" on August 10, 1800. The second steamer to arrive was the "Roya William," in 1831. She was later the first steamer to cross the Atlantic under her own power (1833). She was built in Montreal.

1,100 MILES

(Continued from Page 1)

ing the summer holiday season here. They can watch games played in the large centres or rural areas and, if they like it, can organize a game for themselves at some resorts.

RACING

Harness Horse Racing leads all spectator sports on the Island. Since the 1890's the Sport of Kings has been a major attraction and the tracks at Charlottetown and Summerside are well known internationally. Pari-mutuel betting is permitted at the tracks throughout the Province. Night racing has been in vogue at both Charlottetown and Summerside for many years. During Old Home Week, in mid-August, horses from eastern Canada and the United States line up with the best from the Maritimes to compete at the Charlottetown Driving Park and Provincial Exhibition. This combined race meet and agricultural fair is an attrac-

tion to the visitor and Island folk alike. The grandstands are packed afternoons and night during this highly competitive week of racing.

The followers of Isaak Walton on the Island are legion. Bait fishermen and fly casters alike revel in the good trout fishing to be had in ponds, brooks and streams. Some of the finest of eastern Canada's brook and sea trout are a stone's throw from the highway. You can fish from the bank of the stream or go out in boats which are available for a nominal sum at most mill dams. The season runs from mid-April to mid-September with the best sea trout fishing to be enjoyed usually in July and August. Rainbow trout are a rewarding catch at several fishing spots.

Men, women and children enjoy the sport of deep sea fishing. For a very nominal fee, fishermen along the shore will take individuals or parties out for a day or a few hours. It is only a few miles off shore to the schools of cod and mackerel.

Handlines are supplied and it is easier to land a two-pound fish than catch a trout inland. Mackerel fishing with a fly rod is a fast coming sport. The thrill of catching a big mackerel on a fly rod is something for conversation for days.

VOLUNTEER GUIDES

The Island Travel Bureau with the co-operation of the Fish and Game Association maintains a list of local anglers who will be happy to conduct the visitor on a fishing outing. To emphasize the growing importance of this phase of Island tourist promotion, the Department ran the following ad in local papers:—

"Attention Trout Fishermen! Hundreds of tourists, many of whom are lovers of trout fishing, visit the Province every summer. Unless they have close friends here, they do not know where to fish or how to get there. The Travel Bureau is appealing to trout fishermen on the Island, to share a fishing trip with these people. Anybody interested is urged to register his name with the

Travel Bureau at once. You will not be called on too often, perhaps once or twice during the summer. You will meet interesting people, and at the same time, (Continued on Page 4)



IRENS ABOUND, FROM PINT SIZE UP

DIAMONDS
of Fine Quality
\$20.00 to \$350.00
Exquisite Selection

Important Romantic Decisions are often made on vacation.




MOASE JEWELLER
The Store for Fine Reliable Watches
Water Street Summerside

FOR A REAL RELAXING . . . FUN FILLED VACATION . . .



KIRKWOOD MOTORIST HOTEL



GUEST LOUNGE



COFFEE SHOP



SUITE OF ROOMS

PLAN NOW TO VISIT THE KIRKWOOD MOTEL CHARLOTTETOWN, P. E. I.

Operated by Mrs. G. MacLeod, A. A. A. Approved. Situated in the City of Charlottetown on routes 1 and 2. A modern brick building, fully sound proofed, overlooking Charlottetown's beautiful Experimental Farm. Comprises coffee bar and dining room . . . luxurious lounge with television and 42 units with 2 suites consisting of bedroom, bath and sitting room which may be converted to sample room for salesmen. Friendly atmosphere, attractive furnishings and restful color schemes. All rooms have wall to wall carpeting, television, radios, telephones and air foam mattresses. Baby cots available, thermostatically controlled heating system, cross ventilation and ceramic tiled baths with full tub and shower. Shuff leboard and playground for children. Member of P.E.I. Tourist Association. Rates on application. Phone 8527 or write Kirkwood Motel, Malpeque Road, Charlottetown.

FOR COMPLETE INFORMATION

WRITE OR PHONE CHARLOTTETOWN, P. E. I.

THE KIRKWOOD MOTEL

PHONE 8527