

Timber Demand Hike Is Reported

GENEVA, Switzerland (AP)—A massive increase in demand for timber is forcing European countries who once had large export surpluses to scour the world in search of new sources of supply. A joint report published here

by the United Nations economic commission for Europe and the Food and Agricultural Organization said the sharp acceleration in demand for wood could be a great benefit to underdeveloped countries, many of which have huge, untapped forests.

A big increase in the use of wood for pulp and paper is one of the main factors in what the report calls "a sharp acceleration" in the pattern of timber use in Europe.

By 1960 one quarter of all wood used went into pulp and paper whereas at the end of the Second World War less than one-fifth of all timber was used for this purpose.

The demand for timber for other purposes had also risen sharply but not to the same extent, the report said.

Wood-based panel products, plywood and fireproof products have all shown tremendous rises in sales and thereby have thrown an even greater strain on current timber supplies.

In 1950 Europe was self-sufficient in timber supplies. By 1960 imports exceeded exports by some 20,000,000 cubic metres worth about \$750,000,000.

This year imports are expected to exceed \$1,000,000,000 a figure which will be doubled sharply by 1975 if the present trend continues.

The report suggested that the huge forest reserves of the Soviet Union and North America could satisfy much of the extra demand.

The report said that consumption of industrial round-

wood in Europe between 1950 and 1960 rose to 245,000 cubic metres from 174,000,000, a 40 per cent increase.

Use of wood for pulp and paper making doubled during the same period while consumption of timber for wood-based panel products tripled.

Forecast of timber needs by 1975 were based on the forecast of the growth in the Gross National Product (the annual total of goods and services produced)

in European countries during the period.

Taking the estimate that the European GNP will, on average, double between now and 1975, the increase in consumption of forest products is expected to increase by between 40 and 50 per cent.

PISQUID EAST

A large number from Pisquid East attended the Centennial Day activities at Mount Stewart Wednesday.

Mrs. John MacDonald with son Blair, Mont Mellick were visitors at the home of Mrs. MacDonald's parents, Mr. and Mrs. Edward Jay recently.

Mr. and Mrs. David Birt, Charlottetown, were visitors at the home of Mr. and Mrs. Harold Jay recently.

Mr. Floyd Jay was a visitor in Charlottetown Thursday.

Mr. and Mrs. Edwin Craig, West Covehead and their daughter Elsie and Marjorie, Toronto, Ontario, were visitors in Pisquid East Friday, where they

were the guests of Mrs. Craig's sister Mrs. George Jay, and Mr. Jay.

Mr. and Mrs. Earl Jenkins with son Shippy and daughter Heather left Saturday morning for their home in Worcester, Mass., having spent the past two weeks at the home of Mr. and Mrs. Alton Jay.

Miss George Dover and her mother, Mrs. George Dover were visitors in Canavay Sunday the guests of Mr. and Mrs. Roy Farquhar.

FOR THE BEST IN MEALS BE SURE AND CALL AT MORELL DINER and try the finest foods that will satisfy your appetite.

MORELL DINER
Carl MacAdam, Prop.

Take the work out of Camping visit our Delicatessen Specials Every week

Enterprise Bakery
235 Grafton St.
DIAL 4-8747

WE RENT
Televisions, Fridges, Washers, Stoves.

WE SELL
Toys, Furniture, Tires and all Appliances large and small.

PIRESTONE HOME & AUTO Co. Ltd.
Ch'town—Next door to King Kola Laundry

Summer Cottons
sizes 7 - 24 1/2

The Gloria Ladies' Wear
135 St. George St.

Regular Dances ROLLAWAY CLUB

CHARLOTTETOWN
Mon., Wed., Fri. and Sat. Music by "The Hi-Notes" 9:30 - 12:30

Tues. and Thurs. Recessed Hops
9:30 - 12:30

Also Regular Bingo

Mon., Wed., Fri., Sat. 7:30 Casual Bowling
Mon. to Sat. "Automatic Pin Setters".

WOOLWORTH'S

Queen St. Charlottetown

ONE STOP Girl Centre

Lunch Counter
Open daily from 8 a.m. for Breakfast.

Bakery Counter
All Goods Baked Fresh Daily in our own Kitchens.

Your Money Buys More at Woolworth's.

Mr. Tourist Silver Waters Motor Lodge

Offers:

- 16 units heated
- Showers
- Playground

Route 1-A 2 miles east of S'tide

Racing Every Monday, Thursday and Saturday Nights at 7.45

Plan to Attend Old Home Week Aug. 17 To 22

The Charlottetown Driving Park and Provincial Exhibition Association

Tourist Information Guide

George Agnew SEAFOODS
Wholesale - Retail

- live and cooked — lobsters, clams
- oysters, quahaugs

We Cater to Banquets
35 Prince St.
Dial 892-2270

FILMS
All Types

- Souvenirs
- Toiletries — most all makes
- Bathing Caps
- Swim Goggles and fins

PRESCRIPTIONS PROMPTLY FILLED
Dial 9237

FOLEY'S DRUG STORE
303 Water St. S'tide

BAY VISTA MOTOR INN
Route 6 (One Mile West Cavendish National Park)

Licensed Dining Room and Lounge

Dancing July 8 and August Friday and Saturday nights. Catering to private parties, banquets, weddings, etc. Coin Operated Laundromat

NORTH RIVER DRIVE-IN

Movies Rain or Shine
Try Our Snack Bar

3 miles from Ch'town on the Trans-Canada Highway to Borden.

AND YOU FORGOT TO BUY FILM!

For the Best Shows on P. E. I. visit

STAR-LATE DRIVE-IN
3 miles east of Summerside

FOR ALL GROCERY

Your Picnic Needs

MacLEAN'S GROCERY
Windsor, P.E.I.

RIVER VIEW ESSO SERVICE
15 Miles from Borden

CRAPAUD, P.E.I.

BEFORE the wool comes to Condon's Woolen Mill

AFTER it has been to Condon's Woolen Mill

Visitors Welcome

- Yarns
- Blankets
- Auto Robes
- Island Tartan Blankets

Made of 100% Virgin Wool

WM. CONDON AND SONS
65 Queen St. Dial 4-8713
Charlottetown

Glover's Deep Sea Fishing
Savage Harbour
Two Trips Daily 8 a.m. and 2 p.m.
Reasonable Rates
Phone Mt. Stewart 1-3

DRURY LANE STEAK HOUSE
Aulac, N.B. I.P.
A must on your trip. Straightly across No. 2 Highway at P.E.I. and N.B. Tourist Bureau at the entrance of Port Beauport.

GOLF AT GREEN GABLES
Cavendish
Equipment for Rent at Pro Shop.
Take the opportunity to play one of Canada's finest courses.

S. R. Johnston Ltd.

FREE Tumblers
Free P. E. I. Centennial Tumbler. This is a high quality giveaway with each \$4.00 purchase of gasoline.
Agents for Tilden Rent a Car Service

S. R. JOHNSTON LTD.
FINA Station
St. Peters Rd. Parkdale
For Ice and Rental Service
Phone 2-1632

Charlotte town's Most Up To Date RESTAURANT

151 Kent St.
Phone 4-7635

Milton's Old Spain

For the Best Shows on P. E. I. visit

STAR-LATE DRIVE-IN
3 miles east of Summerside

FOR ALL GROCERY

Your Picnic Needs

MacLEAN'S GROCERY
Windsor, P.E.I.

RIVER VIEW ESSO SERVICE
15 Miles from Borden

CRAPAUD, P.E.I.

BEFORE the wool comes to Condon's Woolen Mill

AFTER it has been to Condon's Woolen Mill

Visitors Welcome

- Yarns
- Blankets
- Auto Robes
- Island Tartan Blankets

Made of 100% Virgin Wool

WM. CONDON AND SONS
65 Queen St. Dial 4-8713
Charlottetown

Glover's Deep Sea Fishing
Savage Harbour
Two Trips Daily 8 a.m. and 2 p.m.
Reasonable Rates
Phone Mt. Stewart 1-3

THE RANCH HOUSE
Gift Shop
Staple, P.E.I. Handicrafts, Souvenirs, Gifts, Confections, Cigs, etc.
OPEN DAILY 10 a.m. to 10 p.m.

FOR YOUR VACATION NEEDS

Wood-based panel products, plywood and fireproof products have all shown tremendous rises in sales and thereby have thrown an even greater strain on current timber supplies.

In 1950 Europe was self-sufficient in timber supplies. By 1960 imports exceeded exports by some 20,000,000 cubic metres worth about \$750,000,000.

This year imports are expected to exceed \$1,000,000,000 a figure which will be doubled sharply by 1975 if the present trend continues.

The report suggested that the huge forest reserves of the Soviet Union and North America could satisfy much of the extra demand.

The report said that consumption of industrial round-

J. & S. Store Ltd.

infants to teens specialty store

- authentic vicella tartans
- other exclusive lines for children & teens.

Water Street
Summerside

FLYING

Sightseeing Recreational Flying
Piper Instruction Aircraft Rentals

ISLAND FLYING SERVICE
PHONE 892-3711

BELL'S BOOK & NOVELTY STORE
Souvenirs, Postcards, Book China, Greeting Cards, Stationery, Books, Magazines, etc.
14 Summer St. Summerside

WELCOME TOURISTS

Your Bank for speedy efficient service is the Bank of Montreal with two offices to serve you. Main Branch — 105-7 Grafton St., Charlottetown, across the street from Confederation Centre Theatre. Parkdale, P. E. I. — Corner St. Peters Road and Palmer's Lane on Route 2 where ample parking is always available.

SUNTAN LOTIONS

- FIRST AID NEEDS
- FILMS
- SOUVENIRS

SHERWOOD DRUG SUNDRIES
Sherwood Shopping Centre

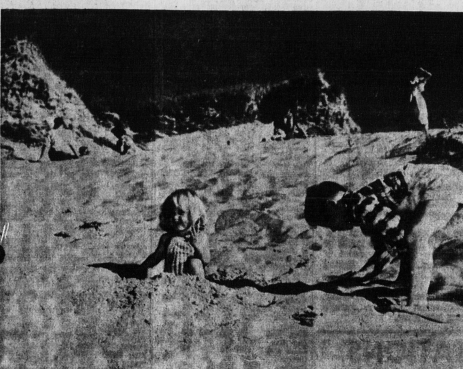
FASHIONS ARE TO PLAY IN

The latest styles of Swim Suits, Shorts and Slacks are found at—

The Misses
HOLMES & BRADLEY
Queen Street Charlottetown

"GIFTARAMA"

The Island's Largest Gift House
Opposite Guardian — Patriot, Prince St. Ch'town



Moore & McLeod Ltd.

- LADIES WEAR
- MEN'S WEAR
- CHILDREN'S WEAR
- HOUSE FURNISHINGS
- TARTANS
- SOUVENIRS

Quality merchandise

Moore & McLeod Ltd.
Your Favorite Shopping Centre

119 QUEEN ST. CHARLOTTETOWN

IF IT'S FISH, AND CAN BE CAUGHT — "WE HAVE IT!"

Queen St. Meat Market
223 Queen St. Dial 4-7355
Free Delivery

HARNES RACING

No Race
Wednesday
July 22nd.

Summerside
Racing Assn.

Clinton Heights MOTOR HOTEL
3 miles from Cavendish on route 6

- Deluxe Units
- Licensed Dining Room & Lounge
- TV and Phone

For Reservations

Phone
New London 36

The Real TASTE TREAT

Take time out for a delicious shake, sundae or cone. From our brazier try hamburgs, hot dogs, Fishcakes.

Conveniently Located on Elm Ave.

SUN TAN CREAMS LOTIONS

See these dependable druggists for complete prescription service and all your vacation needs.

Jenkins Pharmacy
61 George St.

Reddin Bros.
132 Richmond St.

Temple's Pharmacy
178 Queen St.

BUYING FURNITURE FOR THE FOLKS AT HOME

Archer & MacDonald Ltd.
Open 'til 9 every night
Parkdale Dial 4-6345

Camper's Supplies
Buying or Renting

RENT-A-TENT
46 St. Peter's Road
(Route No. 2 to the beaches)
Ch'town 892-2348

Shore Acres Motel
1 1/2 Miles from Corwall on Route 19.
7 miles from Ch'town

Spacious Dining Room
OPEN DAILY

Luncheon 12 — 2 p.m.
Dinner 5:30 — 8:30

Catering to Banquets and Wedding Receptions.

Luxurious accommodations for guests.
30 units with private bath.
Dial 894-7653

Dairy Queen

The Real TASTE TREAT

Take time out for a delicious shake, sundae or cone. From our brazier try hamburgs, hot dogs, Fishcakes.

Conveniently Located on Elm Ave.

SUN TAN CREAMS LOTIONS

See these dependable druggists for complete prescription service and all your vacation needs.

Jenkins Pharmacy
61 George St.

Reddin Bros.
132 Richmond St.

Temple's Pharmacy
178 Queen St.

Jewell's "Country Garden"
Rte. 25 York, P.E.I.
NEAR STANHOPE

- Illuminated water fountain
- Lily Pond
- Curtis House
- Queen's Crown
- GIFT SHOP

Open daily except Sundays
"Something different to see"

Woodleigh Replicas

A Glimpse of Britain in P.E.I.

Located at Burlington near Kensington.
Open Daily Except Sundays

CARD SHOP

Grafton St. City

ADELLA'S
dramatic HATS for now and Fall
177 Grafton St. Ch'town

Kennedy's

Ladies' fashions of distinction

One sixty-six Queen
Charlottetown

PARKDALE PHARMACY
open daily 'til 10 p.m.
St. Peters Road Parkdale

TARTAN SKIRTS AND STRIDES

- Bulky Sweaters
- Mohairs, wools

THE FASHION SHOPPE
Open All Day Saturday
141 St. George St. Charlottetown

A "MUST" — a visit to STRATHGARTNEY HOMESTEAD

Camper's Supply Store, Gifts, Novelties

A prominent old homestead dating back to 1848 complete with much of its original furniture!

On Route 1 adjacent Strathgartney Park
Scenic Beauty — Fishing

THE B. & J. COFFEE SHOP AND Candlelight Room
TASTY FOOD, PROPERLY SERVED IN PLEASANT SURROUNDINGS
ALBERTON P.E.I.

CHINESE FOOD

- Snack Bar Service
- Full Course Meals
- Take Out Orders Situated up-town

ISLAND GRILL
Queen St. Ch'town

TOURISTS
For Your Groceries, Fruits and Vegetables
S. N. KAYS
87 Pownal St. Ch'town

Zenith Park Motel

On TCH just inside Centennial Arch on way from Borden

Housekeeping and overnight accommodation at reasonable rates

Dial 4-8506 and place your message before thousands of tourists.

Kennedy's

Ladies' fashions of distinction

One sixty-six Queen
Charlottetown

PARKDALE PHARMACY
open daily 'til 10 p.m.
St. Peters Road Parkdale

TARTAN SKIRTS AND STRIDES

- Bulky Sweaters
- Mohairs, wools

THE FASHION SHOPPE
Open All Day Saturday
141 St. George St. Charlottetown

A "MUST" — a visit to STRATHGARTNEY HOMESTEAD

Camper's Supply Store, Gifts, Novelties

A prominent old homestead dating back to 1848 complete with much of its original furniture!

On Route 1 adjacent Strathgartney Park
Scenic Beauty — Fishing

THE B. & J. COFFEE SHOP AND Candlelight Room
TASTY FOOD, PROPERLY SERVED IN PLEASANT SURROUNDINGS
ALBERTON P.E.I.

CHINESE FOOD

- Snack Bar Service
- Full Course Meals
- Take Out Orders Situated up-town

ISLAND GRILL
Queen St. Ch'town

TOURISTS
For Your Groceries, Fruits and Vegetables
S. N. KAYS
87 Pownal St. Ch'town

Zenith Park Motel

On TCH just inside Centennial Arch on way from Borden

Housekeeping and overnight accommodation at reasonable rates

Dial 4-8506 and place your message before thousands of tourists.

Kennedy's

Ladies' fashions of distinction

One sixty-six Queen
Charlottetown

PARKDALE PHARMACY
open daily 'til 10 p.m.
St. Peters Road Parkdale

TARTAN SKIRTS AND STRIDES

- Bulky Sweaters
- Mohairs, wools

THE FASHION SHOPPE
Open All Day Saturday
141 St. George St. Charlottetown

A "MUST" — a visit to STRATHGARTNEY HOMESTEAD

Camper's Supply Store, Gifts, Novelties

A prominent old homestead dating back to 1848 complete with much of its original furniture!

On Route 1 adjacent Strathgartney Park
Scenic Beauty — Fishing

British Woolen Sweaters

- Furs
- Sportswear

island furriers Ltd.
The Ultimate in Fashion

79 GRAFTON ST. Dial 2-1273