

# COLISEUM -- NEW MAIN EXHIBITION BUILDING

**CONGRATULATIONS TO  
THE DIRECTORS OF THE CHARLOTTETOWN DRIVING  
PARK AND EXHIBITION ASSOCIATION**

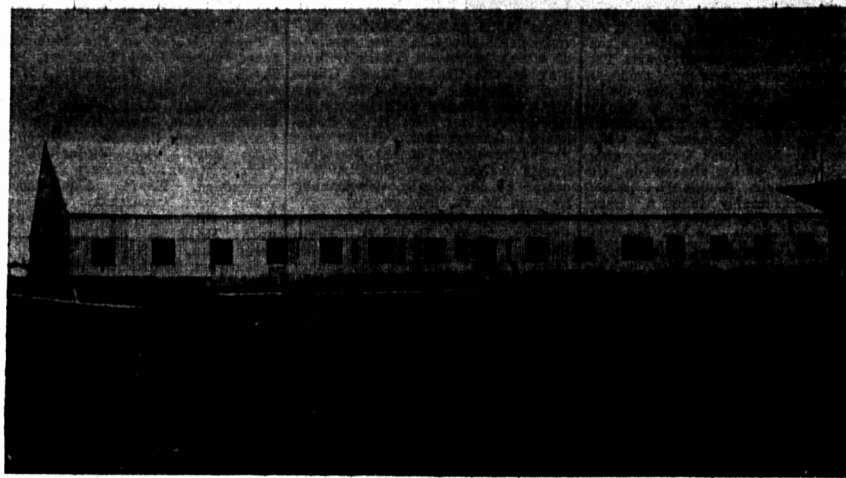
**UPON THE  
COMPLETION AND OPENING  
OF THEIR  
NEW ARENA BUILDING**

**MAY IT SERVE AS A NOTABLE CONTRIBUTION  
TO THE DEVELOPMENT OF THE AGRICULTURAL  
INDUSTRY IN THIS PROVINCE.**

**IT WAS OUR PRIVILEGE TO SERVE AS THE GENERAL CON-  
TRACTOR FOR THE COMPLETE CONSTRUCTION AND ERECTION  
OF THIS FINE BUILDING.**

**County Construction Co., Ltd.**

97 WATER STREET CHARLOTTETOWN DIAL 9535



The recently completed agricultural building on the Exhibition Grounds, (above) marks a step forward in the achievements of the Board of Directors under their President, Dr. J. P. Lantz. Mr. H. J. Kennedy, Vice President and General Manager of the Driving Park and Provincial Association has been untiring in his determination to have the building completed and ready for use this week, as a show arena for cattle and horses. Later, when the seating is provided, approximately 3500 patrons will be able to enjoy any show presented, in perfect comfort.

The building, which was erected by the County Construction Company is of steel and concrete, and has a length of 225 feet and a width of 150 feet, with a show ring, when fully complete 190 feet by 90 feet.

**MEET US AT THE**

**-DETH**

**BOOTH**

**AT THE 1954 EXHIBITION  
TO TALK OVER YOUR PESTICIDE  
PROBLEMS**

Rats - Mice - Flies - External Parasites on Livestock -  
Plant Insects - Household Insects, are our specialty.  
Our business is to reduce your Profit-Reducing Pests.



**6 NIGHTS, 3 BIG DAYS  
OLD HOME WEEK**

**and  
PROVINCIAL EXHIBITION**

**Opening Ceremonies**

**MONDAY at 7 p. m.  
(ALL TIMES STANDARD)**

**Speakers will include - -**

DR. J. P. LANTZ, President of the Charlottetown Driving Park and Provincial Exhibition Association.

THE HON. T. W. L. PROWSE, Lieutenant Governor of the Province.

HON. A. W. MATHESON, Premier of the Province.

HIS WORSHIP MAYOR J. D. STEWART, Mayor of the City of Charlottetown.

W. R. SHAW, retired deputy Minister of Agriculture.

CYRUS EATON, Industrialist, Banker and Farmer, will officially open the 1954 "Old Home Week" celebration.

## HARNESS HORSE RACING

The program this year calls for racing every evening Monday to Friday and afternoon cards Tuesday, Wednesday and Thursday. Racing times are 8:30 and 1:30. Some highlights are:

**MONDAY NIGHT—  
NO. 1 FREE-FOR-ALL.**

**TUESDAY NIGHT—  
2:19 TROT.**

**THURSDAY AFTERNOON—  
NO. 2 FREE-FOR-ALL**

**FRIDAY NIGHT—  
FREE-FOR-ALL TROT**

## LIVE STOCK

Livestock-judging will open Tuesday at 8 a.m. and follow through each day until completed.

### CATTLE

TUESDAY, 8 a.m.—Jerseys, Ayrshires, Herefords, Red Polls and Angus.

WEDNESDAY, 8 a.m. — Holsteins, Shorthorns, Guernseys.

THURSDAY, 8 a.m. — Any unfinished classes.

### HORSES

TUESDAY, 9 a.m. — Standard Bred Horses, Roadsters.

WEDNESDAY, 9 a.m. — Clydesdales, Percherons.

THURSDAY, 9 a.m. — Belgians, Draft Horses, General Purpose.

## VAUDEVILLE

The Vaudeville program will open Monday evening with performances Tuesday evening, Wednesday evening, Thursday evening and also matinee shows Wednesday and Thursday.

## THE MIDWAY

Fun on the Midway will be provided again this year by the ever popular Bill Lynch Shows. There will be fun for all, young and old, in the latest rides, feature shows and side shows.

## WOMEN'S INSTITUTES

Handicraft, home cooking and preserving and a flower display will be exhibited in the Women's Institute Show Building at the Fair. The large list of entries attests to the growing popularity of this feature of OLD HOME WEEK.



VISIT OUR

**SHUR-GAIN**

**DISPLAY BOOTH**

IN THE

**NEW COLISEUM**

CHARLOTTETOWN

DURING OLD HOME WEEK

AND DISCUSS YOUR FEEDING  
PROBLEMS WITH MEMBERS OF

**THE SHUR-GAIN**

FEED MANUFACTURERS ASSOCIATION

**WE CORDIALLY INVITE ALL VISITORS  
TO SEE OUR BUILDING SPECIALITIES**

**PLYWOODS  
FOR ALL  
PURPOSES**

**WEISER LOCKS  
FOR RESIDENTIAL  
DOORS**

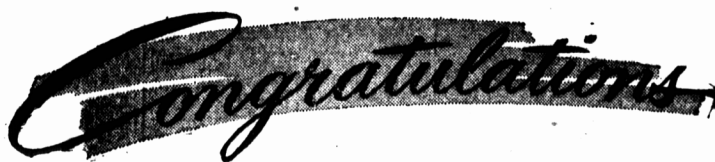
**EBORITE  
for KITCHEN WALLS,  
COUNTER TOPS, etc.**

**BERRY  
ALL STEEL  
GARAGE DOORS**

**CHANDLER BROS.**

1 PLYWOOD PLACE, CH'TOWN.

DIAL 6557



To the Directors of the Charlottetown Driving Park and Exhibition Association upon the Completion and Opening of their

**NEW COLISEUM**

See Our Exhibit of...

- \* PHILCO REFRIGERATORS
- \* EASY WASHERS
- \* GAR WOOD HOT AIR HEATING
- \* YOUNGSTOWN KITCHEN SINKS
- \* INGLIS AUTOMATIC WASHERS AND DRYERS
- \* MacDOUGALL AND BEATTY WATER SYSTEMS

**DOUGLAS BROS. & JONES Ltd.**

**WHEN AT THE FAIR**

YOU WILL WISH

TO VISIT

**The COLISEUM Building**

BE SURE

TO SEE THE FULL LINE OF

**Fawcett**

PRODUCTS

**KITCHEN RANGES** — Using as fuel Oil - Coal - Wood - Gas - Electricity and the Combination.

**SPACE HEATERS** — Using as fuel, Oil - Coal - Wood.

**FURNACES** — Cast iron or boiler plate steel—Pipeless, Pipe, Forced Air using as fuel, Oil - Coal - Wood.

**OIL BURNERS** — for installation in your present furnace.

IN SPACE OCCUPIED BY

**CROCKETT & STOREY Ltd.**