

PRINCE COUNTY OFFICE
3 Summer Street, Summerside, P.E.I.
News, Subscriptions, Advertising, Representatives
J. ELMER MURPHY and GEORGE CLOW
House Phones: 8083 and 8082.
The Guardian may be bought at any of the following stores in Summerside:

WE ARE your Kem Tone and Kem Glo dealers. Summerside Hardware Co.
METAL VENETIAN BLINDS made to order. Delivery approximately three days. MacKenzie & Co., Kensington.

KENSINGTON Presbyterian players present their Three Act Comedy "Ready Made Family" in Wilnot Hall on Tuesday, May 16th at 8.30.

CATHOLIC WOMEN'S League card party. Town Hall, Kensington, Wednesday, May 17th. Luncheon included.

COMING! Original Spring Rexall One Cent Sale, Thursday, Friday, Saturday, May 18, 19 and 20. Gourlies Rexall Drug Store.

SEE "Bringing Up Mother" by Kensington players in Craupad Hall, Monday, May 22 at 8 p.m. Sponsored by the Augustine Cove Women's Institute. Sale of candy.

Captain John L. Read of Boston is seriously ill in the Prince County Hospital, Summerside. He entered the hospital on Sunday.

BIG ORIGINAL Spring Rexall One Cent Sale, Thursday, Friday and Saturday, May 18, 19 and 20. Gourlies Rexall One Cent Sale.

HOUSEWIVES take the drugery out of Spring house cleaning by renting our Electric Floor Polisher. Minimum charge 50c per half day. MacKenzie & Co., Kensington.

SEE Kensington players in "Bringing Up Mother" Central Bedouque Hall, Tuesday, May 23. Admission 50 and 25 cents. Sale of candy.

COME TO Malpeque Hall, Wednesday, May 17th. Spring Valley players present "The Path Across the Hill" at 8.30. Specialties. Sponsored by Malpeque Presbyterian Ladies Aid. Sale of Luncheon.

LEFT YESTERDAY—Mr. R. Grant Mollison, Summerside, left yesterday for R.C.A.F. Station, Greenwood, N.S., where he will supervise a station street building program. He expects to be away about six weeks.—S.

SUMMERSIDE CHURCH Y. P. S.—The Y. P. S. of the Summerside Church of the Nazarene held its regular meeting on Friday evening with Rev. Kenneth MacMillan in charge of the devotion after the singing of several choruses, with Miss Edna Lewis at the piano. Prayer was offered by Mr. Heber MacMillan. Mrs. A. M. Parlee, who read the Scripture lesson, gave an interesting talk on the "Advantages of Good Living". During the business session over which Miss Lewis presided, a special offering was taken to purchase new collection plates. After the singing of a number of hymns, Rev. K. MacMillan closed with prayer.—S.

DEBATE TONIGHT—Freetown and Lot 16 Junior Farmers debaters will clash in the Prince County final at Summerside this evening. The winners will advance to compete against the Queens and Kings County winners for the Island Junior Farmers debating championship. The chairman is Rev. Dr. S. Price, Lot 16. The judges are James R. Murphy, president of the P.E. Island Teachers' Federation, Mr. Cyrus Poirer, president of the P.E. Island Credit Union League and secretary of the Prince County Federation of Agriculture and Rev. Burton Crowe, Bedouque. Mr. David Peacock, of the Provincial Department of Agriculture will introduce the chairman. Those debating from Freetown are: William Cairns, Ruth Wright, Margaret Carruthers. From Lot 16: Wendell Burch, Hanley Gamble, Gordon Yeo. The debate will be heard over the local radio station.—S.

FOR SALE—Half ton Chevrolet light delivery trucks for sale or trade for new trucks. BRACE MacKAY, CO. LTD. Summerside

WAYS TO AVOID HARSH LAXATIVES—The harsh laxatives I used to take are on a forgotten shelf since I began eating KELLOGG'S ALL-BRAN regularly. This good cereal has done wonders for me! This from Mrs. M. Wetli, 35 Hunt Club Drive, Toronto 13, Ontario. One of many unsolicited letters. Are you suffering from constipation due to lack of bulk in the diet? Try this for lasting relief. Eat an ounce of crispy ALL-BRAN daily, drink plenty of water. If not completely satisfied with results after 10 days, send empty box to Kellogg's, London, Ont. Get DOUBLE YOUR MONEY BACK!

FOR SALE—Nine room home at 196 Duke Street, facing Beaver, divided into two large modern apartments, completely self contained with separate entrances. Hot water heating with new oil burner, heavy wiring for electric stoves. Hardwood throughout. Early possession arranged. Phone 7603 or 7604 or write F/L Dibble or F/L Orchard, Box 629, Summerside.

FOR SALE—See the Maritime Life plan TODAY! T. W. Bentley, C.L.U., Mgr. P.E.I. Branch, Charlottetown, P.E.I.

FOR SALE—Nine room home at 196 Duke Street, facing Beaver, divided into two large modern apartments, completely self contained with separate entrances. Hot water heating with new oil burner, heavy wiring for electric stoves. Hardwood throughout. Early possession arranged. Phone 7603 or 7604 or write F/L Dibble or F/L Orchard, Box 629, Summerside.

IMPROVED CONDUCT—WINNIPEG. (CP)—Winnipeg's high school students have been handed a bouquet by trustee Mrs. E.R. Tennant to balance a brick-bat she threw at them recently. She said she found their conduct at a Winnipeg symphony concert "something quite different" from the "objectionable" way they had acted at a previous concert of the Minneapolis Symphony.

Monthly Meeting S'side Legion—At the regular monthly meeting of Summerside Branch, Canadian Legion held last evening in the Legion club room, it was reported that an option has been taken on the property of Mr. Keith Compton on Central Street and a motion was passed that a special general meeting be held on Thursday, May 26th to consider the purchase of this or some other property and the erection of a Legion home.

PERSONALS—Mr. William Nicholson was arrested from Mount Allison University to spend his vacation with his parents, Mr. and Mrs. Ewen Nicholson, Summerside.—S.

PERSONALS—Miss Patricia Saunders, teacher of music in the Summerside High School, spent the week-end at her home in Alma, N. B.—S.

PERSONALS—Mr. Alan Stewart, student at Acadia University has arrived in Summerside to spend his vacation with his parents, Mr. and Mrs. D. O. Stewart.—S.

PERSONALS—Mrs. Alex Mathieson and daughter Judy left Summerside on Saturday morning for Halifax, N. S. to join her husband who has been transferred from the local branch of the Canadian Bank of Commerce to Halifax.—S.

PERSONALS—Mrs. Russell Lewis of Summerside who has been a patient in Prince County Hospital for the past two weeks, is now convalescing at her home.—S.

PERSONALS—Mrs. Edward Bowen of Medford, Massachusetts returned to her home after nursing her sister, Mrs. Russell Lewis, in Prince County Hospital.—S.

"EASTER PARADE" AT CAPITOL, SUMMERSIDE—Judy Gariand follows up her big success in "Easter Parade" with another delicious romantic comedy, "The Good Old Summer" this time co-starred with Van Johnston and with that amiable character actor, S. Z. "Cuddles" Sakall, having a prominent part in the proceedings. Of added interest is the fact that the new M-G-M Technicolor offering, now on view at the Capitol Theatre, marks the return of Buster Keaton, famed comedy star of silent films, who proves himself to be as funny as ever in the role of a blundering music store clerk.

Two Dakotas Back From Winnipeg—Two of the three Dakota aircraft that took off from Summerside on Saturday for Winnipeg arrived back yesterday morning. They had gone by way of Halifax where they took on supplies of stretchers which they delivered at the Winnipeg airport. It is thought that the third plane may return today, but it could be retained for further service there.—S.

SHOULD RETAIN—Continued from page 1. reductions under the M.F.R.A. and wider coverage in the type of traffic to which it is applicable.

SHOULD RETAIN—Continued from page 1. That statute now gives Federally-subsidized reductions of 20-per cent on all-rail traffic within the Maritimes and on the Maritime part of westbound traffic originating in Brunswick.

SHOULD RETAIN—Continued from page 1. Both the New Brunswick and Maritime Commission arguments emphasized the claim that it was essential to the economy of the Maritimes that the impact of general percentage rate increases should be lessened for the rail traffic affecting that area.

SHOULD RETAIN—Continued from page 1. Both bodies proposed amendments to the Railway Act, differing in language but having about the same effect, which would order the rate-regulating Board of Transport Commissioners to restore rate relationships existing before the post-war series of freight increases.

SHOULD RETAIN—Continued from page 1. It was their contention that the percentage-type increases reacted particularly against long-haul traffic, imposing more of a dollars-and-cents burden on it than on short movements in the Central Provinces. This was accentuated, it was argued, because competition tended to hold down rates in Ontario and Quebec.

SHOULD RETAIN—Continued from page 1. Their amendments also would have the board, in future rate adjustments, take into account such factors as the effect of rates on the development of industry, on

the marketing of products and on the general economy of a region. New Brunswick also proposed that the Board would consider the effect on consumers.

M.F.R.A. Amendments—OTTAWA, May 15—(CP)—The Canadian Manufacturers' Association today supported demands for a contributory old-age pension system in Canada, but expressed opposition to requests that the pensionable age be reduced from 70 to 65 years.

Contributory Old Age Pensions At 70—OTTAWA, May 15—(CP)—The Canadian Manufacturers' Association today supported demands for a contributory old-age pension system in Canada, but expressed opposition to requests that the pensionable age be reduced from 70 to 65 years.

Contributory Old Age Pensions At 70—OTTAWA, May 15—(CP)—The Canadian Manufacturers' Association today supported demands for a contributory old-age pension system in Canada, but expressed opposition to requests that the pensionable age be reduced from 70 to 65 years.

Contributory Old Age Pensions At 70—OTTAWA, May 15—(CP)—The Canadian Manufacturers' Association today supported demands for a contributory old-age pension system in Canada, but expressed opposition to requests that the pensionable age be reduced from 70 to 65 years.

Contributory Old Age Pensions At 70—OTTAWA, May 15—(CP)—The Canadian Manufacturers' Association today supported demands for a contributory old-age pension system in Canada, but expressed opposition to requests that the pensionable age be reduced from 70 to 65 years.

Contributory Old Age Pensions At 70—OTTAWA, May 15—(CP)—The Canadian Manufacturers' Association today supported demands for a contributory old-age pension system in Canada, but expressed opposition to requests that the pensionable age be reduced from 70 to 65 years.

Contributory Old Age Pensions At 70—OTTAWA, May 15—(CP)—The Canadian Manufacturers' Association today supported demands for a contributory old-age pension system in Canada, but expressed opposition to requests that the pensionable age be reduced from 70 to 65 years.

Contributory Old Age Pensions At 70—OTTAWA, May 15—(CP)—The Canadian Manufacturers' Association today supported demands for a contributory old-age pension system in Canada, but expressed opposition to requests that the pensionable age be reduced from 70 to 65 years.

Contributory Old Age Pensions At 70—OTTAWA, May 15—(CP)—The Canadian Manufacturers' Association today supported demands for a contributory old-age pension system in Canada, but expressed opposition to requests that the pensionable age be reduced from 70 to 65 years.

Contributory Old Age Pensions At 70—OTTAWA, May 15—(CP)—The Canadian Manufacturers' Association today supported demands for a contributory old-age pension system in Canada, but expressed opposition to requests that the pensionable age be reduced from 70 to 65 years.

Contributory Old Age Pensions At 70—OTTAWA, May 15—(CP)—The Canadian Manufacturers' Association today supported demands for a contributory old-age pension system in Canada, but expressed opposition to requests that the pensionable age be reduced from 70 to 65 years.

Contributory Old Age Pensions At 70—OTTAWA, May 15—(CP)—The Canadian Manufacturers' Association today supported demands for a contributory old-age pension system in Canada, but expressed opposition to requests that the pensionable age be reduced from 70 to 65 years.

Contributory Old Age Pensions At 70—OTTAWA, May 15—(CP)—The Canadian Manufacturers' Association today supported demands for a contributory old-age pension system in Canada, but expressed opposition to requests that the pensionable age be reduced from 70 to 65 years.

Contributory Old Age Pensions At 70—OTTAWA, May 15—(CP)—The Canadian Manufacturers' Association today supported demands for a contributory old-age pension system in Canada, but expressed opposition to requests that the pensionable age be reduced from 70 to 65 years.

Contributory Old Age Pensions At 70—OTTAWA, May 15—(CP)—The Canadian Manufacturers' Association today supported demands for a contributory old-age pension system in Canada, but expressed opposition to requests that the pensionable age be reduced from 70 to 65 years.

Contributory Old Age Pensions At 70—OTTAWA, May 15—(CP)—The Canadian Manufacturers' Association today supported demands for a contributory old-age pension system in Canada, but expressed opposition to requests that the pensionable age be reduced from 70 to 65 years.

Contributory Old Age Pensions At 70—OTTAWA, May 15—(CP)—The Canadian Manufacturers' Association today supported demands for a contributory old-age pension system in Canada, but expressed opposition to requests that the pensionable age be reduced from 70 to 65 years.

Contributory Old Age Pensions At 70—OTTAWA, May 15—(CP)—The Canadian Manufacturers' Association today supported demands for a contributory old-age pension system in Canada, but expressed opposition to requests that the pensionable age be reduced from 70 to 65 years.

St. John's Lady To Be Honored—LONDON, May 15—(CP)—The Insignia, Dame of Grace of the Order of St. John, will be conferred on Mrs. Eleanor B. MacPherson, 79, of St. John's, Nfld., at a special investiture here this Thursday.

GRADUAL DROP—Continued from page 1. men at his daily conference in flood control headquarters that he feels it is a "fair estimate" to say that 80,000 persons have left the greater Winnipeg area since he issued an appeal last Tuesday for widespread evacuation.

GRADUAL DROP—Continued from page 1. Other flood developments today: 1. Justice Minister Garson gave the House of Commons in Ottawa some details of the so-called "plan." It was drawn up by a military-civilian committee to cover any eventualities, including full evacuation of greater Winnipeg if the Red should rise to 32.5 feet.

GRADUAL DROP—Continued from page 1. 2. It was reported a special session of the Manitoba Legislature will be called in a few months to approve flood-relief legislation. Winnipeg City's own flood-relief committee demanded that the province announce its rehabilitation plans.

GRADUAL DROP—Continued from page 1. 3. Mayor George MacLean of St. Boniface, across the Red River, said only about 1,000 women, children, aged and sick remain in St. Boniface and its Northward suburb following evacuation of more than 5,000 persons last night and today. Normal population of St. Boniface is 25,000 but two-fifths of the people had left previously.

GRADUAL DROP—Continued from page 1. Gigantic Air Lift—A gigantic air lift will swing into action if total evacuation of Winnipeg's metropolitan area becomes necessary. Officials said it would be possible to move 9,000 persons daily by R. C. A. F. and civilian planes.

GRADUAL DROP—Continued from page 1. D. J. Stephens, Manitoba's deputy minister of Natural Resources, said in an interview that the Red's crest, in the form of a "flat-curve," has been passing the diked cities of Winnipeg and St. Boniface since Sunday.

GRADUAL DROP—Continued from page 1. "I don't anticipate any appreciable rise in the river level from here on if conditions remain as they are." Providing there is no bad weather and no kick-up by Red tributaries, Mr. Stephens forecast, the river's drop will approximately parallel its rise.

GRADUAL DROP—Continued from page 1. On that basis, the Red might be down 1.5 feet by 1 p.m. Saturday from yesterday's high point of 30.2 feet. This would still be more than 12 feet above the flood-risk stage of 18 feet in greater Winnipeg.

GRADUAL DROP—Continued from page 1. Some army officers said the river would have to drop five feet—to about 25 feet—before the risk of dike collapsing was over. But a smaller drop than that would eliminate the danger of inundation of the Winnipeg business area and the need for a general evacuation.

GRADUAL DROP—Continued from page 1. The Red passed flood stage in its upward surge April 21. It may not return within its banks every week until the first or second week of June.

GRADUAL DROP—Continued from page 1. What causes the Red to flood? The answer is the progressive melting of winter snows from south to north, the direction in which the Red flows. Source of the Red is the Minnesota Lake country where the first melting cuts. Ice is still piled up downstream toward Lake Winnipeg, more than 300 miles from its start.

GRADUAL DROP—Continued from page 1. The peak flow of Red tributaries can arrive simultaneously at any point. That is what happened this year—plus extremely heavy rainfall during the early run-off.

GRADUAL DROP—Continued from page 1. SHOULD RETAIN—Continued from page 1. reductions under the M.F.R.A. and wider coverage in the type of traffic to which it is applicable.

GRADUAL DROP—Continued from page 1. That statute now gives Federally-subsidized reductions of 20-per cent on all-rail traffic within the Maritimes and on the Maritime part of westbound traffic originating in Brunswick.

GRADUAL DROP—Continued from page 1. Both the New Brunswick and Maritime Commission arguments emphasized the claim that it was essential to the economy of the Maritimes that the impact of general percentage rate increases should be lessened for the rail traffic affecting that area.

GRADUAL DROP—Continued from page 1. Both bodies proposed amendments to the Railway Act, differing in language but having about the same effect, which would order the rate-regulating Board of Transport Commissioners to restore rate relationships existing before the post-war series of freight increases.

GRADUAL DROP—Continued from page 1. It was their contention that the percentage-type increases reacted particularly against long-haul traffic, imposing more of a dollars-and-cents burden on it than on short movements in the Central Provinces. This was accentuated, it was argued, because competition tended to hold down rates in Ontario and Quebec.

GRADUAL DROP—Continued from page 1. Their amendments also would have the board, in future rate adjustments, take into account such factors as the effect of rates on the development of industry, on

the marketing of products and on the general economy of a region. New Brunswick also proposed that the Board would consider the effect on consumers.

M.F.R.A. Amendments—OTTAWA, May 15—(CP)—The Canadian Manufacturers' Association today supported demands for a contributory old-age pension system in Canada, but expressed opposition to requests that the pensionable age be reduced from 70 to 65 years.

Contributory Old Age Pensions At 70—OTTAWA, May 15—(CP)—The Canadian Manufacturers' Association today supported demands for a contributory old-age pension system in Canada, but expressed opposition to requests that the pensionable age be reduced from 70 to 65 years.

Contributory Old Age Pensions At 70—OTTAWA, May 15—(CP)—The Canadian Manufacturers' Association today supported demands for a contributory old-age pension system in Canada, but expressed opposition to requests that the pensionable age be reduced from 70 to 65 years.

Contributory Old Age Pensions At 70—OTTAWA, May 15—(CP)—The Canadian Manufacturers' Association today supported demands for a contributory old-age pension system in Canada, but expressed opposition to requests that the pensionable age be reduced from 70 to 65 years.

Contributory Old Age Pensions At 70—OTTAWA, May 15—(CP)—The Canadian Manufacturers' Association today supported demands for a contributory old-age pension system in Canada, but expressed opposition to requests that the pensionable age be reduced from 70 to 65 years.

Contributory Old Age Pensions At 70—OTTAWA, May 15—(CP)—The Canadian Manufacturers' Association today supported demands for a contributory old-age pension system in Canada, but expressed opposition to requests that the pensionable age be reduced from 70 to 65 years.

Contributory Old Age Pensions At 70—OTTAWA, May 15—(CP)—The Canadian Manufacturers' Association today supported demands for a contributory old-age pension system in Canada, but expressed opposition to requests that the pensionable age be reduced from 70 to 65 years.

Contributory Old Age Pensions At 70—OTTAWA, May 15—(CP)—The Canadian Manufacturers' Association today supported demands for a contributory old-age pension system in Canada, but expressed opposition to requests that the pensionable age be reduced from 70 to 65 years.

Contributory Old Age Pensions At 70—OTTAWA, May 15—(CP)—The Canadian Manufacturers' Association today supported demands for a contributory old-age pension system in Canada, but expressed opposition to requests that the pensionable age be reduced from 70 to 65 years.

Contributory Old Age Pensions At 70—OTTAWA, May 15—(CP)—The Canadian Manufacturers' Association today supported demands for a contributory old-age pension system in Canada, but expressed opposition to requests that the pensionable age be reduced from 70 to 65 years.

HOLMAN'S "Boys' Shop" Features Fashions For The Young Man of The World!



Boys Be Smart In These NEW TWEED SUITS

Boys' smart Tweed Suits in Wool and Cotton Herringbone weave. Good looking double breasted style. Two pair trousers with usual belt loops, pockets and cuff bottoms. Sizes 24 to 32 for age 6 to 14 years. Moderately priced at

15.95 and 21.50

They Go Together! GREY FLANNELS

Boys' and Students' Grey Flannels. Your choice of All Wool or Wool and Cotton. They're smart, they're neat. Sizes 24 to 36, age for 6 to 18 years. Priced at

4.95 and 6.95

SMART BLAZERS

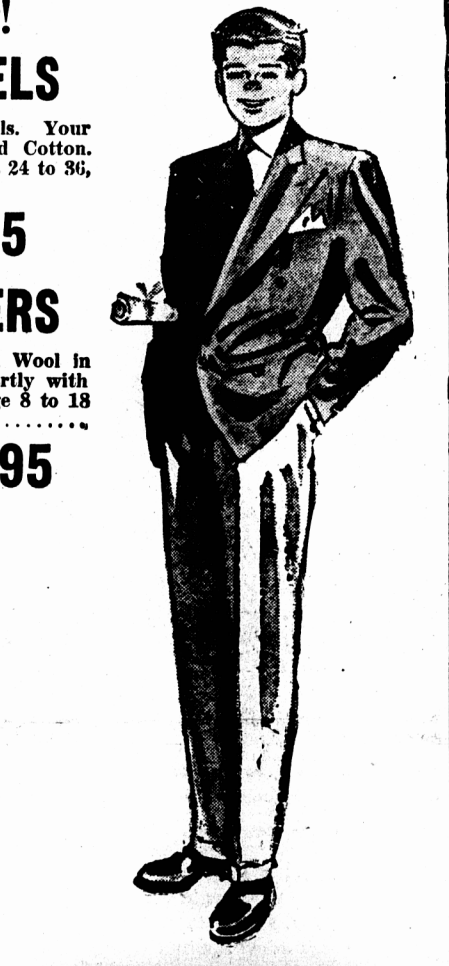
Boys' and Students' Blazers. All Wool in Navy or Wine colors. Worn smartly with Grey Flannels. Sizes 26 to 37, age 8 to 18 years. Priced at

10.95 and 17.95

New Tweed Trousers Boys' Wool and Cotton Tweed Longs, strongly sewn seams, cut full and easy fitting. Slant pockets and cuff bottoms. Variety of shades. Sizes 24 to 34, age 6 to 16 years. Price 3.75

Sateen Windbreakers Boys' new Sateen Windbreakers. Comes in two tone and solid shades. A smart, cool jacket for those summer days ahead. Size range from 8 to 16 years. Priced 5.50 and 5.95

Cotton Windbreakers Boys' Cotton Drill Windbreakers. Deep chocolate shade with knitted cuffs and collar. Another smart vacation jacket. Size range from 8 to 14 years. Priced at 3.95



HOLMAN'S SUMMERSIDE "Where Old Friends Meet"

ment, to work at higher ages than formerly. 2. The lengthening period of education for young people, thus delaying their entrance into the ranks of the producers of wealth. 3. The fact that the pension available at 70 would be more satisfactory than the pension available at 65.

Mr. Sheils said the association envisaged a contributory pension plan where the employer and employee would pay everything except the administrative costs. The administration would be handled and paid for by the Federal Government. Administrative costs might be kept down by using the existing unemployment insurance machinery.

The association had no views as to the rates at which contributions should be fixed or as to the formula for benefits.

INTER-RACIAL AMITY The United Church of Canada embraces representatives of more than 70 racial strains within its membership.

KIDNEY ACIDS Rob your Rest.. Many people never seem to get a good night's rest. They turn and toss—blame it on "nerves"—when it may be their kidneys. Healthy kidneys filter poisons and excess acids from the blood. If they fail impurities stay in the system—disturbed rest often follows. If you don't rest well get and use Dodd's Kidney Pills. Dodd's help the kidneys so that you can rest better—and feel better.

136

Dodd's Kidney Pills

The province of Saskatchewan has eight cities, 83 towns, 400 villages and 308 rural municipalities.