

CAPITOL TODAY — TUE. — WED.

STRIKE UP THE BAND!  
SING OUT THE NEWS!  
MICKEY'S GOT THOSE DRAFT BOARD BLUES!

**MICKEY ROONEY**

**Sound Off**

AWARDS: JAMES SAMMY WHITE JOHN ARCHER

NEWS - SONG REEL - TRAVEL — Shows 3:30 - 7 - 9

THE EASTERN GUARDIAN

AGENTS:—MONTAGUE: Harold F. Landry, Mrs. Byron Stewart, Mrs. Bruce MacPhee, Miss Joyce Wigginton, Miss McKinnon.  
AGENT GEORGETOWN: Waldon Lavers.

The Guardian may be bought at the following places in Montague: Blue Dome Restaurant, and Guardian Office; in Georgetown: The Post Office; in Souris: The Snack Bar and H. Richards & Son.

...INSTITUTE MEETING at the home of Mrs. J. C. MacLure, Tuesday, 8 p. m.

...SEE AUTHENTIC Scottish tartan goods on display in our window then attend Scottish concert February 4th in Montague. Boehner's Jewellers, Montague, P. E. I.

A MESSAGE FROM THE MANAGEMENT OF THE PRINCE EDWARD THEATRE

For our next attraction, the management of this theatre is privileged to present Twentieth Century-Fox's magnificent Technicolor production of Ernest Hemingway's "The Snows of Kilimanjaro."

One of the year's most important motion pictures, "The Snows of Kilimanjaro" is the dramatic story of a novelist and a big game hunter who reviews his life, loves, adventures and frustrations while awaiting possible death near Mt. Kilimanjaro, the highest peak in equatorial Africa. To bring this great Hemingway story to life, Producer Darryl F. Zanuck assigned three of Hollywood's finest stars—Gregory Peck, Susan Hayward and Ava Gardner.

To augment their outstanding portrayals he organized an unusual supporting cast headed by Hildegard Neff, Leo G. Carroll, Torin Thatcher, Ava Noring and Helene Stanley. Directed by Henry King, who gave you "Twelve O'clock High", "Song of Bernadette" and "David and Bathsheba", "The Snows of Kilimanjaro" takes you across the map of Europe to the Spanish bullrings, the French Riviera, Parisian cafes and darkest Africa.

"The Snows of Kilimanjaro" is a monumental film achievement you will not want to miss.

Signed: G. A. WALTERS.

Railway Station At 48 Road Lost In Fire

The Canadian National Railways station at 48 Road was destroyed by fire early Sunday morning.

Thought to have started from an overheated stove, the fire was noticed shortly after midnight. A large crowd assembled but their efforts to save the building were hampered by lack of water.

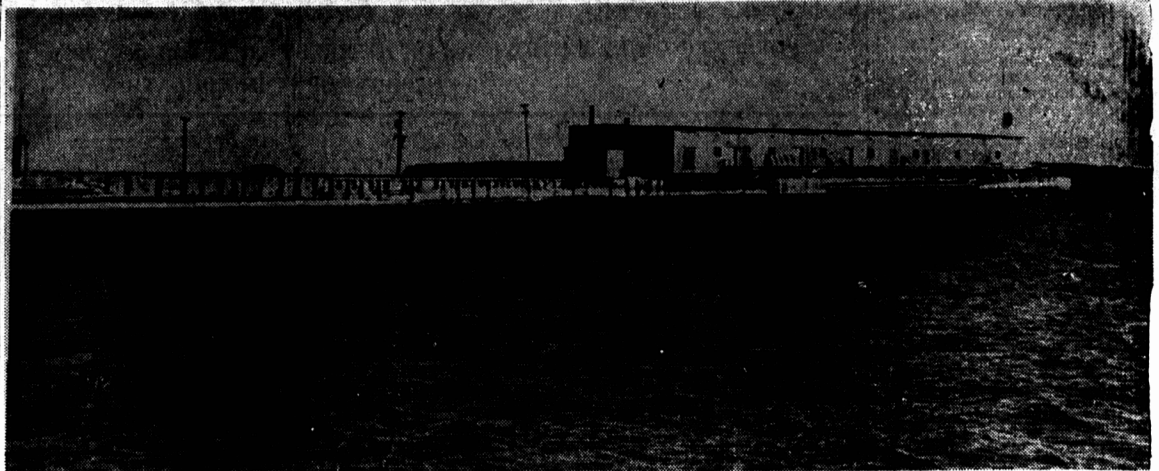
The Montague Fire Department was called but did not leave for the scene owing to impassable roads.

The station built in the early part of the century, was located on the 48 Road, formerly the main road from Central King's to Charlottetown, and was an important shipping station for the area.

ANCIENT FARMERS

Natives in southwest Asia began cultivating cereal crops about 7,000 or 8,000 years ago.

Georgetown Has Many Possibilities As Winter Port For Province



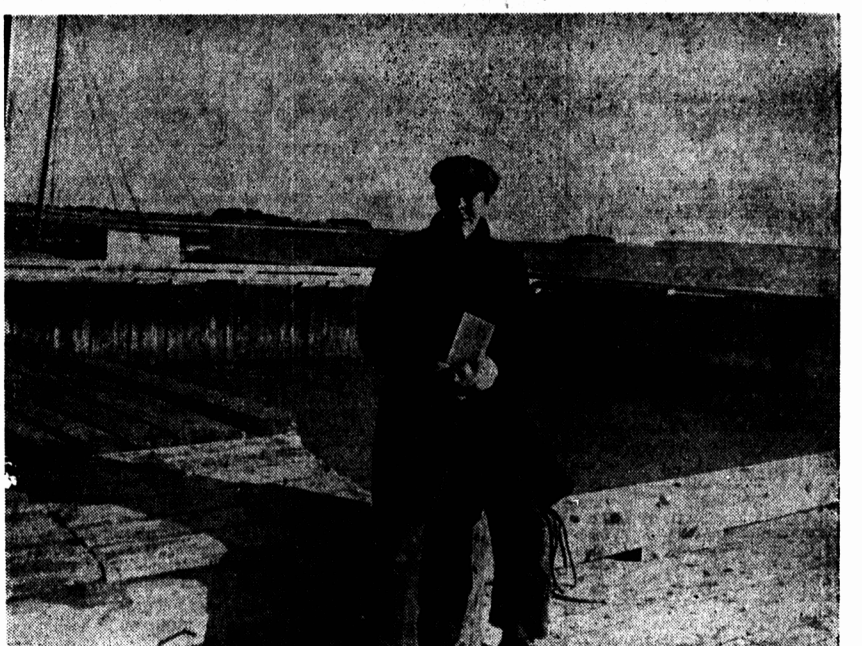
Dominion Government Frost Proof Potato Warehouse

Nfld. Schooner Clears Port On Friday

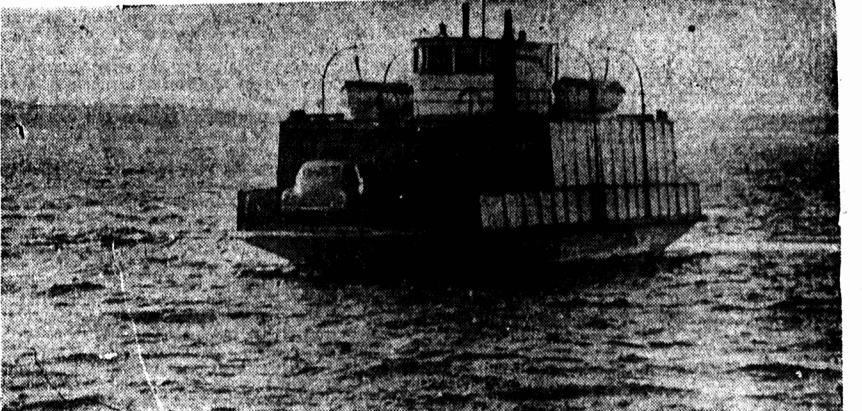
Summer conditions prevail in Georgetown Harbour, Prince Edward Island's winter port. The Newfoundland auxiliary schooner, "Philip E. Lake" which arrived in Georgetown on Wednesday, Jan. 28th, sailed from here on Friday, Jan. 30th, a few hours before the pictures were taken, with a cargo of heavy timber, and produce for Newfoundland.

The Georgetown-Lower Montague ferry is pictured making a crossing as she continues to ply her summer schedule. Also shown is the Dominion Government frost-proof potato warehouse on the Railway Wharf.

Georgetown, which once served as the all-year-round gateway of Prince Edward Island still possesses the natural facilities for water connections with Maritime and world ports. Easily accessible to all points in the Province by railroad and the paved "Jones' Highway", the potential usefulness of this magnificent, land-locked, ice-free, deep water harbour, if developed, would be of inestimable value to the economy and trade of the whole Province.



Capt. John Jerrior, Harbour Master at Georgetown



The Ferry Boat still plies between Georgetown and Lower Montague on Summer schedule. The crew includes, Capt. H. Larsen, Engineer Emmerson Llewellyn and Crewman Wilfred McQuillan.

Morell In 10-8 Win Over Montague Shmohawks

The Morell squad won a hard fought, close checking game 10-8 over the Montague Shmohawks in an exhibition feature played at Montague Saturday night. The two teams were about evenly matched throughout the whole game, although the locals were slow getting underway during the first period, and the visitors took a two goal lead at 5-3. The play evened up during the second session as Montague put on the pressure to hold the visitors on the defensive for the most of the period netting two goals to the visitors one.

Morell scored two quickies in the last period, but Montague came roaring back for three goals to tie the game. From there on it became a battle for the winning goal, and the fans applauded every attempt by either team. Morell on a net scramble slipped the puck in to put them one up at the half way mark. Montague then moved every man forward to get it back and go on to win. But the visitors on a breakaway scored their last at the 19 minute mark to set up the game.

(Clements)	3:31
15—Montague, Stewart	4:55
(Clements)	5:20
16—Montague, Fraser	10:46
17—Morell, J. McInnis (Kelly)	19:04
18—Morell, J. Coffin (Kelly)	
Penalties—Jay Referee, Goodwin.	

ONE OF THE OUTSTANDING PICTURES OF ALL TIME!

THE TRUE STORY OF A FIGHTING FAMILY  
MIDNIGHT SHOWING —  
Tonight at 11:30 p.m., CAPITOL

THE GUTS and GLORY of our FIGHTING FORCES!  
THEY FIGHT BEST when The Chips are down!

**The FIGHTING SULLIVANS**

ANNE BAXTER THOMAS MITCHELL

SUMMARY

First Period

1—Montague, Schurman (Stewart)	2:14
2—Morell, Kelly	8:53
3—Montague, MacLean (Schurman)	9:20
4—Morell, J. McInnis (Keefe)	9:30
5—Montague, Nelson (Lanigan)	12:15
6—Morell, J. McInnis	15:48
7—Morell, R. MacAdam (J. McInnis)	16:05
8—Morell, B. MacAdam (B. MacAdam)	
Penalties—Schurman, Davis	

Second Period

9—Morell, Kelly	8:37
10—Montague, Lanigan (Nelson, MacLean)	11:12
11—Montague, MacLure (Lanigan)	17:40
Penalties—MacLean	

Third Period

12—Morell, R. MacAdam (Kelly)	3:02
13—Morell, Kelly (R. MacAdam)	3:16
14—Montague, Fraser	

HOCKEY

GEORGETOWN RINK TONIGHT  
Georgetown Eagles vs. Charlottetown Rovers  
Game Starts 8:30  
Skate after

HOCKEY

MONTAGUE RINK TONIGHT  
Charlottetown B. Y. C. vs. Montague Shmohawks  
Game starts 8:30

H. J. Mabon R. O.  
Optometrist.  
Eyes Examined  
Fitting and Supplying Glasses, etc.  
Office Hours: 10 to 12 A.M. 2 to 5 P.M. and by appointment.  
Office Connected with Mabon Drug Co. Montague, P. E. I.

FIRST WEEK SMASHES EVERY RECORD IN 35-YEAR HISTORY OF THE BIG "RIVOLI THEATRE", NEW YORK — DON'T MISS IT!

4 GREAT DAYS — STARTING TODAY

20th Century-Fox presents  
ERNEST HEMINGWAY'S GREATEST LOVE STORY

GREGORY PECK · SUSAN HAYWARD · AVA GARDNER

The western summit of the African mountain of Kilimanjaro is called "Ngaje Ngai," the House of God. And he dared not enter it... for his life as his love... had been a sin!

**THE SNOWS of KILIMANJARO**  
TECHNICOLOR

WITH HILDEGARDE NEFF  
PRINCE EDWARD

SHOWING AT 3:30, 7 AND 9  
ADULTS ..... MATINEES 45c; EVENING 75c  
CHILDREN ..... ALL SHOWS 35c