

Report Israel Studying Plans For Huge Rival Suez Canal

JERUSALEM (AP)— Israel is again studying plans for building a canal from the Mediterranean to the Gulf of Aquaba. But the engineering problems make it probable a start soon on a canal which could ultimately compete with Suez.

The authors of the various plans are understood to agree that the most feasible scheme would be a water highway starting from the north of the northern tip of the Egyptian-held Gaza strip. It would run to Eilat, the new Israeli port opposite the Jordan.

Suggest Britain Invest More In Commonwealth

LONDON (Reuters)— Britain must invest more in the Commonwealth if she wants to encourage emigration to its member countries, says a report published by the overseas migration board.

Since the end of the Second World War Canada has not had enough British immigrants to maintain the existing proportion of her population who are of British origin, the board says.

CAVE MAN

The Neanderthal man is considered to have been a branch of mankind that was not in the direct line of human descent.

WOOD ISLANDS-CARIBOU FERRY SERVICE

June 16 to Sept. 26. Daily from each terminal: 7 a.m., 9 a.m., 11 a.m., 1 p.m., 3 p.m., 5 p.m.

Few Polio Cases In New England

BOSTON (AP)— The six New England states — where 86 were dead and 1,601 stricken by polio at this time last year—Wednesday had reported a 1956 total of only 122 cases. There were no deaths reported.

BRITANNIA FLIES US

SAN DIEGO, Calif. (AP)—The world's largest commercial transport airplane, the British-built Bristol Britannia, landed here Tuesday, completing a non-stop flight from New York.

GET YOUR BROWNIE MOVIE CAMERA or OUTFIT HERE details in the BIG Kodak Ad

The Jenkins Pharmacy 250 Great George St. — Dial 4219

PLYWOOD? WE HAVE WHAT YOU NEED CHANDLER BROS. Building Specialties

Experimental Prison Works Well In Ontario

HILLSDALE, Ont. (CP)— Most of the men chosen carefully from reformatory by their records — are serving time for minor offences, but some are repeat offenders who are noted for good conduct in prison.

NOTICE

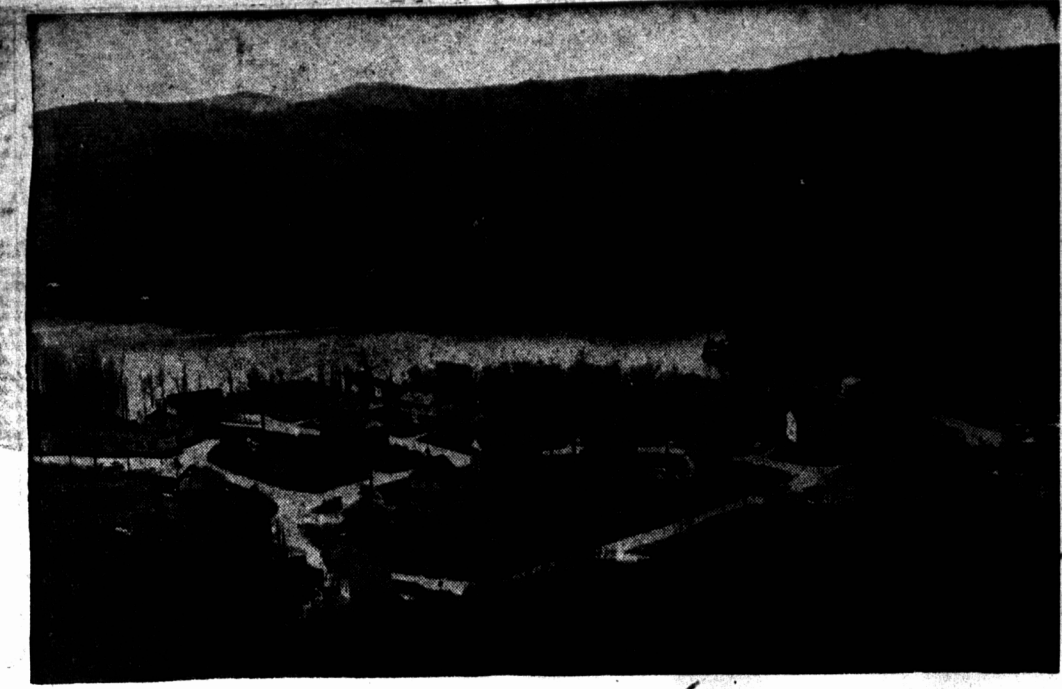
CLOSED TODAY AT 12 NOON CHANDLER BROS. Building Specialties 1 PLYWOOD PLACE DIAL 6557

BLUEBERRIES WANTED OUR BUYING PRICES GIVEN CHEERFULLY You are cordially invited to visit our packing plant "Open House" Friday, August 17 at 8:00. CHRIS GAKLIS Nova Scotia Blueberry Exporters Parrsboro Nova Scotia Phone 260 Ring 2

CUDMORE'S WEEK-END SPECIALS Lyna Valley Peas 25c, Cashmere Bouquet Soap 29c, Cloverleaf Fancy Pink Salmon 29c, Fraser's Boneless Chicken 39c, Holly Hill Grapefruit Juice 29c, Peter Pan Peaches 35c, Bulk Dates 25c, Ajax Cleanser 29c

HEINZ SPECIALS Heinz Ketchup 25c bottle, Heinz Tomato or Vegetable Soup 2 Tins for 25c

New Potatoes 29c, New String Beans 39c, Blueberries 39c, Beets 29c, Aymer Pie Peaches 29c, Pie 20 oz. tin, Cherries 37c, Betty Crocker Pie Crust Mix 33c, Cucumbers 29c



In the Quebec wilderness, the RCAF has constructed a complete town to house the personnel who operate its radar station 24 hours every day. All modern facilities are provided, including comfortable homes for personnel who have children. The view above, taken from the radar building, shows the summer-resort appearance of this vital radar station.

RCAF Radar Station Keeps Endless Watch In North

BY RALPH MICKLIN THE THOMSON NEWSPAPERS SOMEWHERE IN QUEBEC—A complete RCAF station has been built here on the side of a lake in the Laurentian Mountains for one purpose — to watch bright yellow dots etched on the blackness of a radar screen.

Each yellow dot, or blip, represents an aircraft in the section of sky swept by a radar antenna, perched high on the mountain-top that dominates the station. So long as the radar controller can say of any blip, that is a friendly aircraft, headed for so-and-so, no problem exists.

When, however, the blip represents an airborne object that has to be labeled unknown, the entire complex system that is Air Defence Command, goes into action.

There is no true war, we are told. But Air Defence Command recognizes only the fact that unknown aircraft may be the beginning of an invasion. Therefore unknown airplanes must either be identified — or destroyed.

This RCAF radar station is a Ground Control Interceptor Centre, whose sole object is to survey the skies in its district, and report findings. Relevant information gathered by its radar controllers is then passed on to an Air Defence Control Centre, one of the main sectors in Canada's air defence mechanism.

So far, destruction has not been necessary. But no member of Air Defence Command doubts that the authority would be given to loose the CF-100's shattering rocket power against an aircraft known to be hostile.

Each CF-100, as it takes off, is placed under the orders of a controlling officer in the radar tower. The controller, peering at the blips on a radarscope, guides the fighter pilot by radio towards an assigned bomber target, so that they will meet with the CF-100's rocket barrage bearing full on the enemy.

mand knows better. The millions of dollars that are being poured into this and similar projects are not wasted. Without them, the chances are pretty good that there might be, in the foreseeable future, neither radarscopes nor dollars left in Canada.

China Opening Up Huge Territories In Northwest

By DAVID CHIPP LANCHEW, Northwest China (Reuters)—China is opening up her northwest territories with the speed and planning of a military operation and much of the fervor of a crusade.

After a two-week trip covering more than 3,000 miles in Kansu and Singkiang provinces the main impressions gained are of the importance being placed by the Chinese government in this area which is rich in minerals. Great advances already have been made.

Throughout the region, which stretches up to the Soviet border, the direct control of the central government on development plans and on political life is everywhere apparent. There are Russian advisers and experts and plenty of Russian machinery, but no more than in other parts of China.

It is rapidly becoming a land for young people and thousands are moving westward daily for construction work on oilfields, roads and railroads and for building new towns and factories.

Wages are much higher than in other parts of China, some workers getting almost double what they would get elsewhere.

In Lanchow, a railroad junction which serves as a base for the whole northwest, there are acres of construction materials ranging from wicker baskets and shovels for earth-moving gangs to all drilling machinery.

The roads from the present railhead at Yumen, some 500 miles to the northwest, to the new oilfields in the Isaidam basin in

Burke Electric Authorized Dealer Electrical Wiring Repairing and Supplies Oil Heating Household Appliances Television DIAL 4021 156 Great Geo. St.

M. V. FERGUS M. V. Fergus will load general cargo, at Summerside, on Friday, August 17th, and at Charlottetown on Saturday, August 18th.

BE SURE TO VISIT THE GROUND OBSERVER CORPS MOBILE DISPLAY AT THE CHARLOTTETOWN EXHIBITION OLD HOME WEEK See how civilians in your own Province are helping to protect Canada against air attack!

See it here THE BROWNIE HAWKEYE FLASH OUTFIT Featured in Kodak's BIG ad... perfect for birthdays, graduations, and other gift occasions REDDIN BROS. DIAL 4886

For FACIAL QUALITY SOFTNESS White Cross reach for the roll with the WHITE CROSS