

Widespread

Continued from page 1

The conversion of Stalin, who once was a student of the priesthood in the Russian Orthodox Church. The leaders of that church ordered prayers today for Stalin. Prime Minister Churchill sent his private secretary to the Soviet embassy to express his "regret" and to "offer his sympathy."

"relief and joy" when informed of Stalin's illness. There was cautious hope that Stalin's exit might ease the bitter feud which started five years ago when Yugoslavia was kicked out of the Communist family for refusal to follow Stalin's dictates blindly.

ment said pointedly: "The serious illness of Comrade Stalin will lead to his prolonged absence from government and party leadership." Who is the new boss? Maybe it is Georgi M. Malenkov, pudgy, scowling secretary of the Soviet Communist party, and a man who is reputed to harbor a deep hatred for the West.

DAILY CROSSWORD

- ACROSS 1. Stop 2. Shut 3. Beginning 4. Father-in-law of Jacob 13. Sacred picture (Gr. Ch.) 14. Manage 15. Nobleman 16. Remnant 17. Hawaiian Islands (abbr.) 18. Erbium (sym.) 19. A wit 20. Thrice (mus.) 21. Keep waiting 24. Vaulted roof 25. Equip 26. Black-tailed gazelle (Tibet) 27. Slender 29. Capital of Iraq 32. Fold over 33. Roman money 34. Norse god 35. Ahead 36. Polynesian drink 37. Ancient silver coin (Gr.) 39. Estimated 41. Voice (mus.) 42. Oil of rose petals 43. Gentlemen's servant 44. Approaches 45. Winged

Crossword grid with letters and numbers.

- DOWN 1. Wound spirally 2. Demand for repetition 3. Hebrew musical instrument 4. Dispatch 5. And (L.) 6. Stick to 7. Rendered 8. Fat of swine 9. West Indian sorcery (var.) 9. The chief (Amer. Indian tribes) 10. Complete 14. University officer 19. Covering of false hair 20. Garden amphibian 22. Journey 23. Point 24. Canine 26. Fuel 27. A catchword 28. Woolly 29. Small perforated ball 30. Long-legged shore bird 31. Remove (Print.) 33. Affirms 36. Culture medium 37. Egg-shaped 38. Missile weapon (So. Am.) 40. The eye: in symbolism 43. Virginia (abbr.)

Cryptogram puzzle grid with numbers 1-44.

DAILY CRYPTOQUOTE—Here's how to work it: AXYDLBAAXR LONGFELLOW One letter simply stands for another. In this example A is used for the three L's, X for the two O's, etc. Single letters, apostrophes, the length and formation of the words are all hints. Each day the code letters are different.

HEREFORD BREEDERS A special meeting of the Prince Edward Island Hereford Breeders Association will be held Friday, March 6, at 1:30 p.m. in the Provincial Department of Agriculture Building.

LENTEN FOODS for FAST DAY MEALS FISH 5c SALE ONE PACKAGE SHIRRIFF'S LEMON PIE FILLING ONLY 5c With Your First Trial Package SHIRRIFF'S PIE CRUST MIX AT REGULAR PRICE BOTH FOR 39c

GREENVALE W. I. The February meeting of the Greenvale W. I. was held at the home of Mrs Earle MacRae, with an attendance of seven members and one visitor.

Leadership Probably Decided These three or some other grouping in the Kremlin might form a triumvirate to govern Russia for a while to present a show of unity to the rest of the world.

Preparing For Death? "I have had the feeling for some time that they were preparing the way for Stalin's succession in Moscow. I believe the persecution of the Jews in Russia and the satellite countries, and particularly the Moscow doctors' case, is connected with these preparations."

as follows: sick Mrs. MacRae, Mrs. Sentner and Mrs. Honeywell Spence; School, Mrs. MacRae. Correspondence was read and discussed. It was moved and second that \$5.00 be pledged to the Women's Institute Branch for their extension programme.

Boost To China's Boss? In Paris, French experts said they thought Stalin's collapse tended to make China's boss, Mao Tse-tung, a much more imposing figure in the Communist world.

In Vienna, Western diplomats expressed belief there would be no immediate changes in the leadership of the satellites, but that purges undoubtedly would continue.

ATTENTION P. E. I. Regt. (17th Recce) MEMBERS THURSDAY NIGHT WIRELESS CLASS The class for THURSDAY NIGHT, MARCH 5th has been postponed Classes will resume on THURSDAY, MARCH 12th Sgd. D. B. MacBEATH, Lieut.

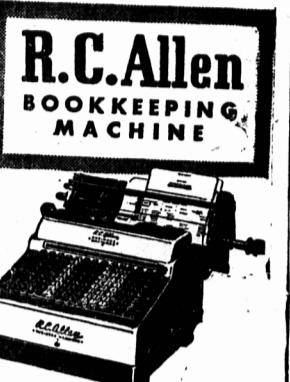
PULPWOOD Buying limited quantity rough spruce and fir, pulpwood at Georgetown, starting Friday, March 6. No wood accepted in half ton trucks. Wood must be sound, sawn square in lengths of four feet, and must be not less than four inches in diameter, inside the bark, at the small end.

Boates (P. E. I.) Limited Charlottetown

ed by "the subject I think most important and why?" The program consisted of each member naming "a country she would like to visit, and why." The meeting closed with "The Queen" after which lunch was served by the hostess.

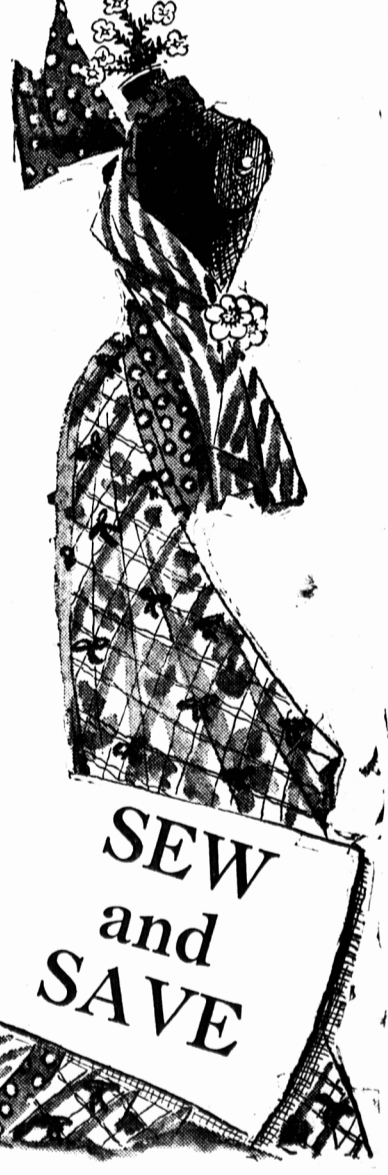
ARE YOUR MONTHLY STATEMENTS MAILED ON TIME? ARE YOUR POSTINGS UP TO DATE? DO YOU HAVE A PEAK PERIOD AT THE END OF THE MONTH DUE TO BOOK BALANCING? WELL THEN WHY NOT LET US SHOW YOU THE NEW

R.C. Allen BOOKKEEPING MACHINE BETTER EQUIPMENT MAKES A BETTER OFFICE And how you can have your books always balanced; Have your Statements always ready for mailing. Statement, Ledger and Proof Journal posted in one operation. And let us prove to you that an R. C. ALLEN Desk Model Bookkeeping Machine will definitely save you both time and money.



H. M. SIMPSON LTD. SALES SERVICE 160 Richmond St. — Charlottetown — Tel. 1277

SEW and SAVE Fun to make...fun to sew...do as smart women do...sew for yourself, your family, and your home. Never have fabrics been lovelier...and never have we been able to offer such a complete selection of distinctive patterns. Fabulous Fabrics Rayon Check Taffeta—crisp, rusty taffeta, makes up into very smart dresses—ideal for the tailored styles—color combinations are—pink and black, red and black, black and white, blue and black—full 45" width—priced at only, per yard 1.39



MOORE & McLEOD Limited Everything from patterns to fabrics to thread to complete that new spring outfit can be had in our Yard Goods and Notions Department. Lace trimmings from 1-2" to 3" in colors ecru, white and black. Buttons—seam binding—bias binding—rick rack braid—dress cord—belting—needles—thimbles—measuring tapes and shoulder pads for both dresses and blouses.