

CURCHES

Continued from page 9

11 a.m. Wheatley River 2 p.m. Hunter River 7:30 p.m. Hampshire Sunday School will reopen this Sunday at 10 a.m. Rev. Donald C. Powell, B.A., B.D., minister.

MT. STEWART — St. Peter's Bay Charge, the United Church. Mt. Stewart Worship 11:15 a.m. Senior Sunday School 10 a.m. Morell Worship 2 p.m. Senior and Junior Sunday Schools 10:30 a.m. St. Peter's Bay: Worship 9:30 a.m. Sunday School 10:30 a.m.

YORK PASTORAL Charge, the United Church. Rev. F.W. Lacey minister. Sunday, May 9, infant baptism. York 9:30 a.m. Central 11 a.m. Pleasant Grove 2:30 p.m. Brackley 7:30 p.m. Sunday School, Pleasant Grove 2:00 p.m.

NEW LONDON Pastoral Charge, the Presbyterian Church. Combined service for the entire pastorate in Long River 8 p.m. Rev. Leshe Files, preaching.

BRADALBANE PASTORAL Charge, the United Church. Worship: Rose Valley 11 a.m. Bradalbane 1:30 p.m. Pleasant Valley 5 p.m. Rev. Thomas Evans, minister.

LIGG CROSS Roads Pastorate Services Sunday, May 9. Ligg 11 a.m. Cross Roads 7:30 p.m. Special speaker, Owen MacRae. Hazelbrook: Sunday School 10 a.m. Alexandra: Sunday School 10:30 a.m. Lac Jerry: Catechism.

HAMPTON Pastoral Charge, the United Church. Hampton 9:45 a.m. Victoria, CGIT Graduation Service, Miss Patricia Gomez, Trinidad, guest speaker 11 a.m. Bonshaw 7:30 p.m. Rev. R. Jones, minister.

BUNBURY — Mt. Herbert United Churches. Bunbury 9:30 p.m. Mt. Herbert 7:30 p.m. Rev. Gerald G. Wywas, minister.

MILTON — RUSTICO Anglican Parish. Rev. A.E. Piercy, rector. St. Mark's, Rustico. Morning Prayer and Sermon 11:00 a.m. St. John, Milton. Evening Prayer and Sermon 2:30 p.m. Rev. Donald Quigg, B.A., P.E.I.-N.B. District Secretary of the Canadian Bible Society will be special preacher at both services. Special music.

CHRIST CHURCH, Cherry Valley. Evening Prayer and Sermon 7:30 p.m. Rev. A.E. Piercy, Priest-in-charge. Rev. Donald Quigg, B.A., P.E.I.-N.B. District Secretary of the Canadian Bible Society will be the special preacher. Special music.

VALLEYFIELD — ORWELL Head — Belle River, the United Church. Rev. Graeme M. Fraser, minister. Christian Family Sunday, May 9. Belle River 9:30 a.m. Valleyfield 11 a.m. Orwell Head 8 p.m.

FREE CHURCH of Scotland. Worship DeSable 11 a.m. Rev. E. MacDougall, interim-moderator.

FREE CHURCH of Scotland. Divine Worship Stanchel 2 p.m. Sabbath School 1 p.m. Rev. W. R. Underhay, minister.

COVEHEAD Pastoral Charge, the United Church. Services Sunday, May 9. West Covehead 11 a.m. Stanhope 2:30 p.m. Family Day Service conducted by the Sunday School Union Road 8 p.m. Rev. R.H. Baxter, minister.

CORNWALL United Church Pastoral Charge. New Dominion 9:45 a.m. Kingston 11:15 a.m. Cornwall 7:30 p.m. A special Christian Family Service will be held at all churches. Families are requested to worship as groups. Sunday Schools: Kings-ton 10 a.m. Cornwall 11 a.m. Hi-C Group Cornwall 8:30 p.m. Rev. L.L. Walls, minister.

BROOKFIELD PASTORAL Charge, the Presbyterian Church. Services Sunday, May 9. Glasgow Road, Church School 10 a.m. Worship 11 a.m. Hunter River: Church School 10:30 a.m. Worship 8 p.m. Lloyd Fournay, student minister. Rev. Basil Lowery, Montague, interim-moderator.

NEW GLASGOW Christian Church: Bible School 10 a.m. Service 11 a.m. Cavendish Baptist Church: Service 3 p.m. Fred. Erickson and Bradalbane Churches of Christ: Bible School 10:00 a.m. No Service of Worship. College graduation at Central Christian Church, Charlottetown. Rev. Merle Zimmerman, minister.

PRINCE

O'LEARY United Pastoral Charge. Rev. David H. Hamilton, B.A., B.D., minister. Christian Family Sunday and Sacrament of Baptism. Combined worship for Brae and West Devon at Brae 9:45 a.m. Combined worship for O'Leary and Bloomfield at O'Leary 11:15 a.m. Church Schools: O'Leary 10:00 a.m. Brae and West Devon 11 a.m. Sacrament of Adult Baptism 2:30 p.m. Teenagers membership class 3:30 p.m. Adult membership class 7:30 p.m.

THE ANGLICAN Church Cra-paud. Springfield, St. John's. Cra-paud. Evening Prayer 7:30 p.m. St. Elizabeth's, Springfield, Holy Communion 11 a.m. Rev. Michael R. Ness, rector.

BEDEQUE North Pastoral Charge, the United Church. Minister, Rev. R.M. Shaw. Travelers Rest: Worship 9:30 a.m.

(Continued on page 13)

OUR GIFT FOR MOM

LOW FOOD PRICES



CRISP FIRM SPY
APPLES

5 Lbs. **59^c**

SWEET JUICY MEXICAN
ORANGES

5 LBS. **69^c**

LONG GREEN
CUCUMBERS

19^c EA.



LEAN CHOICE CUT PORK

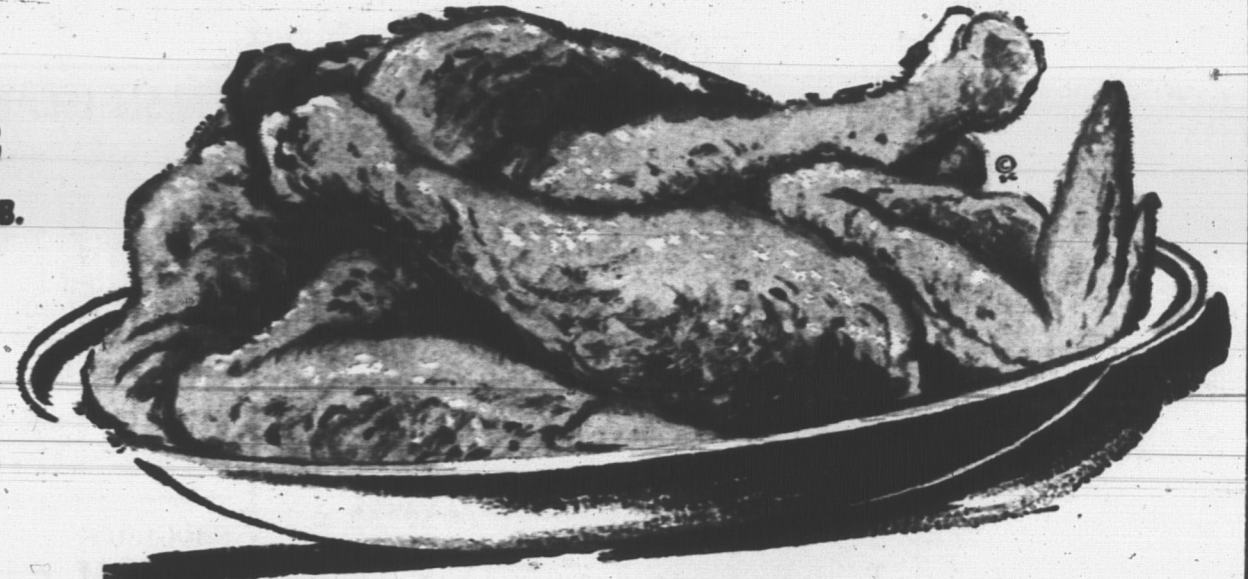
STEAK
53^c LB.

GRADE 'A' OVEN READY

FOWL
39^c 3 to 4 lbs.

P.E.I. SKINLESS SHOULDER

ROASTING PORK **43^c** LB.



FROZEN FOOD
MORTON'S MEAT PIES 4 FOR \$1
BIRD'S EYE ORANGE JUICE 6 OZ. TIN **29^c**

GRANULATED SUGAR
10 lbs. **89^c**

DUNCAN HINES CAKE MIXES
45^c DELUXE PKG.

SUNSHINE LIQUID JAVEX
25^c 32 OZ. BTL.

SWEET PICKLED HALF
COTTAGE ROLL LB. **59^c**

CANADA PACKERS
PEAMEAL BACON LB. **69^c**



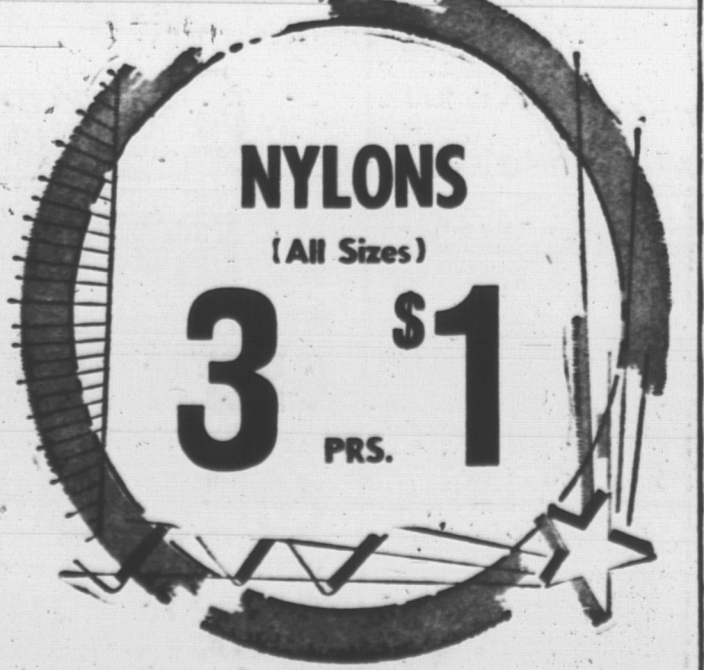
SCHNEIDERS READY TO EAT
PICNICS 1 1/2 LB. TIN **1.19**

CLOVER FARM CHOCOLATES
14 OZ. BOX **79^c**

NABISCO SHREDDED
WHEAT 18 OZ. PKG. **35^c**

HORSEY GRAPEFRUIT
JUICE 48 OZ. TIN **45^c**

SPECIAL PRICES EFFECTIVE 'TIL CLOSING TIME SAT., MAY 8th



CLOVER FARM MACARONI
Ready Cuts 2 LB. PKG. **39^c**

CLOVER FARM Spaghetti 2 LB. PKG. **39^c**

CLOVER FARM RED FITTED Cherries 2 15 OZ. TINS **43^c**

TERRACE PENS Ballpoint 6 FOR **49^c**

LOOK KIDS! GLASS Marbles 2 PKGS. **19^c**

HOLLAND ENGLISH TOFFEE 1 LB. PKG. **45^c**

SILVIKIRIN SHAMPOO REG. \$1.09 **85^c**