

STOCK QUOTATIONS

Morning Stock Letter

Received over Pittfield and Co's Private Wire... NEW YORK, July 27—Yesterday the Chamber of Commerce of the United States reported that for the first six months of this year construction manufacturing activity, transportation, foreign trade and employment have made wide gains...

previous weeks for 1935 period. Dividend meetings for today are Allegheny Steel, Cocoa Cola, Cons Edison and Sherwin Williams. Subject to minor reactions we again look for higher prices. Among the stocks we favor are U. S. Steel, Bethlehem Steel, New York Central, Southern Pacific, Northern Pacific, Illinois Central, General Electric, Allis Chalmers, Montgomery Ward, American Steel Foundries, North American, Columbia Gas and American Water Works. Consolidated Edison declared fifty cents this morning.

EXCHANGE GRAIN

Table with columns for various currencies and their exchange rates. Includes entries for Montreal, Australia, Belgium, China, Denmark, France, Germany, Great Britain, Holland, Japan, New Zealand, Norway, Poland, South Africa, Spain, Sweden, and Switzerland.

WINNIPEG, July 27—Wheat futures prices advanced under impetus of strong displays in outside markets on Winnipeg grain exchange today. Export demand estimated at 650,000 bushels and moderate buying for southern account were sufficient to absorb offerings in a session inclined to nervous and erratic trading. Values closed 1 to 1-8 cents higher, with July at 94 1-2, October at 94 and December 93 3-8 cents a bushel. Export business today included two cargoes for shipment out of Churchill. In cash wheat, Canadian mills were after nos. 1 and 2 northern and U. S. mills the durums, but offerings were light despite improved spreads of 1-2 cent. Pit trade in coarse grades found all futures prices moving to higher levels. Flax and rye were influenced mainly by the strength in wheat, while mill buying was uncoordinated in oats and export purchases in barley.

Currencies

NEW YORK, July 27—With reopening of official exchange markets in Paris after the usual Saturday closing, leading foreign exchanges, with the exception of the Canadian dollar, resumed their downward trend in terms of the United States dollar today. Canadian dollars remained at par. Virtually all of the improvement registered by most units on Saturday, when there was a temporary cessation of offerings from the continent, was wiped out today when increased selling from Paris and other centres found a scarcity of takers. The French franc closed 00 1-4 of a cent lower, Holland guilders lost .02 of a cent, Swiss francs were unchanged, and the British pound sterling yielded 7-16 of a cent.

PRODUCE

MONTEAL, July 27—Egg prices advanced to feature Montreal open produce markets today but butter, cheese and potatoes showed little change. Trade was light. Graded egg shipments in carlots or less were quoted at 27 cents a dozen for A large, 25 for A medium, 22-23 for B and 20 to 21 for C. Butter was quoted around 23 1-2 cents per pound for carlots or less of no. 1 white lots to retailers were 24 1-2 for solids and 25 for prints. Cheese was quoted at 13 1-4 to 1-2 cents per pound for Ontario and 13 to 13 3-8 for Quebecs. New Quebec potatoes were quoted at \$1.25 to \$1.35 per 80-pound bag.

LIVESTOCK

MONTEAL, July 27—Prices were not established on cattle in early dealings on Montreal livestock markets today while other sections held steady with calves a shade higher. Receipts: Cattle 1108; calves, 854; sheep and lambs, 1558; hogs, 1711. Top steers sold at \$6 with medium steers around \$5 and common steers at \$4 to \$4.50. Butcher cows were at \$2.75 to \$3.50 with the odd heifer up to \$4. Grass calves sold from \$3 to \$3.85 with heavy drinkers around \$4. Fair to medium vealers were \$5 to \$5.50 with medium kinds up to \$5.75 and top vealers up to \$6 and \$6.75. Lambs were \$8 to \$8.10 with culls out at \$6. Several loads were sold at \$7 to \$7.75. Sheep ranged from \$2 to \$3 with the odd good light sheep at \$4. Bacon hogs were 9.75 to \$9.85 fed and watered. Butchers, heavies and lights were cut 50 cents per hundredweight. Sows were \$6.50 to \$7. Toronto and Montreal—Industrial stocks steady. Toronto Mines—Golds higher; other groups lower. Winnipeg—Wheat 1 to 1-8 cents higher. New York—Cotton and sugar lower.

Advertising Rates—Payable in Advance

Central Guardian locals, 40 per word; Western and Eastern locals, 30 per word; Announcements and Coming Events 30 per word; Classified 20 per word; In Memoriam Notices, 700 per inch; Lists of Floral and Spiritual offerings, 40 per name; Letters of Condolence 700 per inch; Notices of Thanks and Appreciation, 700 per inch or 40 per word. Other rates on application. Minimum charge for any advertisement twenty-five cents.

Miscellaneous

- STUDENTS—CAN ACCOMMODATE two quiet refined students (girls) in good home. Moderate rates. A. J. Box 491. L-6350-7-25-31. THE SUN LIFE HAS A NEW LOW premium policy which guarantees even in the event of your death the completion of the things you had planned to do. Consult J. A. Moore, Currie Building, Charlottetown. Found FOUND—HUNTING DOG—Apply Guardian Office. L-5382. Wanted WANTED—BOTTLES, PINTS AND quarts. Phone 1107. L-5128-6-17-44. WANTED—SECOND HAND TRI-cycle, large size. Apply to Guardian office. L-5386-7-28-11. WANTED TO PURCHASE, HOUSE in Charlottetown or suburbs. Please write G. O. Guardian. L-5405-28-21.

For Sale

- FOR SALE—1930 DODGE SEDAN. Apply Guardian. L-5393-7-28-31. OFFICIAL BASEBALL SOXIE Pads ten cents. Postage extra. Apply Charlottetown Guardian. FOR SALE—BABY CARRIAGE. Apply W. B. Prowse & Sons, 122 Fitzroy St. L-5379. GOOD FARM HORSE FOR SALE cheap. D. Darrach, Bonshaw. L-6347-7-25-31. FOR SALE—2 MOWERS \$15.00 each, or exchange for cattle or pigs. L. Ryan, Lot 43. L-5401-7-28-11. FOR SALE—STORE AND DWELLING at Canoe Cove. Good business stand. Neil McConnell, Box 444, Ch'town. L-5376-7-27-31. FOR SALE AT BARGAIN, ONE Naedhemer Piano, excellent condition, one white enamel Kitchen Cabinet complete, 2 large Rugs and one small one. Also Refrigerator. Apply Mrs. L. B. Hunt, 24 Water Street. L-5389-7-28-31.

To Let

HOUSE TO LET—APPLY 202 EUSTON Street. L-5403-7-29-31.

Male Help Wanted

APPRENTICE WANTED TO learn Barber Trade. Short Course expert training. Mc'Ar Barber College, Halifax. 21-25A.

New York Curb

Table of New York Curb stock prices. Columns include Stock names and Close prices. Includes entries like Alum Co Amer, Am Cyan B, Am Gas Elec, etc.

Mt'l. Stock Exchange

Table of Montreal Stock Exchange prices. Columns include Stock names, Open, Last, and Close prices. Includes entries like Abitibi, Bathurst A, Beauharnois, etc.

MT'L. CURB

Table of Montreal Curb stock prices. Columns include Stock names and Close prices. Includes entries like B A Oil, Dom St, Ford A, etc.

MINING

TORONTO, July 27—Trading in the gold stocks again featured the Toronto mining market today and at noon prices registered a new peak for recent years at 150.46 in the exchange index. Profit-taking developed in the afternoon and recessions brought the standing back to 149.78 a gain of about half a point for the day. Base metals were also at a new high for the year at noon but they failed to hold, closing with a loss of more than half a point in the index. Several of the new golds continued their advance and some new highs for the year were posted. O'Brien closed at 4.75 for a net gain of 20. McLeod-Cockshutt did even better, among 60 to close at 4.50 while gains of 5 to 9 were registered for Premier, Buffalo-Anker-He, Kirkland-Hudson Bay, Little Long Lac, Omega, Reade-Aulier, Shawkey, Sullivan, Teck Hughes, and Greene Stabell. Pickle Crown advanced to a new high at 7.50, up 30 on the day, and Toburn firmed 20 to 1.83. Among the senior golds narrow losses predominated. Several penny issues traded in volume and at slightly higher prices. The strong spots included McVittie-Graham, Morris Kirkland, Omega, Roche Long Lac, Sladacoma and Ymir.

BANKS

Table of bank rates. Columns include Bank names and rates. Includes entries like Bk Can, Bk Mt, Bk N S, Royal Bk.

Table of various stock prices. Columns include Stock names and prices. Includes entries like Kerr Lake, Kirk Hud, Kirk Lake, L Shore, etc.

Produce Prices

MONTEAL, July 27—Wheat no 2 \$1.02 1-2. Barley C W no 3 63. Oats, C W no 3 50. Hay no 1 48. Flour spring wheat patents, firsts \$6.00. Flour second \$5.50. Flour bakers \$5.50. Flour winter wheat patents, choice \$3.70 to \$3.90. Flour white corn \$5.20 to \$5.50. Bran ton \$25.25. Shorts ton \$27.25. Middlings ton \$31.25. Rolled oats bag 90 lbs \$3.15. Hay no 2 per ton carlots \$8.00 to \$9.00. Cheese Ont white and col 13 1-4 to 1-2. Que white and col 13 to 13 3-8. Butter no 1 23 5-8. Eggs in cartons A large 30. Eggs A medium 28. Eggs B 25. Eggs C 24. Potatoes Que new 80's \$1.25 to \$1.35.

Miscellaneous

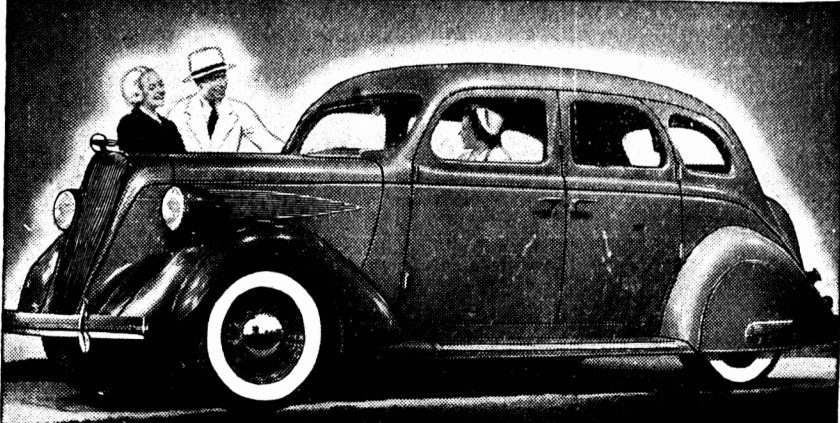
MONTEAL, July 27—Butter prices advanced slightly in light trading today on Canadian commodity exchange produce section. Butter spot: Sales: 700 boxes Que, 23 5-8. Cheese Spot—Unquoted. Eggs Spot—Ont A large 27B; A medium 25B; B large 22B; C 21B. MONTEAL, July 27—Pound sterling declined 5-16 cent to \$5.01 27-32 on Montreal foreign exchange today while the French franc eased 01 cent to 6.61 cents. The United States dollar was unchanged at par.

Prices Rise On N.Y. Exchange

ALDENRAC, Brett Tr 25 8 1/2. CHUM MAN, Chum Man 45 5. HOME OIL, Home Oil 104 10 1/2. HUB BAY, Hub Bay 22 22. KIRK TOWN, Kirk Town 153 1/2. LAKE MAR, Lake Mar 54 5 1/2. MALBROK, Malbrok 39 39. MANDY, Mandy 13 13. NORDON, Nordon 13 13. OULSKO, Oulsko 14 1/2. PARK HILL, Park Hill 23 23. PAWNEE K, Pawnee K 8 1/2. DUND ORR, Dund Orr 50 50.

NASH INVITES YOU TO SHARE IN ITS 20TH ANNIVERSARY CELEBRATION!

TO WIN NEW CUSTOMERS DURING OUR 20TH ANNIVERSARY CELEBRATION, NASH OFFERS THE GREATEST CAR-BUYING OPPORTUNITY IN YEARS!



NO MATTER WHAT CAR you may have in mind, don't fail to come in and see the beautiful Nash and LaFayette models. Take one out and drive it. Then, after you've seen for yourself how much more it offers you than any other car in its price class... compare our allowance on your present car with any other you can get!

In 1936, our anniversary year, Nash-LaFayette sales increases are almost twice as large as those of the industry as a whole! We want you to share our success. During our anniversary celebration this applies to all Nash and LaFayette cars including the Nash Ambassador.

CONVENIENT LOW PAYMENTS THROUGH 7% C. A. C. TIME PAYMENT PLAN

NASH and LAFAYETTE

JAMES A. CURRIE McINTYRE & SULLIVAN NASH MOTOR SALES Charlottetown, P. E. I. Montserrat, P. E. I. Summerside, P. E. I.

IN ALL NASH-BUILT CARS YOU GET BETTER ENGINEERING FOR YOUR MONEY!

to new high levels for the past several years. Renewed demand for leading equities apparently found inspiration in the continuance of favorable economic news including earnings and dividends. Profit-taking cut into some of the advances in the final hour. The Associated Press average of 60 stocks moved up 7 of a point to 168.6, another peak since early July, 1931. The net gain for the day was the best in about 2 weeks. Volume also increased on the upturn, transfers totalling 1,826,283 shares against 1,320,880 last Friday. It was the largest day's turnover since July 14. Canadian stocks shared mildly in the general optimism, most of them rising fractionally. Canadian Pacific, Dome Mines, International Nickel and Walkers Gooderham and Worts gained between 1-8 to 7-8ths of a point. McIntyre was up 1-8. Bullish proponder appeared early through the action of Consolidated Edison directors in declaring a 50-cent dividend compared with 25 in previous quarters. The utilities quickly took the lead to be followed by motors, aircrafts, farm implements, steels and, later, the rails. Strength of motors continued. General Motors, after the close, published its best June statement since 1929. The company revealed profits of \$2 a share in comparison with \$1.17 in the 1935 period. Outstanding share gainers included Allied Chemical, up 5 1-2 at 217 1-4; J. I. Case, up 3 at 163; Westinghouse, up 3 1-2 at 141 3-4; Chrysler, up 2 at 123 5-8; General Motors, up 7-8 at 72 1-4; Sears Roebuck, up 2 1-4 at 84; Montgomery Ward, up 1 3-8 at 46 7-8; Consolidated Edison, up 1 1-2 at 43 1-4; Santa Fe, up 1 1-2 at 85 1-4; Minnesota-Hoeywell, up 4 1-2 at 87; Erie, up 1 1-2 at 77 1-4; Douglas Aircraft, up 1 1-2 at 73 7-8; and U. S. Steel, up 1 3-4 at 67 1-2. Philip Morris fell back 1-4. Other losers included Schenley at 39, U. S. Industrial Alcohol at 33 1-5, and Scott at 43 3-4 and Radio at 12. What stocks did? Advances: Mon Sal 439 3/16. Declines: 261 1/4. Unchanged: 190 1/9. Total issues: 800 6/7.

OUR BOARDING HOUSE with Major Hoople



OUT OUR WAY By WILLIAM

