

Contract Bridge

By Josephine Culbertson
NEAR-MISS

South had roughly the right idea about how to play the following hand, but he made one fatal move.

East dealer.
Both sides vulnerable.

♠ A Q 9 4
♥ A 6 3
♦ A J 7 2
♣ Q 3

8 6 5 2
10 8 4
10 5 3
A 7 4

N
W
E
S

♠ K J
♥ K 9 8
♦ K J 10
♣ 6 5 5

The bidding:
East South West North
Pass Pass Pass 1♦
2♣ Pass Pass Dble.
3♥ Pass Pass 4♥
Pass Pass Pass

West laid down the ace of clubs, and South could take it for granted, then and there, that East held all the other missing high cards for his vulnerable two-level club bid.

Defensively speaking, it would have been a very good idea for West to shift to diamonds, but when East played the five and South false-carded the nine (to conceal the deuce), West elected to lead a spade. Now South had a real chance. He put up the spade ace, cashed the ace and king of trumps, and then leaving the trump ten at large, threw East in with a club.

Beyond doubt, South's plan would have succeeded if East had been an average player, but East was an expert; he countered by returning another high club. South could discard a diamond while he ruffed in dummy, but when he then led a spade to knock out the king, East returned still another club—and now South could not protect himself against West's blank ten of trumps. So South had to go down one.

South could have won out by maneuvering a little differently at the crucial point. After putting up the spade ace and drawing exactly two rounds of trumps, he should have led his spade seven, instead of the club, to throw East on lead. Now East couldn't escape. A diamond return would suit South perfectly; and if East (as he actually did) returned a club after cashing his club king, South would discard a diamond while he ruffed in dummy, and then could enter his own hand via the spade ten to draw West's last trump. South's other diamond loser would go on dummy's fourth spade.

GET YOUR FREE DIGEST of the Culbertson Point-Count Method.



By Thornton W. Burgess

PADDY TAKES A CHANCE

Foolish chances seldom pay. More is lost than gained that way. —Old Mother Nature.

Paddy the Beaver was anxious, and Mrs. Paddy felt much as he did. Jack Frost had come earlier than usual. He had covered their pond with a sheet of ice. It was thin ice, but it was a little too early for even thin ice. And the beaver folk feared that winter might come before they were ready for it.

"I don't like it," said Paddy. "No more do I, but there is nothing we can do about it," replied Mrs. Paddy. "We can't do anything about the weather," agreed Paddy. "But we can do something about our food pile."

"I don't see what we can do more than we have done," retorted Mrs. Paddy. "We can work a little harder, and a little longer," said Paddy. "Perhaps you can, but I can't," declared Mrs. Paddy. She spoke rather crossly. This was because she was really worried. Worry often makes makes folk cross. Or perhaps it is just an excuse for being cross.

"If we can cut and harvest these young aspen trees to which we have dug the canal, we ought to have enough sticks in our food pile to last as long as we may need them. I don't think this ice will last long. We'll get busy as soon as the water is open. And we'll get all the sticks into the pond before Jack Frost comes again," said Paddy.

He was right about the ice. Together gentle Sister Southwind and jolly, round Mr. Sun soon melted that thin ice. Paddy and Mrs. Paddy didn't wait for the last of it to disappear. They swam under it over to their canal, and swam up the canal breaking it as they swam. Then they climbed out and went to work on the young aspen.

Simply send a stamped, self-addressed envelope to the J. C. Winston Co., 1010 Arch St., Philadelphia, Pa.

trees to reach which by water they had dug their canal. Each selected a tree and began cutting. They were small trees, and it didn't take long to cut down one of them. Paddy's was the first to fall, but Mrs. Paddy's tree was cut almost as quickly. It fell across the one that Paddy had cut. She thumped a warning with her tail as it started to fall, and Paddy leaped out of the way just in time. Then they went to work trimming those two trees as fast as they could. To save time they cut the trunks into longer lengths than they otherwise would have. They floated them out into the pond, but didn't take time to tow them over to the food pile. Then they were back among the young aspens. They didn't even take time to eat.

Jack Frost had not returned the next night, nor the next. Of course those busy workers had to rest, but they did this no longer than they had to. The trees nearest the water were harvested first. As they kept on cutting they had to go farther and farther from the water. There was one tree bigger than the others that was quite a little distance back. Paddy kept looking over at it. If they could cut that tree and add it to their food pile it would make enough. But to go that far from the

water would be taking a chance. There had been no sign of enemies around for some time, still it would be taking a chance. Paddy decided to take it, and did.

SOLID FOUNDATION

TOTTENHOE, England (CP)—New roads in this Bedfordshire district may be laid on old Roman foundations.

CITY TAX APPEALS

Notice is hereby given that the Board of Appeals from Supplementary Assessments and Valuations has set Tuesday, December 14, 1954, at 10.00 a.m. in the Court Room in the City Building, as the time and place for hearing such supplementary tax appeals.

J. A. FULLERTON, City Clerk.



DAILY CROSSWORD

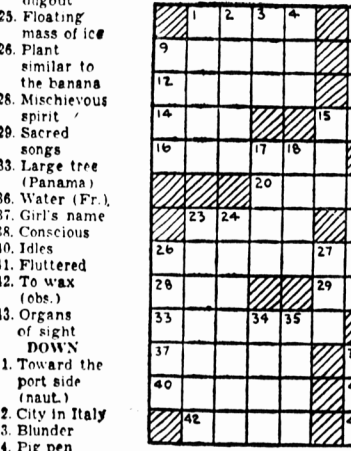
- ACROSS**
1. Monkeys
 2. Nuclei of starch grain
 3. Separated
 4. Island off Venezuela
 5. Large, low truck
 6. Wide-spread
 7. Fortify
 8. Mackerel-like fish
 9. Piece of sculpture
 10. Exclamation
 11. Invigorates
 12. Hillside dugout
 13. Floating mass of ice
 14. Plant similar to the banana
 15. Mischievous spirit
 16. Sacred songs
 17. Large tree (Panama)
 18. Water (Fr.)
 19. Girl's name
 20. Conscious
 21. Idles
 22. Fluttered
 23. To wax (obs.)
 24. Organs of sight
 25. DOWN
 1. Toward the port side (naut.)
 2. Blunder
 3. Pig pen



- ACROSS**
3. Circle of light
 6. Metal
 7. Rebellious archangel
 8. Subsidizing
 9. Exclamation
 11. Sorrow
 12. Fragrant wood (Fl.)
 13. Chief deity (Baby)
 14. Gull-like bird
 15. Single thing
 16. Wading bird
 22. A vein (anat.)
- DOWN**
23. A king of book or table
 24. To christen
 26. Vile-ated
 27. Highest peak (P. I.)
 30. Depart
 31. Female horses
 32. Prosecuted judicially
 34. A Roman road
 35. Receptacle for flowers
 38. Solemn wonder
 39. Method

Yesterday's Answer

34. A Roman road
35. Receptacle for flowers
38. Solemn wonder
39. Method



12-9

DAILY CRYPTOQUOTE—Here's how to work it:

AXYDLBAAXR
is LONG FELLOW

One letter simply stands for another. In this example, A is used for the three L's, X for the two O's, etc. Single letters, apostrophes, the length and formation of the words are all hints. Each day the code letters are different.

A Cryptogram Quotation
KRH KUU JIB CBUH YC KHHPH
VBOCIYRS RPJ, KRH KUU JIB
IPKZH YC OKHP PRUKZSPOPRCV
CBB-TBTP.

Yesterday's Cryptogram: WORSE THAN A BLOODY HAND IS A HARD HEART—SHELLEY.

NOTICE

Dances in Parkdale Hall to be discontinued until further notice.

CARD PARTY

SPRING PARK HALL

Thursday, Dec. 9

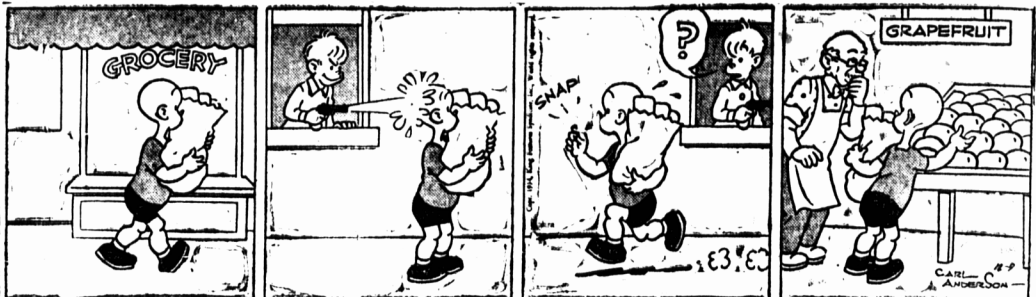
8:00 P.M.



Rudolph the Red Nosed Reindeer



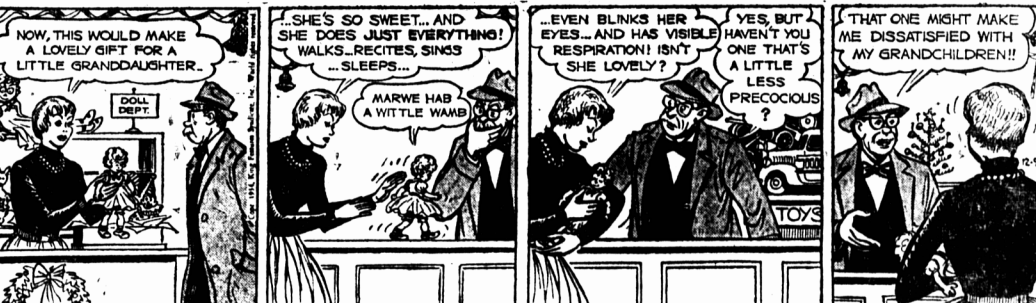
Henry



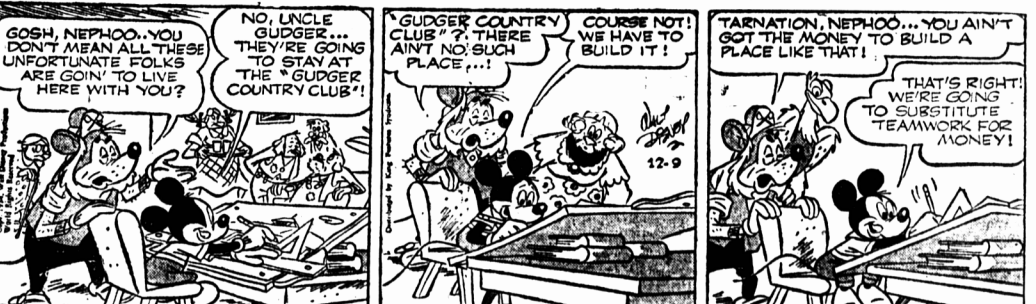
Grandma



Muggs and Steeter



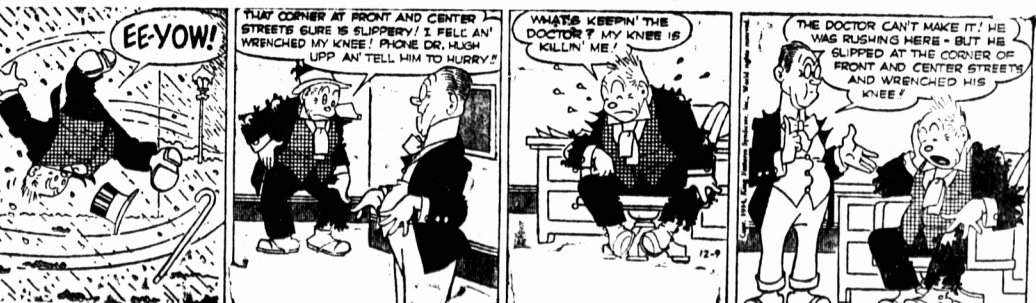
Mickey Mouse



Tilly the Toiler



Bringing Up Father



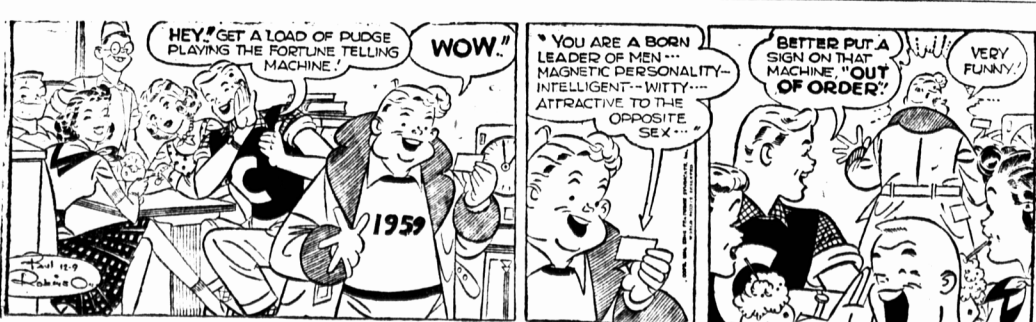
By Ham Fisher



By Mel Graff



Etta Kett



Joe Palooka



Secret Agent X9



By Robert L. May

By Carl Anderson

By Charles Kuhn

By Wally Bishop

By Walt Disney

By Rob Gustafson

By George McManus

By Al Capp

By Fran Striker